



***Bryn Mawr  
Presbyterian Church***

---

August 23, 2015  
8:00 a.m., Sanctuary  
Thirteenth Sunday after Pentecost

# Welcome to BMPC

*Lord, Your word is a lamp to my feet and a light to my path.*

**NEW HERE?** Stop by the information alcove near the main entrance to learn more about us. Although many of our activities are on summer hiatus, we'd be glad to acquaint you with our upcoming programs and ministries. We hope you will return often!

## **TODAY'S SCHEDULE FOR CHILDREN AND YOUTH:**

**Childcare:** 7:45 - 11:15 a.m., Ed. Bldg., Rm. 102

**Nursery Care with special activities for age 2 - 3:**

10:00 a.m., Ed. Bldg., Rm. 102

**"Summer Chapel" for age 4 - grade 3:** 10:15 a.m., Ed. Bldg., Rm. 202

(10:00-10:15 a.m. families worship together in the Sanctuary)

*If this is your first Sunday, please accompany your child.*

**Grades 4-12:** in worship, Sanctuary.

**GETTING CONNECTED.** Please fill out the fellowship register as indicated during worship to let us know that you were here, to provide or update your contact information, and to identify yourself to others in your row so that you may greet each other after worship.

**JOIN US FOR FELLOWSHIP.** Visit the Ministries Center Court for coffee between 8:00 - 10:00 a.m. and join us for refreshments on the front lawn (weather permitting) at 11:00 a.m.

*As we gather for worship, please silence your cell phone and prepare your heart and mind for the worship of God.*

## **Worship Staff:**

Agnes W. Norfleet, Pastor

Rebecca Kirkpatrick, Associate Pastor for Adult Education & Mission

Rachel Pedersen, Associate Pastor for Children and Family Ministry

Kellen A. Smith, Associate Pastor for Youth, Their Families and College Ministries

Richard Wohlschlaeger, Interim Associate Pastor for Senior Adults & Pastoral Care

Jeffrey Brillhart, Director of Music and Fine Arts

Edward L. Landin, Assistant Director of Music



# GATHERING AROUND THE WORD

## PRELUDE

## WELCOME

Rebecca Kirkpatrick

*Please fill in the Fellowship Register at the end of your pew.*

## † CALL TO WORSHIP

One: The eyes of the Lord are on the righteous, and his ears are open to their cry.

**All: The Lord is near to the brokenhearted, and saves the crushed in spirit.**

One: God redeems the life of God's servants; no one who takes refuge in God will be condemned.

**All: Let us rejoice in the God of our salvation, and let us worship God in truth and joy.**

## † HYMN 260

A Mighty Fortress Is Our God

EIN' FESTE BURG

## CALL TO CONFESSION

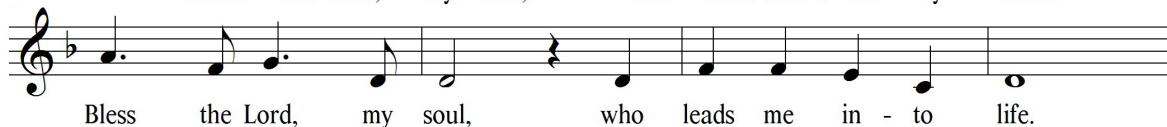
### AND PRAYER OF CONFESSION *(in unison)*

Holy God, we live in a fearsome and broken world. Threats of terrorism fill the air. Hunger and homelessness haunt the globe. Our hearts ache for the world you created in goodness and promise, with full and abundant life for all. As Christ had compassion on the suffering and broken, in body and in spirit, so raise us up to stand for truth and justice and love. Where we have participated knowingly and unknowingly in the powers of evil, forgive us. Restore us to be your covenant people, steadfast in faith, upheld by truth, equipped for love. In Jesus' name, we pray.

*A moment of silence for personal reflection and confession.*

## ASSURANCE OF PARDON

### CONGREGATIONAL RESPONSE *(sung twice)*



*All rights reserved. Reprinted under OneLicense.net #A-716211*

† *Please stand, if able.*

# HEARING THE WORD

PRAYER FOR ILLUMINATION

Nancy Taylor

FIRST LESSON Ephesians 6:10-20 (*p. 195 in pew Bible*)

Nancy Taylor

SECOND LESSON Joshua 24:1-2a, 14-18  
(*p. 215 in pew Bible*)

Richard Wohlschlaeger

One: The Word of the Lord.

All: **Thanks be to God.**

SERMON

*A Strong Follow-Through*

Richard Wohlschlaeger

## RESPONDING TO THE WORD

† HYMN 388

O Jesus, I Have Promised

ANGEL'S STORY

SACRAMENT OF THE LORD'S SUPPER

Rebecca Kirkpatrick

*You are invited to come forward, using the center aisle, to partake of the Lord's Supper by intinction (dipping a piece of bread in the cup); return to your seat using the side aisle.*

*Gluten- and casein-free elements are on the center table.*

*You are invited to bring your morning offering to the baskets when you come forward.*

THE INVITATION TO COMMUNION AND THE GREAT THANKSGIVING

One: The Lord be with you.

All: **And also with you.**

One: Lift up your hearts.

All: **We lift them to the Lord.**

One: Let us give thanks to the Lord our God.

All: **It is right to give our thanks and praise.**

THE LORD'S PRAYER (*in unison*)

Our Father who art in heaven, hallowed be thy name, thy kingdom come, thy will be done, on earth as it is in heaven. Give us this day our daily bread. And forgive us our trespasses, as we forgive those who trespass against us. And lead us not into temptation, but deliver us from evil. For thine is the kingdom, and the power, and the glory, forever. Amen.

THE COMMUNION OF THE PEOPLE

PRAYER OF DEDICATION

Richard Wohlschlaeger

† HYMN 293

This Is My Father's World

TERRA BEATA

† *Please stand, if able.*

† **SENDING AND PASSING OF THE PEACE**

One: The peace of Christ be with you.

All: **And also with you.**

**POSTLUDE**

**Worship Notes**

**SANCTUARY FLOWERS**

Given to the glory of God and in loving memory of  
Charles L. Andes

**ASSISTING WITH COMMUNION**

Deacon Nancy Taylor

**GUEST ORGANIST**

Andrew Senn

**PLAYING THE CARILLON**

Rob Mygatt

**GREETING AND HOSTING TODAY**

Representatives of Membership Council and new members

## Announcements

**CHAPEL CLOSING.** The Chapel is closed until after Thanksgiving for stained glass window restoration. Until the work is completed and scaffolding removed, the 8:00 a.m. worship service will be held in the front of the Sanctuary.

**DINE OUT TO BENEFIT MAIN LINE ADULT DAY CENTER.** Enjoy a meal at *Not Your Average Joe's* restaurant in Suburban Square any Tuesday in September and 15% of the proceeds will benefit the Main Line Adult Day Center on our campus. Vouchers required; download the flyer on our website's homepage or pick one up at our reception desk.

**FALL CHOIR REGISTRATION.** Opportunities for all ages from kindergarten through adults! NEW: "Wednesdays Together" program for grades K-5 from 4:30-6:00 p.m., led by Edward Landin and the Rev. Rachel Pedersen, followed by Youth Chorale (now for grades 6-12) from 6:00-7:00 p.m. Intergenerational handbell choir: Sundays, 11:15 a.m.-12:15 p.m. (ability to read music required). Sanctuary Choir: Thursdays, 7:00-9:00 p.m. Singing for Life: Thursdays, 9:30-10:45 a.m. StephanieSpeakman@bmpe.org, ext. 8836.

## Today

**SUNDAY MORNING DISCUSSION GROUP.** Sundays, 8:45 a.m., Conference Room. Discussion of *Falling Upward – A Spirituality for the Two Halves of Life* by Richard Rohr. CarolSchmidt@bmpe.org, ext. 8819.

## Upcoming

**MEN'S STUDY GROUP.** Begins Wed., Sept. 9, 10:00 a.m., Converse House. Led by Paul MacMurray, the group will read and discuss Huston Smith's *The World Religions*. Book (\$10) available for purchase. AmyBauer@bmpe.org, ext. 8821.

**SEARCHING FOR STILL WATERS: AN EXPLORATION OF LOSS AND GRIEF.** Sat., Sept. 12, 10:00-11:30 a.m., Converse House Parlor. On-going support group for those coping with the loss of a loved one, whether recent or many years ago. All welcome. Info@middletoncenter.org, 610-525-0766.

**SUNDAY SCHOOL KICK-OFF.** Sun., Sept. 13. Classes for ages 2-4 at 10:00 a.m. and for K-Grade 5 after the Childrens' Moment in worship, Ed. Bldg. Opening Gathering in the Gym for grades 6-12 at 10:00 a.m. followed by grade level classes, Ministries Center. MaryRichards@bmpe.org, ext. 8811.

**RALLY DAY.** Sun., Sept. 13, 11:00 a.m., front lawn. Don't miss our festive celebration for all ages as we begin a new program year. Bring a friend!

**URBAN SUBURBAN BOOK GROUP.** Tues., Sept. 15, 12:00 p.m., Converse House Parlor. Bring a bag lunch and discuss *Boys in the Boat* by Daniel James. sherry.archer19@yahoo.com.

**WEDNESDAY NIGHT DINNERS.** Beginning Wed., Sept. 16, 5:30-7:00 p.m., Congregational Hall. Fresh, healthy meals catered by Chef Ruth; no reservations necessary. Adults \$8, children/students \$5. DonnaBarrickman@bmpc.org, ext. 8809.

**PRESBYTERIAN HISTORICAL SOCIETY TOUR.** Thurs., Sept. 17. Learn about Presbyterian history and tour the Old Pine Street Church's colonial churchyard. No charge; lunch included. Bus departs from our back parking lot at 9:00 a.m.; space is limited. Register: AmyBauer@bmpc.org, ext. 8821.

## ***Caring & Sharing***

**CONGREGATION-WIDE DAY OF SERVICE.** Sat., Sept. 19, 8:30 a.m. – no later than noon. Projects include a casserole blitz in our kitchen to feed the hungry, hands-on help in our community, and a collection for Habitat for Humanity's Re-Store. Set aside household items to donate to Re-Store now; acceptable items are listed at [www.habitatphiladelphia.org/items-accepted](http://www.habitatphiladelphia.org/items-accepted). CarolSchmidt@bmpc.org, ext. 8819.

**PARTICIPATE IN OUR FINE ARTS OUTREACH PROGRAM.** If you enjoy playing the piano or another instrument, singing, sharing travel slides, or reading aloud from your favorite poetry or prose, consider presenting a 30-minute program at a retirement community or nursing home. Sign up by Tues., Sept. 8: DeAnn Clancy, [deannclancy@hotmail.com](mailto:deannclancy@hotmail.com) or 610-525-8347.

# ***This Week's Calendar***

***For more information visit our website at [www.bmpc.org](http://www.bmpc.org), call the church office (610-525-2821), or contact [communications@bmpc.org](mailto:communications@bmpc.org).***

## **Today, August 23, 2015**

The Rev. Richard Wohlschlaeger is preaching.

- 8:00 a.m. Worship with Communion, Sanctuary
- 10:00 a.m. Worship with Summer Choir, Sanctuary
- 7:45 a.m. Childcare for infants - age 3, Ed. Bldg. Rm. 102 (through 11:00 a.m.)
- 8:45 a.m. Sunday Morning Discussion Group, Conference Room
- 10:00 a.m. Grades 4 - 12 in worship, Sanctuary
- 10:15 a.m. Sunday School: "Summer Chapel" age 4 - grade 3, Ed. Bldg.
- 11:00 a.m. Lemonade on the Lawn
- 11:30 a.m. Child and Youth Protection Training, Gloucester Room
- 12:45 p.m. Sunday School Teacher Training, Gloucester Room

## **Monday, August 24**

- 9:30 a.m. DanceFit, Gymnasium

## **Tuesday, August 25**

- 10:00 a.m. Child and Youth Protection Training, Gloucester Room
- 10:30 a.m. Tai Chi, Gymnasium

## **Wednesday, August 26**

- 9:00 a.m. Walk for Life!; meet in Main Parking Lot
- 9:30 a.m. DanceFit, Gymnasium

## **Thursday, August 27**

- 10:00 a.m. Artists' Gathering, Gloucester Room

## **Friday, August 28**

*No events scheduled*

## **Saturday, August 29**

*No events scheduled*

## **Sunday, August 30**

The Rev. Rachel Pedersen will preach.

# ***Contact Information***

## **Bryn Mawr Presbyterian Church**

625 Montgomery Avenue, Bryn Mawr, PA 19010

(P) 610-525-2821 • (F) 610-525-9476

[www.bmpc.org](http://www.bmpc.org) (for program information, calendar, and staff directory)

[Facebook.com/BrynMawrPC](https://www.facebook.com/BrynMawrPC) • [Twitter.com/BrynMawrPres](https://twitter.com/BrynMawrPres)

24/7 Answering Service for Pastoral Emergencies: 610-525-2821

Main Line Adult Day Center: 610-527-4220

The Middleton (Counseling) Center: 610-525-0766 • [JoyceKrajian@bmpc.org](mailto:JoyceKrajian@bmpc.org)

The Weekday School (Preschool): 610-525-2821, ext. 8840