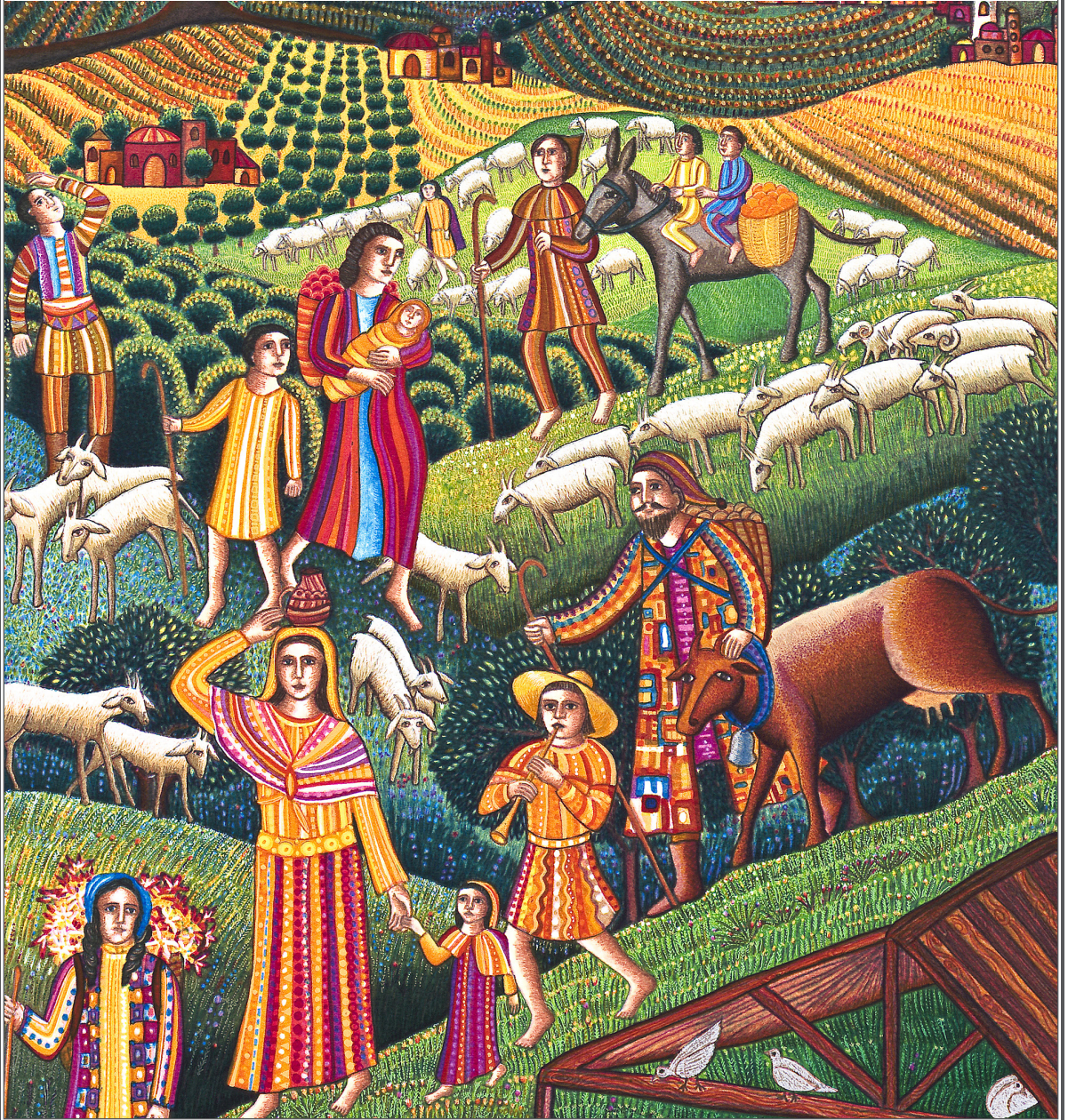


# *Bryn Mawr Presbyterian Church*

Sunday, December 17, 2023 | 8:00 a.m., Chapel

Third Sunday of Advent





# WELCOME

## NEW HERE?

We are pleased that you are joining us as we worship God this morning. We invite you to introduce yourself to one of our pastors following the Worship Service. All of our programs, ministries, and opportunities for mission are open to everyone. Come join us!

## LIVESTREAMED CHURCH SERVICES

In addition to in-person worship, the 10:00 a.m. Sunday Worship Service is available to watch on our livestreaming page:

[www.bmpc.org/livestream](http://www.bmpc.org/livestream) For your convenience, the service also will be posted on our Worship Services page on Monday.

## CHILDCARE AND SUNDAY SCHOOL

Childcare is available on Sundays from 7:45 a.m. to 12:30 p.m. for children ages six months and older. See Sunday School class information on this page. Please contact Pastor Rachel, [RachelPedersen@bmpc.org](mailto:RachelPedersen@bmpc.org) or Childcare Coordinator Erika Henry at [childcare@bmpc.org](mailto:childcare@bmpc.org) with any questions.

## WEEKLY E-NEWSLETTER

Subscribe to our BMPC eNews by visiting our website: [www.bmpc.org](http://www.bmpc.org)

## Today's Schedule

### Childcare (infant - age 5)

7:45 a.m. – 12:30 p.m.

Ed. Bldg., Rm. 101

---

### Worship with Baptism & Sanctuary Choir

10:00 a.m., Sanctuary

---

### Sunday School Classes

#### Age 2 - PreK

10:00 a.m., Ed. Bldg.

#### Grades K - 5

10:00 a.m., Worship in Sanctuary

10:15 a.m., Ed. Bldg.

---

### Youth Gathering

10:00 a.m., Sanctuary

---

### Atrium Café

11:00 a.m., Atrium

---

### BMPC Members Art Exhibit

9:00 a.m. to 12:00 p.m.,  
Art Gallery, Ministries Center

---

### Rainbow Reindeer Games

11:00 a.m., Gymnasium

# GATHERING AROUND THE WORD

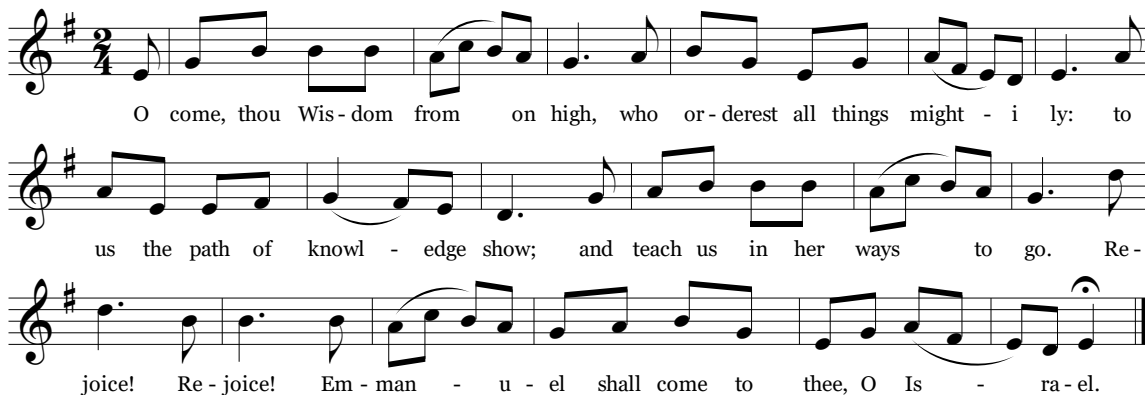
## PRELUDE

## WELCOME

Rachel Pedersen

## ADVENT INTROIT

VENI EMMANUEL



O come, thou Wis-dom from on high, who or-derest all things might - i ly: to  
us the path of knowl - edge show; and teach us in her ways to go. Re -  
joice! Re - joice! Em - man - u - el shall come to thee, O Is - ra - el.

## CALL TO WORSHIP & LIGHTING OF THE ADVENT WREATH

Elisha Gilette

Leader: The Prophet Isaiah says: "The spirit of the Lord is upon me,

People: **To bring good news to the oppressed, to bind up  
the brokenhearted."**

Leader: The angel Gabriel appeared to Mary who had found favor with God,

People: **And said her child would be called the Son of the Most High.**

Leader: He would fulfill the promises of Isaiah to comfort all who mourn,

People: **To love justice and cause righteousness to spring up in the earth.**

Leader: May this small but abiding flame of joy

People: **Give light to the world.**

Leader: Help us, O God, to follow joy down your path of knowledge,

People: **And teach us in her ways to go.**

† HYMN 104

O Lord, How Shall I Meet You

VALET WILL ICH DIR GEBEN

## CALL TO CONFESSION AND PRAYER OF CONFESSION *(in unison)*

God, you are both mighty and tender;  
you approach from on high and dwell in our midst.  
You gather us in, feed us and bid us rest in your care.  
Still we fear the world around us  
and fail to relish in your help when we yearn for a Savior.  
Yet you continue to call us to bear the light of Christ  
in everything we do for family, friend, neighbor and stranger.  
Forgive us and restore us, show us the light of your face  
that we may be saved for the good work of the gospel.

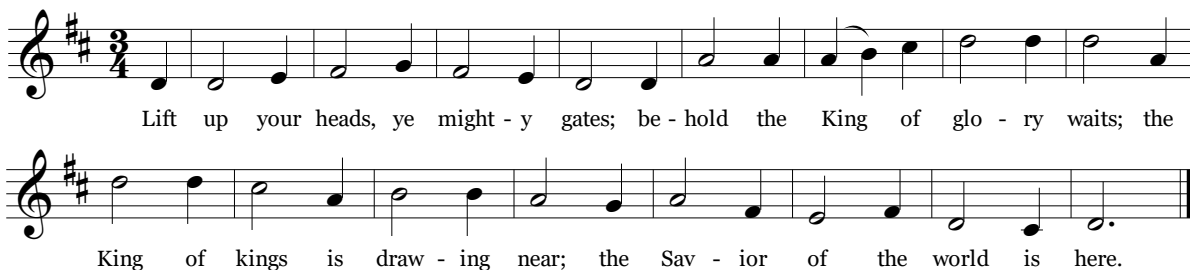
*A moment of silence for personal reflection and confession.*

## ASSURANCE OF PARDON

### SUNG RESPONSE

### Lift Up Your Heads

PUER NOBIS



Lift up your heads, ye might - y gates; be - hold the King of glo - ry waits; the  
King of kings is draw - ing near; the Sav - ior of the world is here.

## HEARING THE WORD

### PRAYER FOR ILLUMINATION

Elisha Gilette

### FIRST LESSON

Isaiah 61:1-4, 8-11 *(pg. 691 in pew Bible)*

### SECOND LESSON

Luke 1:26-38 *(pg. 56 in pew Bible)*

Agnes W. Norfleet

One: The Word of the Lord.

All: Thanks be to God.

### SERMON

*Let it Be!*

Agnes W. Norfleet

Third in series, Advent's Action Plan

# RESPONSE TO THE WORD

## THE SACRAMENT OF THE LORD'S SUPPER

Rachel Pedersen

*You are invited to come forward, using the center aisle, to partake of the Lord's Supper by intinction (dipping a piece of bread into the cup); return to your seat using the side aisle.*

*Gluten- and casein-free elements are on the center table.*

*You are invited to bring your offering when you come forward.*

## THE INVITATION TO COMMUNION

### THE GREAT THANKSGIVING

One: The Lord be with you.

**All: And also with you.**

One: Lift up your hearts.

**All: We lift them to the Lord.**

One: Let us give thanks to the Lord our God.

**All: It is right to give our thanks and praise.**

## THE LORD'S PRAYER

Our Father who art in heaven, hallowed be thy name, thy kingdom come, thy will be done, on earth as it is in heaven. Give us this day our daily bread. And forgive us our trespasses, as we forgive those who trespass against us. And lead us not into temptation, but deliver us from evil. For thine is the kingdom, and the power, and the glory, forever.  
Amen.

## COMMUNION OF THE PEOPLE

### PRAYER OF DEDICATION

Agnes W. Norfleet

† HYMN 109                      Blest Be the God of Israel

MERLE'S TUNE

† SENDING AND PASSING OF THE PEACE

One: The peace of Christ be with you.

**All: And also with you.**

# **WORSHIP NOTES**

## **ASSISTING WITH COMMUNION**

Elisha Gilette, Deacon

---

## **USHERING**

Tom Willcox

---

## **BULLETIN COVER**

John August Swanson | Nativity Detail

## **Season of Advent - Special Services**

**WEE CHRISTMAS.** Tues., Dec. 19, 4:00 p.m., Sanctuary. Designed for children ages 2 - 5 years and their families, this special retelling of the Christmas Story allows our youngest members to hear and participate in the story of Jesus' birth. Helpers are welcome! [MaryRichards@bmpc.org](mailto:MaryRichards@bmpc.org).

**LONGEST NIGHT SERVICE.** Wed., Dec. 20, 7:00 p.m., Sanctuary and livestreamed. This contemplative worship service is for anyone yearning for comfort amid personal grief and hope for a more peaceful world. A meditation by the Rev. Dr. Kirby Lawrence Hill will be accompanied by prayer, the singing of carols and lighting candles to lead us through darkness toward healing and wholeness. A labyrinth on the Education Building Lawn invites walkers following the service, weather permitting.

**CHRISTMAS EVE FAMILY SERVICE.** 4:30 p.m., Sanctuary and livestreamed. Family Service with Nativity Tableau and musical leadership by BMPC's Children's Choir, Youth Chorale and the Bryn Mawr Festival Brass. Prelude begins at 4:15 p.m. Infant and toddler childcare available without reservations from 3:45-5:45 p.m. in the Education Building, Room 101.

**CHRISTMAS EVE WORSHIP WITH COMMUNION.** 8:30 p.m., Sanctuary and livestreamed. The Rev. Dr. Agnes W. Norfleet will preach. Assorted congregational and choir carols will be sung, including two World Premieres of works by Kim André Arnesen, commissioned in celebration of BMPC's 150 anniversary year as well as festive arrangements for two trumpets by Richard Webster. Prelude begins at 8:10 p.m.

## **Announcements**

**ADVENT STORY PATH LABYRINTH.** Walking a labyrinth during Advent provides a meaningful way to journey to Bethlehem. The small labyrinth is open daily during Advent, Monday through Friday, 9:00 a.m. - 6:00 p.m. in the Chapel.

**CODE BLUE SHELTER VOLUNTEERS NEEDED.** For the month of January, BMPC will host a Code Blue Shelter to house up to 5 men sleeping outside in Lower Merion on the coldest nights. Volunteers will work in shifts from 8:30p.m. to 6:30 a.m. the nights the shelter is open. A training will take place today at 1:00 p.m. in Congregational Hall for anyone interested in learning more. To receive the sign up link, and if you have questions, please contact [RebeccaKirkpatrick@bmpc.org](mailto:RebeccaKirkpatrick@bmpc.org).

**BMPC MEMBERS ART EXHIBIT.** Ministries Center Art Gallery. Closes today. Come and view the artistry of our BMPC members! This exhibit features works in paint and ceramics. Some of the pieces are for sale and would make excellent Christmas gifts! The exhibit ends today. To purchase any of the works, please contact [mfa@bmpc.org](mailto:mfa@bmpc.org).

**ADVENT GIFT MARKET.** 11:00 a.m., Atrium. AGM representatives will be in the Atrium after worship to process orders. Online orders also may be placed via the AGM website: [www.brynmawragm.com](http://www.brynmawragm.com)

## **Today**

**RAINBOW REINDEER GAMES.** Today, 11:30 a.m., Gymnasium. All youth (grades 6-12) and fifth graders are invited to join in the fun, games, and color powder shenanigans we have planned for our Rainbow Reindeer Games this year! To register, visit <https://bit.ly/RRgames2023>



## **This Week**

**ADVENT HARPSICORD RECITALS.** Tuesday, Dec. 19, noon, Sanctuary. Featuring Edward Landin Senn and Jeffrey Brillhart, performing free 30-minute recitals on BMPC's William Dowd harpsichord.

## **Upcoming**

### **YOUTH INTERNATIONAL MISSION TRIP APPLICATION DEADLINE.**

Mon, Jan. 1, 5:00 p.m. Rising 9-12th graders (current 8-11th graders) are welcome to apply for a spot on the international mission trip to Peru, July 10-20, 2024. Applicants will be notified by February 1st at 5:00 p.m. if they have been accepted.

The application can be found on Realm, the youth ENews, or by emailing Pastor Leigh Devries at [ldevries@bmp.org](mailto:ldevries@bmp.org)

**DEACONS' ANNUAL BLOOD DRIVE.** Mon., Jan. 22, 1:00-6:00 p.m., Congregational Hall. Volunteers needed to donate blood; register online:

<https://bit.ly/2024-Blood-Drive> Contact Monica Devane at 610-520-8823 or [MDevane@bmpc.org](mailto:MDevane@bmpc.org).

# **Calendar**

## **Sunday, December 17**

7:45	a.m.	Childcare (Birth-Kindergarten), Ed. Bldg., Rm. 101
8:00	a.m.	<b>Worship with Communion, Chapel</b>
8:30	a.m.	Sunday Morning Discussion Group, Cannon Room
8:45	a.m.	Art @ 9, Ed. Bldg., Rm. 102
		Filling the Well, Children's Library, Ed. Bldg.
9:55	a.m.	Sunday School Ages 2s, 3s, and Pre-K, Ed. Bldg.
10:00	a.m.	<b>Worship with Baptism &amp; Sanctuary Choir, Sanctuary and Livestreamed Service on <a href="http://www.bmpc.org">www.bmpc.org</a></b>
		Youth Gathering, Gymnasium
10:15	a.m.	Sunday School K-5th Grade, Ed. Bldg.
11:00	a.m.	Family Fellowship, Ed. Bldg.
		Atrium Cafe, Atrium
11:30	a.m.	Rainbow Reindeer Games, Gymnasium

## **Monday, December 18**

6:00	p.m.	Middle School Mondays, Gymnasium
7:00	p.m.	Hunger Committee Meeting, Cannon Room

## **Tuesday, December 19**

10:30	a.m.	Tai Chi (Hybrid), Gymnasium
4:00	p.m.	Wee Christmas, Sanctuary

## **Wednesday, December 20**

10:00	a.m.	Coffee Cup Bible Study (Hybrid), Cannon Room
5:00	p.m.	Longest Night Labyrinth Walk, Ed. Bldg, Front Lawn
5:30	p.m.	Wednesday Night Dinner, Congregational Hall
7:00	p.m.	High School Student Serve, Gymnasium
		Longest Night Worship Service, Sanctuary

### **Thursday, December 21**

11:00	a.m.	Artist's Gathering, Fine Arts Kitchen
7:00	p.m.	Sanctuary Choir Rehearsal, Fine Arts Center

### **Friday, December 22**

No Events Scheduled.

### **Saturday, December 23**

7:00	a.m.	Saturday Morning Men's Group, Converse House Parlor
10:00	a.m.	Searching For Still Water Bereavement Group, Witherspoon Parlor

### **Sunday, December 24**

10:00	a.m.	<b>Sunday Worship with Sanctuary Choir</b> <b>Sanctuary and Livestreamed Service on <a href="http://www.bmpc.org">www.bmpc.org</a></b> The Rev. Dr. Agnes Norfleet will preach.
4:30	p.m.	<b>Christmas Eve Family Service, Sanctuary</b>
8:30	p.m.	<b>Christmas Eve Worship Service with Communion, Sanctuary</b>

## **Worship Staff**

**Agnes W. Norfleet**, Pastor

**Leigh DeVries**, Associate Pastor for Youth & Their Families

**Rebecca Kirkpatrick**, Associate Pastor for Adult Education & Mission

**Kirby Lawrence Hill**, Interim Associate Pastor for Pastoral Care & Senior Adults

**Rachel Pedersen**, Associate Pastor for Children & Family Ministry

**Franklyn C. Pottorff**, Associate Pastor for Congregational Life & Stewardship

**Jeffrey Brillhart**, Director of Music & Fine Arts

**Edward Landin Senn**, Assistant Director of Music



## **Contact Information**

Bryn Mawr Presbyterian Church  
625 Montgomery Avenue, Bryn Mawr, PA 19010

610-525-2821 • [www.bmpc.org](http://www.bmpc.org)

[www.facebook.com/BrynMawrPres](https://www.facebook.com/BrynMawrPres)

[www.instagram.com/BrynMawrPres](https://www.instagram.com/BrynMawrPres)

[www.twitter.com/BrynMawrPres](https://www.twitter.com/BrynMawrPres)

[www.youtube.com/user/brynmawrpres](https://www.youtube.com/user/brynmawrpres)

24/7 Answering Service for Pastoral Emergencies:  
610-525-2821

The Middleton Center: 610-525-0766 •  
[info@middletoncenter.org](mailto:info@middletoncenter.org)

The Weekday School (Preschool): 610-525-2821, ext. 8840