

# *Bryn Mawr Presbyterian Church*

Sunday, November 14, 2021 | 10:00 a.m., Sanctuary

Thirty-Third Sunday in Ordinary Time



# WELCOME

## NEW HERE?

We are pleased that you are joining us as we worship God this morning. We invite you to introduce yourself to one of our pastors outside the Sanctuary doors following the Worship Service. All of our programs, ministries, and opportunities for mission are open to everyone. Come join us!

## COVID-19 GUIDELINES

Given the rise in cases due to the Delta variant, masks are now required for both fully vaccinated and unvaccinated people inside church buildings. Masks are not required for outdoor spaces. Please maintain physical distance inside, and be mindful that we are an intergenerational community and that while COVID vaccines are available for children ages five to 11, they may not have been vaccinated.

## LIVESTREAMED CHURCH SERVICES

In addition to in-person worship, the Sunday Worship Services are available to watch live at 10:00 a.m. on our live-streaming page: [www.bmpc.org/livestream](http://www.bmpc.org/livestream). For your convenience, the service also will be posted on our Worship Services page on the following day.

## CHILDCARE AND SUNDAY SCHOOL

Childcare is available on Sundays from 8:00 a.m. to noon for children ages six months and older. See Sunday School class information on this page. Please contact Pastor Rachel, [RachelPedersen@bmpc.org](mailto:RachelPedersen@bmpc.org) or Childcare Coordinator Rebecca Kellich at [childcare@bmpc.org](mailto:childcare@bmpc.org) with any questions.

## WEEKLY E-NEWSLETTER

Subscribe to our BMPC eNews by visiting our website: [www.bmpc.org](http://www.bmpc.org).

## Today's Schedule

### Childcare

8:00 a.m., Ed. Bldg., Rm. 102

### 10:00 a.m. Worship, Sanctuary

#### Sunday School

Ages 2 to Grade 5  
10:00 a.m., Ed. Bldg.

#### Youth Gathering & Confirmation Class

10:00 a.m., Foerderer House,  
2nd Floor

#### Playground Fellowship

11:00 a.m., Playground

#### Next Steps in Our Congregational Anti-Racism Work

11:15 a.m., Chapel

#### Nominating Committee Meeting

11:30 a.m., Congregational Hall

In case of rain, signs will direct you to an alternate location.



# GATHERING OF GOD'S PEOPLE

## PRELUDE

Meditation in B-flat  
Bavarian Chimes  
Handbell Choir

John C. Dare

## WELCOME

Franklyn C. Pottorff

## † CALL TO WORSHIP

One: Out of the fullness of the lives God  
has given us, we have come to worship and praise.

**All: With thanks we offer to God the creativity of our minds,  
the warmth of our hearts and the joy of our spirits.**

One: We love because God first loved us,  
freeing us from the power of sin and death.

**All: With glad hearts let us join together in singing praise to God,  
Creator, Word and Holy Spirit.**

## † HYMN 761 Called as Partners in Christ's Service

BEECHER

## CALL TO CONFESSION

### AND PRAYER OF CONFESSION (*in unison*)

Eternal God, you love us steadfastly, but we have trouble loving in return;  
you call us but we have wax-filled ears;  
you reveal yourself, but our eyelids are heavy;  
you lead us toward our neighbor, but we build walls around ourselves;  
you hate evil, injustice and alienation, but we get used to it.

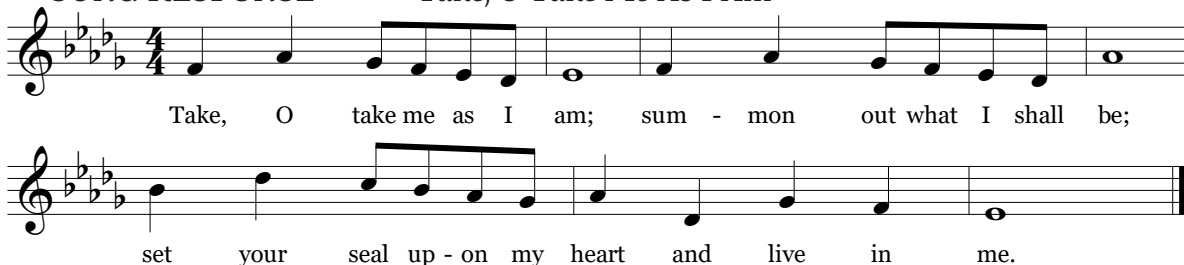
O God, we pray, help us to see ourselves both as we are and as we might be  
before you, and draw us by your Spirit's tether into your forgiving,  
renewing and serviceable grace, through the mercies of Christ.

*A moment of silence for personal reflection and confession.*

## ASSURANCE OF PARDON

### SUNG RESPONSE

Take, O Take Me As I Am



† Please stand, if able.

# PROCLAMATION OF THE WORD

**PRAYER FOR ILLUMINATION**

Franklyn C. Pottorff

**FIRST LESSON**

Psalm 146 (*p. 581 in pew Bible*)

**ANTHEM**

The Prayer of St. Patrick  
Youth Chorale

William M. Schoenfeld

Christ be with me, Christ within me, Christ before me, Christ beside me, Christ to win me, Christ to comfort and restore me, Christ beneath me, Christ above me, Christ in quiet, Christ in danger, Christ in hearts of all that love me, Christ in mouth of friend and stranger.

**SECOND LESSON** Matthew 25: 31-46 (*pg. 29 in pew Bible*)

Rebecca Kirkpatrick

One: The Word of the Lord.

All: **Thanks be to God.**

**SERMON**

*Welcoming the Stranger*

Rebecca Kirkpatrick

† **HYMN 754**

Help Us Accept Each Other

BARONITA

## RESPONSE TO THE WORD

† **AFFIRMATION OF FAITH** (*in unison*)

Franklyn C. Pottorff

I believe in God the Father Almighty, Maker of heaven and earth,  
and in Jesus Christ his only Son our Lord;  
who was conceived by the Holy Ghost, born of the Virgin Mary,  
suffered under Pontius Pilate, was crucified, dead, and buried;  
he descended into hell; the third day he rose again from the dead;  
he ascended into heaven,  
and sitteth on the right hand of God the Father Almighty;  
from thence he shall come to judge the quick and the dead.

I believe in the Holy Ghost; the holy catholic church;  
the communion of saints; the forgiveness of sins;  
the resurrection of the body; and the life everlasting. Amen.

~ *The Apostles' Creed*

**PASTORAL PRAYER  
AND THE LORD'S PRAYER**

Our Father who art in heaven, hallowed be thy name, thy kingdom come, thy will be done, on earth as it is in heaven. Give us this day our daily bread. And forgive us our trespasses, as we forgive those who trespass against us. And lead us not into temptation, but deliver us from evil. For thine is the kingdom, and the power, and the glory, forever. Amen.

**MINISTRY MOMENT**                      Advent Gift Market                      Sheila Rohrer

**INVITATION TO DISCIPLESHIP**                      Franklyn C. Pottorff

**OFFERTORY ANTHEM**                      Living God's Love                      Mark Patterson  
Youth Chorale

May the word of Christ dwell richly in you as you teach one another with wisdom and with love; giving thanks to God in all that you do: In the Psalms of praise, in the hymns of faith, and the songs of the spirit too: May the word of Christ dwell richly in you. For you are the people chosen by God to live a life of compassion and kindness to all: Working together, helping each other, living God's love.

† **DOXOLOGY**                      Hymn 606

Praise God, from whom all blessings flow; praise God, all creatures here below; praise God above, ye heavenly host; praise Father, Son, and Holy Ghost. Amen.

† **PRAYER OF DEDICATION**                      Franklyn C. Pottorff

† **HYMN 375**                      Shall We Gather at the River                      HANSON PLACE

† **BENEDICTION AND CHORAL RESPONSE**                      Rebecca Kirkpatrick

**POSTLUDE**                      Marche Triomphale                      Sigfrid Karg-Elert

# **WORSHIP NOTES**

## **SANCTUARY FLOWERS**

Given to the Glory of God and in Loving Memory of  
Dr. Henry Rohrer, Eleanor Rohrer, Robert Dailey and Misty Dailey

---

## **PLAYING THE CARILLON**

Wade FitzGerald

---

## **BULLETIN COVER**

Sanctuary image by Dave Tavani

---

## **COPYRIGHT INFORMATION FOR SUNG RESPONSE**

Take, O Take Me As I Am - Text and Music © 1995 WGRG, Iona Community (admin.  
GIA Publications, Inc.) Reprinted and streamed with permission under  
ONE LICENSE #A-716211. All rights reserved.

# **Announcements**

**CHRISTMAS FLOWER DONATIONS.** Contributions may be given in three categories for listing in the Christmas Eve bulletin: “In memory of,” “In honor of,” or “In celebration of (marriage, retirement, birth, baptism).” Forms are available in the back of the Sanctuary or online at [www.bmpc.org/flower-donations](http://www.bmpc.org/flower-donations). Monies received are used year-round for our floral decorations and the Deacons’ flower ministry. The deadline is Sun., Dec. 5. [SarahMiciek@bmpc.org](mailto:SarahMiciek@bmpc.org).

**LOOKING FOR A CHURCH HOME?** Consider learning more about being in community here by attending our “Discover BMPC” orientation classes on Mondays, Nov. 29 and Dec. 6 at 7:00 p.m. via Zoom conference call. These two classes provide an opportunity to become acquainted, ask questions, and learn more about our church, our Presbyterian heritage, and our mission. Inquirers welcome. [FranklynPottorff@bmpc.org](mailto:FranklynPottorff@bmpc.org).

**CHURCH OFFICE HOURS.** The church office hours now are 8:30 a.m. to 4:30 p.m. This change is being made due to staff schedules. If a pastoral emergency arises outside of office hours, the church’s voicemail system will direct callers to the number for our answering service which contacts the pastor on call.

**DRIVEWAY CLOSURE.** Temporary fencing has been put up along Montgomery Avenue, and the driveway between the Sanctuary and Chapel is expected to be closed to vehicles until the end of November. The Sanctuary, Chapel and Education Building will be accessible to pedestrians via the back parking lot. All vehicles must enter and exit the campus from Radnor Street; please follow directional signs.

**SANCTUARY FLOWER DONATIONS.** Openings currently are available in December for donors who wish to give flowers in memory or in honor of loved ones. If you would like to donate flowers for a Sunday Worship Service, contact Natalie Hoepp at [bmpcflowers@gmail.com](mailto:bmpcflowers@gmail.com).

## **Today**

**NEXT STEPS IN OUR CONGREGATIONAL ANTI-RACISM WORK.** 11:15 a.m., Chapel. The BMPC Anti-Racism Taskforce has been guiding us as a congregation through various conversations regarding race since 2018. Whether you have faithfully participated in these activities, have dipped in and out, or have not yet had a chance to be a part of this work, you are invited to join us for a larger conversation about how we will continue this work into the future. We hope you will come with stories of transformation in your own journey, questions about how our community can effect change, and ideas about where God is leading us next in this work. [AliciaFranklin@bmpc.org](mailto:AliciaFranklin@bmpc.org).

**ADVENT GIFT MARKET.** Today: Opening day for online shopping. Next Sun., Nov 21: In-person shopping begins in the Narthex each Sunday through Dec. 19. All are invited to participate in this creative and meaningful gift-giving program. Orders for gifts, inserts and greeting cards may be placed via the AGM website: [www.BrynMawrAGM.com](http://www.BrynMawrAGM.com); by mailing/dropping off the order form enclosed in this year's catalog to the church office; or at the AGM table in the Narthex. Filled orders may be picked up from a bin labeled "Advent Gift Market" outside the BMPC Chapel door. Donors will be notified when orders are ready, usually 1-2 days after receipt of the order. When requested, insert cards may be downloaded and printed from your home computer.

## ***This Week***

**REPOSE YOGA.** Tuesdays, 9:00-10:15 a.m., Congregational Hall, and via Zoom. This mixed level yoga class uses evidence-based movement and breath exercises to strengthen, stretch and feel better! Suggested donation of \$10 supports the BMPC Hunger Committee. In-person students are required to be vaccinated for COVID-19 and wear masks. A virtual option is available. Contact instructor Karen Gagnier, 610-952-0622 or [karengagnier22@gmail.com](mailto:karengagnier22@gmail.com).

**TAI CHI CLASSES.** Improve your balance, regain serenity, join friends! Class meets every Tuesday at 10:30 a.m. in Congregational Hall, and via Zoom. For information and to sign up, contact Rich McKenzie, teacher at BMPC for 16 years; [rmcktaichi@yahoo.com](mailto:rmcktaichi@yahoo.com) or 610-873-0604.

**DANCE FOR PARKINSON'S DISEASE (PD).** Tuesdays through Dec. 15, 1:00 p.m., Congregational Hall. Two professional dance instructors integrate movements from modern, ballet, tap, folk and social dancing to engage the minds and bodies of persons with PD and their care partners, creating an enjoyable social environment for artistic expression. Persons with PD pay \$5.00 per class; care partners attend for free. Masks and proof of vaccination required. Contact instructor Sharon Friedler for more information: 215-563-5701.

**DOUBLE FEATURE DRIVE-IN MOVIE!** Fri., Nov. 19, 6:00 - 9:30 p.m., Sanctuary Parking Lot. Attend a showing of *The Polar Express* at 6:00 p.m., or *Elf* at 8:00 p.m. (or both!). You may watch the movie from your car, or enjoy outdoor seating by the fire pits. RSVP to [MaryRichards@bmpc.org](mailto:MaryRichards@bmpc.org).



## Upcoming

**ADVENT STORY PATH LABYRINTH.** Walking a labyrinth during Advent provides a meaningful way to journey to Bethlehem. Beginning on Mon., Nov. 29, the small labyrinth is available Monday through Friday, 8:00 a.m. to 7:00 p.m., Saturday, 9:00 a.m. to 3:00 p.m., and Sunday, 11:00 a.m. to 12:00 p.m. in the Chapel. An Advent Labyrinth Journey booklet will be offered to accompany you throughout the season.

**QUIET PRAYER IN ADVENT.** Wednesdays, Dec. 1, 8 and 15, 7:00 - 7:45 p.m., via Zoom. A virtual quiet time for contemplative guided prayer will be offered weekly. Amidst the busyness of the season and week, this prayer session will include Scripture readings, space for reflection, and a time of communal silence. The guided portion of the evenings will be recorded and available on the Caring Ministries webpage. Members of our congregation will lead the sessions. [KikiMcKendrick@bmprc.org](mailto:KikiMcKendrick@bmprc.org).

**ADVENT WORKSHOP.** Sun., Dec. 5, 11:00 a.m., Ed. Bldg. Lawn. This year we will help get ready for our outdoor Christmas Eve Nativity. Join us to make costumes, build sets and create decorations to tell the story of Jesus' birth. Hot chocolate and cookies will be available. [MaryRichards@bmprc.org](mailto:MaryRichards@bmprc.org).

**ADVENT TUESDAY NOON RECITALS.** Tues., Dec. 7, 12:00 p.m., Sanctuary. Join us during the season of Advent for the return of our Tuesday concert series! These concerts may be attended either in person (masks and social distancing required) or via livestream. On Dec. 7 we welcome students from the Nelly Berman School of Music: Alyssa Gabrilovich, piano, and the Mirage Trio (Miro Raj, violin; Apollo Murray, cello; and Sasha Murray, piano).

## Caring and Sharing

**CHRISTMAS ANGELS.** Due to the continuing pandemic, Christmas Angels will be hybrid this year. Several of Gemma's programs remain virtual. For those children, gift cards in \$25 increments from Target, Walmart, Amazon, Five Below, Marshalls/TJ Maxx, ShopRite and Best Buy are preferred. You may purchase gifts for a specific child through SignUp Genius: [https://bit.ly/BMPC\\_Xmas\\_Angels\\_2021](https://bit.ly/BMPC_Xmas_Angels_2021); order from Gemma's Amazon Wish List: <https://bit.ly/GemmaNeeds>; or buy a general gift for a child such as Legos, toiletry sets, Rubik's Cubes, makeup, cards and card games, board games, fidget toys, basketballs, footballs and remote-controlled cars.

Gift cards and unwrapped gifts may be delivered during the Drive-thru Drop Off on Sun., Dec. 5 from 1:00 - 3:00 p.m. at the Education Building's circular driveway on Fishers Road. Gift cards also may be dropped off in the church's secure mailbox at the entrance facing the Radnor Street parking lot. Please note that access to Gemma's offices is restricted. Donation delivery is held at Gemma's Plymouth Meeting campus and is by appointment only. All gifts are due by Tues., Dec. 7. Betty Wu, [BMPCAngels@gmail.com](mailto:BMPCAngels@gmail.com). <sup>9</sup>

**SUPPORT OUR LOCAL REFUGEE EFFORTS.** The BMPC Refugee Support Committee invites you to help resettle an Afghan refugee family on our church campus this fall. Volunteers are needed to welcome and assist a family who will be moving into the Foerderer House in November. To volunteer to help with a variety of needs such as education, job searching and long-term housing, sign up here: <https://bit.ly/refugee-volunteer-signup>. Furnishing and accessory donations may be made by contacting Bobbi Adair at [bobbiadair@comcast.net](mailto:bobbiadair@comcast.net). You also may help by purchasing new items from this Amazon Wish List: <https://bit.ly/family-wish-list>. **HOUSING NEEDED.** Your help would be appreciated to find affordable housing close to public transportation for the asylee family that BMPC members have supported for over three years. This amazing mom works full time in a daycare school, where her three-year-old child is enrolled, and her older daughter attends kindergarten in Lower Merion. Contact Mary French at 610-247-7154.

# Calendar

## Sunday, November 14

8:00	a.m.	Childcare, Ed. Bldg., Rm. 102
8:30	a.m.	Faith Under 5 Sunday School, Virtual Digging Deeper, Virtual Filling the Well, Virtual Sunday Morning Discussion Group, Virtual and Ed. Bldg., Rm 204
9:00	a.m.	Sunday School for Grades 1 & 2, Virtual
10:00	a.m.	<b>Worship, Sanctuary or Livestreamed Service on <a href="http://www.bmpc.org">www.bmpc.org</a></b> Sunday School for ages 2 - 3, Ed. Bldg., Nursery Sunday School for PreK & K, Ed. Bldg., Room 201 Sunday School for Grades 1 & 2, Ed. Bldg., Main Lobby Sunday School for Grade 3, Ed. Bldg., Rm. 202 and Virtual Sunday School for Grades 4 & 5, Ed. Bldg., Rm. 204 and Virtual Confirmation Class, Foerderer House, 2nd Floor Youth Gathering (Middle School and High School), Foerderer House, 2nd Floor
11:00	a.m.	Playground Fellowship, Ed. Bldg., Playground
11:15	a.m.	Next Steps in Our Congregational Anti-Racism Work, Chapel
11:30	a.m.	Nominating Committee Meeting, Congregational Hall
4:00	p.m.	Y-Group Stockings for Gemma, Ed. Bldg., Rm. 104
6:00	p.m.	Night Capture the Flag, Off Campus

### **Monday, November 15**

7:00 p.m. Peacemaking Committee Meeting, Virtual

### **Tuesday, November 16**

9:00 a.m. Repose Yoga, Virtual or Congregational Hall

10:30 a.m. Tai Chi, Virtual or Congregational Hall

1:00 p.m. Dance for Parkinson's Disease, Congregational Hall

5:00 p.m. Mid-Week Meetup, Virtual

6:00 p.m. Tutoring Program, Ed. Bldg.

7:00 p.m. The Spiritual Life, Virtual

### **Wednesday, November 17**

10:00 a.m. Coffee Cup Bible Study, Ed. Bldg., Rm. 204

4:45 p.m. Wednesdays Together, Ed. Bldg. Lobby

5:45 p.m. Youth Chorale, Fine Arts Center

6:30 p.m. Handbells, Fine Arts Center

7:00 p.m. Student Serve, Foerderer House, 2nd Floor

Outreach Committee Meeting, Virtual

Trustees' Meeting, Virtual

### **Thursday, November 18**

7:00 p.m. Hunger Committee Meeting, Virtual

Sanctuary Choir and Bryn Mawr Chamber Singers, Fine Arts Center

### **Friday, November 19**

*No events scheduled.*

### **Saturday, November 20**

7:00 a.m. Saturday Morning Men's Group, Children's Library

2:00 p.m. **Edward J. Huth Memorial Service, Sanctuary  
or Livestreamed Service on [www.bmpc.org](http://www.bmpc.org)**

### **Sunday, November 21**

10:00 a.m. **Worship, Sanctuary or Livestreamed Service on [www.bmpc.org](http://www.bmpc.org)**  
The Rev. Dr. Agnes W. Norfleet will preach.

## **Worship Staff**

**Agnes W. Norfleet**, Pastor

**Brian K. Ballard**, Associate Pastor for Pastoral Care & Senior Adults

**Leigh DeVries**, Associate Pastor for Youth & Their Families

**Rebecca Kirkpatrick**, Associate Pastor for Adult Education & Mission

**Rachel Pedersen**, Associate Pastor for Children & Family Ministry

**Franklyn C. Pottorff**, Associate Pastor for Congregational Life & Stewardship

**Jeffrey Brillhart**, Director of Music & Fine Arts

**Edward Landin Senn**, Assistant Director of Music

## **Contact Information**



Bryn Mawr Presbyterian Church  
625 Montgomery Avenue, Bryn Mawr, PA 19010

610-525-2821 • [www.bmpc.org](http://www.bmpc.org)

[www.facebook.com/BrynMawrPres](https://www.facebook.com/BrynMawrPres)

[www.instagram.com/BrynMawrPres](https://www.instagram.com/BrynMawrPres)

[www.twitter.com/BrynMawrPres](https://www.twitter.com/BrynMawrPres)

[www.youtube.com/user/brynmawrpres](https://www.youtube.com/user/brynmawrpres)

24/7 Answering Service for Pastoral Emergencies: 610-525-2821

The Middleton Center: 610-525-0766 • [info@middletoncenter.org](mailto:info@middletoncenter.org)

The Weekday School (Preschool): 610-525-2821, ext. 8840