

# *Bryn Mawr Presbyterian Church*

Sunday, November 28, 2021 | 10:00 a.m., Sanctuary

First Sunday of Advent





# WELCOME

## NEW HERE?

We are pleased that you are joining us as we worship God this morning. We invite you to introduce yourself to one of our pastors outside the Sanctuary doors following the Worship Service. All of our programs, ministries, and opportunities for mission are open to everyone. Come join us!

## COVID-19 GUIDELINES

Given the rise in cases due to the Delta variant, masks are now required for both fully vaccinated and unvaccinated people inside church buildings. Masks are not required for outdoor spaces. Please maintain physical distance inside, and be mindful that we are an intergenerational community and that while COVID vaccines are now available for children ages five to 11, some children may not have been vaccinated.

## LIVESTREAMED CHURCH SERVICES

In addition to in-person worship, the Sunday Worship Services are available to watch live at 10:00 a.m. on our live-streaming page: [www.bmpc.org/livestream](http://www.bmpc.org/livestream). For your convenience, the service also will be posted on our Worship Services page on the following day.

## CHILDCARE AND SUNDAY SCHOOL

Childcare is available on Sundays from 8:00 a.m. to noon for children ages six months and older. See Sunday School class information on this page. Please contact Pastor Rachel, [RachelPedersen@bmpc.org](mailto:RachelPedersen@bmpc.org) or Childcare Coordinator Rebecca Kellich at [childcare@bmpc.org](mailto:childcare@bmpc.org) with any questions.

## WEEKLY E-NEWSLETTER

Subscribe to our BMPC eNews by visiting our website: [www.bmpc.org](http://www.bmpc.org).

## Today's Schedule

### Childcare

8:00 a.m., Ed. Bldg., Rm. 102

---

### 10:00 a.m. Worship, Sanctuary

---

### Sunday School

Ages 2 to Grade 5  
10:00 a.m., Ed. Bldg.

---

### Worship

### Together Sunday

10:00 a.m., Sanctuary  
For Grades 6-12

---

# GATHERING OF GOD'S PEOPLE

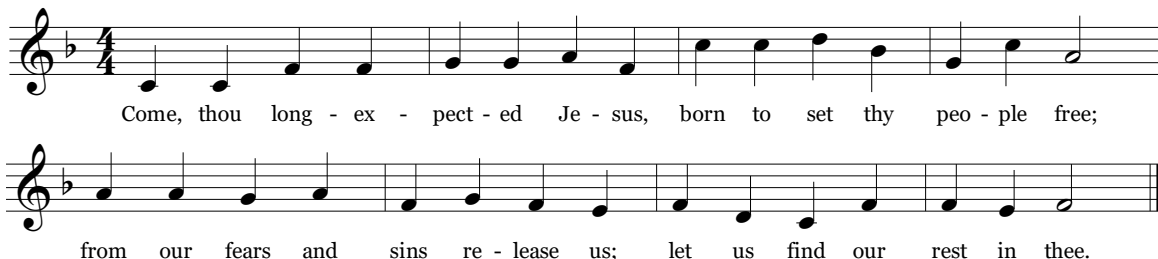
## PRELUDE

This Little Light of Mine  
Joaquin Arias Trio

## WELCOME

Leigh DeVries

## ADVENT INTROIT (Please remain seated.)



## LIGHTING OF THE ADVENT WREATH

Glenn Fagan, Stacey Fagan  
Olivia Blusiewicz & David Blusiewicz

One: The days are surely coming, when the promises of God will be fulfilled.

**All: The days are coming when justice and righteousness will fill the land.**

One: The days are coming when people will live in safety  
and the world will be at peace.

**All: The days are coming when all creation will be redeemed.**

One: On this first Sunday of Advent, we light the candle of hope.

**All: We hope for the future when God will reign over all the world.**

One: May this candle of hope illumine the living of our days!

**All: May our words and actions testify to the promise of what is come!**

One: Let us sing our hope in God.

† **HYMN 367** Come, Ye Thankful People, Come

ST. GEORGE'S WINDSOR

## CALL TO CONFESSION

## AND PRAYER OF CONFESSION (in unison)

O God, upon whom we wait with eager longing, we are not ready for your coming. We look for signs of your presence, but confess our sense of anticipation has been dulled. Your prophetic voice summons us to work for justice, and yet we are easily overwhelmed by the needs of the world. You invite us to be hopeful, but we have lost faith in your promises to redeem the world. Forgive us, we pray, and help us prepare anew for your surprising power and peace.

*A moment of silence for personal reflection and confession.*

† Please stand, if able.

## ASSURANCE OF PARDON

### SUNG RESPONSE      On Those Who Sit In Darkness

On those who sit in dark - ness the sun be-gins to rise, the dawn-ing of for -  
give - ness up - on the sin - ner's eyes. God guides the feet of pil - grims a -  
long the paths of peace. O bless our God and Sav - ior with songs that nev - er cease!

## PROCLAMATION OF THE WORD

### PRAYER FOR ILLUMINATION

Leigh DeVries

### FIRST LESSON      Jeremiah 33:14-16 (*p. 738 in pew Bible*)

### ANTHEM

E'en So, Lord Jesus Quickly Come  
Sanctuary Choir

Paul Manz

Peace be to you and grace from Him who freed us from our sins; Who loved us all and shed His blood that we might saved be. Sing Holy to our Lord, the Lord, Almighty God, who was and is and is to come; Sing Holy Lord! Rejoice in heaven, all ye that dwell therein, rejoice on earth, ye saints below, for Christ is coming soon! E'en so, Lord Jesus, quickly come, and night shall be no more; They need no light, nor lamp, nor sun, for Christ will be their All!

### SECOND LESSON      Luke 21:25-36 (*pg. 85 in pew Bible*)

Agnes W. Norfleet

One: The Word of the Lord.

All: **Thanks be to God.**

### SERMON

*Come Thou Long Expected Jesus*  
Advent Series on Hope - Hope for the Future

Agnes W. Norfleet

### † HYMN 88

O Come, O Come, Emmanuel

VENI EMMANUEL

# RESPONSE TO THE WORD

## † AFFIRMATION OF FAITH *(in unison)*

Franklyn C. Pottorff

Jesus came as a child,  
born of a woman as is every child,  
yet born of God's power as was no other child.  
He lived as a Jew among Jews.  
He announced to his people  
the coming of God's rule of justice and peace on earth.  
We believe that the coming of Jesus  
was itself the coming of God's promised rule.  
Through his life, death, and resurrection,  
he initiates the relationship between God and the human race  
that God always intended.

~ from *A Declaration of Faith*

## PASTORAL PRAYER AND THE LORD'S PRAYER

Our Father who art in heaven, hallowed be thy name, thy kingdom come, thy will be done, on earth as it is in heaven. Give us this day our daily bread. And forgive us our trespasses, as we forgive those who trespass against us. And lead us not into temptation, but deliver us from evil. For thine is the kingdom, and the power, and the glory, forever. Amen.

## INVITATION TO DISCIPLESHIP

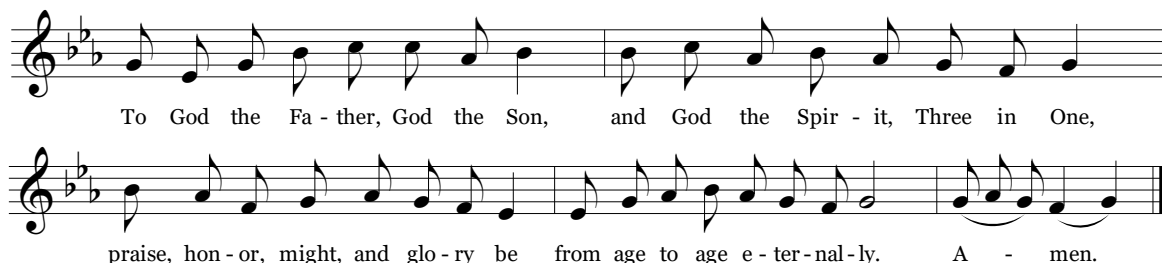
### OFFERTORY ANTHEM Jesus Christ the Apple Tree Sanctuary Choir

Elizabeth Poston

The tree of life my soul hath seen, laden with fruit, and always green: The trees of nature fruitless be compared with Christ the apple tree. His beauty doth all things excel: By faith I know, but ne'er can tell, the glory which I now can see in Jesus Christ the apple tree. For happiness I long have sought, and pleasure dearly I have bought: I missed of all; but now I see 'tis found in Christ the apple tree. I'm weary with my former toil, here I will sit and rest awhile: Under the shadow I will be, of Jesus Christ the apple tree. This fruit doth make my soul to thrive, it keeps my dying faith alive; Which makes my soul in haste to be with Jesus Christ the apple tree.

† **DOXOLOGY**

CONDITOR ALME SIDERUM



† **PRAYER OF DEDICATION**

Franklyn C. Pottorff

† **HYMN 93** Lift Up Your Heads, Ye Mighty Gates

TRURO

† **BENEDICTION AND CHORAL RESPONSE**

Agnes W. Norfleet

**POSTLUDE**

Savior of the Nations, Come

J.S. Bach

## **WORSHIP NOTES**

### **SANCTUARY FLOWERS**

Given to the Glory of God and in Loving Memory of Stephen Paul McConnell, Sr.

### **PLAYING THE CARILLON**

Rob Mygatt

### **BULLETIN COVER**

A Visit © 2011 John August Swanson | Eyekons

### **MUSIC NOTES**

Today we welcome the Joaquin Arias Trio featuring Joaquin Arias, piano, Will Johnson, trumpet, and Ry Miller, bass.

### **COPYRIGHT INFORMATION FOR SUNG RESPONSE**

Text © 1973 The Jubilate Group (admin. Hope Publishing Company). Reprinted and streamed with permission under ONE LICENSE #A-716211. All rights reserved.

Music © 1983 Hope Publishing Company. Reprinted and streamed with permission under ONE LICENSE #A-716211. All rights reserved.

### **COPYRIGHT INFORMATION FOR DOXOLOGY**

Text © 1949 Church Pension Fund. Reprinted and streamed with permission under ONE LICENSE #A-716211. All rights reserved.

## **Announcements**

**CHRISTMAS FLOWER DONATIONS.** Contributions may be given in three categories for listing in the Christmas Eve bulletin: “In memory of,” “In honor of,” or “In celebration of (marriage, retirement, birth, baptism).” Forms are available in the back of the Sanctuary or online at [www.bmpc.org/flower-donations](http://www.bmpc.org/flower-donations). Monies received are used year-round for our floral decorations and the Deacons’ flower ministry. The deadline is next Sunday, Dec. 5. [SarahMicie@bmpc.org](mailto:SarahMicie@bmpc.org).

**LOOKING FOR A CHURCH HOME?** Consider learning more about being in community here by attending our “Discover BMPC” orientation classes on Mondays, Nov. 29 and Dec. 6 at 7:00 p.m., via Zoom. These two classes provide an opportunity to become acquainted, ask questions, and learn more about our church, our Presbyterian heritage, and our mission. Inquirers welcome.

[FranklynPottorff@bmpc.org](mailto:FranklynPottorff@bmpc.org).

**ADVENT ISSUE OF THE MESSENGER.** Copies are available in the Narthex or you also may read it online: <https://bit.ly/21advent-messenger>.

**DRIVEWAY CLOSURE.** Temporary fencing has been put up along Montgomery Avenue, and the driveway between the Sanctuary and Chapel is expected to be closed to vehicles until the end of December. The Sanctuary, Chapel and Education Building will be accessible to pedestrians via the back parking lot. All vehicles must enter and exit the campus from Radnor Street; please follow directional signs.

## **Today**

**ADVENT GIFT MARKET.** In-person shopping in the Narthex today and each Sunday through Dec. 19. All are invited to participate in this creative and meaningful gift-giving program. Orders for gifts, inserts and greeting cards may be placed via the AGM website: [www.BrynMawrAGM.com](http://www.BrynMawrAGM.com); by mailing/dropping off the order form enclosed in this year’s catalog to the church office; or at the AGM table in the Narthex. Filled orders may be picked up from a bin labeled “Advent Gift Market” outside the BMPC Chapel door. Donors will be notified when orders are ready, usually 1-2 days after receipt of the order. When requested, insert cards may be downloaded and printed from your home computer. Marian Chitester, [mmcthistle@verizon.net](mailto:mmcthistle@verizon.net).

## **This Week**

**ADVENT STORY PATH LABYRINTH.** Walking a labyrinth during Advent provides a meaningful way to journey to Bethlehem. Beginning on Mon., Nov. 29, the small labyrinth is available Monday through Friday, 9:00 a.m. to 5:00 p.m., Saturday, 9:00 a.m. to 3:00 p.m., and Sunday, 11:00 a.m. to 12:00 p.m. in the Chapel. An Advent Labyrinth Journey booklet is provided to accompany you throughout the season.

**REPOSE YOGA.** Tuesdays, 9:00-10:15 a.m., Congregational Hall, and via Zoom. This mixed level yoga class uses evidence-based movement and breath exercises to strengthen, stretch and feel better! Suggested donation of \$10 supports the BMPC Hunger Committee. In-person students are required to be vaccinated for COVID-19 and wear masks. A virtual option is available. Contact instructor Karen Gagnier, 610-952-0622 or [karengagnier22@gmail.com](mailto:karengagnier22@gmail.com).

**TAI CHI CLASSES.** Improve your balance, regain serenity, join friends! Class meets every Tuesday at 10:30 a.m. in Congregational Hall, and via Zoom. For information and to sign up, contact Rich McKenzie, teacher at BMPC for 16 years; [rmcktaichi@yahoo.com](mailto:rmcktaichi@yahoo.com) or 610-873-0604.

**DANCE FOR PARKINSON'S DISEASE (PD).** Tuesdays through Dec. 15, 1:00 p.m., Congregational Hall. Two professional dance instructors integrate movements from modern, ballet, tap, folk and social dancing to engage the minds and bodies of persons with PD and their care partners, creating an enjoyable social environment for artistic expression. Persons with PD pay \$5.00 per class; care partners attend for free. Masks and proof of vaccination required. Contact instructor Sharon Friedler for more information: 215-563-5701.

**QUIET PRAYER IN ADVENT.** Wednesdays, Dec. 1, 8 and 15, 7:00 - 7:45 p.m., via Zoom. A virtual quiet time for contemplative guided prayer will be offered weekly. Amidst the busyness of the season and week, this prayer session will include Scripture readings, space for reflection, and a time of communal silence. The guided portions of the evenings will be recorded and available on the Caring Ministries webpage. Members of our congregation will lead the sessions. [KikiMcKendrick@bmpc.org](mailto:KikiMcKendrick@bmpc.org).

## **Next Sunday**

**ADVENT WORKSHOP.** Sun., Dec. 5, 11:00 a.m., Ed. Bldg. Lawn. This year we will help prepare for our outdoor Christmas Eve Nativity. Join us to make costumes, build sets, and create decorations to tell the story of Jesus' birth. Hot chocolate and cookies will be available. [MaryRichards@bmpc.org](mailto:MaryRichards@bmpc.org).



**CHRISTMAS ANGELS.** Due to the continuing pandemic, Christmas Angels will be hybrid this year. Several of Gemma's programs remain virtual. For those children, gift cards in \$25 increments from Target, Walmart, Amazon, Five Below, Marshalls/TJ Maxx, ShopRite and Best Buy are preferred. You may purchase gifts for a specific child through SignUp Genius: [https://bit.ly/BMPC\\_Xmas\\_Angels\\_2021](https://bit.ly/BMPC_Xmas_Angels_2021); order from Gemma's Amazon Wish List: <https://bit.ly/GemmaNeeds>; or buy a general gift for a child, such as Legos, toiletry sets, Rubik's Cubes, makeup, cards and card games, board games, fidget toys, basketballs, footballs and remote-controlled cars.

Gift cards and unwrapped gifts may be delivered during the Drive-thru Drop Off on Sun., Dec. 5 from 1:00 - 3:00 p.m. at the Education Building's circular driveway on Fishers Road. Gift cards also may be dropped off in the church's secure mailbox at the entrance facing the Radnor Street parking lot. Please note that access to Gemma's offices is restricted. Donation delivery is held at Gemma's Plymouth Meeting campus and is by appointment only. All gifts are due by Tues., Dec. 7. Betty Wu, [BMPCAngels@gmail.com](mailto:BMPCAngels@gmail.com).

**SERVE REFRESHMENTS WITH THE WELCOME CHURCH.** Sun., Dec. 5. Join the BMPC Outreach Council and our mission partner The Welcome Church in offering hospitality and refreshments for its weekly outdoor worship service at Aviator Park on the Ben Franklin Parkway in Philadelphia. Carpools leave BMPC at 1:45 p.m. and return by 5:00 pm. The Welcome Church, a congregation of the Evangelical Lutheran Church in America, proclaims the hope and love of a gracious God for all people, especially those experiencing homelessness. Sign up: [AliciaFranklin@bmpc.org](mailto:AliciaFranklin@bmpc.org).

## **Upcoming**

**ADVENT TUESDAY NOON RECITALS.** Tues., Dec. 7, 12:00 p.m., Sanctuary. Join us during the season of Advent for the return of our Tuesday concert series! These concerts may be attended either in person (masks and social distancing required) or via livestream: <https://www.bmpc.org/livestream>. On Dec. 7 we welcome students from the Nelly Berman School of Music: Alyssa Gabrilovich, piano, and the Mirage Trio (Miro Raj, violin; Apollo Murray, cello; and Sasha Murray, piano).

**RAINBOW REINDEER GAMES.** Sun., Dec. 12, 11:15 a.m., Foerderer House. Join us for silly games, laughs, and fellowship at our second annual Rainbow Reindeer Games! We will have pizza for lunch in Foerderer House and then move to the front lawn for all the fun. [JackLiskey@bmpc.org](mailto:JackLiskey@bmpc.org).

**JOY ABOUNDS - SINGING CITY AT THE HOLIDAYS.** Sun., Dec. 12, 3:00 p.m., Sanctuary. BMPC hosts Singing City in its return to live performances with a jazz-infused concert to ring in the holidays. The choir is joined by Pat Bianchi, one of the finest jazz organists in America, and his trio. The concert features works by Adolphus Hailstork, André Thomas, Roland Carter, Jacob Narverud, Rosephanye Powell, Brian Mann, G.F. Handel, Kim André Arnesen, and more. Tickets are available through Singing City's online box office: <https://bit.ly/joy-abounds-concert>. Church members may enter BMPC as the promo code to receive a \$5 discount on tickets.

**LONGEST NIGHT SERVICE.** Tues., Dec. 21, 7:00 p.m., Sanctuary. This special worship service is for anyone who finds joy and celebration difficult to experience during the Christmas season. Scripture readings, the singing of carols, a brief meditation by the Rev. Brian K. Ballard, and a time of prayer to express our yearnings for healing and wholeness are intended to lead us through the long darkness. This service will be livestreamed on the church website and BMPC's Facebook page and YouTube channel. A labyrinth on the Education Building Lawn invites walkers following the service, weather permitting.

## ***Caring and Sharing***

**SUPPORT OUR LOCAL REFUGEE EFFORTS.** The BMPC Refugee Support Committee invites you to help resettle an Afghan refugee family on our church campus this fall. Volunteers are needed to welcome and assist a family who is moving into the Foerderer House. To volunteer to help with a variety of needs such as education, job searching and long-term housing, sign up here:

<https://bit.ly/refugee-volunteer-signup>. Furnishing and accessory donations may be made by contacting Bobbi Adair at [bobbiadair@comcast.net](mailto:bobbiadair@comcast.net).

**CHRISTMAS JOY OFFERING.** Supporting past, present and future leaders! A Presbyterian tradition since the 1930s, this Offering distributes gifts equally to the Assistance Program of the Board of Pensions and to Presbyterian-related schools and colleges that serve communities of color. The Assistance Program provides critical financial support to church workers and their families. Look for offering envelopes in the pew holders on Dec. 12 and 19, or note "Christmas Joy" on the memo line of your check.

**HOUSING NEEDED.** We need your help with finding affordable housing close to public transportation for the asylee family that BMPC members have supported for over three years. This amazing mom works full time in a daycare school, where her three-year-old child is enrolled, and her older daughter attends kindergarten in Lower Merion. Contact Mary French at 610-247-7154.

# **Calendar**

## **Sunday, November 28**

8:00	a.m.	Childcare, Ed. Bldg., Rm. 102
8:30	a.m.	Filling the Well, Virtual
10:00	a.m.	<b>Worship, Sanctuary or Livestreamed Service on <a href="http://www.bmpc.org">www.bmpc.org</a></b> Sunday School for ages 2 - 3, Ed. Bldg., Nursery Sunday School for PreK & K, Ed. Bldg., Room 201 Sunday School for Grades 1 & 2, Ed. Bldg., Main Lobby Sunday School for Grade 3, Ed. Bldg., Rm. 202 and Virtual Sunday School for Grades 4 & 5, Ed. Bldg., Rm. 204 and Virtual Worship Together Sunday for Grades 6-12, Sanctuary
11:00	a.m.	Advent Story Path Labyrinth Open Walk, Children's Chapel
12:00	p.m.	Baptism Service, Sanctuary Lawn

## **Monday, November 29**

9:00	a.m.	Advent Story Path Labyrinth Open Walk, Children's Chapel
7:00	p.m.	Discover BMPC Class, Virtual

## **Tuesday, November 30**

9:00	a.m.	Advent Story Path Labyrinth Open Walk, Children's Chapel Repose Yoga, Virtual or Congregational Hall
10:30	a.m.	Tai Chi, Virtual or Congregational Hall
1:00	p.m.	Dance for Parkinson's Disease, Congregational Hall
5:00	p.m.	Mid-Week Meetup, Virtual
6:00	p.m.	Tutoring Program, Ed. Bldg.

## **Wednesday, December 1**

9:00	a.m.	Advent Story Path Labyrinth Open Walk, Children's Chapel
10:00	a.m.	Coffee Cup Bible Study, Ed. Bldg., Room 204
4:45	p.m.	Wednesdays Together, Ed. Bldg., Lobby
6:30	p.m.	Handbells, Fine Arts Center
7:00	p.m.	Quiet Prayer in Advent, Virtual Student Serve, Foerderer House, 2nd Floor Worldwide Ministries Committee Meeting, Ed. Bldg., Rm. 204

## **Thursday, December 2**

9:00	a.m.	Advent Story Path Labyrinth Open Walk, Children's Chapel
6:00	p.m.	Refugee Committee Meeting, Virtual
7:00	p.m.	Genesis from Scratch, Ed. Bldg., Rm. 204 Sanctuary Choir and Bryn Mawr Chamber Singers, Fine Arts Center

### **Friday, December 3**

9:00 a.m. Advent Story Path Labyrinth Open Walk, Children's Chapel

### **Saturday, December 4**

7:00 a.m. Saturday Morning Men's Group, Ed Bldg., Rm. 204

9:00 a.m. Advent Story Path Labyrinth Open Walk, Children's Chapel

### **Sunday, December 5**

10:00 a.m. **Worship, Sanctuary or Livestreamed Service on [www.bmpc.org](http://www.bmpc.org)**  
The Rev. Dr. Agnes W. Norfleet will preach.

## **Worship Staff**

**Agnes W. Norfleet**, Pastor

**Brian K. Ballard**, Associate Pastor for Pastoral Care & Senior Adults

**Leigh DeVries**, Associate Pastor for Youth & Their Families

**Rebecca Kirkpatrick**, Associate Pastor for Adult Education & Mission

**Rachel Pedersen**, Associate Pastor for Children & Family Ministry

**Franklyn C. Pottorff**, Associate Pastor for Congregational Life & Stewardship

**Jeffrey Brillhart**, Director of Music & Fine Arts

**Edward Landin Senn**, Assistant Director of Music

## **Contact Information**



Bryn Mawr Presbyterian Church  
625 Montgomery Avenue, Bryn Mawr, PA 19010

610-525-2821 • [www.bmpc.org](http://www.bmpc.org)

[www.facebook.com/BrynMawrPres](https://www.facebook.com/BrynMawrPres)

[www.instagram.com/BrynMawrPres](https://www.instagram.com/BrynMawrPres)

[www.twitter.com/BrynMawrPres](https://www.twitter.com/BrynMawrPres)

[www.youtube.com/user/brynmawrpres](https://www.youtube.com/user/brynmawrpres)

24/7 Answering Service for Pastoral Emergencies: 610-525-2821

The Middleton Center: 610-525-0766 • [info@middletoncenter.org](mailto:info@middletoncenter.org)

The Weekday School (Preschool): 610-525-2821, ext. 8840