

Bryn Mawr Presbyterian Church

Sunday, May 15, 2022 | 10:00 a.m., Sanctuary

Fifth Sunday of Easter



WELCOME

NEW HERE?

We are pleased that you are joining us as we worship God this morning. We invite you to introduce yourself to one of our pastors in the Atrium following the Worship Service. All of our programs, ministries, and opportunities for mission are open to everyone. Come join us!

COVID-19 GUIDELINES

Masks are optional inside church buildings, although masks may be required in some areas of the Education Building. Please maintain physical distance inside, and be mindful that we are an intergenerational community and that while COVID vaccines are available for children ages five to 11, some children may not have been vaccinated.

LIVESTREAMED CHURCH SERVICES

In addition to in-person worship, the Sunday Worship Services are available to watch live at 10:00 a.m. on our livestreaming page: www.bmpc.org/livestream. For your convenience, the service also will be posted on our Worship Services page on Monday.

CHILDCARE AND SUNDAY SCHOOL

Childcare is available on Sundays from 8:00 a.m. to noon for children ages six months and older. See Sunday School class information on this page. Please contact Childcare Coordinator Rebecca Kellich at childcare@bmpc.org with any questions.

WEEKLY E-NEWSLETTER

Subscribe to our BMPC eNews by visiting our website: www.bmpc.org.

Today's Schedule

Childcare

8:00 a.m., Ed. Bldg., Rm. 102

10:00 a.m. Worship, Sanctuary

Sunday School

Ages 2 to Grade 5
10:00 a.m., Ed Bldg.

Confirmation Class

10:00 a.m.
Foerderer House, 2nd Floor

Youth Gathering

10:00 a.m., Gymnasium

Atrium Café

11:00 a.m.
Coffee and Fellowship, Atrium

Confirmation Expo

11:00 a.m., Gymnasium

Diane Burko Art Exhibit

9:00 a.m. – noon
Fine Arts Gallery,
Ministries Center

GATHERING OF GOD'S PEOPLE

PRELUDE

Soliloquy

Philip Moore

WELCOME

Franklyn C. Pottorff

† CALL TO WORSHIP

One: Bless the Lord, O my soul.

All: O Lord our God, you are very great.

One: You are clothed with honor and majesty,
wrapped in light as with a garment.

**All: By the streams the birds of the air have their habitation;
they sing among the branches.**

One: From your lofty abode you water the mountains;
the earth is satisfied with the fruit of your work.

**All: Bless the Lord, O my soul,
and all that is within me; bless God's holy name.**

† HYMN 32

I Sing the Mighty Power of God

ELLACOMBE

CALL TO CONFESSION

AND PRAYER OF CONFESSION *(in unison)*

God of hosts, you have created us in goodness
and given us a job to do to care for your goodness.

We have turned away from you,
neglecting the welfare of your creation,
ignoring the plight of your people,
taking from Earth what we cannot give back.

We have not helped our neighbors in need,
kept peace within our families,
or tended the goodness you have planted in our own lives.

Forgive us, and lead us to a more gracious life.

In your compassion, Creator God, turn us to your way,
and restore us to our primary vocation - to steward your creation.

A moment of silence for personal reflection and confession.

ASSURANCE OF PARDON

SUNG RESPONSE

Christ, our Companion

BUNESSAN



PROCLAMATION OF THE WORD

PRAYER FOR ILLUMINATION

Franklyn C. Pottorff

FIRST LESSON

Romans 8:22-27 (*p. 158 in pew Bible*)

ANTHEM

The Whisper of a Distant Wind
Sanctuary Choir

Edward Landin Senn

The whisper of a distant wind speaks peace into the void. The whisper of a distant wind inspires the lifeless breath. Come, Holy Spirit, come. The whisper of a distant wind claims hope is drawing near. The whisper of a distant wind reminds us of our song. Come, Holy Spirit, come.

SECOND LESSON

Psalms 8 (*p. 492 in pew Bible*)

Agnes W. Norfleet

One: The Word of the Lord.

All: **Thanks be to God.**

SERMON

Created for Awe and Wonder
Second of Three Sermons on Eco-Faithfulness

Agnes W. Norfleet

† HYMN 713 Touch the Earth Lightly

TENDERNESS

RESPONSE TO THE WORD

† AFFIRMATION OF FAITH (*in unison*)

Brian K. Ballard

We affirm that the universe of matter, energy, and life
is God's good creation in all its parts.

Therefore we may work and play in it
and explore it with wonder and joy.

God included human beings among the creatures he made
and charged them to care for other living things.

† Please stand, if able.

We acknowledge we are kin to the other creatures.
 We are dependent on the systems that sustain all life.
 We hold the earth in trust
 for future generations of living things.
 The Lord forbids us to plunder, foul and destroy it.
 The Lord expects us to produce, to consume, to reproduce
 in ways that make the world's goodness available to all people
 and reflect God's love for all creatures.
 The Lord bids us use our technical skills
 for beauty, order, health, and peace.

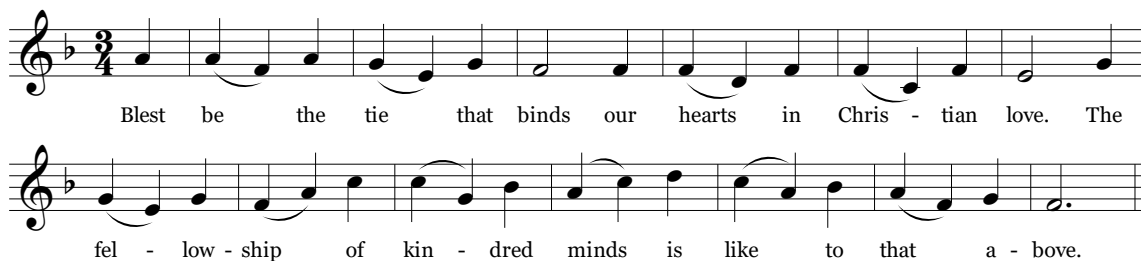
~ Excerpt from a *Declaration of Faith*

RECEPTION OF NEW MEMBERS

Franklyn C. Pottorff

CONGREGATIONAL RESPONSE Blest Be the Tie That Binds

DENNIS



PASTORAL PRAYER AND THE LORD'S PRAYER

Brian K. Ballard

Our Father who art in heaven, hallowed be thy name, thy kingdom come, thy will be done, on earth as it is in heaven. Give us this day our daily bread. And forgive us our trespasses, as we forgive those who trespass against us. And lead us not into temptation, but deliver us from evil. For thine is the kingdom, and the power, and the glory, forever. Amen.

INVITATION TO DISCIPLESHIP

OFFERTORY ANTHEM

Laudate Dominum

Wolfgang Amadeus Mozart

Sanctuary Choir

Valerie Haber, Soprano

Sing praise to God above all ye nations, praise Him ye people, all ye souls on earth. For He hath shown His kindness toward us. His love and merciful kindness, and the truth of God lasteth forever, lasteth for all eternity. Praise to the Father and Son also, and the Holy Spirit as it was then and will ever be both now and always through the centuries everlasting. Amen.

*Please fill in the Friendship Pad at the end of your pew;
 pass it down your row and back again.*

- † **DOXOLOGY 606** Praise God, from Whom All Blessings Flow OLD HUNDREDTH
Praise God, from whom all blessings flow; praise God, all creatures here below;
praise God above, ye heavenly host; praise Father, Son, and Holy Ghost. Amen.
- † **PRAYER OF DEDICATION** Brian K. Ballard
- † **HYMN 36** For the Fruit of All Creation AR HYD Y NOS
- † **BENEDICTION AND CHORAL RESPONSE** Agnes W. Norfleet
- POSTLUDE** “Allegro Moderato” from Symphonie VI Charles Marie Widor

WORSHIP NOTES

PLAYING THE CARILLON

Wade FitzGerald

BULLETIN COVER

Painting by Diane Burko, *Disappearing Amazon 3*, on display in the
BMPC Art Gallery in the Ministries Center.

RESPONSE

Text: Susan Palo Cherwien 1996. Music: Gaelic Melody
©1996 Augsburg Fortress. Reprinted and streamed with permission under
ONE LICENSE #A-716211. All rights reserved.

WELCOMING NEW MEMBERS

New members received by Session today
and recognized during this morning's worship service:

Elizabeth and Brian Cleary
Susan and Dan Henderson

Lacey and Jared Long
Jen and Matt Lowell

Katie and Jarrod Quigley
Barbara and Ted Morse

MUSIC NOTES

"The Whisper of a Distant Wind" was written for Jeffrey Brillhart and the Sanctuary Choir of Bryn Mawr Presbyterian Church and receives its world premiere this morning, Sunday, May 15, 2022. The text comes from a newly-written hymn for the season of Pentecost by David Bjorlin (b. 1984), who teaches Fellowship in Music and Worship at North Park College in Chicago, IL, and is Pastor of Worship and Creative Art at Resurrection Covenant Church, also in Chicago. Pentecost is a mysterious day in the church year, and this beautiful text conveys the fact that the Holy Spirit is present, bringing peace and breath to our lives, as well as hope and song. As I spent time meditating on this text and how it would evolve into an anthem, a steady and flowing melody presented itself and is manipulated by various voice parts and also changes key and modality throughout the piece. - Edward Landin Senn (b. 1988).

Announcements

2021 ANNUAL REPORT. Copies of the 2021 Annual Report are available in the display racks in the Narthex, the Atrium and the Ministries Center.

SABBATICAL NEWS. Pastor Rebecca Kirkpatrick will be on sabbatical through July 31. During this extended time away from BMPC Rebecca will be spending time with her family and developing new adult education and mission resources for our congregation. In her absence, Alicia Franklin, assistant for Adult Education and Mission, is available to support our ongoing work in mission and to answer any questions.

SANCTUARY FLOWER DONATIONS. Openings are available for next Sunday, May 22, June 12 and 26 for donors who wish to give flowers in memory of or in honor of loved ones. Our Deacons then deliver small arrangements of the Sanctuary flowers to homebound members. If you would like to donate flowers for a Sunday Worship Service, contact Natalie Hoepp at bmpcflowers@gmail.com.

Today

CONFIRMATION EXPO. 11:00 a.m., Gymnasium. Every year our Confirmation students engage in a Confirmation Discipleship Project, which is a 30-day daily spiritual practice. After 30 days our Confirmands create presentations that center on the impact of the chosen spiritual practice, reflecting each Confirmand's relationship with God and their understanding of faith. Since 2020 these projects have been virtual, but we are returning to in-person presentations in the gym this year! All are welcome to stop by the expo after worship today and hear about our Confirmation students' remarkable experiences with their spiritual practices. Confirmation is next Sunday, May 22.

This Week

SACRED THREADS: STUDYING THE BEATITUDES. Wednesdays, May 18 and June 1, 7:00-8:15 p.m., via Zoom. Sacred Threads is an exploration using J. Ellsworth Kalas' book, *Beatitudes from the Backside*, as our guide and scripture passages from Matthew 5:4-7; 10-11. Sacred Threads is a program open to all who are curious about the threads that knit our faith together. Led by the Rev. Betty Wright-Riggins, Middleton Center spiritual director. For more information, contact KikiMcKendrick@bmpc.org.

WHAT IS OUR VISION FOR THE FUTURE OF BMPC? As the 150th anniversary of BMPC approaches in 2023, the 150th Vision Committee will facilitate a congregation-wide conversation to discern and affirm future directions for BMPC's ministry. Our process will begin with a series of public forums in May, followed by focus groups in the fall and a congregational survey in early 2023. Our hope is for every member to share their views and vision for the future.

Please contact Liz Ellis at LizEllis@bmpc.org to reserve a place at one of the following public forums:

- Tues., May 17, 7:00-8:00 p.m., Virtual Public Forum, Zoom
<https://bit.ly/150-zoom-forum>
- Sun., May 22, 11:15 a.m.-12:15 p.m., Fullerton Room (In person only)

TENTH GRADE BAKING EVENT. Sat., May 21, 9:00-11:30 a.m., BMPC Kitchen. Youth members in 10th grade are invited to bake cookies and brownies for the University City Hospitality Coalition, an organization that provides holistic support to the homeless and hungry in University City. Contact LeighDeVries@bmpc.org for more information.

Upcoming

FIFTH GRADE STEP-UP DAY & HYMNAL PRESENTATION. Sun., June 5, 9:15 a.m. Fifth grade students, their families and those who have helped with their Sunday School classes are invited for a light breakfast in Congregational Hall before the 10:00 a.m. service. During the Children's Moment, we distribute hymnals to our fifth graders as they bridge from the children's program to the youth program. Contact MaryRichards@bmpc.org if your child is participating.

COMMUNITY FORUM. Sun., June 5, 11:15 a.m., Congregational Hall. The BMPC Community Forum will host Trudy Rubin, the Worldview columnist of The Philadelphia Inquirer who has written extensively on Putin, Russia, and the war in Ukraine. Rubin's presentation will include a question and answer session. No preregistration required. ElenaPerri@bmpc.org.

VACATION BIBLE CAMP 2022. Mon., June 20 - Fri., June 24. This year's VBC theme is "Follow Me!" Meet the people and explore the places where Jesus taught and served. From a stormy sea to a crowded city street, come travel with Jesus' disciples and learn how you can help share God's love with others. VBC is held from 9:00 a.m. - 12:00 p.m., for ages 3 years to 5th grade. Registration for three year olds is closed. Volunteers of all ages are invited to sign up to help make this a special week for the children of our church and community. Register campers online: <https://bit.ly/vbc-22>.
MaryRichards@bmmpc.org.

JOHNSONBURG PLUNGE. June 24-26. Rising sixth to eighth graders are invited, along with their parents, to experience camp during a weekend of worship, play, and service! The cost will be \$200 per youth, and \$150 per adult, with scholarships available. To register, contact JackLiskey@bmmpc.org.

PHILLY SUMMER MISSION. July 10-15. Rising ninth to 12th graders are invited to join us on our Philly Summer Mission trip. We will be serving with The Common Place, a non-profit organization that assists children and families in Southwest Philadelphia through educational programs, social services, and collaboration with other groups. The trip costs \$500 per student, with scholarships available. To register, contact JackLiskey@bmmpc.org.

YOUTH CAMP. July 31-Aug. 5. For rising sixth to 12th graders, our popular camp tradition is spearheaded by a team of BMPC staff and volunteer leaders at Camp Johnsonburg. The cost is \$500 per camper, with scholarships available. To register, contact JackLiskey@bmmpc.org.

Caring and Sharing

SUPPORT PRESBYTERIAN DISASTER EFFORTS IN UKRAINE. Presbyterian Disaster Assistance (PDA) is joining with reformed churches in Ukraine and adjacent regions to respond to the humanitarian crisis created by the war. PDA anticipates its response will include both financial and technical assistance as the network of faith communities providing humanitarian assistance continues to grow. If you wish to join our Peacemaking Committee in supporting the work of PDA in Ukraine, you may make a donation today by indicating "Ukraine Response" on the memo line of your check, or by giving online: <https://onrealm.org/bmmpc/give/disaster>.

Calendar

Sunday, May 15

8:00	a.m.	Childcare, Ed. Bldg., Rm. 102
8:30	a.m.	Faith Under 5 Sunday School, Virtual Sunday Morning Discussion Group, Virtual
9:00	a.m.	Sunday School for Grades 1 & 2, Virtual New Member Breakfast, Congregational Hall
10:00	a.m.	Worship with Sanctuary Choir, Sanctuary or Livestreamed Service on www.bmpc.org Ages 2-3, Ed. Bldg., Nursery PreK & K, Ed. Bldg., Rm. 201 Grades 1 & 2, Ed. Bldg., Lobby Grades 3 - 5, Ed. Bldg., Rm. 202 and Virtual Confirmation Class, Foerderer House, 2nd Floor Youth Gathering for Middle and High School, Gymnasium
11:00	a.m.	Atrium Cafe, Atrium Confirmation Expo, Gymnasium

Monday, May 16

No events scheduled.

Tuesday, May 17

8:30	a.m.	Tuesday Morning Study Group, Converse House Parlor
10:30	a.m.	Tai Chi, Gymnasium and Virtual
1:00	p.m.	Dance for Parkinson's Disease, Gymnasium
5:00	p.m.	Midweek Meet-Up, Virtual
7:00	p.m.	150th Vision Committee Open Forum, Virtual

Wednesday, May 18

9:00	a.m.	Yoga206 Bone Boost, Gymnasium
10:00	a.m.	Women's Coffee Cup Bible Study, Virtual
7:00	p.m.	Student Serve, Gymnasium
		Sacred Threads: The Beatitudes, Virtual
		Trustee Meeting, Virtual

Thursday, May 19

7:00	p.m.	Hunger Committee Meeting, Virtual
------	------	-----------------------------------

Friday, May 20

10:00	a.m.	Afghan Women's Circle, Children's Library
3:45	p.m.	Spanish School, Ed. Bldg.
6:00	p.m.	Holy Leisure, Virtual

Saturday, May 21

7:00	a.m.	Saturday Morning Men's Group, Converse House Parlor and Virtual
9:00	a.m.	Tenth Grade Bake for Philly, Main Kitchen
		Deacons' Retreat, Congregational Hall

Sunday, May 22

10:00	a.m.	Worship, Sanctuary or Livestreamed Service on www.bmpc.org The Rev. Dr. Agnes W. Norfleet will preach. Celebration of the Confirmation Class.
-------	------	--

Worship Staff

Agnes W. Norfleet, Pastor

Brian K. Ballard, Associate Pastor for Pastoral Care & Senior Adults

Leigh DeVries, Associate Pastor for Youth & Their Families

Rebecca Kirkpatrick, Associate Pastor for Adult Education & Mission

Rachel Pedersen, Associate Pastor for Children & Family Ministry

Franklyn C. Pottorff, Associate Pastor for Congregational Life & Stewardship

Jeffrey Brillhart, Director of Music & Fine Arts

Edward Landin Senn, Assistant Director of Music

Contact Information



Bryn Mawr Presbyterian Church
625 Montgomery Avenue, Bryn Mawr, PA 19010

610-525-2821 • www.bmpc.org

www.facebook.com/BrynMawrPres

www.instagram.com/BrynMawrPres

www.twitter.com/BrynMawrPres

www.youtube.com/user/brynmawrpres

24/7 Answering Service for Pastoral Emergencies: 610-525-2821

The Middleton Center: 610-525-0766 • info@middletoncenter.org

The Weekday School (Preschool): 610-525-2821, ext. 8840