

Bryn Mawr Presbyterian Church

Sunday, June 19, 2022 | 10:00 a.m., Sanctuary

Second Sunday after Pentecost



WELCOME

NEW HERE?

We are pleased that you are joining us as we worship God this morning. We invite you to introduce yourself to one of our pastors in the Atrium following the Worship Service. All of our programs, ministries, and opportunities for mission are open to everyone. Come join us!

COVID-19 GUIDELINES

Masks are optional inside church buildings, although masks may be required in some areas of the Education Building. Please maintain physical distance inside, and be mindful that we are an intergenerational community and while COVID vaccines are available for children ages five to 11, some children may not have been vaccinated.

LIVESTREAMED CHURCH SERVICES

In addition to in-person worship, the Sunday Worship Services are available to watch live at 10:00 a.m. on our livestreaming page: www.bmpc.org/livestream. For your convenience, the service also will be posted on our Worship Services page on Monday.

CHILDCARE AND SUNDAY SCHOOL

Childcare is available on Sundays from 8:00 a.m. to noon for children ages six months and older. See Sunday School class information on this page. Please contact Childcare Coordinator Rebecca Kellich at childcare@bmpc.org with any questions.

WEEKLY E-NEWSLETTER

Subscribe to our BMPC eNews by visiting our website: www.bmpc.org.

Today's Schedule

Childcare

8:30 a.m., Ed. Bldg., Rm. 102

10:00 a.m. Worship, Sanctuary

Worship Together Sunday

Grades 4 - 12, Sanctuary

Summer Sunday School

10:15 a.m., following the
Baptisms
Grades PreK to 3, Ed. Bldg.

Atrium Café

11:00 a.m.
Lemonade and Fellowship,
Atrium

Bryans – Tuten Art Exhibit

9:00 a.m. – noon
Fine Arts Gallery,
Ministries Center

GATHERING OF GOD'S PEOPLE

PRELUDE

Improvisation

Jeffrey Brillhart

WELCOME

Franklyn C. Pottorff

† CALL TO WORSHIP

One: One thing I asked of the Lord,
that I will seek after:

**All: To live in the house of the Lord
all the days of my life;**

One: To behold the beauty of the Lord,

All: and to inquire in God's temple.

One: God is good and greets us here in love and mercy.

All: God's peace and justice extend to all of humankind.

† HYMN 687

Our God, Our Help in Ages Past

ST. ANNE

CALL TO CONFESSION

AND PRAYER OF CONFESSION (in unison)

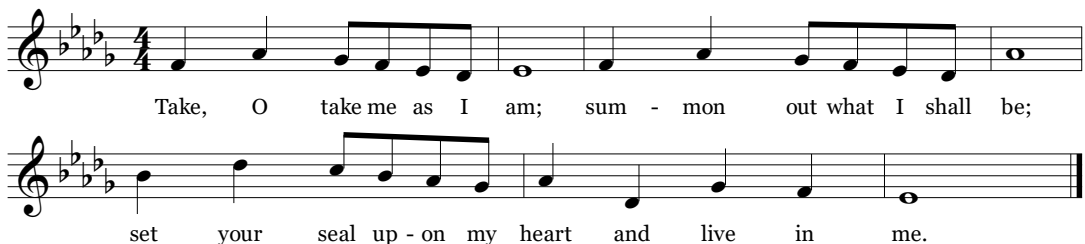
Merciful God, you have made us citizens of your realm,
but we confess that we have participate in causing hostility.
We see race, class and creed as things that divide us
rather than evidence of your creative goodness.
We have let our need to feel valued lead us
to deny your image in those who are different from us.
We have let our fear of risk curb our obligation
to love our neighbors as ourselves.
By the power of the Holy Spirit, forgive our waywardness
and transform our wills and actions so
that we may be the body of Christ for the world.

A moment of silence for personal reflection and confession.

ASSURANCE OF PARDON

SUNG RESPONSE

Take, O Take Me As I Am



† Please stand, if able.

PROCLAMATION OF THE WORD

THE SACRAMENT OF BAPTISM

Rachel Pedersen

One: Do we, as members of the church of Jesus Christ, promise to guide and nurture these children by word and deed, with love and prayer, encouraging them to know and follow Christ and to be faithful members of His church?

All: We do.

BAPTISM HYMN 188

Jesus Loves Me!

JESUS LOVES ME

Jesus loves me! This I know, for the Bible tells me so. Little ones to him belong. They are weak, but he is strong. Yes, Jesus loves me! Yes, Jesus loves me! Yes, Jesus loves me! The Bible tells me so.

PRAYER FOR ILLUMINATION

Franklyn C. Pottorff

FIRST LESSON Ephesians 4:25-5:2 (p. 194 in pew Bible)

SECOND LESSON Mark 7:24-37 (p. 42 in pew Bible)

Agnes W. Norfleet

One: The Word of the Lord.

All: Thanks be to God.

SERMON Boundless Grace for All of Humankind

Agnes W. Norfleet

† **HYMN 345** In an Age of Twisted Values

CHURCH UNITED

RESPONSE TO THE WORD

† **AFFIRMATION OF FAITH** (in unison)

Rachel Pedersen

We trust in God the Holy Spirit,
everywhere the giver and renewer of life.
The Spirit justifies us by grace through faith,
sets us free to accept ourselves and to love God and neighbor,
and binds us together with all believers
in the one body of Christ, the Church.
The same Spirit who inspired the prophets and apostles
rules our faith and life in Christ through Scripture,
engages us through the Word proclaimed,
claims us in the waters of baptism, feeds us with the bread of life and the
cup of salvation,
and calls women and men to all ministries of the church.

In a broken and fearful world the Spirit gives us courage
to pray without ceasing,
to witness among all peoples to Christ as Lord and Savior,
to unmask idolatries in Church and culture,
to hear the voices of peoples long silenced,
and to work with others for justice, freedom, and peace.

In gratitude to God, empowered by the Spirit,
we strive to serve Christ in our daily tasks and to live holy and joyful lives,
even as we watch for God's new heaven and new earth, praying, "Come, Lord
Jesus!"

~ Excerpt from a *Brief Statement of Faith*

PASTORAL PRAYER AND THE LORD'S PRAYER

Our Father who art in heaven, hallowed be thy name, thy kingdom come, thy will be done, on earth as it is in heaven. Give us this day our daily bread. And forgive us our trespasses, as we forgive those who trespass against us. And lead us not into temptation, but deliver us from evil. For thine is the kingdom, and the power, and the glory, forever. Amen.

INVITATION TO DISCIPLESHIP

OFFERTORY ANTHEM There's a Wideness in God's Mercy DON MICHAEL DICIE

Sanctuary Choir

There's a wideness in God's mercy, Like the wideness of the sea; There's a kindness in His justice, Which is more than liberty. There is welcome for the sinner, And more graces for the good; There is mercy with the Savior; There is healing in His blood. There is no place where earth's sorrows, Are more felt than up in Heaven; There is no place where earth's failings, Have such kindly judgment given. There is plentiful redemption, In the blood that has been shed; There is joy for all the members, In the sorrows of the Lord. For the love of God is broader, Than the measure of our mind; And the heart of the Eternal, Is most wonderfully kind. If our love were but more simple, We should take Him at His word; And our lives would be all sunshine, In the sweetness of our Lord.

*Please fill in the Friendship Pad at the end of your pew;
pass it down your row and back again.*

† **DOXOLOGY 609** Praise God, from Whom All Blessings Flow **LASST UNS ERFREUEN**

Praise God, from whom all bless-ings flow. Praise God, all crea-tures high and low. Al - le - lu - ia, al - le - lu - ia! Praise God, in Je - sus ful - ly known: Cre - a - tor, Word, and Spir - it one. Al - le - lu - ia, al - le - lu - ia, al - le - lu - ia, al - le - lu - ia!

† **PRAYER OF DEDICATION**

Rachel Pedersen

† **HYMN 372**

O For a World

AZMON

† **BENEDICTION AND CHORAL RESPONSE**

Agnes W. Norfleet

POSTLUDE

Improvisation

Jeffrey Brillhart

†

“I am the resurrection and the life.”

Barbara Pfefferkorn ~ June 11, 2022

John Grandbois ~ June 12, 2022

WORSHIP NOTES

RECEIVING THE SACRAMENT OF BAPTISM

Florence Elizabeth Ballard
Daughter of Brian & Amy Ballard

Edie Paige Pickens
Daughter of Cait & Andy Pickens

SANCTUARY FLOWERS

Given to the glory of God and in honor
of the anniversary of H. Eugene and Jean B. Fisk

NARTHEX FLOWERS

Given to the glory of God and in honor of the baptism
of Florence Elizabeth Ballard

PLAYING THE CARILLON

Rob Mygatt

BULLETIN COVER

Photo by Dave Tavani

RESPONSE & DOXOLOGY

Text and Music: John L. Bell, 1995. Text and Music: ©1995 WGRG, Iona Community (admin. GIA Publications, Inc.) Reprinted and streamed with permission under ONE LICENSE #A-716211. All rights reserved.

Text: Brian Wren, 1989. Music: Geistliche Kirchengesäng, 1623; harm. Hal H. Hopson, 1998. Text: ©1989 Hope Publishing Company. Music Harm: ©1998 Hope Publishing Company. Reprinted and streamed with permission under ONE LICENSE #A-716211. All rights reserved.

Announcements

OFFICE SUITE UPDATES. During July and August the staff office suite in the Ministries Center will be painted, and new carpet and lighting will be installed. Beginning on Mon., June 20, storage containers will be placed in the Radnor Street Parking Lot which will limit how many parking spaces are available. It is recommended that you park in the Sanctuary Parking Lot and enter through the Atrium. Our Reception Team will be stationed in the Atrium during this renovation project. Staff will begin moving to other offices on campus on Mon., June 27. Although our staff will remain on campus, please call the church office at 610-525-2821 before stopping by to meet with someone. For more information, contact LizEllis@bmpc.org.

SANCTUARY FLOWER DONATIONS. An opening is available on July 3 for a donor who wishes to give flowers in memory of or in honor of loved ones. Later, our Deacons deliver small arrangements of the Sanctuary flowers to homebound members. If you would like to donate flowers for a Sunday Worship Service, contact Natalie Hoepp at bmpcflowers@gmail.com.

Today

SUMMER CHOIR. Beginning today, 9:00 a.m., Sanctuary Choir Loft. Each summer, from mid-June through the beginning of September, all singers ages 12+ are invited to come to church any Sunday at 9:00 a.m. for a short rehearsal in the choir loft, then stay and sing for the 10:00 a.m. Worship Service. Summer choir is simple (one anthem, hymns, and a closing response), and informal (no robes). No long-term commitment; no need to sign up in advance.

This Week

VOLUNTEER WITH VACATION BIBLE CAMP 2022. Mon., June 20 - Fri., June 24. VBC is held from 9:00 a.m. - 12:00 p.m., for ages three years to fifth grade. Volunteers of all ages are invited to sign up to help make this a special week for the children of our church and community. Register as a volunteer online: <https://bit.ly/vbc-volunteer>. MaryRichards@bmpc.org.

Upcoming

YOGA206 BONE BOOST SUMMER SESSION. Wednesdays, June 29-Aug. 31, 10:00 a.m., Gymnasium (no class on July 20, July 27, Aug. 3). Class packages: three classes for \$39; four classes for \$52, or seven classes for \$91. Packages must be used by Sept. 5, and they are not reimbursable. COVID-19 vaccination required. To sign up or for more information, contact instructor Abby Contract at YOGA206@icloud.com.

PHILLY IMMERSION TRIP. July 10-15. Rising ninth to 12th graders are invited to join us on our Philadelphia Immersion Trip. We will be serving with The Common Place, a non-profit organization that assists children and families in Southwest Philadelphia through educational programs, social services, and collaboration with other groups. The trip costs \$500 per student, with scholarships available. To register, contact JackLiskey@bmmpc.org.

YOUTH CAMP. July 31-Aug. 5. For rising sixth to 12th graders, our popular camp tradition is spearheaded by a team of BMPC staff and volunteer leaders at Camp Johnsonburg. The cost is \$500 per camper, with scholarships available. To register, contact JackLiskey@bmmpc.org.

Caring and Sharing

HOUSE RENTAL FOR SEPAH FAMILY. The Sepahs, BMPC's refugee family, will be moving out of Foerderer House in July/August as Foerderer transitions back to its mission of serving senior adults. With housing in limited supply and continuing high demand, their housing search has been challenging. The Sepahs would like a house with three bedrooms, a backyard, and a neighborhood with children, either in Lower Merion Township or Radnor Township. They can afford \$2,500 to \$2,900 in monthly rent. If you know of any possibilities, please contact Barbara Morse at barbarawmorse@gmail.com or via phone: 610-574-9615.

LIBRARY VOLUNTEERS NEEDED. Come help organize and catalogue books for the Converse Library! We currently need volunteers to help with general library tasks such as cataloging and shelving books. We are seeking volunteers who have a few hours available during the week to help with organizing the Converse Library. If you are interested, contact AliciaFranklin@bmmpc.org.

Do Justice, Love Mercy

In light of recent events, here are ways for you to engage in the work of justice and peace:

LETTER WRITING CAMPAIGN. Through Sun., June 26, Ministries Center Court. Looking for a way to take action against gun violence? A letter writing station is set up in the Ministries Center Court where you may write and sign a letter to state legislators and congressional representatives of Montgomery, Delaware and Chester Counties, urging them to take action on current gun-related bills. For more information, contact AliciaFranklin@bmpc.org.

HEEDING GOD'S CALL. As one of our Peacemaking Committee's partners, Heeding God's Call is a faith-based movement and organization to prevent gun violence. Their goals focus on taking specific actions such as educating the public about illegal gun trafficking, persuading gun retailers to refrain from selling guns to those who may resell them on the criminal market, and uniting and motivating people and communities of faith to become activists against gun violence. To become involved with our Peacemaking Committee or to learn more about Heeding God's Call, contact AliciaFranklin@bmpc.org.

Calendar

Sunday, June 19

| | | | |
|-------|------|---|----------------------|
| 8:30 | a.m. | Childcare | Ed. Bldg., Rm. 102 |
| 9:00 | a.m. | Summer Choir rehearsal | Sanctuary Choir Loft |
| | | Atrium Cafe | Atrium |
| 10:00 | a.m. | Grades 4-12 Worship Together with their Families, Worship with Baptisms and Summer Choir, Sanctuary or Livestreamed Service on www.bmpc.org | Sanctuary |
| 10:15 | a.m. | Summer Sunday School Pre-K - Rising 3rd Graders | |
| | | Ed. Bldg., Rm. 102 | |
| 4:00 | p.m. | Vacation Bible Camp Kickoff | Congregational Hall |

Monday, June 20

| | | | |
|------|------|---------------------|-------------|
| 9:00 | a.m. | Vacation Bible Camp | BMPC Campus |
|------|------|---------------------|-------------|

Tuesday, June 21

| | | | |
|------|------|-----------------------------|-----------------------------------|
| 8:30 | a.m. | Tuesday Morning Study Group | Converse House Parlor and Library |
|------|------|-----------------------------|-----------------------------------|

| | | | |
|------|------|---------------------|-------------|
| 9:00 | a.m. | Vacation Bible Camp | BMPC Campus |
|------|------|---------------------|-------------|

Wednesday, June 22

| | | | |
|------|------|---------------------|-------------|
| 9:00 | a.m. | Vacation Bible Camp | BMPC Campus |
|------|------|---------------------|-------------|

| | | | |
|-------|------|--------------------------|---------------------|
| 12:00 | p.m. | Urban Suburban Book Club | MLADC Outdoor Patio |
|-------|------|--------------------------|---------------------|

Thursday, June 23

| | | | |
|------|------|---------------------|-------------|
| 9:00 | a.m. | Vacation Bible Camp | BMPC Campus |
|------|------|---------------------|-------------|

Friday, June 24

| | | | |
|------|------|---------------------|-------------|
| 9:00 | a.m. | Vacation Bible Camp | BMPC Campus |
|------|------|---------------------|-------------|

| | | | |
|-------|------|-----------------------------------|--------------------|
| 10:00 | a.m. | Afghan Women's Circle (in-person) | Children's Library |
|-------|------|-----------------------------------|--------------------|

| | | | |
|------|------|--------------------|---------------------|
| 1:00 | p.m. | Johnsonburg Plunge | Event is Off Campus |
|------|------|--------------------|---------------------|

Saturday, June 25

| | | | |
|--|--|--------------------|---------------------|
| | | Johnsonburg Plunge | Event is Off Campus |
|--|--|--------------------|---------------------|

| | | | |
|------|------|------------------------------|-----------------------|
| 7:00 | a.m. | Saturday Morning Men's Group | Converse House Parlor |
|------|------|------------------------------|-----------------------|

| | | | |
|-------|------|--|---------|
| 10:00 | a.m. | Searching for Still Waters Bereavement Group | Virtual |
|-------|------|--|---------|

Sunday, June 26

| | | | |
|-------|------|--|--|
| 10:00 | a.m. | Worship, Sanctuary or Livestreamed Service on www.bmpc.org The Rev. Dr. Agnes W. Norfleet will preach. | |
|-------|------|--|--|

Worship Staff

Agnes W. Norfleet, Pastor

Brian K. Ballard, Associate Pastor for Pastoral Care & Senior Adults

Leigh DeVries, Associate Pastor for Youth & Their Families

Rebecca Kirkpatrick, Associate Pastor for Adult Education & Mission

Rachel Pedersen, Associate Pastor for Children & Family Ministry

Franklyn C. Pottorff, Associate Pastor for Congregational Life & Stewardship

Jeffrey Brillhart, Director of Music & Fine Arts

Edward Landin Senn, Assistant Director of Music

Contact Information



Bryn Mawr Presbyterian Church
625 Montgomery Avenue, Bryn Mawr, PA 19010

610-525-2821 • www.bmpc.org

www.facebook.com/BrynMawrPres

www.instagram.com/BrynMawrPres

www.twitter.com/BrynMawrPres

www.youtube.com/user/brynmawrpres

24/7 Answering Service for Pastoral Emergencies: 610-525-2821

The Middleton Center: 610-525-0766 • info@middletoncenter.org

The Weekday School (Preschool): 610-525-2821, ext. 8840