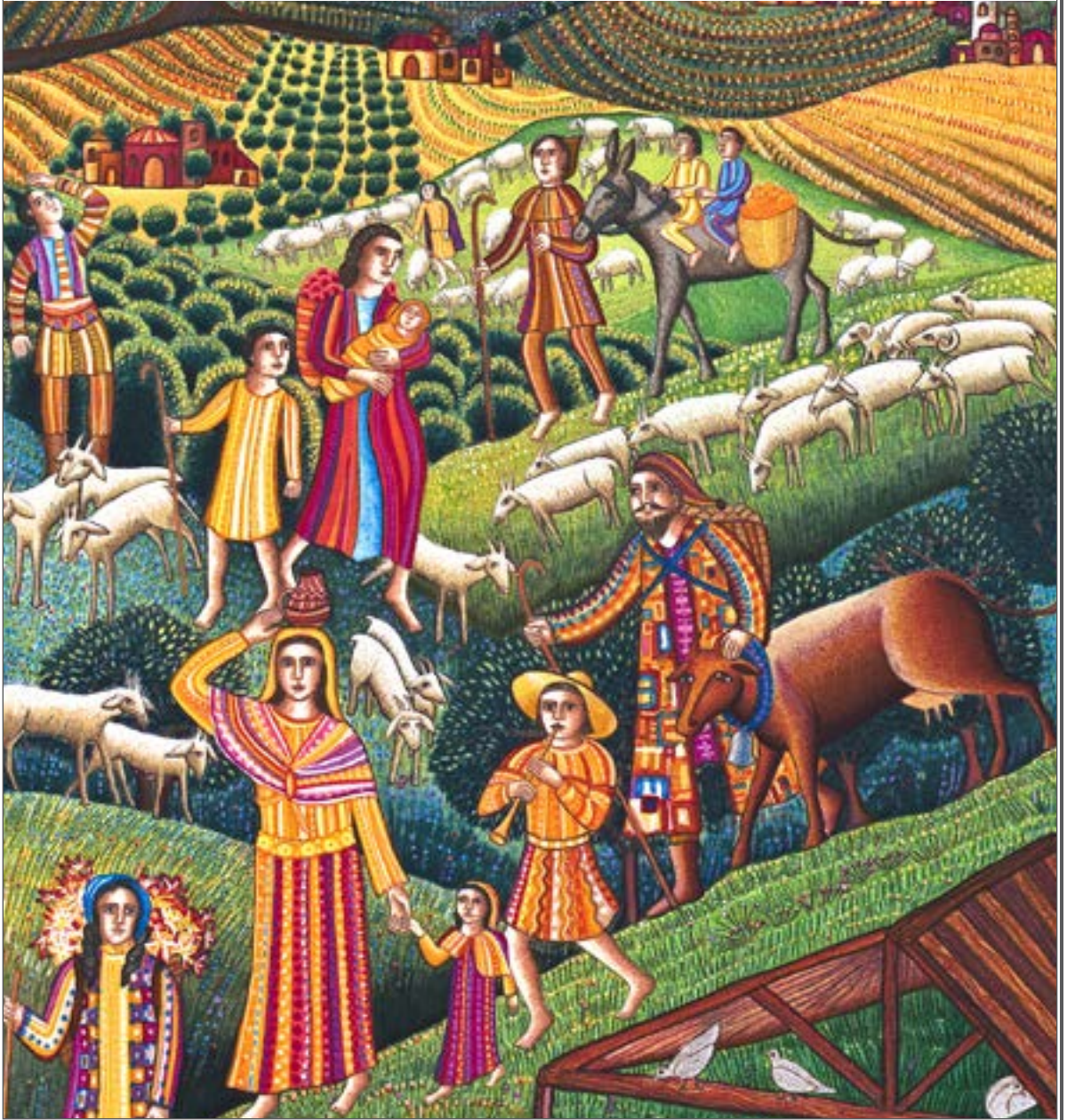


Bryn Mawr Presbyterian Church

Sunday, December 10, 2023 | 8:00 a.m., Chapel

Second Sunday of Advent



WELCOME

NEW HERE?

We are pleased that you are joining us as we worship God this morning. We invite you to introduce yourself to one of our pastors following the Worship Service. All of our programs, ministries, and opportunities for mission are open to everyone. Come join us!

LIVESTREAMED CHURCH SERVICES

In addition to in-person worship, the 10:00 a.m. Sunday Worship Service is available to watch on our livestreaming page:

www.bmpc.org/livestream For your convenience, the service also will be posted on our Worship Services page on Monday.

CHILDCARE AND SUNDAY SCHOOL

Childcare is available on Sundays from 7:45 a.m. to 12:30 p.m. for children ages six months and older. See Sunday School class information on this page. Please contact Pastor Rachel, RachelPedersen@bmpc.org or Childcare Coordinator Erika Henry at childcare@bmpc.org with any questions.

WEEKLY E-NEWSLETTER

Subscribe to our BMPC eNews by visiting our website: www.bmpc.org

Today's Schedule

Childcare (infant - age 5)

7:45 a.m. – 12:30 p.m.

Ed. Bldg., Rm. 101

Worship with Sanctuary Choir

10:00 a.m., Sanctuary

Sunday School Classes

Age 2 - PreK

10:00 a.m., Ed. Bldg.

Grades K - 5

10:00 a.m., Worship in Sanctuary

10:15 a.m., Ed. Bldg.

Youth Gathering

10:00 a.m., Sanctuary

Atrium Café

11:00 a.m., Atrium

BMPC Members Art Exhibit

9:00 a.m. to 12:00 p.m.,

Art Gallery, Ministries Center

Stories of a Young Jesus

11:15 a.m., Fullerton Room

Advent Lessons & Carols

Vespers Service

4:00 p.m., Sanctuary

GATHERING AROUND THE WORD

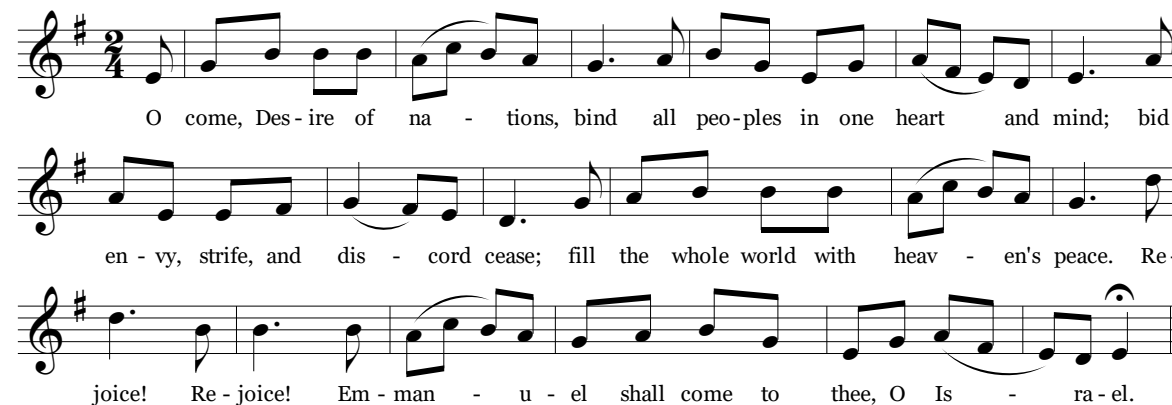
PRELUDE

WELCOME

Rebecca Kirkpatrick

ADVENT INTROIT

VENI EMMANUEL



O come, Des-ire of na - tions, bind all peo-ples in one heart and mind; bid en - vy, strife, and dis - cord cease; fill the whole world with heav - en's peace. Re-joice! Re - joice! Em - man - u - el shall come to thee, O Is - ra - el.

CALL TO WORSHIP &

Rob Stoy

LIGHTING OF THE ADVENT WREATH

Leader: "In the wilderness prepare the way of the Lord,

People: Make straight in the desert a highway for our God."

Leader: Fulfilling the prophecy of Isaiah, John the Baptist was sent by God

People: To prepare us for the coming of Jesus.

Leader: John prepares us to turn toward Christ, saying:

People: "The one who is more powerful than I is coming after me."

Leader: May this small, but abiding, flame of peace

People: Give light to the world.

Leader: Lead us, O God, to prepare the way for you to come,

People: And fill the whole world with heaven's peace.

† HYMN 106

Prepare the Way, O Zion

BEREDEN VÄG FÖR HERRAN

**CALL TO CONFESSION
AND PRAYER OF CONFESSION** *(in unison)*

God of righteousness and justice, forgive us for the clutter of our lives that keeps us from preparing a way for you.
We are richly blessed, but turn our eyes from the needs of those around us, particularly the oppressed, the poor, the unsheltered and the displaced.
Help us to repent and turn from greed, violence, and systems that oppress; to turn toward acts that bear fruit worthy of your reign of peace, inspiring ourselves and those around us to prepare the way for your coming.

A moment of silence for personal reflection and confession.

ASSURANCE OF PARDON

SUNG RESPONSE

Lift Up Your Heads

PUER NOBIS

Musical notation for the sung response. It consists of two staves of music in G major (one sharp) and 3/4 time. The melody is simple and hymn-like. The lyrics are: Lift up your heads, ye might - y gates; be - hold the King of glo - ry waits; the King of kings is draw - ing near; the Sav - ior of the world is here.

HEARING THE WORD

PRAYER FOR ILLUMINATION

Rob Stoy

FIRST LESSON

Isaiah 40:1-11 *(pg. 667 in pew Bible)*

SECOND LESSON

Mark 1:1-8 *(pg. 34 in pew Bible)*

Agnes W. Norfleet

One: The Word of the Lord.

All: **Thanks be to God.**

SERMON

Prepare The Way!

Agnes W. Norfleet

Second in series, Advent's Action Plan

RESPONSE TO THE WORD

THE SACRAMENT OF THE LORD'S SUPPER

Rebecca Kirkpatrick

You are invited to come forward, using the center aisle, to partake of the Lord's Supper by intinction (dipping a piece of bread into the cup); return to your seat using the side aisle.

Gluten- and casein-free elements are on the center table.

You are invited to bring your offering when you come forward.

THE INVITATION TO COMMUNION

THE GREAT THANKSGIVING

One: The Lord be with you.

All: **And also with you.**

One: Lift up your hearts.

All: **We lift them to the Lord.**

One: Let us give thanks to the Lord our God.

All: **It is right to give our thanks and praise.**

THE LORD'S PRAYER

Our Father who art in heaven, hallowed be thy name, thy kingdom come, thy will be done, on earth as it is in heaven. Give us this day our daily bread. And forgive us our trespasses, as we forgive those who trespass against us. And lead us not into temptation, but deliver us from evil. For thine is the kingdom, and the power, and the glory, forever.
Amen.

COMMUNION OF THE PEOPLE

PRAYER OF DEDICATION

Agnes W. Norfleet

† HYMN 96 On Jordan's Bank the Baptist's Cry

WINCHESTER NEW

† **SENDING AND PASSING OF THE PEACE**

One: The peace of Christ be with you.

All: **And also with you.**

WORSHIP NOTES

ASSISTING WITH COMMUNION

Rob Stoy, Deacon

USHERING

Tom Willcox

BULLETIN COVER

John August Swanson | Nativity Detail

Christmas Eve Services

CHRISTMAS EVE FAMILY SERVICE. 4:30 p.m., Sanctuary and Livestreamed. Family Service with Nativity Tableau and musical leadership by BMPC's Children's Choir, Youth Chorale and the Bryn Mawr Festival Brass. Prelude begins at 4:15 p.m. Infant and toddler childcare available without reservations from 3:45-5:45 p.m. in the Education Building, Room 101.

CHRISTMAS EVE WORSHIP WITH COMMUNION. 8:30 p.m., Sanctuary and Livestreamed. The Rev. Dr. Agnes W. Norfleet will preach. Prelude begins at 8:10 p.m.

Announcements

ADVENT STORY PATH LABYRINTH. Walking a labyrinth during Advent provides a meaningful way to journey to Bethlehem. The small labyrinth is open daily during Advent, Monday through Friday, 9:00 a.m. - 6:00 p.m. in the Chapel.

CODE BLUE SHELTER VOLUNTEERS NEEDED. For the month of January, BMPC will host a Code Blue shelter to house up to 5 men sleeping outside in Lower Merion. If you would like more details about the volunteer expectations and to sign up, please contact RebeccaKirkpatrick@bmpc.org

BMPC MEMBERS ART EXHIBIT. Ministries Center Art Gallery. Come and view the artistry of our BMPC members! This exhibit features works in paint and ceramics. Some of the pieces are for sale and would make excellent Christmas gifts! The gallery is open on Sundays from 9:00 a.m. to noon, and Monday through Friday from 10:00 a.m. to 4:00 p.m. The exhibit runs through Sun., Dec. 17, 2023. To purchase any of the works, please contact mfa@bmpc.org.

ADVENT GIFT MARKET. 11:00 a.m., Atrium. AGM representatives will be in the Atrium after worship to process orders. Online orders also may be placed via the AGM website: www.brynmawragm.com

Today

STORIES OF A YOUNG JESUS: AN ADVENT BIBLE STUDY. Today, 11:15 a.m., Fullerton Room, Ministries Center. There are a variety of stories surrounding the earliest years of Jesus of Nazareth's life. In this Advent season, we will explore these traditions, what they teach us about the earliest understandings of who Jesus was and would become, and how they inform or challenge our faith today. The Rev. Rebecca Kirkpatrick and Dr. Joshua Yoder will teach this class together. For more information, contact RebeccaKirkpatrick@bmpc.org

ADVENT LESSONS & CAROLS VESPERS SERVICE. Today, 4:00 p.m., Sanctuary. Advent, a time of hope and expectations as Christians all around the world anticipate the birth of the Christ Child. Led by BMPC's Sanctuary Choir, as well as the Singing for Life and Youth Chorale ensembles, scripture readings, carols and anthems will surely draw you into the season. A free-will offering will be taken in support of Prevention Point Philadelphia – www.ppponline.org

This Week

ADVENT HARPSICHORD RECITALS. Tuesdays, Dec. 12 and 19, noon, Sanctuary. Featuring Silvanio Reis, Edward Landin Senn, and Jeffrey Brillhart, performing free 30-minute recitals on BMPC's William Dowd harpsichord.

QUIET PRAYER IN ADVENT. Wed., Dec. 13, 7:00 - 7:45 p.m., Witherspoon Parlor. Amidst the busyness of the Advent season, this is a time for contemplative guided prayer which will include Scripture readings, space for reflection, and a time of communal silence. Caring Ministry team members and Deacons will lead these sessions. A hybrid option will be available, please register with KikiMcKendrick@bmpc.org.

ANY OF THOSE DECEMBERS. Sat., Dec. 16, 3:00 p.m., Sanctuary. Lyric Fest of Philadelphia presents a winter cantata featuring poems of Jeanne Minahan and music by composer Benjamin Perry Wenzelberg. Performances by soprano Rebecca Meyers, mezzo soprano Devony Smith, tenor Steven Ng, baritone Steven Eddy, the Daedalus Quartet, Ray Furuta on flute, and Laura Ward on piano. Tickets are \$30.00. BMPC members can purchase \$20.00 discounted tickets through this link on the Lyric Fest website – <https://lyricfest.org/tickets/> - Follow this link and select BMPC performance. Then use coupon code: BMPCLyric

CASSEROLE BLITZ. Sat., Dec. 16, 8:30 a.m., Ministries Center Kitchen. Join us to make casseroles and friends at the Hunger Committee's Casserole Blitz! Enjoy this family activity (children over age 5) as you get to know BMPC folks you haven't met before and support a good cause while working with others to prepare casseroles for area shelters. Upcoming Dates: Jan. 20, Feb. 17. Please use our RSVP link to sign up: <https://bit.ly/Blitz-RSVP>

Next Sunday

RAINBOW REINDEER GAMES. Sun., Dec. 17, 11:00 a.m., Gymnasium. All youth (grades 6-12) and fifth graders are invited to join in the fun, games, and color powder shenanigans we have planned for our Rainbow Reindeer Games this year! To register, visit <https://bit.ly/RRgames2023>

Upcoming

WEE CHRISTMAS. Tues., Dec. 19, 4:00 p.m., Sanctuary. Designed for children ages 2 - 5 years and their families, this special retelling of the Christmas Story allows our youngest members to hear and participate in the story of Jesus' birth. Helpers are welcome! MaryRichards@bmpc.org.

LONGEST NIGHT SERVICE. Wed., Dec. 20, 7:00 p.m., Sanctuary and via livestream. This contemplative worship service is for anyone yearning for comfort amid personal grief and hope for a more peaceful world. A meditation by the Rev. Dr. Kirby Lawrence Hill will be accompanied by prayer, the singing of carols and lighting candles to lead us through darkness toward healing and wholeness. A labyrinth on the Education Building Lawn invites walkers following the service, weather permitting.

YOUTH INTERNATIONAL MISSION TRIP APPLICATION DEADLINE.

Mon, Jan. 1, 5:00 p.m. Rising 9-12th graders (current 8-11th graders) are welcome to apply for a spot on the international mission trip to Peru, July 10th-20th, 2024. Applicants will be notified by February 1st at 5:00 p.m. if they have been accepted. The application can be found on Realm, the youth ENews, or by emailing Pastor Leigh Devries at ldevries@bmpc.org

Calendar

Sunday, December 10

- 7:45 a.m. Childcare (Birth-Kindergarten), Ed. Bldg., Rm. 101
8:00 a.m. **Worship with Communion, Chapel**
8:30 a.m. Sunday Morning Discussion Group, Cannon Room
8:45 a.m. Art @ 9, Ed. Bldg., Rm. 102
Filling the Well, Children's Library, Ed. Bldg.
9:55 a.m. Sunday School Ages 2s, 3s, and Pre-K, Ed. Bldg.
10:00 a.m. **Worship with Sanctuary Choir, Sanctuary
and Livestreamed Service on www.bmpc.org**
Youth Gathering, Gymnasium
10:15 a.m. Sunday School K-5th Grade, Ed. Bldg.
11:00 a.m. Family Fellowship, Ed. Bldg.
Atrium Cafe, Atrium
11:15 a.m. Stories of a Young Jesus, Fullerton Room
4:00 p.m. Advent Lessons & Carols Vespers Services, Sanctuary

Monday, December 11

- 6:00 p.m. Middle School Mondays, Gymnasium

Tuesday, December 12

- 9:00 a.m. Repose Yoga, (Hybrid), Gymnasium
10:30 a.m. Tai Chi (Hybrid), Gymnasium
12:00 p.m. Advent Harpsichord Recital, Sanctuary
1:00 p.m. Dance for Parkinson's Class, Gymnasium
6:45 p.m. BMPC Tutoring Program, Ed. Bldg.
7:00 p.m. Session Meeting, Fullerton Room

Wednesday, December 13

- 9:30 a.m. Yoga206 Bone Boost Class, Gymnasium
10:00 a.m. Coffee Cup Bible Study (Hybrid), Cannon Room
Men's Study Group, Converse House Parlor
4:45 p.m. Wednesdays Together, Ed. Bldg
5:30 p.m. Wednesday Night Dinner, Congregational Hall
5:45 p.m. Youth Chorale, Fine Arts Center
7:00 p.m. High School Student Serve, Gymnasium
Quiet Prayer in Advent (Hybrid), Witherspoon Parlor
Trustees' Meeting, Fullerton Room

Thursday, December 14

- 11:00 a.m. Artist's Gathering, Fine Arts Kitchen
7:00 p.m. Sanctuary Choir Rehearsal, Fine Arts Center

Friday, December 15

No Events Scheduled.

Saturday, December 16

- 7:00 a.m. Saturday Morning Men's Group, Converse House Parlor
8:30 a.m. Casserole Blitz, Congregational Hall
11:00 a.m. **James Crutchfield Jr. Memorial Service, Chapel**
3:00 p.m. Lyric Fest of Philadelphia Concert, Sanctuary

Sunday, December 17

- 8:00 a.m. **Worship with Communion, Chapel**
10:00 a.m. **Sunday Worship with Sanctuary Choir
Sanctuary and Livestreamed Service on www.bmpc.org**
The Rev. Dr. Agnes Norfleet will preach.

Worship Staff

Agnes W. Norfleet, Pastor

Leigh DeVries, Associate Pastor for Youth & Their Families

Rebecca Kirkpatrick, Associate Pastor for Adult Education & Mission

Kirby Lawrence Hill, Interim Associate Pastor for Pastoral Care & Senior Adults

Rachel Pedersen, Associate Pastor for Children & Family Ministry

Franklyn C. Pottorff, Associate Pastor for Congregational Life & Stewardship

Jeffrey Brillhart, Director of Music & Fine Arts

Edward Landin Senn, Assistant Director of Music



Contact Information

Bryn Mawr Presbyterian Church
625 Montgomery Avenue, Bryn Mawr, PA 19010

610-525-2821 • www.bmpc.org

www.facebook.com/BrynMawrPres

www.instagram.com/BrynMawrPres

www.twitter.com/BrynMawrPres

www.youtube.com/user/brynmawrpres

24/7 Answering Service for Pastoral Emergencies:
610-525-2821

The Middleton Center: 610-525-0766 •
info@middletoncenter.org

The Weekday School (Preschool): 610-525-2821, ext. 8840