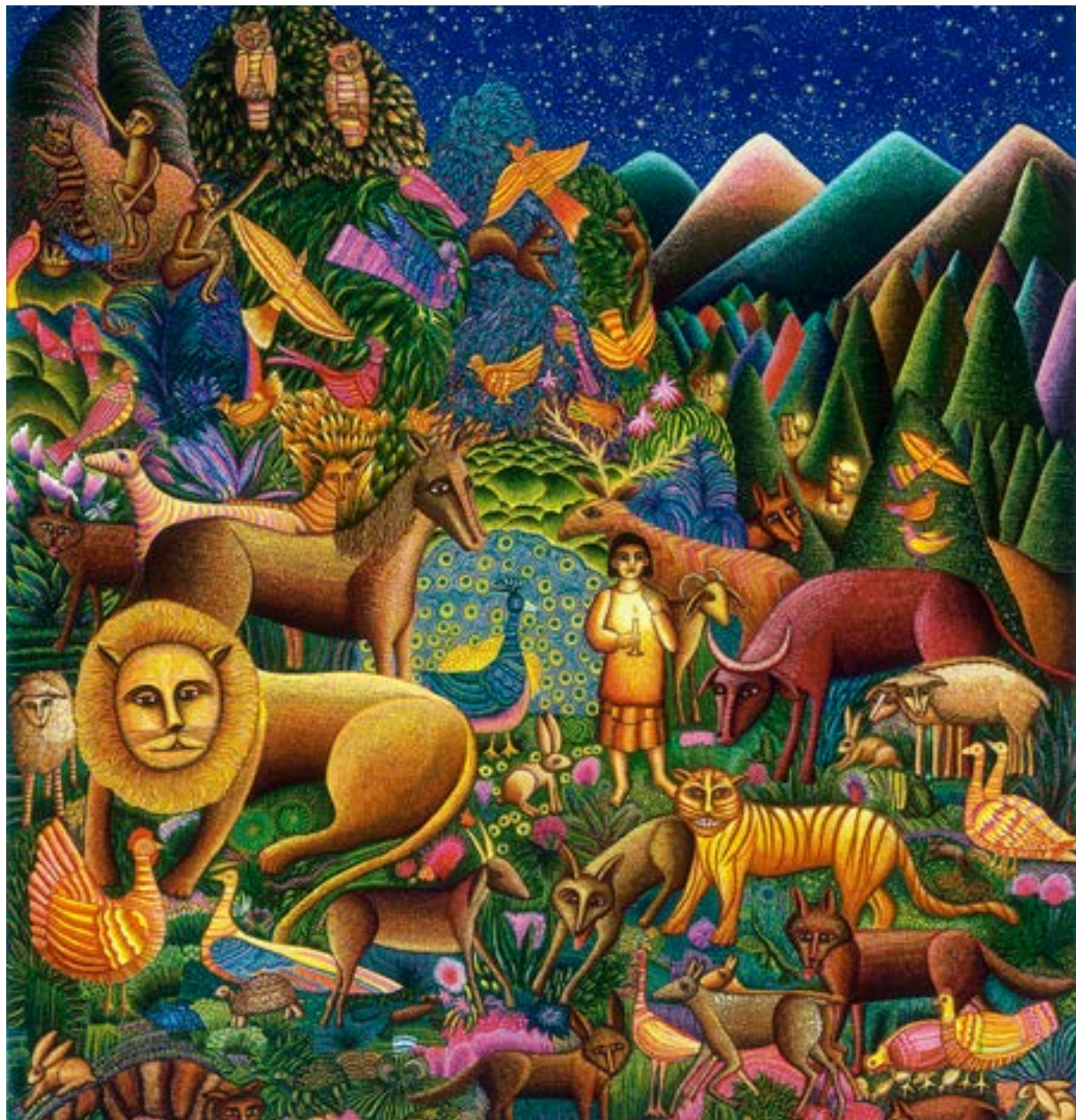


Bryn Mawr Presbyterian Church

Sunday, June 2, 2024 | 8:00 a.m., Chapel

Second Sunday after Pentecost



WELCOME

NEW HERE?

We are pleased that you are joining us as we worship God this morning. We invite you to introduce yourself to one of our pastors in the Atrium following the worship service. All of our programs, ministries and opportunities for mission are open to everyone. Come join us!

LIVESTREAMED CHURCH SERVICES

In addition to in-person worship, the Sunday worship services are available to watch live at 10:00 a.m. on our livestreaming page: www.bmpc.org/livestream. For your convenience, the service also will be posted on our Worship Services page on Monday.

CHILDCARE AND SUNDAY SCHOOL

Childcare is available on Sundays from 7:45 a.m. to 12:30 p.m. for children ages six months and older. See Sunday School class information on this page. Please contact the Rev. Rachel Pedersen, RachelPedersen@bmpc.org or Childcare Coordinator Erika Henry, childcare@bmpc.org with any questions.

WEEKLY E-NEWSLETTER

Subscribe to our BMPC eNews by visiting our website: www.bmpc.org.

Today's Schedule

Childcare (infant - age 5)

7:45 a.m. – 11:15 a.m.

Ed. Bldg., Rm. 101

Worship with Communion

8:00 a.m., Chapel

“Seeking Freedom” Exhibit

9:00 a.m. to 12:00 p.m., Gallery

Worship with Sanctuary Choir

10:00 a.m., Sanctuary

Worship Together Sunday

Grades K - 12

10:00 a.m., Sanctuary

Atrium Cafe

11:00 a.m., Atrium

GATHERING OF GOD'S PEOPLE

PRELUDE

WELCOME

Kirby Lawrence Hill

† CALL TO WORSHIP

One: Bless the Lord, O my soul,

You are clothed with honor and majesty,

All: By the streams the birds of the air have their habitation; they sing among the branches.

One: From your lofty abode you water the mountains;
the earth is satisfied with the fruit of your work.

**All: Bless the Lord, O my soul,
and all that is within me, bless God's holy name.**

† HYMN 32

I Sing the Mighty Power of God

ELLACOMBE

CALL TO CONFESSION

AND PRAYER OF CONFESSION (in unison)

God of hosts, you have created us in goodness
and given us a job to do to care for your creation.

We have turned away from you,
neglecting the welfare of the Earth,
ignoring the plight of your people,
taking from the life you create what we cannot give back.
Forgive us, and lead us to a more gracious life.

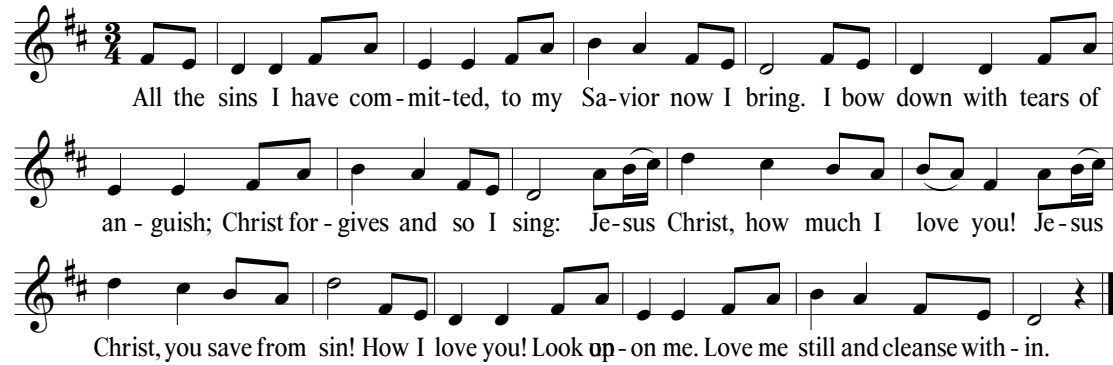
In your compassion, Creator God, turn us to your way,
and restore us to our primary vocation to steward your creation.

A moment of silence for personal reflection and confession.

ASSURANCE OF PARDON

SUNG RESPONSE

NETTLETON



All the sins I have com-mit-ted, to my Sa-rior now I bring. I bow down with tears of
an - guish; Christ for - gives and so I sing: Je-sus Christ, how much I love you! Je-sus
Christ, you save from sin! How I love you! Look up - on me. Love me still and cleanse with - in.

HEARING OF THE WORD

PRAYER FOR ILLUMINATION

Judy Frazier

FIRST LESSON Psalm 8 (pg. 492 in pew Bible)

SECOND LESSON Genesis 1:1-5, 20-31 (pg. 1 in pew Bible)

Agnes W. Norfleet

One: The Word of the Lord.

All: **Thanks be to God.**

SERMON

Created in the Image of God
All Creatures Great & Small Summer Series

Agnes W. Norfleet

RESPONSE TO THE WORD

THE SACRAMENT OF THE LORD'S SUPPER

Kirby Lawrence Hill

You are invited to come forward, using the center aisle, to partake of the Lord's Supper by intinction (dipping a piece of bread into the cup); return to your seat using the side aisle.

Gluten- and casein-free elements are on the center table.

You are invited to bring your offering when you come forward.

THE INVITATION TO COMMUNION

THE GREAT THANKSGIVING

One: The Lord be with you.

All: **And also with you.**

One: Lift up your hearts.

All: **We lift them to the Lord.**

One: Let us give thanks to the Lord our God.

All: **It is right to give our thanks and praise.**

THE LORD'S PRAYER

Our Father who art in heaven, hallowed be thy name, thy kingdom come, thy will be done, on earth as it is in heaven. Give us this day our daily bread. And forgive us our trespasses, as we forgive those who trespass against us. And lead us not into temptation, but deliver us from evil. For thine is the kingdom, and the power, and the glory, forever.
Amen.

COMMUNION OF THE PEOPLE

PRAYER OF DEDICATION

Agnes W. Norfleet

† **HYMN 36** For the Fruit of All Creation

AR HYD Y NOS

† SENDING AND PASSING OF THE PEACE

One: The peace of Christ be with you.

All: **And also with you.**

POSTLUDE

WORSHIP NOTES

BULLETIN COVER IMAGE

Peaceable Kingdom © 2016 John August Swanson | Eyekons
Used with permission.

ASSISTING WITH COMMUNION

Judy Frazier, Deacon

USHER

Keith Brinks

New Announcements

SUSTAINING DEMOCRACY: WHAT WE OWE THE OTHER SIDE. We look forward to welcoming Dr. Robert Talise as our fall Community Forum speaker on Mon., Sept. 30. Copies of his most recent book, *Sustaining Democracy: What We Owe the Other Side*, are available from the church now for those who would like to read it over the summer. In his book, Talise explores what it means to preserve democratic principles, what our obligations and values are as citizens of a democracy, and how we open ourselves to being in honest dialogue with those who hold differing political views from our own. Discounted books can be ordered for \$10 online: <https://bit.ly/BMPCBookpickup> or by contacting JenniferMcArthur@bmpc.org.

PRIDE MONTH RESOURCES. During June a variety of books on topics related to LGBTQ+ inclusion in the world and the church are available on the Converse in the Court shelves in the Ministries Center. These resources are part of our Converse Library collection and are available to borrow. As we work to build a more inclusive world, may these resources help us increase our understanding, broaden our welcome, and deepen our faith in an expansive God.

Upcoming

BMPC HIKE/WORK DAY. Sat., Jun. 8, 9:00 a.m., beginning at Haverford College Campus. The Environmental Justice Committee invites all to join together for a hike/work day. We will enjoy a hike around the Haverford College Campus, followed by a work session at Sharpe Bird Sanctuary. To sign up, contact David Heaton, heatondavid2@gmail.com by Jun. 3.

SUNDAE SUNDAY. Sun., Jun. 9, 11:15 a.m., Atrium. Join us for ice cream and non-dairy frozen treats to celebrate the end of the school year and the beginning of summer Sunday School.

SENIOR ADULT SPRING SOCIAL. Sun., Jun. 9, 4:00 p.m., Merion Tribute House. Members 55 and older are invited to enjoy fellowship with long-time and new friends at this annual event. Heavy hors d'oeuvres, desserts, and beverages will be served. The cost is \$20 per person, and we will accept free-will cash and check donations for ElderNet of Lower Merion and Narberth. RSVP by Mon., Jun. 3, to MonicaDevane@bmpc.org or <https://bit.ly/SeniorAdultSpringSocial2024>.

BLACK HISTORY IN THE PHILADELPHIA LANDSCAPE. Jun. 12, 7:00 p.m., Fullerton Room. Historian, educator, and author Amy Jane Cohen has studied the history of Black Americans in Philadelphia for more than 20 years. In *Black History in the Philadelphia Landscape: Deep Roots, Continuing Legacy*, Ms. Cohen highlights the contributions of slaves, laborers, entrepreneurs, abolitionists, clergy, educators, historians, and civil rights leaders who influenced the formation of Philadelphia from the 18th to the 21st centuries. The program is free, but please register and order a discounted copy of the book (\$10) by Jun. 7, <https://bit.ly/BMPCBookTalk>. For more info., JenniferMcArthur@bmpc.org.

DIGGING DEEPER-DEVOTIONAL CLASSICS. Sun., Jun. 16 – Jul. 28, 8:45 a.m., Gloucester Room. This Sunday morning Adult Education class will resume for six weeks this summer (skipping Jul. 7) to study Richard Foster's Devotional Classics. This collection includes excerpts from the works of great spiritual writers of the past as well as contemporary spiritual leaders. Members of the class will take turns facilitating the discussion. For more info. and to order a book, contact JenniferMcArthur@bmpc.org.

LESSONS IN LIGHT, CONVERSATIONS ON THE SANCTUARY STAINED GLASS. Sun., Jun. 16, 23, 30, 11:15 a.m., Sanctuary. We will spend three weeks looking closely at the five Sanctuary stained glass windows located in the Chancel and Transepts. The class will explore the design process, the theological and biblical details they illuminate, and the ways that the windows capture a particular moment in the church's history. This class will be taught by the Rev. Rebecca Kirkpatrick.

In the Gallery

SEEKING FREEDOM: PORTRAITS OF MASS INCARCERATION. May 5 through Sept. 1, Gallery. Several large portraits, created in batik, quilting, and embroidery by textile artist Carolyn Harper, form a dramatic exhibition that combines the portraits with texts written by the artist in collaboration with the sitters, telling the stories of these currently and formerly incarcerated people.

Caring & Sharing

CASSEROLE BLITZ. Sat., Jun. 15, 8:30 a.m., Ministries Center Kitchen. Join us for the last Casserole Blitz of the season to make casseroles and friends! Enjoy this family activity (children over age 5) as you get to know BMPC folks you haven't met before and support a good cause while working with others to prepare casseroles for area shelters. Please use our RSVP link to sign up: <https://bit.ly/Blitz-RSVP>.

JUNETEENTH CELEBRATION ON THE MAIN LINE. Sat., Jun. 22, 12:00-6:00 p.m., Vernon Young Playground, Ardmore. Join your neighbors and friends for a local celebration of Juneteenth. The event will include music, food and community vendors, including a table hosted by BMPC Volunteers sharing information about our congregation and work in the local community. For more info., contact JenniferMcArthur@bmpc.org.

HABITAT FOR HUMANITY PHILADELPHIA. Sat., Aug. 10, 8:30 a.m. - 3:00 p.m., off campus. Looking for a meaningful way to volunteer? Habitat for Humanity Philadelphia welcomes you! Habitat works alongside volunteers toward a vision of a city where everyone has a decent place to live, and we invite you to help provide shelter for others. Email JenniferMcArthur@bmpc.org to register. Limited spots available.

SANCTUARY FLOWER DONATIONS. Openings are available in June and July for donors who wish to give flowers in memory of or in honor of loved ones. Later, our Deacons deliver small arrangements of the Sanctuary flowers to homebound church members. If you would like to donate flowers for a Sunday worship service, contact SusanThorkelson@mac.com.

NON-PERISHABLE FOOD DONATIONS NEEDED. During the summer, our local food pantries need extra support through the donations of non-perishable items. You can bring items for donation - soup, canned chicken, fruit cups/canned fruit, oatmeal, box cereal, pasta, paper goods, juice, and brown rice - during the week to the Church Office reception desk or leave them in the Narthex of the Sanctuary or Chapel on Sunday mornings. Thank you in advance for your support of the fight against hunger.

SUPPORT OUR LOCAL REFUGEE EFFORTS. The BMPC Refugee Support Committee continues in its work to support local families and individuals making a new home in our community and greater Philadelphia. Supporting refugees and asylum seekers means walking with them as they navigate legal, governmental, educational, and community resources. The Committee's work also includes providing financial resources to supplement the limited government assistance they receive. If you would like to contribute financially to the work of the BMPC Refugee Support Committee, please donate by writing "Refugee Support" on the memo line of a check, or give a one-time or recurring gift online at <https://onrealm.org/bmpc/give/refugee>.

Calendar

Sunday, June 2

7:45 a.m.
8:00 a.m.
9:00 a.m.

Childcare (Birth-Kindergarten), Ed. Bldg., Rm. 101

Worship with Communion, Chapel

"Seeking Freedom", Gallery

Discover BMPC, Gloucester Room

Bay Fund Meeting, Ed. Bldg., Library

Hersheypark Fun Day, off campus

Worship Together Sunday Grades K-12

Worship with Sanctuary Choir,

Sanctuary and Livestreamed Service on www.bmpc.org

Atrium Cafe, Atrium

11:00 a.m.

Monday, June 3

No events scheduled

Tuesday, June 4

10:30 a.m.
1:00 p.m.
7:00 p.m.

Tai Chi (Hybrid), Gymnasium

Dance for Parkinson's Disease (PD) Class, Gymnasium

Deacon's Meeting, Fullerton Room

Wednesday, June 5

9:30 a.m.

Yoga206 Bone Boost, Gymnasium

Thursday, June 6

11:00 a.m.
2:00 p.m.
3:00 p.m.
5:45 p.m.

Artists' Gathering, Fine Arts Center

Church Offices Close Early

Baldwin's Graduation, Sanctuary

Case/Pancoast Wedding Rehearsal, Sanctuary

Friday, June 7

10:00 a.m.
5:00 p.m.

Senior Adult Council Meeting, virtual

Case/Pancoast Wedding, Sanctuary

Saturday, June 8

7:00 a.m.

11:00 a.m.

Saturday Morning Men's Connection Group,
Converse House Parlor

Barbara Smetana Memorial Service, Chapel

Sunday, June 9

8:00 a.m.
10:00 a.m.

Worship with Communion, Chapel

Worship with Sanctuary Choir,

Sanctuary and Livestreamed Service on www.bmpc.org

The Rev. Dr. Agnes W. Norfleet will preach.

This page was intentionally left blank.

This page was intentionally left blank.

Worship Staff

Agnes W. Norfleet, Pastor

Leigh DeVries, Associate Pastor for Youth & Their Families

Rebecca Kirkpatrick, Associate Pastor for Adult Education & Mission

Kirby Lawrence Hill, Interim Associate Pastor for Pastoral Care & Senior Adults

Rachel Pedersen, Associate Pastor for Children & Family Ministry

Franklyn C. Pottorff, Associate Pastor for Congregational Life & Stewardship

Jeffrey Brillhart, Director of Music & Fine Arts

Edward Landin Senn, Assistant Director of Music

Contact Information

Bryn Mawr Presbyterian Church

625 Montgomery Avenue, Bryn Mawr, PA 19010

610-525-2821 | www.bmpc.org

24/7 Answering Service for Pastoral Emergencies:
610-525-2821

The Middleton Center: 610-525-0766 |
info@middletoncenter.org

The Weekday School: 610-525-2821, ext. 8840

www.facebook.com/BrynMawrPres

www.instagram.com/BrynMawrPres

www.youtube.com/user/brynmawrpres

