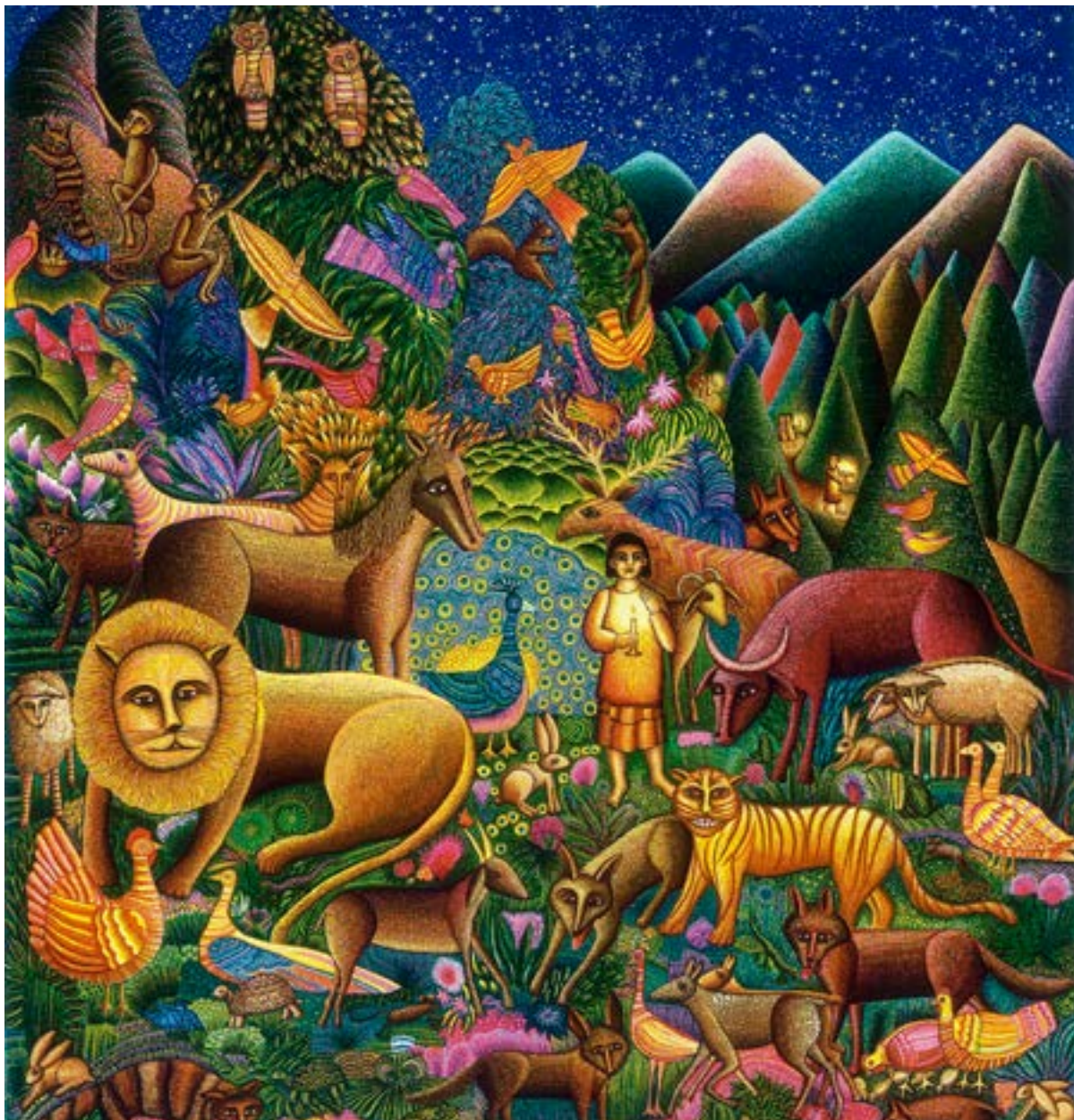


# *Bryn Mawr Presbyterian Church*

Sunday, June 9, 2024 | 10:00 a.m., Sanctuary

Third Sunday after Pentecost



## WELCOME

### NEW HERE?

We are pleased that you are joining us as we worship God this morning. We invite you to introduce yourself to one of our pastors in the Atrium following the worship service. All of our programs, ministries and opportunities for mission are open to everyone. Come join us!

### LIVESTREAMED CHURCH SERVICES

In addition to in-person worship, the Sunday worship services are available to watch live at 10:00 a.m. on our livestreaming page: [www.bmpc.org/livestream](http://www.bmpc.org/livestream). For your convenience, the service also will be posted on our Worship Services page on Monday.

### CHILDCARE AND SUNDAY SCHOOL

Childcare is available on Sundays from 7:45 a.m. to 11:15 a.m. for children ages six months and older. See Sunday School class information on this page. Please contact the Rev. Rachel Pedersen, [RachelPedersen@bmpc.org](mailto:RachelPedersen@bmpc.org) or Childcare Coordinator Erika Henry, [childcare@bmpc.org](mailto:childcare@bmpc.org) with any questions.

### WEEKLY E-NEWSLETTER

Subscribe to our BMPC eNews by visiting our website: [www.bmpc.org](http://www.bmpc.org)

## Today's Schedule

### Childcare (infant - age 5)

7:45 a.m. – 11:15 a.m.  
Ed. Bldg., Rm. 101

### Worship with Communion

8:00 a.m., Chapel

### Discover BMPC

9:00 a.m., Gloucester Room

### “Seeking Freedom” Exhibit

9:00 a.m. to 12:00 p.m., Gallery

### Sunday School Classes

#### K - Grade 3

10:00 a.m., Worship in Sanctuary

10:15 a.m., Ed. Building

#### Grades 4 - 12

10:00 a.m., Worship Together

Sunday, Sanctuary

### Sundae Sunday

11:15 a.m., Front Lawn

## GATHERING OF GOD'S PEOPLE

Please note that online worshipers join the livestream at 9:50 a.m.

We invite you to prepare for worship in quiet reflection.

### PRELUDE

Praise to the Lord, the Almighty,  
the King of Creation

Sigfrid Karg-Elert

### WELCOME

Rebecca Kirkpatrick

### † CALL TO WORSHIP

One: Rejoice in the Lord, you righteous;

**All: It is good for the just to sing praises.**

One: Sing to the Lord a new song;

**All: For your word, O God, is right, and your works are sure.**

One: You love righteousness and justice;

**All: Your loving-kindness fills the whole earth!**

### † HYMN 14

For the Beauty of the Earth

DIX

### CALL TO CONFESSION

#### AND PRAYER OF CONFESSION (in unison)

God of all creation, we admit our need of the wisdom that is from above, pure, peace-loving, open to reason. We can be devious, rather than straightforward, hypocritical rather than sincere, unforgiving rather than merciful, cruel rather than kind. Forgive our bitter jealousies that lead to quarreling, our selfish ambition that destroys others in the way, and our refusal to go to the risky places where you call us. With your justice and mercy, forgive and heal us and set us on the path you choose for us in Christ.

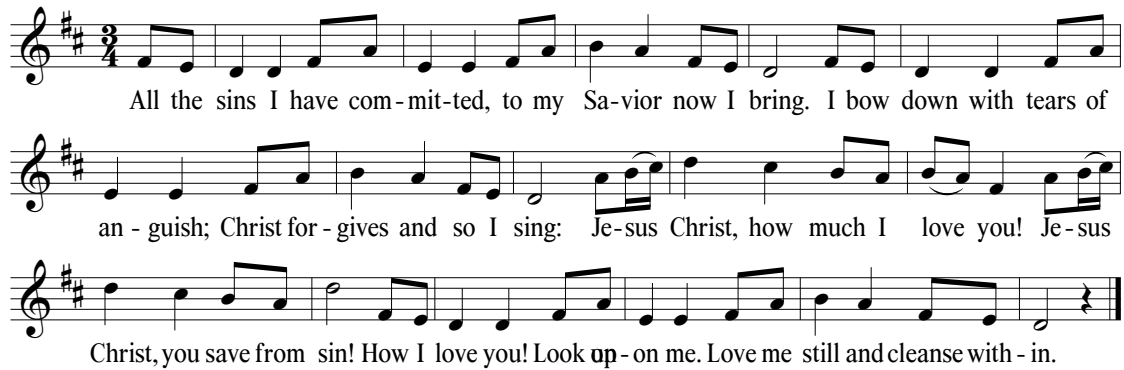
*A moment of silence for personal reflection and confession.*

### ASSURANCE OF PARDON

*During the Sung Response, children are invited to come forward for the Children's Moment.*

**SUNG RESPONSE**

NETTLETON



All the sins I have com-mit-ted, to my Sa-vior now I bring. I bow down with tears of  
an - guish; Christ for - gives and so I sing: Je-sus Christ, how much I love you! Je-sus  
Christ, you save from sin! How I love you! Look up - on me. Love me still and cleanse with - in.

**PROCLAMATION OF THE WORD****CHILDREN'S MOMENT**

Franklyn C. Pottorff

**THE SACRAMENT OF BAPTISM**

One: Do we, as members of the church of Jesus Christ, promise to guide and nurture these children by word and deed, with love and prayer, encouraging them to know and follow Christ and to be faithful members of Christ's church?

All: **We do.**

**HYMN 188, vs 1**

Jesus Loves Me!

JESUS LOVES ME

Jesus loves me! This I know, for the Bible tells me so. Little ones to him belong.  
They are weak, but he is strong. Yes, Jesus loves me! Yes, Jesus loves me! Yes,  
Jesus loves me! The Bible tells me so.

**PRAYER FOR ILLUMINATION**

Franklyn C. Pottorff

**FIRST LESSON** Psalm 107:1-3, 23-32 (pg. 559 in pew Bible)**ANTHEM**

Lord Jesus, Think on Me  
Carlyle Quinn, contralto

Robert Elmore

Lord Jesus, think on me and purge away my sin. From earthborn passions set me free and make me pure within. Lord Jesus think on me, with care and woe opprest. Let me thy loving servant be and taste thy promised rest. Lord Jesus, think on me; nor let me go astray. Through darkness and perplexity point thou the heavenly way. Lord Jesus, think on me. That when the flood is past I may the eternal brightness see and share the joy at last. Amen.

**SECOND LESSON** Jonah 1:1-17 (pg. 859 in pew Bible)

Agnes W. Norfleet

One: The Word of the Lord.

All: **Thanks be to God.****SERMON***Jonah: Reluctant Prophet and a Fish*

Agnes W. Norfleet

All Creatures Great &amp; Small Summer Series

† **HYMN 722**

Lord, Speak to Me that I May Speak

CANONBURY

**RESPONSE TO THE WORD**† **AFFIRMATION OF FAITH**

Kirby Lawrence Hill

We affirm that the universe of matter, energy, and life is God's good creation in all its parts. Therefore we may work and play in it and explore it with wonder and joy. God included human beings among the creatures he made and charged them to care for other living things. We acknowledge we are kin to the other creatures. We are dependent on the systems that sustain all life. We hold the earth in trust for future generations of living things. The Lord forbids us to plunder, foul and destroy it. The Lord expects us to produce, to consume, to reproduce in ways that make the world's goodness available to all people and reflect God's love for all creatures. The Lord bids us use our technical skills for beauty, order, health, and peace.

~ Excerpt from a Declaration of Faith

**PASTORAL PRAYER AND THE LORD'S PRAYER**

Our Father who art in heaven, hallowed be thy name, thy kingdom come, thy will be done, on earth as it is in heaven. Give us this day our daily bread. And forgive us our trespasses, as we forgive those who trespass against us. And lead us not into temptation, but deliver us from evil. For thine is the kingdom, and the power, and the glory, forever. Amen.

**INVITATION TO DISCIPLESHIP**

**OFFERTORY ANTHEM**      "And Then Shall Your Light      Felix Mendelssohn  
Break Forth" from *Elijah*

And then shall your light break forth as the light of morning breaketh, and your health shall speedily spring forth then; And the glory of the Lord ever shall reward you. Lord, our Creator, how excellent thy Name is in all the nations! Thou givest glory to heaven. Amen.

*Please fill in the Friendship Pad at the end of your pew;  
pass it down your row and back again.*

† **DOXOLOGY** 606    Praise God, from Whom All Blessings Flow    OLD HUNDREDTH  
Praise God, from whom all blessings flow; praise God, all creatures here below;  
praise God above, ye heavenly host; praise Father, Son, and Holy Ghost. Amen.

† **PRAYER OF DEDICATION**      Franklyn C. Pottorff

† **HYMN** 331      God of the Ages, Whose Almighty Hand      NATIONAL HYMN

† **BENEDICTION AND CHORAL RESPONSE**      Agnes W. Norfleet

**POSTLUDE**      "Final" from *Symphonie III*      Louis Vierne

†  
"I am the resurrection and the life."  
Rachel Jenkins ~ June 4, 2024

## WORSHIP NOTES

### RECEIVING THE SACRAMENT OF BAPTISM

Heidi Elizabeth Gongwer  
Daughter of Tom Gongwer & Amy Foster

Jane Rowan MacGregor  
Daughter of Scott & Alex MacGregor

Fielding DeWitt Wycoff  
Son of Jordan & Rianne Wycoff

Hadley Hayes Wycoff  
Daughter of Jordan & Rianne Wycoff

### SANCTUARY FLOWERS

Given to the glory of God and in honor of the 62nd wedding anniversary  
of John and Sandi Stouffer

### BULLETIN COVER IMAGE

Peaceable Kingdom © 2016 John August Swanson | Eyekons  
Used with permission.

## MUSIC NOTES

### PLAYING THE CARILLON

Nancy Lawrence Hill

## New Announcements

**PERSPECTIVES & RETROSPECTIVES: BEING LGBTQ+ IN THE CHURCH.** Sat., Jun. 15, 1 p.m. at Penn Wynne Presbyterian Church (130 Haverford Rd.). Join us as we listen to the past and current experiences, challenges, and triumphs of LGBTQ+ pastors in our area, including BMPC's own Rev. Leigh DeVries, along with Rev. Dr. Lisa Farrell, Rev. Kevin Porter, and Rev. David Norse-Thomas! Reach out to Pastor Leigh at [ldevries@bmpc.org](mailto:ldevries@bmpc.org) to get the QR code to register for lunch.

**SUMMER CHOIR.** Beginning today, 9:00 a.m., Sanctuary Choir Loft. From mid-June through the beginning of September, all singers ages 12+ are invited to come to church any Sunday at 9:00 a.m. for a short rehearsal in the choir loft, then stay and sing for the 10:00 a.m. worship service. Summer choir is simple (one anthem, hymns, and a closing response), and informal (no robes). No long-term commitment; no need to sign up in advance. All are welcome!

**2024 BACKPACK AND SCHOOL SUPPLY COLLECTION.** Help children served by Gemma Services start school on the right foot! Bring completed backpacks (3 composition or spiral notebooks, 4 pocket folders, box of pencils, large eraser, box of 24 crayons, colored pencils or markers, 2 glue sticks) to the Narthex in the Sanctuary by Sun., Jul. 28. You may bring a “completed backpack” or help by purchasing individual supplies from our Amazon list: <https://bit.ly/BMPCBackpackList>, or contact [MaryRichards@bmpc.org](mailto:MaryRichards@bmpc.org) for more info.

## **Today**

**SUNDAE SUNDAY.** Sun., Jun. 9, 11:15 a.m., Front Lawn. Join us for ice cream and non-dairy frozen treats to celebrate the end of the school year and the beginning of summer Sunday School.

## **Upcoming**

**BLACK HISTORY IN THE PHILADELPHIA LANDSCAPE.** Jun. 12, 7:00 p.m., Fullerton Room. Historian, educator, and author Amy Jane Cohen has studied the history of Black Americans in Philadelphia for more than 20 years. In *Black History in the Philadelphia Landscape: Deep Roots, Continuing Legacy*, Ms. Cohen highlights the contributions of slaves, laborers, entrepreneurs, abolitionists, clergy, educators, historians, and civil rights leaders who influenced the formation of Philadelphia from the 18th to the 21st centuries. The program is free, but please register and order a discounted copy of the book for \$10 at <https://bit.ly/BMPCBookTalk>. For more info., [JenniferMcArthur@bmpc.org](mailto:JenniferMcArthur@bmpc.org).

**DIGGING DEEPER-DEVOTIONAL CLASSICS.** Sun., Jun. 16 – Jul. 28, 8:45 a.m., Gloucester Room. This Sunday morning Adult Education class will resume for six weeks this summer (skipping Jul. 7) to study Richard Foster’s Devotional Classics. This collection includes excerpts from the works of great spiritual writers of the past as well as contemporary spiritual leaders. Members of the class will take turns facilitating the discussion. For more info. and to order a book, contact [JenniferMcArthur@bmpc.org](mailto:JenniferMcArthur@bmpc.org).

**LESSONS IN LIGHT, CONVERSATIONS ON THE SANCTUARY STAINED GLASS.** Sun., Jun. 16, 23, 30, 11:15 a.m., Sanctuary. We will spend three weeks looking closely at the five Sanctuary stained glass windows located in the Chancel and Transepts. The class will explore the design process, the theological and biblical details they illuminate, and the ways that the windows capture a particular moment in the church’s history. This class will be taught by the Rev. Rebecca Kirkpatrick.

**SUSTAINING DEMOCRACY: WHAT WE OWE THE OTHER SIDE.** We look forward to welcoming Dr. Robert Talise as our fall Community Forum speaker on Mon., Sept. 30. Copies of his most recent book, *Sustaining Democracy: What We Owe the Other Side*, are available from the church now for those who would like to read it over the summer. In his book, Talise explores what it means to preserve democratic principles, what our obligations and values are as citizens of a democracy, and how we open ourselves to being in honest dialogue with those who hold differing political views from our own. Discounted books can be ordered for \$10 online at <https://bit.ly/BMPCBookpickup> or by contacting [JenniferMcArthur@bmpc.org](mailto:JenniferMcArthur@bmpc.org).

## **In the Ministries Center**

**PRIDE MONTH RESOURCES.** During June a variety of books on topics related to LGBTQ+ inclusion in the world and the church are available on the Converse in the Court shelves in the Ministries Center. These resources are part of our Converse Library collection and are available to borrow. As we work to build a more inclusive world, may these resources help us increase our understanding, broaden our welcome, and deepen our faith in an expansive God.

**SEEKING FREEDOM: PORTRAITS OF MASS INCARCERATION.** May 5 through Sept. 1, Gallery. Several large portraits, created in batik, quilting, and embroidery by textile artist Carolyn Harper, form a dramatic exhibition that combines the portraits with texts written by the artist in collaboration with the sitters, telling the stories of these currently and formerly incarcerated people.

## **Caring & Sharing**

**CASSEROLE BLITZ.** Sat., Jun. 15, 8:30 a.m., Ministries Center Kitchen. Join us for the last Casserole Blitz of the season to make casseroles and friends! Enjoy this family activity (children over age 5) as you get to know BMPC folks you haven’t met before and support a good cause while working with others to prepare casseroles for area shelters. Please use our RSVP link to sign up: <https://bit.ly/Blitz-RSVP>.

**JUNETEENTH CELEBRATION ON THE MAIN LINE.** Sat., Jun. 22, 12:00-6:00 p.m., Vernon Young Playground, Ardmore. Join your neighbors and friends for a local celebration of Juneteenth. The event will include music, food and community vendors, including a table hosted by BMPC Volunteers sharing information about our congregation and work in the local community. For more info., contact [JenniferMcArthur@bmpc.org](mailto:JenniferMcArthur@bmpc.org).

**SANCTUARY FLOWER DONATIONS.** Openings are available in June and July for donors who wish to give flowers in memory of or in honor of loved ones. Later, our Deacons deliver small arrangements of the Sanctuary flowers to homebound church members. If you would like to donate flowers for a Sunday worship service, contact [SusanThorkelson@mac.com](mailto:SusanThorkelson@mac.com).

**NON-PERISHABLE FOOD DONATIONS NEEDED.** During the summer, our local food pantries need extra support through the donations of non-perishable items. You can bring items for donation - soup, canned chicken, fruit cups/canned fruit, oatmeal, box cereal, pasta, paper goods, juice, and brown rice - during the week to the Church Office reception desk or leave them in the Narthex of the Sanctuary or Chapel on Sunday mornings. Thank you in advance for your support of the fight against hunger.

**SUPPORT OUR LOCAL REFUGEE EFFORTS.** The BMPC Refugee Support Committee continues in its work to support local families and individuals making a new home in our community and greater Philadelphia. Supporting refugees and asylum seekers means walking with them as they navigate legal, governmental, educational, and community resources. The Committee's work also includes providing financial resources to supplement the limited government assistance they receive. If you would like to contribute financially to the work of the BMPC Refugee Support Committee, please donate by writing "Refugee Support" on the memo line of a check, or give a one-time or recurring gift online at <https://onrealm.org/bmpc/give/refugee>.

## ***Calendar***

### **Sunday, June 9**

7:45	a.m.	Childcare (Birth-Kindergarten), Ed. Bldg., Rm. 101
8:00	a.m.	<b>Worship with Communion, Chapel</b>
9:00	a.m.	"Seeking Freedom", Gallery
		Discover BMPC, Gloucester Room
10:00	a.m.	<b>Worship with Sanctuary Choir, Sanctuary and Livestreamed</b>
		Worship Together Sunday Grades 4-5
10:15	a.m.	Sunday School K-Grade 3, Ed. Bldg.
11:15	a.m.	Sundae Sunday, Front Lawn
4:00	p.m.	Senior Adult Spring Social, off campus

### **Monday, June 10**

4:00	p.m.	Environmental Justice Committee Meeting, Cannon Room
6:00	p.m.	Anti Racism Committee Meeting, Cannon Room

### **Tuesday, June 11**

10:30	a.m.	Tai Chi (Hybrid), Gymnasium
1:00	p.m.	Dance for Parkinson's Disease (PD) Class, Gymnasium
7:00	p.m.	Session Meeting, Fullerton Room

### **Wednesday, June 12**

7:00	p.m.	VBC Volunteer Training, Cannon Room
		Black History in the Philadelphia Landscape, Fullerton Room

### **Thursday, June 13**

11:00	a.m.	Artists' Gathering, Fine Arts Center
-------	------	--------------------------------------

### **Friday, June 14**

No events scheduled

### **Saturday, June 15**

7:00	a.m.	Saturday Morning Men's Connection Group, Converse House Parlor
8:30	a.m.	Casserole Blitz, Ministries Center Kitchen

### **Sunday, June 16**

8:00	a.m.	<b>Worship with Communion, Chapel</b>
10:00	a.m.	<b>Worship with Summer Choir, Sanctuary and Livestreamed</b>
		The Rev. Dr. Agnes W. Norfleet will preach.

## **Worship Staff**

**Agnes W. Norfleet**, Pastor

**Leigh DeVries**, Associate Pastor for Youth & Their Families

**Rebecca Kirkpatrick**, Associate Pastor for Adult Education & Mission

**Kirby Lawrence Hill**, Interim Associate Pastor for Pastoral Care & Senior Adults

**Rachel Pedersen**, Associate Pastor for Children & Family Ministry

**Franklyn C. Pottorff**, Associate Pastor for Congregational Life & Stewardship

**Jeffrey Brillhart**, Director of Music & Fine Arts

**Edward Landin Senn**, Assistant Director of Music

## **Contact Information**

Bryn Mawr Presbyterian Church

625 Montgomery Avenue, Bryn Mawr, PA 19010

610-525-2821 | [www.bmpc.org](http://www.bmpc.org)

24/7 Answering Service for Pastoral Emergencies:  
610-525-2821

The Middleton Center: 610-525-0766 |  
[info@middletoncenter.org](mailto:info@middletoncenter.org)

The Weekday School: 610-525-2821, ext. 8840

[www.facebook.com/BrynMawrPres](https://www.facebook.com/BrynMawrPres)

[www.instagram.com/BrynMawrPres](https://www.instagram.com/BrynMawrPres)

[www.youtube.com/user/brynmawrpres](https://www.youtube.com/user/brynmawrpres)

