



# **FROM GRATITUDE TO GENEROSITY**

**STEWARDSHIP 2015**

*Bryn Mawr  
Presbyterian Church*

---

October 19, 2014  
8:00 a.m., Chapel  
19th Sunday after Pentecost

# **Welcome to BMPC**

*Lord, Your word is a lamp to my feet and a light to my path.*

**VISITING TODAY?** Please introduce yourself to a pastor after the service.

**TODAY'S SCHEDULE FOR CHILDREN AND YOUTH**  
(see signs in building entrances for room assignments):

- **Children age 2 to PreK:** 10:00 a.m. classes, Ed. Bldg.
- **Grades K-5:** 10:15 a.m., classes in the Ed. Bldg. (10:00-10:15 a.m. families worship together in the Sanctuary)
- **Grades 6-12:** 10:00 a.m., Youth Gathering in Gym; 10:30 a.m., Grade Groups in the Ministries Center

Children's bulletins with crayons may be found near the main doors. Nursery care with electronic pagers is available in our Ed. Bldg.

*As we gather for worship, please silence your cell phone and prepare your heart and mind for the worship of God.*

## **Worship Notes**

**THE FLOWERS** in the Sanctuary are given to the glory of God and in loving memory of Daniel Mark Caesar, Matthew Joseph Hnatin, and Adell Burdick. *There is an opening for Sanctuary flowers on Sun., Nov. 16. Interested donors may contact Ruth Miller Cox at 610-446-1595.*

**THE CARILLON** will be played today by Bob Holmes.

**ASSISTING** with the service today is Elder Brad Baturka.

**FROM GRATITUDE TO GENEROSITY** is our theme for Stewardship 2015. Like the gospel story of the loaves and fishes, our individual gifts are blessed by God and multiplied. Please prayerfully consider increasing your pledge this year. Stop by the Ministries Center to see our Gratitude Wall and fill out a card that lists the things for which you are grateful to God.

**CELEBRATING THE SACRAMENT OF BAPTISM TODAY AT 10:00 a.m.:** Adam Jackson Rota, son of Jennifer Zegel and Dominic Rota; Gianna Alessia Battavio, daughter of Becky and Joe Battavio, Ruby Cash D'Adessi, daughter of Eleanor and Jerry D'Adessi; Hadley Ashley Davis, daughter of Leandra and Ryan Davis, Chloe Jisele Moffa, daughter of Jennefir and Joseph Moffa, and Laney Catherine Bassett, daughter of Jennifer and Trevor Bassett. Assisting in the baptism will be Krista Vaughan and Peter Munroe.



# GATHERING AROUND THE WORD

## PRELUDE

## WELCOME

Kellen A. Smith

(Please fill in the Fellowship Register at the end of your pew.)

## † CALL TO WORSHIP

One: Let us come together in the presence of God,

**All: One in faith and one in spirit.**

One: For it is good to give thanks to the Lord,

**All: And to sing praises to God's name.**

One: We come trusting in God's goodness and grace,

**All: And responding with gratitude and thanksgiving.**

One: Let us worship God with joyful songs of praise.

## † HYMN 489

Open Now Thy Gates of Beauty

UNSER HERRSCHER

## CALL TO CONFESSION AND

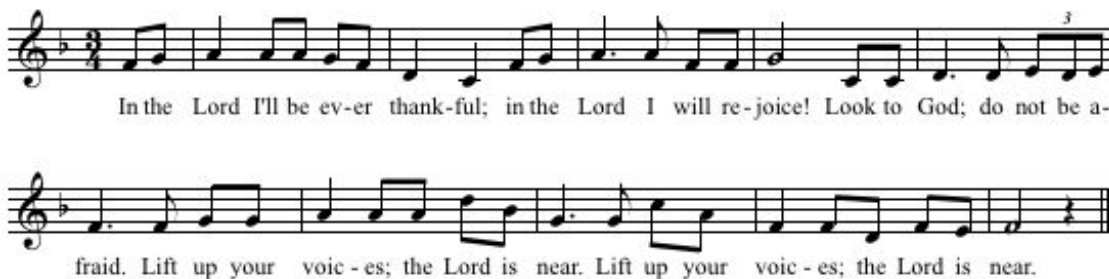
### PRAYER OF CONFESSION *(in unison)*

Loving God, we offer our praise for your wonderful gifts to us—for your love that sustains us and binds us together as your people; for your power that fills the earth and brings new life; for your peace that takes away fear and gives us hope. Forgive us, O God, when we fail to be grateful, and when we fail to trust in your benevolent presence. Help us to know how best to love and serve you with gladness and joy, through Jesus Christ.

(A moment of silence for personal reflection and confession.)

## ASSURANCE OF PARDON

## CONGREGATIONAL RESPONSE *(please remain seated)*



Text and Music: © 1991 Les Presses de Taizé (admin. GIA Publications, Inc.).  
All rights reserved. Reprinted under OneLicense.net #A-716211.

## HEARING THE WORD

**PRAYER FOR ILLUMINATION**

Brad Baturka

**FIRST LESSON**      Deuteronomy 26:1-11 (*p. 180 in pew Bible*)

Brad Baturka

**SECOND LESSON**      James 1:17-18 (*p. 229 in pew Bible*)

Agnes W. Norfleet

One: The Word of the Lord.      **All: Thanks be to God.**

**SERMON**

*The Offering*  
In a Sermon Series on Worship

Agnes W. Norfleet

## RESPONDING TO THE WORD

† **HYMN 414**

As Those of Old Their Firstfruits Brought

FOREST GREEN

## SACRAMENT OF THE LORD'S SUPPER

Kellen A. Smith

*You are invited to come forward, using the center aisle, to partake of the Lord's Supper by intinction (dipping a piece of bread in the cup); return to your seat using the side aisle. Gluten- and casein-free elements are on the center table.*

*You are invited to bring your morning offering to the baskets when you come forward.*

### THE INVITATION TO COMMUNION AND THE GREAT THANKSGIVING

One: The Lord be with you.

**All: And also with you.**

One: Lift up your hearts.

**All: We lift them to the Lord.**

One: Let us give thanks to the Lord our God.

**All: It is right to give our thanks and praise.**

### THE LORD'S PRAYER *(in unison)*

Our Father who art in heaven, hallowed be thy name, thy kingdom come, thy will be done, on earth as it is in heaven. Give us this day our daily bread. And forgive us our trespasses, as we forgive those who trespass against us. And lead us not into temptation, but deliver us from evil. For thine is the kingdom, and the power, and the glory, forever. Amen.

### THE COMMUNION OF THE PEOPLE

#### PRAYER OF DEDICATION

Agnes W. Norfleet

#### FROM GRATITUDE TO GENEROSITY

Jon Liggett

† HYMN 344

Christ of the Upward Way

SURSUM CORDA

† SENDING AND PASSING OF THE PEACE

One: The peace of Christ be with you.

**All: And also with you.**

#### POSTLUDE

† Please stand, if able.

## **Highlights**

**CAN ARABS AND JEWS LIVE TOGETHER IN ISRAEL?** Sun., Oct. 26, 11:15 a.m., Gym. Led by our mission partner Rabbi Ron Kronish, Director of the Interreligious Coordinating Council in Israel and a noted educator, author, lecturer and speaker. Co-sponsored by Mainline Reform Temple, Temple Beth Elohim, Congregation Beth Am Israel, Adath Israel, Beth David Reform Temple, and Temple Beth Hillel-Beth El. Contact: CarolSchmidt@bmpc.org, ext. 8819.

**SENIOR ADULTS BRUNCH.** Sun., Nov. 9, 11:00 a.m., Congregational Hall. As part of our “Living Legacy Series,” the Rev. Dr. Paul Watermulder reflects on his years as a youth at BMPC and his parents’ impact on his life, BMPC and the Presbyterian Church. To purchase brunch tickets (\$10), contact AmyBauer@bmpc.org, ext. 8821.

**BMPC COMMUNITY FORUM: THOMAS WRIGHT.** Mon., Nov. 10, 7:30 p.m., Chapel. Brookings Institution fellow and former senior researcher for the Princeton Project on National Security, Thomas Wright, discusses “America’s Challenge: Geopolitical Cooperation or Competition?” As the U.S. responds to the revisionist foreign policies of Russia and China, which dynamic—competition or cooperation—will prevail? Free and open to the public; no reservations needed. Contact: Anna May Charrington, grandebay1@gmail.com.

## **Announcements**

**AS OCTOBER IS “CLERGY APPRECIATION MONTH,”** our Session formally extends its appreciation to our current pastors, Agnes, Kellen, Nicole and Rachel, for their selfless dedication in serving the Bryn Mawr Presbyterian Church congregation and the wider church, and remembers with great gratitude all those other pastors who have served this congregation so well and faithfully since its founding.

**REQUIEM IN WORSHIP.** Sun., Nov. 2, 10:00 a.m., Sanctuary. BMPC’s own Choir School will lead the worship service with a performance of John Rutter’s *Requiem*, written in memory of the composer’s father who died in 1983. Contact: StephanieSpeakman@bmpc.org, ext. 8836.

**WEDNESDAY NIGHT DINNERS.** Wednesdays, 5:30-7:00 p.m., Congregational Hall (food served until 6:45 p.m.) Cost: \$8 for adults; \$5 for children/students. To view upcoming fresh-ingredient menus by Chef Ruth, see the “Announcements” box on the homepage of [www.bmpc.org](http://www.bmpc.org) or call the church office at 610-525-2821.

**SUNDAY PARKING REMINDER.** Those who are able-bodied are encouraged to park behind Harcum College (access on Pennswood Road). A Montgomery Avenue crossing guard is available for safety. We expect our Radnor Street lot to reopen in early November.

**CARILLON PLAYERS WANTED.** We're expanding our team of carillonneurs who play our 49-bell carillon. Some medium-to-advanced keyboard skills and the physical strength to climb the tower stairs to reach the carillon-playing console required; lessons provided free of charge. Carillonneurs typically play one Sunday each month. Contact: JeffreyBrillhart@bmpc.org, ext. 8834.

**WATERCOLOR EXHIBIT.** Nature paintings by Radnor artist Ardyth Sobyak will hang in the Ministries Center through Nov. 30 and are available for purchase. A reception to meet the artist will be held after the concert by French organist Thierry Escaich on Nov. 23. Contact: StephanieSpeakman@bmpc.org, ext. 8836.

**PRAYER MINISTRY.** Our Thursday Morning Prayer Group meets at 9:00 a.m. (note new time) in the Chapel to pray for BMPC members and friends; an email-supported prayer chain now expands this ministry. Submit prayer requests on the cards found in the pew racks or visit [www.bmpc.org/prayer](http://www.bmpc.org/prayer). Contact: Jeanne LeBuhn, [wlebuhn200@comcast.net](mailto:wlebuhn200@comcast.net), 610-688-6984.

**HOSPITAL INFORMATION.** Due to current privacy laws, it is more difficult for our pastors to know when BMPC members have been admitted to a hospital. Call the church office at 610-525-2821 if you or any one you know is hospitalized, and let us know if and when you volunteer at any local hospitals.

**NEED A RIDE?** We can help you with some of your transportation needs. For rides to medical appointments call the church office receptionist, 610-525-2821. Volunteer drivers welcome.

## ***Children, Youth, and their Families***

---

**HIGH SCHOOL HAYRIDE AND BONFIRE.** Today, 5:00-7:00 p.m., Sugartown Strawberries Farm, Malvern. Youth in grades 9-12 are invited for a night of fellowship, campfire songs, and s'mores. Cost: \$10. Register online ([www.bmpc.org](http://www.bmpc.org) > Calendar > Open Registrations). Contact: KellenSmith@bmpc.org, ext. 8822.

**MIDDLE SCHOOL MINIATURE GOLF.** Sun., Oct. 26, 4:00-6:00 p.m., Freddy's Family Fun Center, Lansdale. Youth in grades 6-8 are invited for an afternoon of fellowship, mini golf and pizza. Cost: \$10. Register by Oct. 24 online ([www.bmpc.org](http://www.bmpc.org) > Calendar > Open Registrations) or by contacting AmyBauer@bmpc.org, ext. 8821.

**Y-GROUP ANNUAL HAYRIDE AND BONFIRE.** Sun., Oct. 26, 5:30 p.m., Linvilla Orchards, 137 W. Knowlton Rd., Media. Fall fun for the whole family; enjoy a hayride followed by a full cook-out dinner. Contact: LaineyMcMahon@hotmail.com.

**HALLOWEEN OPEN HOUSE.** Fri., Oct. 31, 2:00-4:00 p.m., Ministries Center. As we approach All Saints' Day, children are invited to celebrate by trick-or-treating through our church offices. Costumes are optional; hot cider will be served. Contact: MaryRichards@bmpc.org, ext. 8811.

**WEEKDAY SCHOOL REGISTRATION FOR 2015-2016.** BMPC members have priority in placement through Oct. 31. Programs are available for children ages 2 1/2 to 5. Contact: Kim Black, weekdayschool@bmpc.org, 610-520-8840.

## ***Adult Gatherings and Spiritual Enrichment***

---

### **BIBLE STUDIES AND BOOK DISCUSSIONS:**

- **Men's Study Group.** 2nd and 4th Wednesdays of each month, 9:30 a.m., Converse House, led by Paul MacMurray. This group is studying Islam; men of all ages invited. Contact: AmyBauer@bmpc.org, ext. 8821.
- **Women's Coffee Cup Bible Study.** Wednesdays, 10:00 a.m., Gloucester Room. The Rev. Rachel Pedersen leads our study of Paul's Letter to the Philippians. Bring your Bible; supplementary materials provided. Contact: MaryRichards@bmpc.org, ext. 8811.
- **Couples Bible Study.** Sundays, 8:45 a.m., Ed. Bldg., Room 206. Open to couples of all ages; topics TBD. Contact: Barbara Heaton, bhheaton@comcast.net.
- **Urban Suburban Book Group.** Tues., Oct. 21, 12:00 noon, Converse House Parlor. Discuss *The Orphan Train* by Christina Baker Kline. Bring a bag lunch and beverage. Contact: Sherry.Archer19@yahoo.com.
- **Dimensions in Literature.** Tues., Oct. 21, 1:30 p.m., Fullerton Room, led by Erlis Wickersham. Discuss *Dear Life: Short Stories*, Alice Munro's collection of short stories detailing lives of ordinary people. Readers of all ages welcome. Contact: Eric Johnson, johnsone@cpenow.com.
- **Y-Group Book Discussion** (*for mothers of children newborn to age 18 and other women with children in their care*). Tues., Oct. 28, 7:30 p.m., home of Kathy Stevens. Discuss *Me Before You*, by Jojo Moyes; bring an appetizer or beverage to share. RSVP: Kathy Stevens, kpstevens@comcast.net, 610-527-5666.
- **Horizon Bible Study.** Wed., Nov. 5, 10:30 a.m., Rosemont Presbyterian Village, led by the Rev. Dr. Agnes W. Norfleet. Study of *Reconciling Paul - A Contemporary Study of 2 Corinthians* by Elizabeth Hinson-Hasty. Contact: Joyce Malott, okf405@erols.com.

**THE STORY OF THE JEWS.** Sundays, 8:45 a.m., Conference Room, led by the Rev. Dr. Paul MacMurray. After viewing 20 minutes of the PBS series presented by British historian Simon Schama, discuss the program. Contact: CarolSchmidt@bmpc.org, ext. 8819.



**ARE YOUR AFFAIRS IN ORDER?** Today, Oct. 26 and Nov. 2, 11:15 a.m., Gloucester Room. A three-part series; attend one or all three. Today: Understanding Palliative Care, led by Dr. Janet Haas. Oct. 26: Powers of Attorney and Advance Directive, led by Robert Slutsky. Nov. 2: Planning Your Memorial Service, led by the Rev. Dr. Agnes W. Norfleet. Contact: CarolSchmidt@bmpc.org, ext. 8819.

**MEALS IN THE NEW TESTAMENT.** Sundays, Oct. 26-Nov. 16, 8:45 OR 11:15 a.m., Witherspoon Parlor (choose the time that's best for you). Dr. Hal Taussig of Union Theological Seminary discusses meals in the New Testament, going beyond our usual knowledge of "the land of milk and honey." Contact: CarolSchmidt@bmpc.org, ext. 8819.

**PERSPECTIVES IN MUSIC.** Mon., Oct. 27, 1:30 p.m., Fine Arts Center. Our Assistant Organist, Edward Landin, performs. Contact: DeAnnClancy@hotmail.com, 610-525-8347.

**GREAT DECISIONS.** Tues., Oct. 28, 2:30 p.m., Rosemont Presbyterian Village Auditorium, led by Marilyn Irwin. Discuss China's Foreign Policy—its rise to regional dominance and what it means for its Asian neighbors and U.S. foreign policy. Contact: Marilyn Irwin, marirwin@aol.com.

**NEW SUNDAY OFFERING FOR WOMEN.** Sun., Nov. 2, 8:45 a.m., Ed. Bldg., Room 205. Looking to build and strengthen connections with other women at BMPC? Interested in an opportunity for fellowship, fun and faith that fits your busy schedule? Join us to see what this new group is all about. Childcare available without a reservation. Contact: PeggyHermann@hotmail.com.

**REPORT ON YOUTH TRIP TO BELIZE.** Sun., Nov. 2, 11:15 a.m., Congregational Hall. Hear first-hand accounts of this past July's High School Mission Trip. Contact: CarolSchmidt@bmpc.org, ext. 8819.

**CHRISTIAN JEWISH ALLIES.** Sun., Nov. 9, 11:15 a.m., Gloucester Room, led by representatives of the Christian Jewish Allies. Hear an overview of the 8-10 week curriculum of *Steadfast Hope: The Palestinian Quest for Just Peace*, an inspiring view of the activities being undertaken by Muslim, Jewish, and Christian peacemakers working for justice and reconciliation. Contact: CarolSchmidt@bmpc.org, ext. 8819.

**WEEKDAY CONTEMPLATIVE PRAYER GROUP.** Wednesdays, 8:00 a.m., Chapel, led by Patricia Danzon and David Heaton. Before turning to the day's work, listen to God by using traditional prayer, *Lectio Divina*, and Centering Prayer. Contact: PatriciaDanzon@gmail.com.

**SATURDAY MORNING MEN'S GROUP.** Saturdays, 7:00 a.m., Converse House. Men of all ages invited for fellowship and lively discussions. Contact: LeeComer@hotmail.com.

## Local and Worldwide Outreach

**ASSIST WITH THE INTERFAITH HOSPITALITY NETWORK.** IHN guests will arrive TODAY and stay until October 26. If you are able to assist by preparing and serving dinner or spending the night, contact John Heard, johnheard76@gmail.com, 610-623-7140.

**CARING AND CRAFTS.** Mon., Oct. 20, 9:15 a.m., Gloucester Room. Knitters gather to make scarves, prayer shawls, mittens, and hats for residents at “theVillage” (formerly Presbyterian Children’s Village). Contact: Maryalice Stoltzfus, 610-527-3909.

### **HELP FIGHT HUNGER:**

- **Provide Snacks for our Tutoring Program Children.** On Tuesday and Wednesday evenings, hunger is an issue with our Tutoring Program children. You can help by providing snacks from a supplied menu for one week a year. This involves making sandwiches and providing fruit and one additional snack. More information: AmyBauer@bmpc.org, ext. 8821.
- **Hunger Committee Liaison Brunch.** Sun., Oct. 26, 11:15 a.m., Congregational Hall. Hear Philadelphia hunger leaders speak about food challenges facing area emergency food cupboards and shelters. RSVP by Oct. 17: AmyBauer@bmpc.org, ext. 8821.

## This Week’s Calendar Highlights

To see a full listing of ALL upcoming activities and meetings, visit our website: [www.bmpc.org](http://www.bmpc.org)

### Sunday, October 19, 2014

- 8:00 a.m.    *Worship with Communion in the Chapel*  
10:00 a.m.    *Worship with Sanctuary Choir and Baptism in the Sanctuary*  
                  *The Rev. Dr. Agnes W. Norfleet will preach.*  
*Infant and Toddler Childcare, Ed. Bldg., Room 102, 7:45-11:15 a.m.*  
8:45 a.m.    Couples Bible Study, Ed. Bldg., Room 206  
                  *The Story of the Jews*, Conference Room  
                  Art@9, Ed. Bldg., Room 201  
10:00 a.m.    Sunday School for Ages 2-4, Ed. Bldg.  
                  Grades K-5 begin worship in the Sanctuary  
                  Youth Gathering (Grades 6-12), Gym  
10:15 a.m.    Sunday School for Grades K-5, Ed. Bldg.  
10:30 a.m.    Youth Grade Groups, Ministries Center  
                  Confirmation, Witherspoon Parlor  
11:00 a.m.    Cafe in the Court  
                  Fellowship for Families, Ed. Bldg. Lobby  
11:15 a.m.    Youth Chorale, Fine Arts Center  
                  Are Your Affairs in Order?, Gloucester Room  
6:00 p.m.    High School Youth Hay Ride, Sugartown Strawberries

## **Monday, October 20, 2014**

9:15 a.m. Caring and Crafts, Gloucester Room

## **Tuesday, October 21, 2014**

12:00 p.m. Urban Suburban Book Group, Converse House  
1:00 p.m. Dimensions in Literature, Fullerton Room  
1:30 p.m. Parkinson's Disease Support Group, Gloucester Room, Witherspoon Parlor  
6:30 p.m. BMPC Tutoring Program, Ed. Bldg.

## **Wednesday, October 22, 2014**

8:00 a.m. Weekday Contemplative Prayer Group, Chapel  
9:30 a.m. Men's Study Group, Converse House  
10:00 a.m. Women's Coffee Cup Bible Study, Gloucester Room  
4:00 p.m. Carol Choir, Ed. Bldg., Room 202  
Jubilate Ringers, Fine Arts Center  
5:00 p.m. Beginners Choir, St. Andrew Boy Choir, St. Cecilia Girl Choir, Fine Arts Center  
5:30 p.m. Wednesday Night Dinner (served until 6:45 p.m.), Congregational Hall  
6:00 p.m. StudentServe Meeting (grades 9-12), Loft  
6:30 p.m. Tintinnabulators, Fine Arts Center  
BMPC Tutoring Program, Ed. Bldg.

## **Thursday, October 23, 2014**

9:00 a.m. Thursday Morning Prayer Group, Chapel  
9:30 a.m. Artists' Gathering, Gloucester Room  
10:00 a.m. Memoir Writing Class, Fullerton Room  
7:00 p.m. Sanctuary Choir, Fine Arts Center  
9:00 p.m. Harmony Choir, Fine Arts Center

## **Saturday, October 25, 2014**

7:00 a.m. Saturday Morning Men's Group, Converse House

## **Sunday, October 26, 2014 — Stewardship Dedication Sunday**

8:00 a.m. *Worship with Communion in the Chapel*  
10:00 a.m. *Worship with Sanctuary Choir in the Sanctuary*  
*The Rev. Dr. Agnes W. Norfleet will preach.*

## ***Worship Staff***

---

**Agnes W. Norfleet**, Pastor

**Nicole Wilkinson Duran**, Supply Pastor for Adult Education, Outreach,  
and Worldwide Ministries

**Rachel Pedersen**, Associate Pastor for Children and Family Ministry

**Kellen A. Smith**, Associate Pastor for Youth, Their Families and College Ministries

**Jeffrey Brillhart**, Director of Music and Fine Arts

**Kate Shealy**, Choir School Director

**Edward Landin**, Assistant Organist

## ***Contact Information***

---

**Bryn Mawr Presbyterian Church**

625 Montgomery Avenue, Bryn Mawr, PA 19010

(P) 610-525-2821 • (F) 610-525-9476

[www.bmpc.org](http://www.bmpc.org) (for program information, calendar, and staff directory)

[Facebook.com/BrynMawrPC](https://www.facebook.com/BrynMawrPC) • [Twitter.com/BrynMawrPres](https://twitter.com/BrynMawrPres)

24/7 Answering Service for Pastoral Emergencies: 610-525-2821

Main Line Adult Day Center: 610-527-4220

The Middleton Center: 610-525-0766 • [JoyceKrajian@bmpc.org](mailto:JoyceKrajian@bmpc.org)

The Weekday School (Preschool): 610-525-2821, ext. 8840



# **FROM GRATITUDE TO GENEROSITY**

**STEWARDSHIP 2015**

***Bryn Mawr  
Presbyterian Church***

---

October 19, 2014  
10:00 a.m., Sanctuary  
19th Sunday after Pentecost

# Welcome to BMPC

*Lord, Your word is a lamp to my feet and a light to my path.*

**VISITING TODAY?** Stop by the Welcome Center to the left of the main exit to learn more about this church or ask questions, then join us for refreshments in the Ministries Center Court or Education Building Lobby (ground floor) after worship.

**TODAY'S SCHEDULE FOR CHILDREN AND YOUTH**  
(see signs in building entrances for room assignments):

- **Children age 2 to PreK:** 10:00 a.m. classes, Ed. Bldg.
- **Grades K-5:** 10:15 a.m., classes in the Ed. Bldg. (10:00-10:15 a.m. families worship together in the Sanctuary)
- **Grades 6-12:** 10:00 a.m., Youth Gathering in Gym; 10:30 a.m., Grade Groups in the Ministries Center

Children's bulletins with crayons may be found near the main doors. Nursery care with electronic pagers is available in our Ed. Bldg.

**LARGE PRINT BULLETINS AND HEARING DEVICES** are available near the church entrance; ask an usher.

## Worship Notes

**THE FLOWERS** in the Sanctuary are given to the glory of God and in loving memory of Daniel Mark Caesar, Matthew Joseph Hnatin, and Adell Burdick. *There is an opening for Sanctuary flowers on Sun., Nov. 16. Interested donors may contact Ruth Miller Cox at 610-446-1595.*

**THE CARILLON** will be played today by Bob Holmes.

**CELEBRATING THE SACRAMENT OF BAPTISM TODAY:** Adam Jackson Rota, son of Jennifer Zegel and Dominic Rota; Gianna Alessia Battavio, daughter of Becky and Joe Battavio, Ruby Cash D'Adessi, daughter of Eleanor and Jerry D'Adessi; Hadley Ashley Davis, daughter of Leandra and Ryan Davis, Chloe Jisele Moffa, daughter of Jennefir and Joseph Moffa, and Laney Catherine Bassett, daughter of Jennifer and Trevor Bassett. Assisting in the baptism will be Elder Krista Vaughan and Peter Munroe.

**FROM GRATITUDE TO GENEROSITY** is our theme for Stewardship 2015. Like the gospel story of the loaves and fishes, our individual gifts are blessed by God and multiplied. Please prayerfully consider increasing your pledge this year. Stop by the Ministries Center to see our Gratitude Wall and fill out a card that lists the things for which you are grateful to God.

**GREETING AND HOSTING TODAY** are members of our Peacemaking and Interfaith Hospitality Network (IHN) Committees. Join them at Café in the Court following 10:00 a.m. worship to enjoy refreshments and fellowship.



# GATHERING OF GOD'S PEOPLE

\* **PRELUDE** "Adagio" from *Symphonie V* Charles-Marie Widor

\* **WELCOME** Kellen A. Smith

\*† **CALL TO WORSHIP**

One: Let us come together in the presence of God,

**All: One in faith and one in spirit.**

One: For it is good to give thanks to the Lord,

**All: And to sing praises to God's name.**

One: We come trusting in God's goodness and grace,

**All: And responding with gratitude and thanksgiving.**

One: Let us worship God with joyful songs of praise.

† **HYMN 489** Open Now Thy Gates of Beauty UNSER HERRSCHER

**CALL TO CONFESSION AND PRAYER OF CONFESSION** (*in unison*)

Loving God, we offer our praise for your wonderful gifts to us—for your love that sustains us and binds us together as your people; for your power that fills the earth and brings new life; for your peace that takes away fear and gives us hope. Forgive us, O God, when we fail to be grateful, and when we fail to trust in your benevolent presence. Help us to know how best to love and serve you with gladness and joy, through Jesus Christ.

(A moment of silence for personal reflection and confession.)

**ASSURANCE OF PARDON**

\*† **GLORIA PATRI** (*in unison*) (Hymnal 579)

Glory be to the Father and to the Son and to the Holy Ghost; as it was in the beginning, is now and ever shall be, world without end. Amen, Amen.

(Children are invited to come forward for the *Children's Moment*.)

## PROCLAMATION OF THE WORD

**CHILDREN'S MOMENT**

Agnes W. Norfleet

## THE SACRAMENT OF BAPTISM

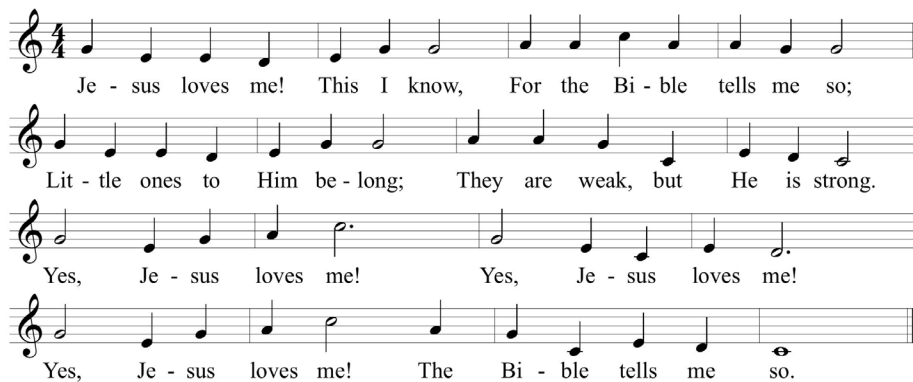
Krista Vaughan and Peter Munroe

One: Do we, as members of the church of Jesus Christ, promise to guide and nurture these children by word and deed, with love and prayer, encouraging them to know and follow Christ and to be faithful members of his church?

All: **We do.**

## SENDING HYMN

### Jesus Loves Me



## FIRST LESSON

Deuteronomy 26:1-11 (*p. 180 in pew Bible*)

Nicole Duran

## ANTHEM

### The Call

Lee Hoiby

#### In Memory of Rowland G. Lex

Come, my Way, my Truth, my Life: such a Way, as gives us breath; such a Truth, as ends all strife; such a Life, as killeth death. Come, my Light, my Feast, my Strength: such a Feast as mends in length; such a Strength as makes his guest. Come, my Joy, my Love, my Heart: such a Joy, as none can move; such a Love, as none can move; such a Heart, as joys in Love.

## SECOND LESSON

James 1:17-18 (*p. 229 in pew Bible*)

Agnes W. Norfleet

## SERMON

### *The Offering*

Agnes W. Norfleet

In a Sermon Series on Worship

\*† **HYMN** 414

As Those of Old Their Firstfruits Brought

FOREST GREEN

## RESPONSE TO THE WORD

† **AFFIRMATION OF FAITH** (from *A Brief Statement of Faith*)

Nicole Duran

In life and in death we belong to God.  
Through the grace of our Lord Jesus Christ,  
the love of God,  
and the communion of the Holy Spirit,



we trust in the one triune God, the Holy One of Israel,  
whom alone we worship and serve.  
With believers in every time and place,  
we rejoice that nothing in life or in death  
can separate us from the love of God in Christ Jesus our Lord.  
Glory to the Father, and to the Son, and to the Holy Spirit. Amen.

**PRAYERS OF THE PEOPLE  
AND THE LORD'S PRAYER**

Nicole Duran

Our Father who art in heaven, hallowed be thy name, thy kingdom come, thy will be done, on earth as it is in heaven. Give us this day our daily bread. And forgive us our trespasses, as we forgive those who trespass against us. And lead us not into temptation, but deliver us from evil. For thine is the kingdom, and the power, and the glory, forever. Amen.

(Please fill in the *Fellowship Register* at the end of your pew;  
pass it down your row and back again.)

**FROM GRATITUDE TO GENEROSITY**

Jon Liggett

**OFFERING AND  
OFFERTORY ANTHEM**

Come, Let Us Sing to the Lord

René Clausen

Come, let us sing to the Lord; let us shout for joy to the rock of our salvation. Let us come before God's presence with thanksgiving, and raise a loud shout unto God with psalms. For the Lord is a great God, and a great King above all Gods. In God's hands are the deep places, and the heights of the hills also are his. The sea is his, for he made it, and his hands formed the dry land. Let us come before the Lord our maker. Let us come before the Lord on bended knee. For he is our God, and we are the people of his pasture and the sheep of his hand. Glory be to the Father, and to the Son, and to the Holy Spirit; as it was in the beginning, is now, and forever. Amen.

† **DOXOLOGY** (*in unison*)

(*Hymnal 592*)

Praise God, from whom all blessings flow; praise God, all creatures here below;  
praise God above, ye heavenly host; praise Father, Son, and Holy Ghost. Amen.

† **PRAYER OF DEDICATION**

† **HYMN 344**

Christ of the Upward Way

SURSUM CORDA

† **BENEDICTION WITH CHORAL RESPONSE**

Agnes W. Norfleet

**POSTLUDE**

Toccata in D, Op. 59/5

Max Reger

## **Highlights**

**CAN ARABS AND JEWS LIVE TOGETHER IN ISRAEL?** Sun., Oct. 26, 11:15 a.m., Gym. Led by our mission partner Rabbi Ron Kronish, Director of the Interreligious Coordinating Council in Israel and a noted educator, author, lecturer and speaker. Co-sponsored by Mainline Reform Temple, Temple Beth Elohim, Congregation Beth Am Israel, Adath Israel, Beth David Reform Temple, and Temple Beth Hillel-Beth El. Contact: CarolSchmidt@bmpc.org, ext. 8819.

**SENIOR ADULTS BRUNCH.** Sun., Nov. 9, 11:00 a.m., Congregational Hall. As part of our “Living Legacy Series,” the Rev. Dr. Paul Watermulder reflects on his years as a youth at BMPC and his parents’ impact on his life, BMPC and the Presbyterian Church. To purchase brunch tickets (\$10), contact AmyBauer@bmpc.org, ext. 8821.

**BMPC COMMUNITY FORUM: THOMAS WRIGHT.** Mon., Nov. 10, 7:30 p.m., Chapel. Brookings Institution fellow and former senior researcher for the Princeton Project on National Security, Thomas Wright, discusses “America’s Challenge: Geopolitical Cooperation or Competition?” As the U.S. responds to the revisionist foreign policies of Russia and China, which dynamic—competition or cooperation—will prevail? Free and open to the public; no reservations needed. Contact: Anna May Charrington, grandebay1@gmail.com.

## **Announcements**

**AS OCTOBER IS “CLERGY APPRECIATION MONTH,”** our Session formally extends its appreciation to our current pastors, Agnes, Kellen, Nicole and Rachel, for their selfless dedication in serving the Bryn Mawr Presbyterian Church congregation and the wider church, and remembers with great gratitude all those other pastors who have served this congregation so well and faithfully since its founding.

**REQUIEM IN WORSHIP.** Sun., Nov. 2, 10:00 a.m., Sanctuary. BMPC’s own Choir School will lead the worship service with a performance of John Rutter’s *Requiem*, written in memory of the composer’s father who died in 1983. Contact: StephanieSpeakman@bmpc.org, ext. 8836.

**WEDNESDAY NIGHT DINNERS.** Wednesdays, 5:30-7:00 p.m., Congregational Hall (food served until 6:45 p.m.) Cost: \$8 for adults; \$5 for children/students. To view upcoming fresh-ingredient menus by Chef Ruth, see the “Announcements” box on the homepage of [www.bmpc.org](http://www.bmpc.org) or call the church office at 610-525-2821.

**SUNDAY PARKING REMINDER.** Those who are able-bodied are encouraged to park behind Harcum College (access on Pennswood Road). A Montgomery Avenue crossing guard is available for safety. We expect our Radnor Street lot to reopen in early November.

**CARILLON PLAYERS WANTED.** We're expanding our team of carillonneurs who play our 49-bell carillon. Some medium-to-advanced keyboard skills and the physical strength to climb the tower stairs to reach the carillon-playing console required; lessons provided free of charge. Carillonneurs typically play one Sunday each month. Contact: JeffreyBrillhart@bmpc.org, ext. 8834.

**WATERCOLOR EXHIBIT.** Nature paintings by Radnor artist Ardyth Sobyak will hang in the Ministries Center through Nov. 30 and are available for purchase. A reception to meet the artist will be held after the concert by French organist Thierry Escaich on Nov. 23. Contact: StephanieSpeakman@bmpc.org, ext. 8836.

**PRAYER MINISTRY.** Our Thursday Morning Prayer Group meets at 9:00 a.m. (note new time) in the Chapel to pray for BMPC members and friends; an email-supported prayer chain now expands this ministry. Submit prayer requests on the cards found in the pew racks or visit [www.bmpc.org/prayer](http://www.bmpc.org/prayer). Contact: Jeanne LeBuhn, [wlebuhn200@comcast.net](mailto:wlebuhn200@comcast.net), 610-688-6984.

**HOSPITAL INFORMATION.** Due to current privacy laws, it is more difficult for our pastors to know when BMPC members have been admitted to a hospital. Call the church office at 610-525-2821 if you or any one you know is hospitalized, and let us know if and when you volunteer at any local hospitals.

**NEED A RIDE?** We can help you with some of your transportation needs. For rides to medical appointments call the church office receptionist, 610-525-2821. Volunteer drivers welcome.

## ***Children, Youth, and their Families***

---

**HIGH SCHOOL HAYRIDE AND BONFIRE.** Today, 5:00-7:00 p.m., Sugartown Strawberries Farm, Malvern. Youth in grades 9-12 are invited for a night of fellowship, campfire songs, and s'mores. Cost: \$10. Register online ([www.bmpc.org](http://www.bmpc.org) > Calendar > Open Registrations). Contact: KellenSmith@bmpc.org, ext. 8822.

**MIDDLE SCHOOL MINIATURE GOLF.** Sun., Oct. 26, 4:00-6:00 p.m., Freddy's Family Fun Center, Lansdale. Youth in grades 6-8 are invited for an afternoon of fellowship, mini golf and pizza. Cost: \$10. Register by Oct. 24 online ([www.bmpc.org](http://www.bmpc.org) > Calendar > Open Registrations) or by contacting AmyBauer@bmpc.org, ext. 8821.

**Y-GROUP ANNUAL HAYRIDE AND BONFIRE.** Sun., Oct. 26, 5:30 p.m., Linvilla Orchards, 137 W. Knowlton Rd., Media. Fall fun for the whole family; enjoy a hayride followed by a full cook-out dinner. Contact: LaineyMcMahon@hotmail.com.

**HALLOWEEN OPEN HOUSE.** Fri., Oct. 31, 2:00-4:00 p.m., Ministries Center. As we approach All Saints' Day, children are invited to celebrate by trick-or-treating through our church offices. Costumes are optional; hot cider will be served. Contact: MaryRichards@bmpc.org, ext. 8811.

**WEEKDAY SCHOOL REGISTRATION FOR 2015-2016.** BMPC members have priority in placement through Oct. 31. Programs are available for children ages 2 1/2 to 5. Contact: Kim Black, weekdayschool@bmpc.org, 610-520-8840.

## ***Adult Gatherings and Spiritual Enrichment***

---

### **BIBLE STUDIES AND BOOK DISCUSSIONS:**

- **Men's Study Group.** 2nd and 4th Wednesdays of each month, 9:30 a.m., Converse House, led by Paul MacMurray. This group is studying Islam; men of all ages invited. Contact: AmyBauer@bmpc.org, ext. 8821.
- **Women's Coffee Cup Bible Study.** Wednesdays, 10:00 a.m., Gloucester Room. The Rev. Rachel Pedersen leads our study of Paul's Letter to the Philippians. Bring your Bible; supplementary materials provided. Contact: MaryRichards@bmpc.org, ext. 8811.
- **Couples Bible Study.** Sundays, 8:45 a.m., Ed. Bldg., Room 206. Open to couples of all ages; topics TBD. Contact: Barbara Heaton, bhheaton@comcast.net.
- **Urban Suburban Book Group.** Tues., Oct. 21, 12:00 noon, Converse House Parlor. Discuss *The Orphan Train* by Christina Baker Kline. Bring a bag lunch and beverage. Contact: Sherry.Archer19@yahoo.com.
- **Dimensions in Literature.** Tues., Oct. 21, 1:30 p.m., Fullerton Room, led by Erlis Wickersham. Discuss *Dear Life: Short Stories*, Alice Munro's collection of short stories detailing lives of ordinary people. Readers of all ages welcome. Contact: Eric Johnson, johnsone@cpenow.com.
- **Y-Group Book Discussion** (*for mothers of children newborn to age 18 and other women with children in their care*). Tues., Oct. 28, 7:30 p.m., home of Kathy Stevens. Discuss *Me Before You*, by Jojo Moyes; bring an appetizer or beverage to share. RSVP: Kathy Stevens, kpstevens@comcast.net, 610-527-5666.
- **Horizon Bible Study.** Wed., Nov. 5, 10:30 a.m., Rosemont Presbyterian Village, led by the Rev. Dr. Agnes W. Norfleet. Study of *Reconciling Paul - A Contemporary Study of 2 Corinthians* by Elizabeth Hinson-Hasty. Contact: Joyce Malott, okf405@erols.com.

**THE STORY OF THE JEWS.** Sundays, 8:45 a.m., Conference Room, led by the Rev. Dr. Paul MacMurray. After viewing 20 minutes of the PBS series presented by British historian Simon Schama, discuss the program. Contact: CarolSchmidt@bmpc.org, ext. 8819.

**ARE YOUR AFFAIRS IN ORDER?** Today, Oct. 26 and Nov. 2, 11:15 a.m., Gloucester Room. A three-part series; attend one or all three. Today: Understanding Palliative Care, led by Dr. Janet Haas. Oct. 26: Powers of Attorney and Advance Directive, led by Robert Slutsky. Nov. 2: Planning Your Memorial Service, led by the Rev. Dr. Agnes W. Norfleet. Contact: CarolSchmidt@bmpc.org, ext. 8819.

**MEALS IN THE NEW TESTAMENT.** Sundays, Oct. 26-Nov. 16, 8:45 OR 11:15 a.m., Witherspoon Parlor (choose the time that's best for you). Dr. Hal Taussig of Union Theological Seminary discusses meals in the New Testament, going beyond our usual knowledge of "the land of milk and honey." Contact: CarolSchmidt@bmpc.org, ext. 8819.

**PERSPECTIVES IN MUSIC.** Mon., Oct. 27, 1:30 p.m., Fine Arts Center. Our Assistant Organist, Edward Landin, performs. Contact: DeAnnClancy@hotmail.com, 610-525-8347.

**GREAT DECISIONS.** Tues., Oct. 28, 2:30 p.m., Rosemont Presbyterian Village Auditorium, led by Marilyn Irwin. Discuss China's Foreign Policy—its rise to regional dominance and what it means for its Asian neighbors and U.S. foreign policy. Contact: Marilyn Irwin, marirwin@aol.com.

**NEW SUNDAY OFFERING FOR WOMEN.** Sun., Nov. 2, 8:45 a.m., Ed. Bldg., Room 205. Looking to build and strengthen connections with other women at BMPC? Interested in an opportunity for fellowship, fun and faith that fits your busy schedule? Join us to see what this new group is all about. Childcare available without a reservation. Contact: PeggyHermann@hotmail.com.

**REPORT ON YOUTH TRIP TO BELIZE.** Sun., Nov. 2, 11:15 a.m., Congregational Hall. Hear first-hand accounts of this past July's High School Mission Trip. Contact: CarolSchmidt@bmpc.org, ext. 8819.

**CHRISTIAN JEWISH ALLIES.** Sun., Nov. 9, 11:15 a.m., Gloucester Room, led by representatives of the Christian Jewish Allies. Hear an overview of the 8-10 week curriculum of *Steadfast Hope: The Palestinian Quest for Just Peace*, an inspiring view of the activities being undertaken by Muslim, Jewish, and Christian peacemakers working for justice and reconciliation. Contact: CarolSchmidt@bmpc.org, ext. 8819.

**WEEKDAY CONTEMPLATIVE PRAYER GROUP.** Wednesdays, 8:00 a.m., Chapel, led by Patricia Danzon and David Heaton. Before turning to the day's work, listen to God by using traditional prayer, *Lectio Divina*, and Centering Prayer. Contact: PatriciaDanzon@gmail.com.

**SATURDAY MORNING MEN'S GROUP.** Saturdays, 7:00 a.m., Converse House. Men of all ages invited for fellowship and lively discussions. Contact: LeeComer@hotmail.com.

## Local and Worldwide Outreach

**ASSIST WITH THE INTERFAITH HOSPITALITY NETWORK.** IHN guests will arrive TODAY and stay until October 26. If you are able to assist by preparing and serving dinner or spending the night, contact John Heard, johnheard76@gmail.com, 610-623-7140.

**CARING AND CRAFTS.** Mon., Oct. 20, 9:15 a.m., Gloucester Room. Knitters gather to make scarves, prayer shawls, mittens, and hats for residents at “theVillage” (formerly Presbyterian Children’s Village). Contact: Maryalice Stoltzfus, 610-527-3909.

### **HELP FIGHT HUNGER:**

- **Provide Snacks for our Tutoring Program Children.** On Tuesday and Wednesday evenings, hunger is an issue with our Tutoring Program children. You can help by providing snacks from a supplied menu for one week a year. This involves making sandwiches and providing fruit and one additional snack. More information: AmyBauer@bmpc.org, ext. 8821.
- **Hunger Committee Liaison Brunch.** Sun., Oct. 26, 11:15 a.m., Congregational Hall. Hear Philadelphia hunger leaders speak about food challenges facing area emergency food cupboards and shelters. RSVP by Oct. 17: AmyBauer@bmpc.org, ext. 8821.

## This Week’s Calendar Highlights

To see a full listing of ALL upcoming activities and meetings, visit our website: [www.bmpc.org](http://www.bmpc.org)

### Sunday, October 19, 2014

- 8:00 a.m.    *Worship with Communion in the Chapel*  
10:00 a.m.    *Worship with Sanctuary Choir and Baptism in the Sanctuary*  
                  *The Rev. Dr. Agnes W. Norfleet will preach.*  
*Infant and Toddler Childcare, Ed. Bldg., Room 102, 7:45-11:15 a.m.*  
8:45 a.m.    Couples Bible Study, Ed. Bldg., Room 206  
                  *The Story of the Jews*, Conference Room  
                  Art@9, Ed. Bldg., Room 201  
10:00 a.m.    Sunday School for Ages 2-4, Ed. Bldg.  
                  Grades K-5 begin worship in the Sanctuary  
                  Youth Gathering (Grades 6-12), Gym  
10:15 a.m.    Sunday School for Grades K-5, Ed. Bldg.  
10:30 a.m.    Youth Grade Groups, Ministries Center  
                  Confirmation, Witherspoon Parlor  
11:00 a.m.    Cafe in the Court  
                  Fellowship for Families, Ed. Bldg. Lobby  
11:15 a.m.    Youth Chorale, Fine Arts Center  
                  Are Your Affairs in Order?, Gloucester Room  
6:00 p.m.    High School Youth Hay Ride, Sugartown Strawberries

## **Monday, October 20, 2014**

9:15 a.m.     Caring and Crafts, Gloucester Room

## **Tuesday, October 21, 2014**

12:00 p.m.     Urban Suburban Book Group, Converse House  
1:00 p.m.     Dimensions in Literature, Fullerton Room  
1:30 p.m.     Parkinson's Disease Support Group, Gloucester Room, Witherspoon Parlor  
6:30 p.m.     BMPC Tutoring Program, Ed. Bldg.

## **Wednesday, October 22, 2014**

8:00 a.m.     Weekday Contemplative Prayer Group, Chapel  
9:30 a.m.     Men's Study Group, Converse House  
10:00 a.m.     Women's Coffee Cup Bible Study, Gloucester Room  
4:00 p.m.     Carol Choir, Ed. Bldg., Room 202  
                    Jubilate Ringers, Fine Arts Center  
5:00 p.m.     Beginners Choir, St. Andrew Boy Choir, St. Cecilia Girl Choir, Fine Arts Center  
5:30 p.m.     Wednesday Night Dinner (served until 6:45 p.m.), Congregational Hall  
6:00 p.m.     StudentServe Meeting (grades 9-12), Loft  
6:30 p.m.     Tintinnabulators, Fine Arts Center  
                    BMPC Tutoring Program, Ed. Bldg.

## **Thursday, October 23, 2014**

9:00 a.m.     Thursday Morning Prayer Group, Chapel  
9:30 a.m.     Artists' Gathering, Gloucester Room  
10:00 a.m.     Memoir Writing Class, Fullerton Room  
7:00 p.m.     Sanctuary Choir, Fine Arts Center  
9:00 p.m.     Harmony Choir, Fine Arts Center

## **Saturday, October 25, 2014**

7:00 a.m.     Saturday Morning Men's Group, Converse House

## **Sunday, October 26, 2014 — Stewardship Dedication Sunday**

8:00 a.m.     *Worship with Communion in the Chapel*  
10:00 a.m.     *Worship with Sanctuary Choir in the Sanctuary*  
                    *The Rev. Dr. Agnes W. Norfleet will preach.*



## ***Worship Staff***

---

**Agnes W. Norfleet**, Pastor

**Nicole Wilkinson Duran**, Supply Pastor for Adult Education, Outreach,  
and Worldwide Ministries

**Rachel Pedersen**, Associate Pastor for Children and Family Ministry

**Kellen A. Smith**, Associate Pastor for Youth, Their Families and College Ministries

**Jeffrey Brillhart**, Director of Music and Fine Arts

**Kate Shealy**, Choir School Director

**Edward Landin**, Assistant Organist

## ***Contact Information***

---

**Bryn Mawr Presbyterian Church**

625 Montgomery Avenue, Bryn Mawr, PA 19010

(P) 610-525-2821 • (F) 610-525-9476

[www.bmpc.org](http://www.bmpc.org) (for program information, calendar, and staff directory)

[Facebook.com/BrynMawrPC](https://www.facebook.com/BrynMawrPC) • [Twitter.com/BrynMawrPres](https://twitter.com/BrynMawrPres)

24/7 Answering Service for Pastoral Emergencies: 610-525-2821

Main Line Adult Day Center: 610-527-4220

The Middleton Center: 610-525-0766 • [JoyceKrajian@bmpc.org](mailto:JoyceKrajian@bmpc.org)

The Weekday School (Preschool): 610-525-2821, ext. 8840