



***Bryn Mawr  
Presbyterian Church***

---

January 10, 2016  
8:00 a.m., Chapel  
Baptism of the Lord

# **Welcome to BMPC**

*Lord, Your word is a lamp to my feet and a light to my path.*

**NEW HERE?** Welcome! Please introduce yourself to a pastor after the service. Our programs are open to all and we invite you to participate according to your interests. Questions? Contact DonnaBarrickman@bmpc.org, ext. 8809.

## **TODAY'S SCHEDULE FOR CHILDREN AND YOUTH:**

**Childcare:** infants - age 2; 7:45 a.m. - 12:30 p.m., Ed. Bldg., Rm. 102

**Children age 2 to PreK:** 10:00 a.m. classes, Ed. Bldg.

**Grades K - 5:** 10:15 a.m., classes, Ed. Bldg.

(10:00-10:15 a.m. families worship together in the Sanctuary)

*If this is your first Sunday, please accompany your child to the Ed. Bldg.*

**Grades 6 - 12:** 10:00 a.m., Youth Gathering in Gym;

10:30 a.m., Grade Groups in the Ministries Center

**GETTING CONNECTED.** Please fill out the Fellowship Register at the end of your pew to let us know that you were here, to provide or update your contact information, and to identify yourself to others in your row so that you may greet each other after worship.

**JOIN US FOR FELLOWSHIP.** Stop by the Ministries Center Court for coffee between 8:00 - 10:00 a.m. and for refreshments and fellowship after the 10:00 a.m. worship service.

*As we gather for worship, please silence your cell phone  
and prepare your heart and mind for the worship of God.*



# GATHERING AROUND THE WORD

## PRELUDE

## WELCOME

Rebecca Kirkpatrick

*Please fill in the Fellowship Register at the end of your pew.*

## CALL TO WORSHIP

One: The voice of God resounds upon the water.

**All: The Spirit of the Lord hovers over the stream.**

One: The Son of God is named “Beloved.”

**All: And all who worship shout out, “Glory!”**

One: Ascribe to the Lord majesty and strength.

**All: Let us worship God in holy splendor.**

† HYMN 403

Open Now Thy Gates of Beauty

UNSER HERRSCHER

## CALL TO CONFESSION

### AND PRAYER OF CONFESSION *(in unison)*

We are precious in your sight,  
yet we often forget that we are your beloved.

We confess that our love is fickle and inconstant.

We follow selfish goals and deny that our way of life harms others  
and hurts your world.

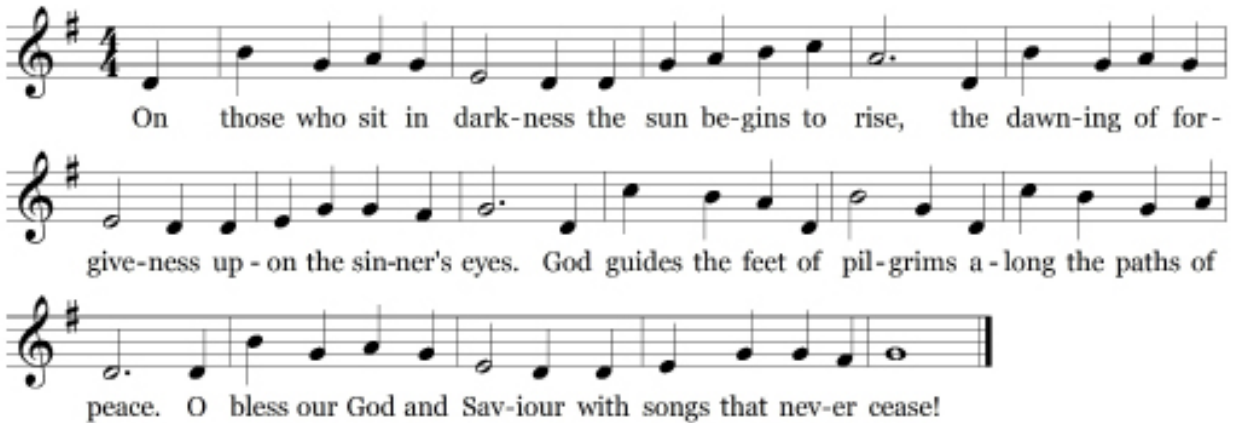
We are sorry and we want to change.

Create in us a clean heart,  
strengthen our resolve,  
reconcile us one to another,  
and bless us with your peace.

*A moment of silence for personal reflection and confession.*

## ASSURANCE OF PARDON

## CONGREGATIONAL RESPONSE



*Text © 1973 The Jubilate Group (admin. Hope Publishing Company. Music © 1983 Hope Publishing Company. All rights reserved. Reprinted under OneLicense.net #A-716211*

## HEARING THE WORD

### PRAYER FOR ILLUMINATION

John Frazier

### FIRST LESSON

Isaiah 43:1-7 (*p. 672 in pew Bible*)

John Frazier

### SECOND LESSON

Luke 3:15-17; 21-22 (*p. 60 in pew Bible*)

Richard Wohlschlaeger

One: The Word of the Lord.

All: **Thanks be to God.**

### SERMON

*As One of Us*

Richard Wohlschlaeger

† **HYMN 156**

Sing of God Made Manifest

SALZBURG

# RESPONDING TO THE WORD

## SACRAMENT OF THE LORD'S SUPPER

*You are invited to come forward, using the center aisle, to partake of the Lord's Supper by intinction (dipping a piece of bread in the cup); return to your seat using the side aisle.*

*Gluten- and casein-free elements are on the center table.*

*You are invited to bring your morning offering to the offering plates when you come forward.*

## THE INVITATION TO COMMUNION AND THE GREAT THANKSGIVING

**One:** The Lord be with you.

**All:** **And also with you.**

**One:** Lift up your hearts.

**All:** **We lift them to the Lord.**

**One:** Let us give thanks to the Lord our God.

**All:** **It is right to give our thanks and praise.**

## THE LORD'S PRAYER (*in unison*)

Our Father who art in heaven, hallowed be thy name, thy kingdom come, thy will be done, on earth as it is in heaven. Give us this day our daily bread. And forgive us our trespasses, as we forgive those who trespass against us. And lead us not into temptation, but deliver us from evil. For thine is the kingdom, and the power, and the glory, forever. Amen.

## THE COMMUNION OF THE PEOPLE

### PRAYER OF DEDICATION

Richard Wohlschlaeger

† **HYMN 516** For the Bread Which You Have Broken KINGDOM

### † **SENDING AND PASSING OF THE PEACE**

**One:** The peace of Christ be with you.

**All:** **And also with you.**

## POSTLUDE

## **Worship Notes**

### **SANCTUARY FLOWERS**

are given to the glory of God in loving memory of  
James R. and Anna H. Affleck  
Walter B. and Roberta Bastow  
W. Barton Bastow

### **GREETING AND HOSTING**

Members of our Outreach Council

### **PLAYING THE CARILLON**

Dianne Heard

### **ASSISTING WITH COMMUNION**

Elder John Frazier

## **Announcements**

**OUR STEWARDSHIP JOURNEY.** If you have not yet pledged, we would love to have you become more deeply engaged in the life of the church by pledging today. Start the new year with deeper commitments: to yourself, to family, to friends and to your life here at BMPC. Pledge cards are in the pews or you may pledge online at [www.bmpc.org](http://www.bmpc.org).

**ART EXHIBIT - CRAFTS, ART, AND CULTURE OF BOTSWANA.** On view and for sale in the Ministries Center through Sun., Jan. 24. Sales support the artists. [StephanieSpeakman@bmpc.org](mailto:StephanieSpeakman@bmpc.org), ext. 8836.

**DAILY DEVOTIONALS.** At our Book Center in the Ministries Center Court you will find books for daily reading during 2016. Stop by following worship and on weekdays from 9:00 a.m. to 5:00 p.m.; the key is at the Reception Desk. Kat MacMurray, [KatRMac2@gmail.com](mailto:KatRMac2@gmail.com).

## **Today**

**COUPLES BIBLE STUDY.** Sundays, 8:45 a.m., Ed. Bldg. Room 205. Discussion of *100 Things for Your Child to Know Before Confirmation* by the Rev. Rebecca Kirkpatrick. Barbara Heaton, [barbhheaton@gmail.com](mailto:barbhheaton@gmail.com).

**FILLING THE WELL WOMEN'S GROUP.** Sundays, 8:45 a.m., Ed. Bldg. Children's Library, 1st floor. Discussion of *The New York Times* bestseller, *This I Believe*. Books available at class. Peggy Hermann, [peggyhermann@hotmail.com](mailto:peggyhermann@hotmail.com).

**SUNDAY MORNING DISCUSSION GROUP.** Sundays, 8:45 a.m., Conference Room. Led by the Rev. Dr. Paul MacMurray. *Time* magazine correspondent Elizabeth Dias asked religious leaders, writers and artists to answer 70 of Jesus' questions. Read five questions each week as daily devotions and discuss reactions on Sunday morning. Books available at class. [CarolSchmidt@bmpc.org](mailto:CarolSchmidt@bmpc.org), ext. 8819.

**LIFE TRANSITIONS.** Sundays through Jan. 24, 11:15 a.m. Witherspoon Parlor. Patricia Danzon, Spiritual Director at the Middleton Center, discusses the distinctions between "change" and "transitions" and the Biblical stories of journey and spiritual writings and practices relevant to life transitions. [CarolSchmidt@bmpc.org](mailto:CarolSchmidt@bmpc.org), ext. 8819.

**SOUTH KOREA TOUR INFO MEETING.** Today, 11:15 a.m., Congregational Hall. The Sanctuary Choir will tour South Korea in late June/early July of 2017, when we will share our music, build relationships with Presbyterian communities, and engage in meaningful outreach. Come to our meeting to learn about how you can join our Sanctuary Choir members for this experience. [StephanieSpeakman@bmpc.org](mailto:StephanieSpeakman@bmpc.org), ext. 8836.

## ***This Week***

**Y-GROUP CASSEROLE BLITZ.** Tues., Jan. 12, 9:15 a.m., main kitchen. Prepare casseroles for the homeless and make crispy treats for the students in our BMPC tutoring program. Childcare available. GabySnyder@yahoo.com.

**OPERATION HOME AND HEALING.** Tuesdays, Jan. 12 - 26, 7:00 – 8:30 p.m., Witherspoon Parlor. Three-part program for veterans and family members/partners. Registration required. info@middletoncenter.org, 610-525-0766.

**THE REPRESENTATION PROJECT FILM SERIES.** Thursdays, Jan. 14 & 21, 7:00 - 9:00 p.m., Bryn Mawr Film Institute.

- Part I, Jan. 14: “The Mask You Live In” explores cultural influences in the way boys are raised to be men in today’s society.
  - Part II, Jan. 21: “Miss Representation” exposes how mainstream media contributes to the under-representation of women in positions of power and influence in America.
- Tickets are available through The Bryn Mawr Film Institute. info@middletoncenter.org, 610-525-0766.

**HIGH SCHOOL SNOW RETREAT.** Jan. 16-18, Poconos. It’s time for a weekend away! Our winter getaway offers snow games, tubing, great meals, worship, and an opportunity to serve together on MLK Jr. Day. Cost: \$299. Deadline to register is Jan. 12. Register online at [www.bmpc.org](http://www.bmpc.org) > Calendar > Open Registrations. AmyBauer@bmpc.org, ext. 8821.

## ***Upcoming***

**INTERFAITH TU B’SHEVAT SEDER.** Fri., Jan. 22, 7:00 p.m., Gloucester Room. Gather on this rooted, creative, mystical, musical, Jewish and environmental holy day and celebrate the New Year of the Trees with a ceremonial Seder dinner. Courtenay Willcox, mcwillcox@gmail.com.

**MLK CONGREGATION-WIDE DAY OF SERVICE.** Sat., Jan. 23, 8:30 a.m., meet in the Ministries Center. Choose between projects in the BMPC Ed. Bldg. (moving furniture), weatherization in Philadelphia with Habitat for Humanity, assisting seniors in the Bryn Mawr community with ElderNet, or attending a Casserole Blitz. Register at [www.bmpc.org](http://www.bmpc.org) > Calendar > Open Registrations or CarolSchmidt@bmpc.org, ext. 8819.

## ***Save the Date***

**SUPPORT SYRIAN REFUGEES.** Sun., Jan. 24, 11:15 a.m., Congregational Hall. Our congregation continues its discernment and education regarding the sponsorship of Syrian refugee families. The Rev. Rebecca Kirkpatrick and members who have been working with Lutheran Children and Family Services will explain the logistics of refugee support and how we can help this work of hospitality and welcome. RebeccaKirkpatrick@bmpc.org, ext. 8818.

**YOUTH OUTING: PHILADELPHIA 76'ERS GAME.** Sat., Jan. 30, 5:00 p.m., Wells Fargo Center. Meet Pastor Kellen at the Wells Fargo Center for an action-packed NBA game as the Sixers take on the World Champion Golden State Warriors. Limited tickets available; \$25. Register: Amy Bauer@bmpc.org, ext. 8821.

**TWO-PIANO RECITAL.** Sun., Jan. 31, 2:00 p.m., Sanctuary. Featuring Jeffrey Brillhart and Laura Ward performing the music of Bach and Brubeck. Free-will offering. StephanieSpeakman@bmpc.org, ext. 8836.

**YOUTH SUMMER TRIPS EARLY BIRD REGISTRATION.** Last change to save \$100 is January 31. For more information about the High School Mission Trip to Peru, the Middle School Urban Plunge in NYC, or Camp Kirkwood 2016, search "Summer Camps and Mission Trips" at www.bmpc.org. AmyBauer@bmpc.org, ext. 8821.

**DEACONS' ANNUAL BLOOD DRIVE.** Mon., Feb. 1, 1:00 - 7:00 p.m., Congregational Hall. Volunteers are needed to donate blood and to assist with scheduling appointments. Bill Matthai, william.matthai@uphs.upenn.edu, 610-668-1842.

**SUPER BOWL PARTY FOR YOUTH, THEIR FAMILIES AND FRIENDS.** Sun., Feb. 7, 6:00 p.m., Pastor Kellen's manse. Enjoy great food and fellowship during the big game. RSVP to KellenSmith@bmpc.org and bring a snack to share.

## ***Caring & Sharing***

**SUPPORT OUR TUTORING PROGRAM STUDENTS.** Hats, gloves, scarves, and school supplies are needed for students from the William Dick School who attend our tutoring program. Place items in the collection bins in the Ministries Center and Ed. Bldg. through January. CarolSchmidt@bmpc.org, ext. 8819.

**SERVE WITH OUR PASTORAL CARE TEAM.** Provide rides for older adults, meals to those recuperating, prayer shawls for those in need of prayer, or visits to the homebound. LorieBenovic@bmpc.org or ext. 8833.

### **HELP FIGHT HUNGER.**

- Contribute to the white hunger envelopes in the pews to provide food for emergency food cupboards, homeless shelters, and hunger relief organizations.
- Bring non-perishable food items to worship each Sunday to help stock local emergency food cupboards.

**SHARE HOSPITAL INFORMATION.** Current privacy laws make it more difficult for our pastors to know when BMPC members have been admitted to a hospital. Please call the church office at 610-525-2821 if you or anyone you know is hospitalized.

**NEED A RIDE?** We can help you with some of your transportation needs. For rides to medical appointments call Lorie Benovic, ext 8833.

# **This Week's Calendar**

***For more information visit our website at [www.bmpc.org](http://www.bmpc.org),  
call the church office, or contact [communications@bmpc.org](mailto:communications@bmpc.org).***

## **Today, January 10, 2016**

- 8:00 a.m. Worship with Communion, Chapel  
10:00 a.m. Worship with Communion and Sanctuary Choir, Sanctuary  
The Rev. Richard Wohlschlaeger will preach.
- 7:45 a.m. Childcare for infants - age 5, Ed. Bldg. Rm. 102 (to 12:30 p.m.)  
8:45 a.m. Couples Bible Study, Ed. Bldg. Rm. 205  
Filling the Well Women's Group, Ed. Bldg. Rm. 104  
Sunday Morning Discussion Group, Conference Room  
Art @ 9, Ed. Bldg. Rm. 201  
9:00 a.m. Youth Ministry Council, Loft  
10:00 a.m. Sunday School for ages 2 - 4, Ed. Bldg.  
Grades K - 5 begin worship in the Sanctuary  
Youth Gathering (Grades 6 - 12), Gymnasium  
10:15 a.m. Sunday School for Grades K - 5, Ed. Bldg.  
10:30 a.m. Youth Grade Groups and Confirmation, Ministries Center  
11:00 a.m. Cafe in the Court  
11:15 a.m. Life Transitions Class, Witherspoon Parlor  
South Korea Choir Tour Meeting, Congregational Hall  
Tintinnabulators, Fine Arts Center

## **Monday, January 11, 2016**

- 9:30 a.m. Dance Fit, Gymnasium  
6:45 p.m. Communications Committee Meeting, Conference Room  
7:00 p.m. Peacemaking Committee Meeting, Witherspoon Parlor

## **Tuesday, January 12, 2016**

- 8:45 a.m. Y-Group Casserole Blitz, main kitchen  
9:00 a.m. RePose Yoga, Gymnasium  
10:30 a.m. Tai Chi, Gymnasium  
1:00 p.m. Dance for Parkinson's Disease, Gymnasium  
4:30 p.m. Upward Basketball Practice, Gymnasium  
6:30 p.m. Tutoring, Ed. Bldg.  
7:00 p.m. Parent Support Group for Families with Transgender Children, Middleton Center  
Operation Home and Healing for Veterans, Fullerton Room  
Session, Gloucester Room

### **Wednesday, January 13, 2016**

- 8:00 a.m. Stewardship Meeting, Conference Room
- 9:00 a.m. Walk for Life: Walk More, Live Better!; meet in main parking lot
- 9:30 a.m. Dance Fit, Gymnasium
- 10:00 a.m. Coffee Cup Bible Study, Gloucester Room  
Men's Study Group, Converse House Parlor
- 4:45 p.m. Wednesday Together Program, Sanctuary
- 5:30 p.m. Wednesday Night Dinner, Congregational Hall
- 6:00 p.m. Youth Chorale, Fine Arts Center
- 6:30 p.m. Upward Basketball Practice, Gymnasium
- 7:00 p.m. Student Serve, Loft  
Middleton Center Council Meeting, Gloucester Room

### **Thursday, January 14, 2016**

- 10:00 a.m. Artists' Gathering, Gloucester Room  
HC Project, Fullerton Room
- 11:30 a.m. Jr. League Luncheon & Food Drive, Congregational Hall
- 7:00 p.m. "The Mask You Live In," Bryn Mawr Film Institute  
Sanctuary Choir, Fine Arts Center
- 7:30 p.m. Boy Scouts Troop 19, Gymnasium

### **Friday, January 15, 2016**

- 9:30 a.m. Dance Fit, Gymnasium
- 4:00 p.m. Children's Spanish Class, Ed. Bldg.

### **Saturday, January 16, 2016**

- 7:00 a.m. Saturday Morning Men's Study Group, Converse House Parlor
- 8:00 a.m. AGO January Jumpstart Organ Conference, BMPC Campus
- 12:00 p.m. High School Snow Retreat, meet in back parking lot

### **Sunday, January 17, 2016**

- 8:00 a.m. Worship with Communion, Chapel
- 10:00 a.m. Worship with Sanctuary Choir, Sanctuary  
The Rev. Dr. Agnes W. Norfleet will preach.  
Holiday Worship Together for grades 6 - 12.  
Sunday School for age 2 - grade 5.

## ***Worship Staff***

---

**Agnes W. Norfleet**, Pastor

**Rebecca Kirkpatrick**, Associate Pastor for Adult Education and Mission

**Rachel Pedersen**, Associate Pastor for Children and Family Ministry

**Kellen A. Smith**, Associate Pastor for Youth, Their Families and College Ministries

**Richard Wohlschlaeger**, Interim Associate Pastor for Senior Adults & Pastoral Care

**Jeffrey Brillhart**, Director of Music and Fine Arts

**Edward L. Landin**, Assistant Director of Music

## ***Contact Information***

---

### **Bryn Mawr Presbyterian Church**

625 Montgomery Avenue, Bryn Mawr, PA 19010

(P) 610-525-2821 • (F) 610-525-9476

[www.bmpc.org](http://www.bmpc.org) (for program information, calendar, and staff directory)

[Facebook.com/BrynMawrPC](https://www.facebook.com/BrynMawrPC) • [Instagram.com/ Bryn Mawr PC](https://www.instagram.com/BrynMawrPC)

24/7 Answering Service for Pastoral Emergencies: 610-525-2821

Main Line Adult Day Center: 610-527-4220

The Middleton Center: 610-525-0766 • [JoyceKrajian@bmpc.org](mailto:JoyceKrajian@bmpc.org)

The Weekday School (Preschool): 610-525-2821, ext. 8840



# ***Bryn Mawr Presbyterian Church***

---

January 10, 2016  
10:00 a.m., Sanctuary  
Baptism of the Lord

# **Welcome to BMPC**

*Lord, Your word is a lamp to my feet and a light to my path.*

**NEW HERE?** We invite you to visit the information alcove near the main Sanctuary entrance to learn more about us, and join us for refreshments in the Ministries Center Court following worship. You are welcome to participate according to your interests and we hope you will return often. Questions? Contact DonnaBarrickman@bmpc.org, ext. 8809.

**TO ASSIST YOU DURING WORSHIP:** Large print bulletins and hearing assistance devices are available; ask an usher. Children's bulletins with crayons may be found near the main entrance.

## **TODAY'S SCHEDULE FOR CHILDREN AND YOUTH:**

**Childcare:** infants - age 2; 7:45 a.m. - 12:30 p.m., Ed. Bldg., Rm. 102

**Children age 2 to PreK:** 10:00 a.m. classes, Ed. Bldg.

**Grades K - 5:** 10:15 a.m., classes, Ed. Bldg.

(10:00-10:15 a.m. families worship together in the Sanctuary)

*If this is your first Sunday, please accompany your child to the Ed. Bldg.*

**Grades 6 - 12:** 10:00 a.m., Youth Gathering in Gym;

10:30 a.m., Grade Groups in the Ministries Center

**GETTING CONNECTED.** Please fill out the Fellowship Register as indicated during worship to let us know that you were here, to provide or update your contact information, and to identify yourself to others in your row so that you may greet each other after worship.

**JOIN US FOR FELLOWSHIP.** Stop by the Ministries Center Court for coffee between 8:00 - 10:00 a.m. and for refreshments and fellowship after the 10:00 a.m. worship service.

*As we gather for worship, please silence your cell phone  
and prepare your heart and mind for the worship of God.*



# GATHERING OF GOD'S PEOPLE

**PRELUDE**

Adorn Yourself, O Dear Soul

J. S. Bach

**WELCOME**

Kellen A. Smith

† **CALL TO WORSHIP**

One: The voice of God resounds upon the water.

**All: The Spirit of the Lord hovers over the stream.**

One: The Son of God is named "Beloved."

**All: And all who worship shout out, "Glory!"**

One: Ascribe to the Lord majesty and strength.

**All: Let us worship God in holy splendor.**

† **HYMN 403**

Open Now Thy Gates of Beauty

UNSER HERRSCHER

**CALL TO CONFESSION**

**AND PRAYER OF CONFESSION** (*in unison*)

We are precious in your sight,

yet we often forget that we are your beloved.

We confess that our love is fickle and inconstant.

We follow selfish goals and deny that our way of life harms others  
and hurts your world.

We are sorry and we want to change.

Create in us a clean heart,

strengthen our resolve,

reconcile us one to another,

and bless us with your peace.

**ASSURANCE OF PARDON**

\*† **GLORIA PATRI** (*in unison*)

(*Hymnal 581*)

Glory be to the Father and to the Son and to the Holy Ghost; as it was in the  
beginning, is now and ever shall be, world without end. Amen, Amen.

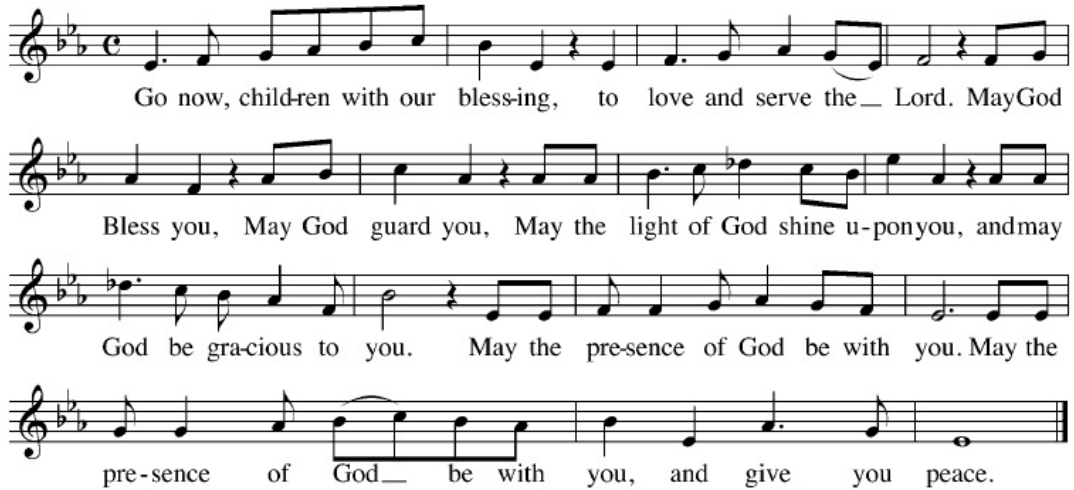
(Children are invited to come forward for the *Children's Moment*.)

## PROCLAMATION OF THE WORD

**CHILDREN'S MOMENT**

Rachel Pedersen

## SENDING HYMN Go now, Children, with our Blessing



Go now, child-ren with our blessing, to love and serve the Lord. May God  
Bless you, May God guard you, May the light of God shine u-pon you, and may  
God be gra-cious to you. May the pre-sence of God be with you. May the  
pre-sence of God be with you, and give you peace.

*During the Sending Hymn, children grades K - 3 depart for their Sunday School classes.*

**FIRST LESSON** Isaiah 43:1-7 (*p. 672 in pew Bible*) Rebecca Kirkpatrick

**ANTHEM** Shall we Gather at the River Stephen Paulus

Shall we gather at the river, where bright angels' feet have trod, With its crystal tide forever Flowing by the Throne of God. Yes we'll gather at the river, the beautiful river, Gather with the saints by the river that flows by the throne of God. Soon we'll reach the shining river, soon our pilgrimage will cease, Soon our happy hearts will quiver with the melody of peace. Yes we'll gather at the river, the beautiful river, Gather with the saints by the river that flows by the throne of God.

**SECOND LESSON** Luke 3:15-17; 21-22 (*p. 60 in pew Bible*) Richard Wohlschlaeger

**SERMON** *As One of Us* Richard Wohlschlaeger

† **HYMN** 156 Sing of God Made Manifest SALZBURG

## RESPONSE TO THE WORD

### OFFERING

**AND OFFERTORY ANTHEM** Down to the River to Pray David L. Mennicke

As I went down in the river to pray, studyin' about that good ol' way and who shall wear the robe and crown; Good Lord, show me the way! Oh sisters, let's go down, let's go down, come on down. Oh, sisters, let's go down, down in the river to pray. As I went down in the river to pray, studyin' about that good ol' way and who shall wear the starry crown; Good Lord, show me the way! Oh, brothers, let's go down, let's go down, come on down. Oh, brothers, let's go down, down in the river to pray.

*Please fill in the Fellowship Register at the end of your pew;  
pass it down your row and back again.*

† **DOXOLOGY** (*in unison*) (*Hymnal 606*)

Praise God, from whom all blessings flow; praise God, all creatures here below;  
praise God above, ye heavenly host; praise Father, Son, and Holy Ghost. Amen.

† **PRAYER OF DEDICATION** Rebecca Kirkpatrick

## **THE SACRAMENT OF THE LORD'S SUPPER**

### **INVITATION**

### **THE GREAT THANKSGIVING**

One: The Lord be with you.

**All: And also with you.**

One: Lift up your hearts.

**All: We lift them to the Lord.**

One: Let us give thanks to the Lord our God.

**All: It is right to give our thanks and praise.**

**SANCTUS** Hymn 572

### **THE LORD'S PRAYER**

Our Father who art in heaven, hallowed be thy name, thy kingdom come,  
thy will be done, on earth as it is in heaven. Give us this day our daily  
bread. And forgive us our trespasses, as we forgive those who trespass  
against us. And lead us not into temptation, but deliver us from evil. For  
thine is the kingdom, and the power, and the glory, forever. Amen.

### **COMMUNION OF THE PEOPLE**

*As the bread and cup are distributed, you may partake individually  
in personal prayer. Gluten- and casein-free bread is available in the  
small container located on each plate.*

**MUSIC AT COMMUNION** Selections from *Suite in d-minor* Marin Marais  
Peter Volpert, cello; Jeffrey Brillhart, harpsichord  
Robert Hauptfuhrer Memorial Harpsichord

### **PRAYER AFTER COMMUNION**

† **HYMN** 516 For the Bread Which You Have Broken KINGDOM

† **BENEDICTION WITH CHORAL RESPONSE** Richard Wohlschlaeger

**POSTLUDE** God With Us Olivier Messiaen

## **Worship Notes**

### **SANCTUARY FLOWERS**

are given to the glory of God in loving memory of  
James R. and Anna H. Affleck  
Walter B. and Roberta Bastow  
W. Barton Bastow

### **GREETING AND HOSTING**

Members of our Outreach Council

### **PLAYING THE CARILLON**

Dianne Heard

### **THE POSTLUDE**

“Dieu parmi nous” (God among us): “the Word was made flesh and dwelt among us. My soul doth magnify the Lord.” This final reflection, the last of the Olivier Messiaen’s nine nativity reflections, gathers everything together into a triumphant close. First comes the descent of God to earth; then a few serene bars telling of the “sweetness of union.” The music becomes increasingly impassioned (“the exulting of the soul”) until a dazzling toccata signals the Incarnation.

## **Announcements**

**OUR STEWARDSHIP JOURNEY.** If you have not yet pledged, we would love to have you become more deeply engaged in the life of the church by pledging today. Start the new year with deeper commitments: to yourself, to family, to friends and to your life here at BMPC. Pledge cards are in the pews or you may pledge online at [www.bmpc.org](http://www.bmpc.org).

**ART EXHIBIT - CRAFTS, ART, AND CULTURE OF BOTSWANA.** On view and for sale in the Ministries Center through Sun., Jan. 24. Sales support the artists. [StephanieSpeakman@bmpc.org](mailto:StephanieSpeakman@bmpc.org), ext. 8836.

**DAILY DEVOTIONALS.** At our Book Center in the Ministries Center Court you will find books for daily reading during 2016. Stop by following worship and on weekdays from 9:00 a.m. to 5:00 p.m.; the key is at the Reception Desk. Kat MacMurray, [KatRMac2@gmail.com](mailto:KatRMac2@gmail.com).

## **Today**

**COUPLES BIBLE STUDY.** Sundays, 8:45 a.m., Ed. Bldg. Room 205. Discussion of *100 Things for Your Child to Know Before Confirmation* by the Rev. Rebecca Kirkpatrick. Barbara Heaton, [barbhheaton@gmail.com](mailto:barbhheaton@gmail.com).

**FILLING THE WELL WOMEN'S GROUP.** Sundays, 8:45 a.m., Ed. Bldg. Children's Library, 1st floor. Discussion of *The New York Times* bestseller, *This I Believe*. Books available at class. Peggy Hermann, [peggyhermann@hotmail.com](mailto:peggyhermann@hotmail.com).

**SUNDAY MORNING DISCUSSION GROUP.** Sundays, 8:45 a.m., Conference Room. Led by the Rev. Dr. Paul MacMurray. *Time* magazine correspondent Elizabeth Dias asked religious leaders, writers and artists to answer 70 of Jesus' questions. Read five questions each week as daily devotions and discuss reactions on Sunday morning. Books available at class. [CarolSchmidt@bmpc.org](mailto:CarolSchmidt@bmpc.org), ext. 8819.

**LIFE TRANSITIONS.** Sundays through Jan. 24, 11:15 a.m. Witherspoon Parlor. Patricia Danzon, Spiritual Director at the Middleton Center, discusses the distinctions between "change" and "transitions" and the Biblical stories of journey and spiritual writings and practices relevant to life transitions. [CarolSchmidt@bmpc.org](mailto:CarolSchmidt@bmpc.org), ext. 8819.

**SOUTH KOREA TOUR INFO MEETING.** Today, 11:15 a.m., Congregational Hall. The Sanctuary Choir will tour South Korea in late June/early July of 2017, when we will share our music, build relationships with Presbyterian communities, and engage in meaningful outreach. Come to our meeting to learn about how you can join our Sanctuary Choir members for this experience. [StephanieSpeakman@bmpc.org](mailto:StephanieSpeakman@bmpc.org), ext. 8836.

## **This Week**

**Y-GROUP CASSEROLE BLITZ.** Tues., Jan. 12, 9:15 a.m., main kitchen. Prepare casseroles for the homeless and make crispy treats for the students in our BMPC tutoring program. Childcare available. GabySnyder@yahoo.com.

**OPERATION HOME AND HEALING.** Tuesdays, Jan. 12 - 26, 7:00 – 8:30 p.m., Witherspoon Parlor. Three-part program for veterans and family members/partners. Registration required. info@middletoncenter.org, 610-525-0766.

**THE REPRESENTATION PROJECT FILM SERIES.** Thursdays, Jan. 14 & 21, 7:00 - 9:00 p.m., Bryn Mawr Film Institute.

- Part I, Jan. 14: “The Mask You Live In” explores cultural influences in the way boys are raised to be men in today’s society.
  - Part II, Jan. 21: “Miss Representation” exposes how mainstream media contributes to the under-representation of women in positions of power and influence in America.
- Tickets are available through The Bryn Mawr Film Institute. info@middletoncenter.org, 610-525-0766.

**HIGH SCHOOL SNOW RETREAT.** Jan. 16-18, Poconos. It’s time for a weekend away! Our winter getaway offers snow games, tubing, great meals, worship, and an opportunity to serve together on MLK Jr. Day. Cost: \$299. Deadline to register is Jan. 12. Register online at [www.bmpc.org](http://www.bmpc.org) > Calendar > Open Registrations. AmyBauer@bmpc.org, ext. 8821.

## **Upcoming**

**INTERFAITH TU B’SHEVAT SEDER.** Fri., Jan. 22, 7:00 p.m., Gloucester Room. Gather on this rooted, creative, mystical, musical, Jewish and environmental holy day and celebrate the New Year of the Trees with a ceremonial Seder dinner. Courtenay Willcox, mcwillcox@gmail.com.

**MLK CONGREGATION-WIDE DAY OF SERVICE.** Sat., Jan. 23, 8:30 a.m., meet in the Ministries Center. Choose between projects in the BMPC Ed. Bldg. (moving furniture), weatherization in Philadelphia with Habitat for Humanity, assisting seniors in the Bryn Mawr community with ElderNet, or attending a Casserole Blitz. Register at [www.bmpc.org](http://www.bmpc.org) > Calendar > Open Registrations or CarolSchmidt@bmpc.org, ext. 8819.

## **Save the Date**

**SUPPORT SYRIAN REFUGEES.** Sun., Jan. 24, 11:15 a.m., Congregational Hall. Our congregation continues its discernment and education regarding the sponsorship of Syrian refugee families. The Rev. Rebecca Kirkpatrick and members who have been working with Lutheran Children and Family Services will explain the logistics of refugee support and how we can help this work of hospitality and welcome. RebeccaKirkpatrick@bmpc.org, ext. 8818.

**YOUTH OUTING: PHILADELPHIA 76'ERS GAME.** Sat., Jan. 30, 5:00 p.m., Wells Fargo Center. Meet Pastor Kellen at the Wells Fargo Center for an action-packed NBA game as the Sixers take on the World Champion Golden State Warriors. Limited tickets available; \$25. Register: Amy Bauer@bmpc.org, ext. 8821.

**TWO-PIANO RECITAL.** Sun., Jan. 31, 2:00 p.m., Sanctuary. Featuring Jeffrey Brillhart and Laura Ward performing the music of Bach and Brubeck. Free-will offering. StephanieSpeakman@bmpc.org, ext. 8836.

**YOUTH SUMMER TRIPS EARLY BIRD REGISTRATION.** Last change to save \$100 is January 31. For more information about the High School Mission Trip to Peru, the Middle School Urban Plunge in NYC, or Camp Kirkwood 2016, search "Summer Camps and Mission Trips" at www.bmpc.org. AmyBauer@bmpc.org, ext. 8821.

**DEACONS' ANNUAL BLOOD DRIVE.** Mon., Feb. 1, 1:00 - 7:00 p.m., Congregational Hall. Volunteers are needed to donate blood and to assist with scheduling appointments. Bill Matthai, william.matthai@uphs.upenn.edu, 610-668-1842.

**SUPER BOWL PARTY FOR YOUTH, THEIR FAMILIES AND FRIENDS.** Sun., Feb. 7, 6:00 p.m., Pastor Kellen's manse. Enjoy great food and fellowship during the big game. RSVP to KellenSmith@bmpc.org and bring a snack to share.

## ***Caring & Sharing***

**SUPPORT OUR TUTORING PROGRAM STUDENTS.** Hats, gloves, scarves, and school supplies are needed for students from the William Dick School who attend our tutoring program. Place items in the collection bins in the Ministries Center and Ed. Bldg. through January. CarolSchmidt@bmpc.org, ext. 8819.

**SERVE WITH OUR PASTORAL CARE TEAM.** Provide rides for older adults, meals to those recuperating, prayer shawls for those in need of prayer, or visits to the homebound. LorieBenovic@bmpc.org or ext. 8833.

### **HELP FIGHT HUNGER.**

- Contribute to the white hunger envelopes in the pews to provide food for emergency food cupboards, homeless shelters, and hunger relief organizations.
- Bring non-perishable food items to worship each Sunday to help stock local emergency food cupboards.

**SHARE HOSPITAL INFORMATION.** Current privacy laws make it more difficult for our pastors to know when BMPC members have been admitted to a hospital. Please call the church office at 610-525-2821 if you or anyone you know is hospitalized.

**NEED A RIDE?** We can help you with some of your transportation needs. For rides to medical appointments call Lorie Benovic, ext 8833.

# **This Week's Calendar**

***For more information visit our website at [www.bmpc.org](http://www.bmpc.org),  
call the church office, or contact [communications@bmpc.org](mailto:communications@bmpc.org).***

## **Today, January 10, 2016**

- 8:00 a.m. Worship with Communion, Chapel  
10:00 a.m. Worship with Communion and Sanctuary Choir, Sanctuary  
The Rev. Richard Wohlschlaeger will preach.
- 7:45 a.m. Childcare for infants - age 5, Ed. Bldg. Rm. 102 (to 12:30 p.m.)  
8:45 a.m. Couples Bible Study, Ed. Bldg. Rm. 205  
Filling the Well Women's Group, Ed. Bldg. Rm. 104  
Sunday Morning Discussion Group, Conference Room  
Art @ 9, Ed. Bldg. Rm. 201  
9:00 a.m. Youth Ministry Council, Loft  
10:00 a.m. Sunday School for ages 2 - 4, Ed. Bldg.  
Grades K - 5 begin worship in the Sanctuary  
Youth Gathering (Grades 6 - 12), Gymnasium  
10:15 a.m. Sunday School for Grades K - 5, Ed. Bldg.  
10:30 a.m. Youth Grade Groups and Confirmation, Ministries Center  
11:00 a.m. Cafe in the Court  
11:15 a.m. Life Transitions Class, Witherspoon Parlor  
South Korea Choir Tour Meeting, Congregational Hall  
Tintinnabulators, Fine Arts Center

## **Monday, January 11, 2016**

- 9:30 a.m. Dance Fit, Gymnasium  
6:45 p.m. Communications Committee Meeting, Conference Room  
7:00 p.m. Peacemaking Committee Meeting, Witherspoon Parlor

## **Tuesday, January 12, 2016**

- 8:45 a.m. Y-Group Casserole Blitz, main kitchen  
9:00 a.m. RePose Yoga, Gymnasium  
10:30 a.m. Tai Chi, Gymnasium  
1:00 p.m. Dance for Parkinson's Disease, Gymnasium  
4:30 p.m. Upward Basketball Practice, Gymnasium  
6:30 p.m. Tutoring, Ed. Bldg.  
7:00 p.m. Parent Support Group for Families with Transgender Children, Middleton Center  
Operation Home and Healing for Veterans, Fullerton Room  
Session, Gloucester Room

### **Wednesday, January 13, 2016**

- 8:00 a.m. Stewardship Meeting, Conference Room
- 9:00 a.m. Walk for Life: Walk More, Live Better!; meet in main parking lot
- 9:30 a.m. Dance Fit, Gymnasium
- 10:00 a.m. Coffee Cup Bible Study, Gloucester Room  
Men's Study Group, Converse House Parlor
- 4:45 p.m. Wednesday Together Program, Sanctuary
- 5:30 p.m. Wednesday Night Dinner, Congregational Hall
- 6:00 p.m. Youth Chorale, Fine Arts Center
- 6:30 p.m. Upward Basketball Practice, Gymnasium
- 7:00 p.m. Student Serve, Loft  
Middleton Center Council Meeting, Gloucester Room

### **Thursday, January 14, 2016**

- 10:00 a.m. Artists' Gathering, Gloucester Room  
HC Project, Fullerton Room
- 11:30 a.m. Jr. League Luncheon & Food Drive, Congregational Hall
- 7:00 p.m. "The Mask You Live In," Bryn Mawr Film Institute  
Sanctuary Choir, Fine Arts Center
- 7:30 p.m. Boy Scouts Troop 19, Gymnasium

### **Friday, January 15, 2016**

- 9:30 a.m. Dance Fit, Gymnasium
- 4:00 p.m. Children's Spanish Class, Ed. Bldg.

### **Saturday, January 16, 2016**

- 7:00 a.m. Saturday Morning Men's Study Group, Converse House Parlor
- 8:00 a.m. AGO January Jumpstart Organ Conference, BMPC Campus
- 12:00 p.m. High School Snow Retreat, meet in back parking lot

### **Sunday, January 17, 2016**

- 8:00 a.m. Worship with Communion, Chapel
- 10:00 a.m. Worship with Sanctuary Choir, Sanctuary  
The Rev. Dr. Agnes W. Norfleet will preach.  
Holiday Worship Together for grades 6 - 12.  
Sunday School for age 2 - grade 5.

## ***Worship Staff***

---

**Agnes W. Norfleet**, Pastor

**Rebecca Kirkpatrick**, Associate Pastor for Adult Education and Mission

**Rachel Pedersen**, Associate Pastor for Children and Family Ministry

**Kellen A. Smith**, Associate Pastor for Youth, Their Families and College Ministries

**Richard Wohlschlaeger**, Interim Associate Pastor for Senior Adults & Pastoral Care

**Jeffrey Brillhart**, Director of Music and Fine Arts

**Edward L. Landin**, Assistant Director of Music

## ***Contact Information***

---

### **Bryn Mawr Presbyterian Church**

625 Montgomery Avenue, Bryn Mawr, PA 19010

(P) 610-525-2821 • (F) 610-525-9476

[www.bmpc.org](http://www.bmpc.org) (for program information, calendar, and staff directory)

[Facebook.com/BrynMawrPC](https://www.facebook.com/BrynMawrPC) • [Instagram.com/ Bryn Mawr PC](https://www.instagram.com/BrynMawrPC)

24/7 Answering Service for Pastoral Emergencies: 610-525-2821

Main Line Adult Day Center: 610-527-4220

The Middleton Center: 610-525-0766 • [JoyceKrajian@bmpc.org](mailto:JoyceKrajian@bmpc.org)

The Weekday School (Preschool): 610-525-2821, ext. 8840