



# ***Bryn Mawr Presbyterian Church***

---

July 30, 2017  
8:00 a.m., Chapel  
17th Sunday in Ordinary Time

# WELCOME TO BMPC

## TODAY'S SCHEDULE

### **Childcare (infant - age 5)**

7:45 a.m. - 12:30 p.m.  
Education Building, Rm. 102

### **8:00 a.m. Worship, Chapel**

### **10:00 a.m. Worship, Sanctuary**

#### **Grades 4 - 12**

Attend Worship  
10:00 a.m., Sanctuary

#### **Grades K - 3 Classes**

10:15 a.m., Education Building

#### **Artists' Reception**

11:15 a.m., Ministries Center  
Conference Room

**NEW HERE?** We are pleased that you are joining us as we worship God this morning. Information about our programs is available near the main entrance. We invite you to participate in any of our programs, ministries and mission opportunities, as they are open to all.

**JOIN US FOR FELLOWSHIP.** Stop by the Ministries Center Court for a cup of coffee between 8:00 - 10:00 a.m. and join us for Lemonade on the Lawn after the 10:00 a.m. worship service (inclement weather location: Ministries Center Court).

**TO ASSIST YOU DURING WORSHIP.** Children's bulletins with crayons may be found near the main entrance. If you are unable to come forward for Communion, please let an usher or server know, and Communion will be brought to you.

Subscribe to our BMPC eNews by adding your email address to the Fellowship Register. For additional information about today's schedule, see the calendar at the back of this bulletin.

[www.BMPC.org](http://www.BMPC.org)

# GATHERING AROUND THE WORD

## PRELUDE

## WELCOME

Rebecca Kirkpatrick

## † CALL TO WORSHIP

One: You who are thirsty, come and drink.

**All: You who are hungry, come and eat.**

One: You who are seeking, come and find sanctuary.

**All: You who are weary, come and find rest.**

One: Here the table is set and you are welcome.

**All: Let us give thanks for the Lord is Good!**

## † HYMN 610

O for a Thousand Tongues to Sing

AZMON

## CALL TO CONFESSION

### AND PRAYER OF CONFESSION *(in unison)*

Merciful God,

We come to you tired and worried, in need of healing and forgiveness.

Have compassion on us and free us from the sins that bind.

Bring new life, where we are tired and worn.

Send new love, where we have turned hard-hearted.

Offer us forgiveness, where we have wounded.

May your Spirit bring freedom, so that we might follow you with joy.

*A moment of silence for personal reflection and confession.*

## ASSURANCE OF PARDON

CONGREGATIONAL RESPONSE

We are for - giv - en. We are for - giv - en. Thanks be to  
 God. Thanks be to God. We are for - giv - en.  
 We are for - giv - en. Thanks be to God. Thanks be to God.

Music © 1995 Hal H. Hopson. All rights reserved. Reprinted under OneLicense.net #A-716211.

HEARING THE WORD

PRAYER FOR ILLUMINATION		Joanne Hanna
FIRST LESSON	Isaiah 55:1-9 (p. 685 in pew Bible)	Joanne Hanna
SECOND LESSON	Luke 9:10-17 (p. 69 in pew Bible)	Rachel Pedersen
One:	The Word of the Lord.	
All:	Thanks be to God.	
SERMON	Something to Eat	Rachel Pedersen
† HYMN 516	For the Bread Which You Have Broken	KINGDOM

# RESPONSE TO THE WORD

## THE SACRAMENT OF THE LORD'S SUPPER

Rebecca Kirkpatrick

*You are invited to come forward, using the center aisle, to partake of the Lord's Supper by intinction (dipping a piece of bread into the cup); return to your seat using the side aisle. Gluten- and casein-free elements are on the center table.*

*You are invited to bring your offering when you come forward.*

## THE INVITATION TO COMMUNION AND THE GREAT THANKSGIVING

One: The Lord be with you.

**All: And also with you.**

One: Lift up your hearts.

**All: We lift them to the Lord.**

One: Let us give thanks to the Lord our God.

**All: It is right to give our thanks and praise.**

## THE LORD'S PRAYER

Our Father who art in heaven, hallowed be thy name, thy kingdom come, thy will be done, on earth as it is in heaven. Give us this day our daily bread. And forgive us our trespasses, as we forgive those who trespass against us. And lead us not into temptation, but deliver us from evil. For thine is the kingdom, and the power, and the glory, forever. Amen.

## COMMUNION OF THE PEOPLE

### PRAYER OF DEDICATION

Rachel Pedersen

† HYMN 36

For the Fruit of All Creation

AR HYD Y NOS

† SENDING AND PASSING OF THE PEACE

One: The peace of Christ be with you.

**All: And also with you.**

## POSTLUDE

## **Worship Notes**

### **SANCTUARY FLOWERS**

Given to the glory of God

### **ASSISTING WITH COMMUNION**

Elder Joanne Hanna

### **USHERING**

Jim Losty

### **BULLETIN COVER**

*Feeding the Five Thousand*

*Our summer sermon series is based upon the gospel stories of Jesus that we teach to our youngest children, in hopes that children in worship recognize them and the child in each of us recalls the foundational biblical witness for the life of faith.*



*"I am the resurrection and the life."*

Jerene Fiechter ~ June 1, 2017

A. Carter Fergusson ~ July 21, 2017

# Today

**HYMNAL DEDICATION LIST.** The hymnal dedication list is available to view in binders in the back of the Sanctuary and the Chapel starting today. The list includes names of donors who contributed to the purchase of the *Glory to God* hymnals in 2015 as well as their dedications.

**SUMMER SUNDAY SCHOOL.** Through Aug. 20, Ed. Bldg., 10:15 a.m. Our rising kindergarteners – third graders help mission partners and learn about worship. If this is your first Sunday, please accompany your child to the Education Building.

**SUMMER CHOIR.** Through Sept. 3. All singers who can read music are invited to come to church on Sundays at 9:00 a.m. for a short rehearsal in the choir loft, then stay and sing for the 10:00 a.m. service. Summer choir is simple (one anthem and hymns), and informal (no robes). No long-term commitment; no need to sign up in advance. StephanieSpeakman@bmpc.org, ext. 8836.

## Announcements

**NEW CHANCEL LIGHTING IN SANCTUARY.** With a generous financial contribution from anonymous donors, the six-light incandescent fixtures in the balconies and on the edge of the stained-glass windows in the chancel area in the front of the Sanctuary are to be replaced with 24 new energy-efficient LED fixtures. Six of the new fixtures will provide colored light for theatrical productions. The project also includes installation of new lighting controls.

The donors wanted to provide better illumination in front of the church during worship and limited theatrical lighting when the Sanctuary is used for musical and theatrical productions. Work is expected to be finished by Fri., Aug. 11. The project will not affect worship services on Sundays.

**PRESBYTERY OF PHILADELPHIA 300TH ANNIVERSARY OFFERING.** As we join with the Presbytery of Philadelphia in celebrating our 300th anniversary, you are invited to participate in an offering to support eight longtime partners in the Presbytery who are working to aid children in Philadelphia and to disrupt the “school-to-prison pipeline.” A goal has been set by the Presbytery to raise \$300,000 to be distributed equally among Broad Street Ministry, West Kensington Ministry, The Common Place, Camp Kirkwood, Chester Eastside, John Gloucester House, Restorative Justice and Mural Arts, and Rhawnhurst Turning Point. Donations should be marked “300th Anniversary” and placed in the offering plate or sent to the church office. SarahMiciek@bmpc.org, ext. 8817.

**LAST CHANCE TO REGISTER FOR CAMP KIRKWOOD.** Extend your summer fun from Aug. 6 – 12 at Camp Kirkwood 2017 in the Poconos for sixth to rising 12th graders. New lower price of \$499. Search “Summer Camps” at [www.bmpc.org](http://www.bmpc.org) to register. AmyBauer@bmpc.org, ext. 8821.



**JOIN SANCTUARY CHOIR.** If you love to sing, we invite you to join Sanctuary Choir, a vibrant group of adults who worship God through music while serving as leaders in the church. To schedule an informal interview with Jeff Brillhart, contact StephanieSpeakman@bmpc.org, ext. 8836.

## ***This Week***

**AMERICAN RED CROSS BLOOD DRIVE.** Mon., July 31, 2:00 – 7:00 p.m., Congregational Hall. Register to donate blood by visiting [redcrossblood.org](http://redcrossblood.org). Enter the sponsor keyphrase “Bryn Mawr Pres Church” on the Red Cross website to find our drive.

## ***Caring & Sharing***

**MISSION PROJECT AT WEST KENSINGTON MINISTRY.** Aug. 7 - 11, 9:00 a.m. - 3:00 p.m. Volunteer for any increment of time or the entire time! We'll be scraping, sanding and painting the manse to make space for mission residents. Chad Pilling, [pillingcb@gmail.com](mailto:pillingcb@gmail.com), 267 566-0206.

**LEARN ABOUT OUR MISSION PARTNERS.** Both the Worldwide Ministries Committee and Outreach Committee support a number of organizations. Visit [www.bmpc.org](http://www.bmpc.org) and click on an organization's name on either the Worldwide Ministries page or Outreach page to be directed to their websites to learn more about the work of these organizations.

**HELP WITH SUMMER SUNDAY SCHOOL.** Through Aug. 20, our rising kindergarteners - third graders help mission partners and learn about worship. Sign up to lead or help on one (or more!) Sundays from 10:15 a.m. to 11:00 a.m. [MaryRichards@bmpc.org](mailto:MaryRichards@bmpc.org), ext. 8811.

**WEEKEND GROCERY COLLECTION.** Did you know that 10% of students in Lower Merion School District receive free or reduced-price lunch during the school year, indicating real need? Help us partner with Main Line Reform Temple to prepare weekend grocery bags given to local families this summer. Please bring the following donations to BMPC and place in the collection bins: instant oatmeal packs, shelf-stable milk boxes, macaroni and cheese, tuna pouches, granola bars, fruit cups, cereal. [CarolSchmidt@bmpc.org](mailto:CarolSchmidt@bmpc.org), ext. 8819.

**VOLUNTEER FOR MEMORIAL SERVICES/RECEPTIONS.** Serve as an usher or help with receptions at occasional memorial services held at our church. We will include you on emails sent whenever help is needed; volunteer when you are able. Send your contact information to [AmyBauer@bmpc.org](mailto:AmyBauer@bmpc.org), ext. 8821.

**CANNED FOOD NEEDED.** During the summer, food pantries receive fewer donations. Drop off high-protein canned goods (soups, peanut butter, stews, ravioli) in the Hunger Baskets near the Sanctuary entrance to be delivered to the pantries. [CarolSchmidt@bmpc.org](mailto:CarolSchmidt@bmpc.org), ext. 8819.



# **This Week's Calendar**

*For more information, visit our website at [www.bmpc.org](http://www.bmpc.org),  
call the church office, or contact [communications@bmpc.org](mailto:communications@bmpc.org).*

## **Today, July 30**

- 7:45 a.m. Childcare (infant - 5 years old, Ed. Bldg., Rm. 102)  
8:00 a.m. **Worship with Communion, Chapel**  
9:00 a.m. Summer Choir Rehearsal, Sanctuary Choir Loft  
10:00 a.m. **Worship with Communion and Summer Choir, Sanctuary**  
Grades K - 3 begin worship in the Sanctuary  
Worship Together Sunday for Children & Youth in grades 4 - 12  
10:15 a.m. Sunday School for grades K - 3, Ed. Bldg.  
11:00 a.m. Lemonade on the Lawn (inclement weather location: Ministries Center)  
11:15 a.m. Artists' Gathering Exhibit Reception, Conference Room

## **Monday, July 31**

- 2:00 p.m. American Red Cross Blood Drive, Congregational Hall

## **Tuesday, August 1**

- 10:30 a.m. Tai Chi, Gymnasium  
5:30 p.m. Upward Basketball (Grades K - 6), Gymnasium  
6:30 p.m. Upward Basketball (Grades 7 - 12), Gymnasium

## **Wednesday, August 2**

*No scheduled activities.*

## **Thursday, August 3**

- 10:00 a.m. Artists' Gathering, Gloucester Room

## **Friday, August 4**

*No scheduled activities.*

## **Saturday, August 5**

*No scheduled activities.*

## **Sunday, August 6**

- 8:00 a.m. **Worship with Communion, Chapel**  
10:00 a.m. **Worship with Summer Choir, Sanctuary**  
The Rev. Rebecca Kirkpatrick will preach.  
Sunday School for kindergarten - grade 3.

**ARTISTS' GATHERING EXHIBITION.** The walls of the Conference Room and Witherspoon Parlor are covered with artworks by a community of local artists who gather every Thursday in Gloucester Room and turn it into a studio. They are pleased to share their creations with the congregation during the summer months for pleasure and for purchase. Join us today at 11:15 a.m. for a reception to meet the artists and view their works. Light refreshments will be served in the Ministries Center Conference Room. If you would like to join the Artists' Gathering group or would like information on volunteering with our visual arts program, contact [StephanieSpeakman@bmpc.org](mailto:StephanieSpeakman@bmpc.org), ext. 8836.



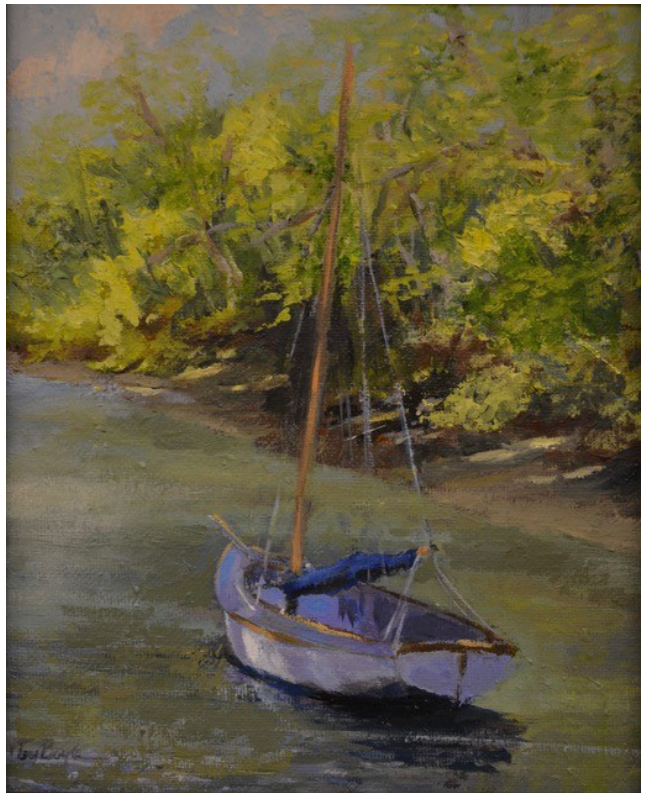
*Three Hats in the Garden*, watercolor

Mimi Barclay Johnson



*The Swing*, pastel

Patricia Riley



*Lazy River*, oil

Terry Boyle

## ***Worship Staff***

---

**Agnes W. Norfleet**, Pastor

**Rebecca Kirkpatrick**, Associate Pastor for Adult Education and Mission

**Rachel Pedersen**, Associate Pastor for Children and Family Ministry

**Franklyn C. Pottorff**, Associate Pastor for Congregational Life and Stewardship

**David B. Smith**, Interim Director, Youth Ministry

**Mary Steege**, Associate Pastor for Pastoral Care and Senior Adults

**Jeffrey Brillhart**, Director of Music and Fine Arts

**Edward L. Landin**, Assistant Director of Music

## ***Contact Information***

---

**Bryn Mawr Presbyterian Church**

625 Montgomery Avenue, Bryn Mawr, PA 19010

610-525-2821

[www.bmpc.org](http://www.bmpc.org)

[Facebook.com/BrynMawrPres](https://Facebook.com/BrynMawrPres) • [Instagram.com/BrynMawrPres](https://Instagram.com/BrynMawrPres)

24/7 Answering Service for Pastoral Emergencies: 610-525-2821

Main Line Adult Day Center: 610-527-4220

The Middleton Center: 610-525-0766 • [info@middletoncenter.org](mailto:info@middletoncenter.org)

The Weekday School (Preschool): 610-525-2821, ext. 8840





# ***Bryn Mawr Presbyterian Church***

---

July 30, 2017  
10:00 a.m., Sanctuary  
17th Sunday in Ordinary Time

# WELCOME TO BMPC

## TODAY'S SCHEDULE

### **Childcare (infant - age 5)**

7:45 a.m. - 12:30 p.m.  
Education Building, Rm. 102

### **8:00 a.m. Worship, Chapel**

### **10:00 a.m. Worship, Sanctuary**

#### **Grades 4 - 12**

Attend Worship  
10:00 a.m., Sanctuary

#### **Grades K - 3 Classes**

10:15 a.m., Education Building

#### **Artists' Reception**

11:15 a.m., Ministries Center  
Conference Room

**NEW HERE?** We are pleased that you are joining us as we worship God this morning. We invite you to stop at our information alcove to the left of the main entrance. You are welcome to participate in any of our programs, ministries and mission opportunities, as they are open to all.

**JOIN US FOR FELLOWSHIP.** Stop by the Ministries Center Court for a cup of coffee between 8:00 - 10:00 a.m. and join us for Lemonade on the Lawn after the 10:00 a.m. worship service (inclement weather location: Ministries Center Court).

**TO ASSIST YOU DURING WORSHIP.** Large print bulletins and hearing assistance devices are available; ask an usher. Children's bulletins with crayons may be found near the main entrance.

**SUNDAY SCHOOL. Grades K-3** worship with their families in the Sanctuary before being dismissed at 10:15 a.m. for Sunday School. If this is your first Sunday, please accompany your child to the Education Building. Regular classes for all ages resume on Sept. 10.

Subscribe to our BMPC eNews by adding your email address to the Fellowship Register.  
For additional information about today's schedule, see the calendar at the back of this bulletin.

[www.BMPC.org](http://www.BMPC.org)

# GATHERING OF GOD'S PEOPLE

## PRELUDE

Psalm Prelude

Edward Landin

Psalm 34: viii

O taste and see that the Lord is good: blessed is the man that trusteth in Him.

## WELCOME

Franklyn C. Pottorff

## † CALL TO WORSHIP

One: You who are thirsty, come and drink.

**All: You who are hungry, come and eat.**

One: You who are seeking, come and find sanctuary.

**All: You who are weary, come and find rest.**

One: Here the table is set and you are welcome.

**All: Let us give thanks for the Lord is Good!**

## † HYMN 610

O for a Thousand Tongues to Sing

AZMON

## CALL TO CONFESSION

### AND PRAYER OF CONFESSION *(in unison)*

Merciful God,

We come to you tired and worried, in need of healing and forgiveness.

Have compassion on us and free us from the sins that bind.

Bring new life, where we are tired and worn.

Send new love, where we have turned hard-hearted.

Offer us forgiveness, where we have wounded.

May your Spirit bring freedom, so that we might follow you with joy.

*A moment of silence for personal reflection and confession.*

## ASSURANCE OF PARDON

## † GLORIA PATRI *(in unison)*

Hymn 581

Glory be to the Father and to the Son and to the Holy Ghost; as it was in the beginning, is now and ever shall be, world without end. Amen, amen.

*Children are invited to come forward for the Children's Moment.*



# PROCLAMATION OF THE WORD

## CHILDREN'S MOMENT

Rebecca Kirkpatrick

## SENDING HYMN      Go now, Children, with Our Blessing

*During the Sending Hymn, children K - Grade 3 depart for their Sunday School classes.*



Go now, children with our blessing, to love and serve the Lord. May God  
Bless you, May God guard you, May the light of God shine upon you, and may  
God be gracious to you. May the presence of God be with you. May the  
presence of God be with you, and give you peace.

## FIRST LESSON      Isaiah 55:1-9 (p. 685 in pew Bible)

Franklyn C. Pottorff

## SECOND LESSON      Luke 9:10-17 (p. 69 in pew Bible)

Rachel Pedersen

One: The Word of the Lord.

All: **Thanks be to God.**

## SERMON

*Something to Eat*

Rachel Pedersen

† HYMN 516

For the Bread Which You Have Broken

KINGDOM

# RESPONSE TO THE WORD

## OFFERING AND OFFERTORY ANTHEM

Word Made Flesh  
Summer Choir

Gabriel Fauré

Word made Flesh, this bread bestowing by his Word his flesh to be, though our senses fail to see. Wine, his sacred Blood he makes, faith alone, the true heart wakes. Through this Sacrament may we now behold the mystery. Glory let us give, and blessing to the Father and the Son, while eternal ages run; honor, thanks, and praise address ever too his love confess; Holy Spirit, Father, Son, ever three and ever one, while eternal ages run. Amen.

*Please fill in the Fellowship Register at the end of your pew;  
pass it down your row and back again.*

## † DOXOLOGY

Hymn 606

Praise God, from whom all blessings flow; praise God, all creatures here below; praise God above, ye heavenly host; praise Father, Son, and Holy Ghost. Amen.

## † PRAYER OF DEDICATION

Rebecca Kirkpatrick

## THE SACRAMENT OF THE LORD'S SUPPER

### INVITATION

### THE GREAT THANKSGIVING

One: The Lord be with you.

**All: And also with you.**

One: Lift up your hearts.

**All: We lift them to the Lord.**

One: Let us give thanks to the Lord our God.

**All: It is right to give our thanks and praise.**

### THE LORD'S PRAYER

Our Father who art in heaven, hallowed be thy name, thy kingdom come, thy will be done, on earth as it is in heaven. Give us this day our daily bread. And forgive us our trespasses, as we forgive those who trespass against us. And lead us not into temptation, but deliver us from evil. For thine is the kingdom, and the power, and the glory, forever. Amen.

## COMMUNION OF THE PEOPLE

*As the bread and cup are distributed, you are invited to take the bread and cup and pass it to your neighbor in the pew. Gluten- and casein-free bread is available in the small container located on each plate.*

## PRAYER AFTER COMMUNION

†	<b>HYMN 36</b>	For the Fruit of All Creation	AR HYD Y NOS
†	<b>BENEDICTION WITH CHORAL RESPONSE</b>		Rachel Pedersen
	<b>POSTLUDE</b>	Offertoire sur les Grands Jeux	François Couperin

## *Worship Notes*

### **SANCTUARY FLOWERS**

Given to the glory of God

### **GREETING AND HOSTING**

The Hauptfuhrer Family

### **PLAYING THE CARILLON**

Rob Mygatt

### **GUEST SUMMER CHOIR CONDUCTOR**

Sandra Stouffer

### **BULLETIN COVER**

*Feeding the Five Thousand*

*Our summer sermon series is based upon the gospel stories of Jesus that we teach to our youngest children, in hopes that children in worship recognize them and the child in each of us recalls the foundational biblical witness for the life of faith.*



*"I am the resurrection and the life."*

Jerene Fiechter ~ June 1, 2017

A. Carter Fergusson ~ July 21, 2017

# Today

**HYMNAL DEDICATION LIST.** The hymnal dedication list is available to view in binders in the back of the Sanctuary and the Chapel starting today. The list includes names of donors who contributed to the purchase of the *Glory to God* hymnals in 2015 as well as their dedications.

**SUMMER SUNDAY SCHOOL.** Through Aug. 20, Ed. Bldg., 10:15 a.m. Our rising kindergarteners – third graders help mission partners and learn about worship. If this is your first Sunday, please accompany your child to the Education Building.

**SUMMER CHOIR.** Through Sept. 3. All singers who can read music are invited to come to church on Sundays at 9:00 a.m. for a short rehearsal in the choir loft, then stay and sing for the 10:00 a.m. service. Summer choir is simple (one anthem and hymns), and informal (no robes). No long-term commitment; no need to sign up in advance. StephanieSpeakman@bmpc.org, ext. 8836.

## Announcements

**NEW CHANCEL LIGHTING IN SANCTUARY.** With a generous financial contribution from anonymous donors, the six-light incandescent fixtures in the balconies and on the edge of the stained-glass windows in the chancel area in the front of the Sanctuary are to be replaced with 24 new energy-efficient LED fixtures. Six of the new fixtures will provide colored light for theatrical productions. The project also includes installation of new lighting controls.

The donors wanted to provide better illumination in front of the church during worship and limited theatrical lighting when the Sanctuary is used for musical and theatrical productions. Work is expected to be finished by Fri., Aug. 11. The project will not affect worship services on Sundays.

**PRESBYTERY OF PHILADELPHIA 300TH ANNIVERSARY OFFERING.** As we join with the Presbytery of Philadelphia in celebrating our 300th anniversary, you are invited to participate in an offering to support eight longtime partners in the Presbytery who are working to aid children in Philadelphia and to disrupt the “school-to-prison pipeline.” A goal has been set by the Presbytery to raise \$300,000 to be distributed equally among Broad Street Ministry, West Kensington Ministry, The Common Place, Camp Kirkwood, Chester Eastside, John Gloucester House, Restorative Justice and Mural Arts, and Rhawnhurst Turning Point. Donations should be marked “300th Anniversary” and placed in the offering plate or sent to the church office. SarahMiciek@bmpc.org, ext. 8817.

**LAST CHANCE TO REGISTER FOR CAMP KIRKWOOD.** Extend your summer fun from Aug. 6 – 12 at Camp Kirkwood 2017 in the Poconos for sixth to rising 12th graders. New lower price of \$499. Search “Summer Camps” at [www.bmpc.org](http://www.bmpc.org) to register. AmyBauer@bmpc.org, ext. 8821.

**JOIN SANCTUARY CHOIR.** If you love to sing, we invite you to join Sanctuary Choir, a vibrant group of adults who worship God through music while serving as leaders in the church. To schedule an informal interview with Jeff Brillhart, contact StephanieSpeakman@bmpc.org, ext. 8836.

## ***This Week***

**AMERICAN RED CROSS BLOOD DRIVE.** Mon., July 31, 2:00 – 7:00 p.m., Congregational Hall. Register to donate blood by visiting [redcrossblood.org](http://redcrossblood.org). Enter the sponsor keyphrase “Bryn Mawr Pres Church” on the Red Cross website to find our drive.

## ***Caring & Sharing***

**MISSION PROJECT AT WEST KENSINGTON MINISTRY.** Aug. 7 - 11, 9:00 a.m. - 3:00 p.m. Volunteer for any increment of time or the entire time! We'll be scraping, sanding and painting the manse to make space for mission residents. Chad Pilling, [pillingcb@gmail.com](mailto:pillingcb@gmail.com), 267 566-0206.

**LEARN ABOUT OUR MISSION PARTNERS.** Both the Worldwide Ministries Committee and Outreach Committee support a number of organizations. Visit [www.bmpc.org](http://www.bmpc.org) and click on an organization's name on either the Worldwide Ministries page or Outreach page to be directed to their websites to learn more about the work of these organizations.

**HELP WITH SUMMER SUNDAY SCHOOL.** Through Aug. 20, our rising kindergarteners - third graders help mission partners and learn about worship. Sign up to lead or help on one (or more!) Sundays from 10:15 a.m. to 11:00 a.m. [MaryRichards@bmpc.org](mailto:MaryRichards@bmpc.org), ext. 8811.

**WEEKEND GROCERY COLLECTION.** Did you know that 10% of students in Lower Merion School District receive free or reduced-price lunch during the school year, indicating real need? Help us partner with Main Line Reform Temple to prepare weekend grocery bags given to local families this summer. Please bring the following donations to BMPC and place in the collection bins: instant oatmeal packs, shelf-stable milk boxes, macaroni and cheese, tuna pouches, granola bars, fruit cups, cereal. [CarolSchmidt@bmpc.org](mailto:CarolSchmidt@bmpc.org), ext. 8819.

**VOLUNTEER FOR MEMORIAL SERVICES/RECEPTIONS.** Serve as an usher or help with receptions at occasional memorial services held at our church. We will include you on emails sent whenever help is needed; volunteer when you are able. Send your contact information to [AmyBauer@bmpc.org](mailto:AmyBauer@bmpc.org), ext. 8821.

**CANNED FOOD NEEDED.** During the summer, food pantries receive fewer donations. Drop off high-protein canned goods (soups, peanut butter, stews, ravioli) in the Hunger Baskets near the Sanctuary entrance to be delivered to the pantries. [CarolSchmidt@bmpc.org](mailto:CarolSchmidt@bmpc.org), ext. 8819.

# **This Week's Calendar**

*For more information, visit our website at [www.bmpc.org](http://www.bmpc.org),  
call the church office, or contact [communications@bmpc.org](mailto:communications@bmpc.org).*

## **Today, July 30**

- 7:45 a.m. Childcare (infant - 5 years old, Ed. Bldg., Rm. 102)  
8:00 a.m. **Worship with Communion, Chapel**  
9:00 a.m. Summer Choir Rehearsal, Sanctuary Choir Loft  
10:00 a.m. **Worship with Communion and Summer Choir, Sanctuary**  
Grades K - 3 begin worship in the Sanctuary  
Worship Together Sunday for Children & Youth in grades 4 - 12  
10:15 a.m. Sunday School for grades K - 3, Ed. Bldg.  
11:00 a.m. Lemonade on the Lawn (inclement weather location: Ministries Center)  
11:15 a.m. Artists' Gathering Exhibit Reception, Conference Room

## **Monday, July 31**

- 2:00 p.m. American Red Cross Blood Drive, Congregational Hall

## **Tuesday, August 1**

- 10:30 a.m. Tai Chi, Gymnasium  
5:30 p.m. Upward Basketball (Grades K - 6), Gymnasium  
6:30 p.m. Upward Basketball (Grades 7 - 12), Gymnasium

## **Wednesday, August 2**

*No scheduled activities.*

## **Thursday, August 3**

- 10:00 a.m. Artists' Gathering, Gloucester Room

## **Friday, August 4**

*No scheduled activities.*

## **Saturday, August 5**

*No scheduled activities.*

## **Sunday, August 6**

- 8:00 a.m. **Worship with Communion, Chapel**  
10:00 a.m. **Worship with Summer Choir, Sanctuary**  
The Rev. Rebecca Kirkpatrick will preach.  
Sunday School for kindergarten - grade 3.



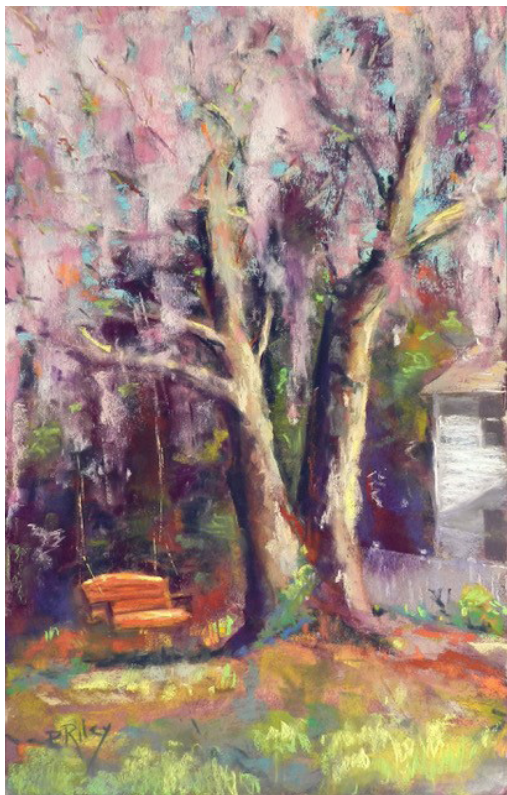
**ARTISTS' GATHERING EXHIBITION.** The walls of the Conference Room and Witherspoon Parlor are covered with artworks by a community of local artists who gather every Thursday in Gloucester Room and turn it into a studio. They are pleased to share their creations with the congregation during the summer months for pleasure and for purchase. Join us today at 11:15 a.m. for a reception to meet the artists and view their works. Light refreshments will be served in the Ministries Center Conference Room. If you would like to join the Artists' Gathering group or would like information on volunteering with our visual arts program, contact [StephanieSpeakman@bmpc.org](mailto:StephanieSpeakman@bmpc.org), ext. 8836.



*Three Hats in the Garden*, watercolor

Mimi Barclay Johnson





*The Swing*, pastel

Patricia Riley



*Lazy River*, oil

Terry Boyle

## ***Worship Staff***

---

**Agnes W. Norfleet**, Pastor

**Rebecca Kirkpatrick**, Associate Pastor for Adult Education and Mission

**Rachel Pedersen**, Associate Pastor for Children and Family Ministry

**Franklyn C. Pottorff**, Associate Pastor for Congregational Life and Stewardship

**David B. Smith**, Interim Director, Youth Ministry

**Mary Steege**, Associate Pastor for Pastoral Care and Senior Adults

**Jeffrey Brillhart**, Director of Music and Fine Arts

**Edward L. Landin**, Assistant Director of Music

## ***Contact Information***

---

### **Bryn Mawr Presbyterian Church**

625 Montgomery Avenue, Bryn Mawr, PA 19010

610-525-2821

[www.bmpc.org](http://www.bmpc.org)

[Facebook.com/BrynMawrPres](https://Facebook.com/BrynMawrPres) • [Instagram.com/BrynMawrPres](https://Instagram.com/BrynMawrPres)

24/7 Answering Service for Pastoral Emergencies: 610-525-2821

Main Line Adult Day Center: 610-527-4220

The Middleton Center: 610-525-0766 • [info@middletoncenter.org](mailto:info@middletoncenter.org)

The Weekday School (Preschool): 610-525-2821, ext. 8840