

Bryn Mawr Presbyterian Church

April 22, 2018
8:00 a.m., Chapel
4th Sunday of Easter

WELCOME TO BMPC

TODAY'S SCHEDULE

Childcare (infant - age 5)

7:45 a.m. - 12:30 p.m.
Education Building, Rm. 102

8:00 a.m. Worship, Chapel

Art @ 9

Age 3 - Grade 5
8:45 a.m., Ed. Bldg., Rm. 201

Filling the Well

Women's Study
8:45 a.m., Ed. Bldg., Rm. 104

Sunday Morning Discussion Group

Adult Study
8:45 a.m., Conference Room

10:00 Worship, Sanctuary

Sunday School, Adult Education
See calendar for a complete schedule.

Choir Concert: *Missa Gaia*

4:00 p.m., Sanctuary

NEW HERE? We are pleased that you are joining us as we worship God this morning. Information about our programs is available near the main entrance. We invite you to participate in any of our programs, ministries and mission opportunities, as they are open to all.

JOIN US FOR FELLOWSHIP. Stop by the Ministries Center Court for a cup of coffee between 8:00 - 10:00 a.m. and for refreshments and fellowship after the 10:00 a.m. worship service. Families with young children are invited to gather for refreshments in the Education Building Lobby after Sunday School.

TO ASSIST YOU DURING WORSHIP. Children's bulletins with crayons may be found near the main entrance. If you are unable to come forward for Communion, please let an usher or server know, and Communion will be brought to you.

Subscribe to our BMPC eNews by adding your email address to the Fellowship Register.
For additional information about today's schedule, see the calendar at the back of this bulletin.

www.BMPC.org

GATHERING AROUND THE WORD

PRELUDE

WELCOME

Mary Steege

† CALL TO WORSHIP

One: The heavens declare the glory of God,
And the firmament shows forth the work of God's hands.

**All: One day tells its tale to another,
And one night imparts knowledge to another.**

One: Although they have no words or language,
And their voices are not heard,

**All: Their sound has gone out into all lands,
And their message to the ends of the world.**

One: Let us worship God with hymns of praise.

† HYMN 32

I Sing the Mighty Power of God

ELLACOMBE

CALL TO CONFESSION

AND PRAYER OF CONFESSION (*in unison*)

Creator God, we are residents of your planet Earth in need of confession.
Attune our spirits that we may hear the harmonies you intend for the creation,
and help us bow before your power that we may face our own complicity
in the destruction of your goodness.

You have made us just a little lower than the angels,
and given us a job to care for your creation,
and yet we have failed to be good stewards.

We use more resources than we should;
we wage war on people and vast landscapes;
we neglect fragile habitats and pollute the land and air and water.

Forgive us and heal us. Restore us to a proper role
in preserving this fragile world entrusted to our care. Amen.

A moment of silence for personal reflection and confession.

ASSURANCE OF PARDON

CONGREGATIONAL RESPONSE

Hear the good news of sal - va - tion: Je - sus died to show God's love. Such great
kind - ness! Such great mer - cy! Come to us from heav'n a - bove. Je - sus -
Christ, how much I love - you! Je - sus Christ, you save from sin! How I
love you! Look up - on me. Love me still and cleanse with - in.

English Trans. Metrical Version © 1989 Jane Parker Huber (admin. Westminster John Knox Press.)
All rights reserved. Reprinted under OneLicense.net #A-716211..

HEARING THE WORD

PRAYER FOR ILLUMINATION		Keith Brinks
FIRST LESSON	Psalm 8 (p. 492 in pew Bible)	Keith Brinks
SECOND LESSON	Genesis 1:24-2:3 (p. 1 in pew Bible)	Agnes W. Norfleet
One:	The Word of the Lord.	
All:	Thanks be to God.	
SERMON	It Was Very Good	Agnes W. Norfleet
† HYMN 22	God of the Sparrow	ROEDER

RESPONSE TO THE WORD

THE SACRAMENT OF THE LORD'S SUPPER

Mary Steege

You are invited to come forward, using the center aisle, to partake of the Lord's Supper by intinction (dipping a piece of bread into the cup); return to your seat using the side aisle. Gluten- and casein-free elements are on the center table.

You are invited to bring your offering when you come forward.

THE INVITATION TO COMMUNION AND THE GREAT THANKSGIVING

One: The Lord be with you.

All: And also with you.

One: Lift up your hearts.

All: We lift them to the Lord.

One: Let us give thanks to the Lord our God.

All: It is right to give our thanks and praise.

THE LORD'S PRAYER

Our Father who art in heaven, hallowed be thy name, thy kingdom come, thy will be done, on earth as it is in heaven. Give us this day our daily bread. And forgive us our trespasses, as we forgive those who trespass against us. And lead us not into temptation, but deliver us from evil. For thine is the kingdom, and the power, and the glory, forever. Amen.

COMMUNION OF THE PEOPLE

PRAYER OF DEDICATION

Agnes W. Norfleet

† **HYMN 23** God, You Spin the Whirling Planets sung to AUSTRIAN HYMN, 81

† **SENDING AND PASSING OF THE PEACE**

One: The peace of Christ be with you.

All: And also with you.

POSTLUDE

Worship Notes

SANCTUARY FLOWERS

Given to the glory of God and in loving memory of
George “Skip” Hollingshead

CHAPEL GARDEN FLOWERS

Given to the glory of God and in loving memory of
Jennette D. & H. Logan Lawrence

ASSISTING WITH COMMUNION

Elder Keith Brinks

BULLETIN COVER

Morning Has Broken © 2010 James Fissel | Eyekons

Announcements

TRIP TO SCOTLAND (APRIL 30 - MAY 8, 2019). In response to interest in the Rev. Dr. Agnes W. Norfleet's sermon series on the theological tenets of the Reformation, she invites you to join her on a trip to Scotland to explore the history of our denomination. Enjoy scenery, cities, and deepening friendships with fellow travelers on this tour of Scotland, guided by the Rev. James Wallace. Brochures are available in the Ministries Center and online. Register by May 27 for early-bird pricing. MonicaDevane@bmpc.org.

ART EXHIBIT: VALERIE CRAIG. On view in the Ministries Center through Sun., May 13. Valerie Craig of St. Davids is a church member and also a captivating painter of color and light whose impressionistic works have won awards both locally and abroad.

SOULS SHOT EXHIBIT. Wyndmoor artist Laura Madeleine has co-curated this art exhibit that tells the stories of gun violence victims. Installation begins on Mon., April 30, on the ramp leading to the second floor and balcony of the Ministries Center.

VACATION BIBLE CAMP. Mon., June 18 - Fri., June 22, BMPC Campus. VBC begins with a kick-off on Sun., June 17. This year we explore creation: "In the Beginning..." Registration is open now through June 1. Register online at www.bmpc.org > Calendar > Open Registrations. Calling all volunteers! MaryRichards@bmpc.org.

YOUTH SUMMER TRIPS. High School Mission Trip to Mexico: July 22-28, for rising ninth graders to graduated seniors, \$1,300. Middle School Mission Trip to New York City: July 8-12, for rising sixth to rising eighth graders, \$299. Camp Kirkwood: Aug. 5-11, for rising sixth to rising 12th graders, \$499. Register online at www.bmpc.org > Calendar > Open Registrations. Scholarships available. AmyBauer@bmpc.org.

This Sunday

JUSTICE AND GERRYMANDERING: FAITH PERSPECTIVES ON REDISTRICTING REFORM. 11:15 a.m., Witherspoon Parlor. Carol Kuniholm from Fair Districts PA and Brian Gordon from Concerned Citizens for Democracy discuss election reform issues and why this bipartisan issue relates to people of faith and larger matters of justice. CarolSchmidt@bmpc.org.

CHOIR CONCERT: MISSA GAIA. 4:00 p.m., Sanctuary. *Missa Gaia* (Earth Mass) features the Sanctuary Choir, Singing for Life, Youth Chorale, and Children's Choir, along with jazz musicians, a haunting audio soundtrack of animal song, and a dazzling video projected above the choir. Tickets: \$20 for adults, \$5 for students; purchase online at www.bmpc.org or at the door. StephanieSpeakman@bmpc.org.

This Week

PERSPECTIVES IN MUSIC. Mon., April 23, 1:30 p.m., Fine Arts Center. Harold Evans classical and jazz pianist performs. No charge. Refreshments and fellowship. DeAnn Clancy, 610-525-8347 or deannclancy@hotmail.com.

LOOK AND SEE: A PORTRAIT OF WENDELL BERRY. Wed., April 25, 7:00 p.m., Bryn Mawr Film Institute. The final film in the Environmental Justice Committee's Green on Screen series is the story of Wendell Berry's return home to Henry County, Ky. The Rev. Dr. Gilson Waldkoenig from United Lutheran Seminary leads the discussion following the film. Courtenay Willcox, mcwillcox@gmail.com.

THEOLOGY FOR BEGINNERS. Thurs., April 26, 7:00 p.m., Gloucester Room. The Rev. Rebecca Kirkpatrick leads this class exploring what Christians believe about the Bible, God, Jesus, the Holy Spirit, Sin, the Church, and more. Anita Iyengar, aciyengar@gmail.com.

A MATTER OF BALANCE PROGRAM. Fridays, April 27 - June 15, 10:00 a.m. - noon, Gloucester Room. This free program provides practical strategies to manage falls and increase activity levels. Registration required; call 1-866-CALL-MLH.

MISSION SUMMIT. Sat., April 28, 9:00 a.m., Congregational Hall. Our annual Mission Summit is guided by Broad Street Ministry and the Mission Council. Join us to celebrate the stories we have told, the stories of service we have created, and commit to how we tell our story of mission in the future. CarolSchmidt@bmpc.org.

YOUNG ADULT BRUNCH. Sat., April 28, 10:00 - 11:30 a.m., the Rev. Franklyn C. Pottorff's Manse. All young adults (ages 22-40) are invited for brunch! Childcare in the Ed. Bldg. is available upon request three days prior to the event by emailing childcare@bmpc.org. Register: FranklynPottorff@bmpc.org.

Next Sunday

ONE BOOK ONE CHURCH. Sun., April 29, 11:15 a.m. and 1:00 p.m., Congregational Hall. At 11:15 a.m., Debby Irving, author of *Waking Up White*, presents "I'm a Good Person! Isn't That Enough?" This presentation includes a light brunch. At 1:00 p.m., Debby leads an interactive workshop on how we interpret patterns of privilege in our communities. Books available in the Book Center for \$5. CarolSchmidt@bmpc.org.

Upcoming

Y-GROUP BOOK CLUB. Tues., April 30, 7:30 p.m., Converse House Parlor. Closing discussion *Of Mess and Moxie: Wrangling Delight Out of This Wild and Glorious Life*. Colleen Bertrand, ckbertrand@icloud.com.

HORIZONS BIBLE STUDY. Wed., May 2, 10:30 a.m., Rosemont Presbyterian Village Ballroom. The Rev. Mary Steege leads our study of *Cloud of Witnesses: The Community of Christ in Hebrews* by Melissa Bane Sevier, Chapter 8. Joyce Malott, okf405@gmail.com.

MAIN LINE GUN VIOLENCE AWARENESS EVENT. Sun., May 6, 4:00 p.m. Meet at Bethel AME Church, 50 South Merion Ave., Bryn Mawr, for an educational forum and call to action. “Witness Walk” through Bryn Mawr to BMPC begins at 4:30 p.m. At 5:00 p.m. a remembrance service at the “Memorial to the Lost” T-shirt display is held on our front lawn. Refreshments provided. CarolSchmidt@bmpc.org.

ANNUAL MEETING OF THE CONGREGATION. Sun., May 6, following the 10:00 a.m. worship service. BeckyHoy@bmpc.org.

CONFIRMATION EXPO. Sun., May 13, 11:00 a.m., Gymnasium. All are invited to view projects presented by the Confirmands. AmyBauer@bmpc.org.

MURAL ARTS TROLLEY TOUR. Tues., May 15. Meet in the back parking lot at 8:45 a.m. Bus departs at 9:00 a.m. sharp. Tour the World’s Largest Outdoor Art Gallery and look into the heart and soul of the City of Brotherly Love. Cost: \$35. Register online by Tues., May 1, at www.bmpc.org > Calendar > Open Registrations or mail your check to BMPC, attention Amy Bauer, to secure your reservation. AmyBauer@bmpc.org.

CONFIRMATION SUNDAY. Pentacost Sunday, May 20. Following an 8:30 a.m. breakfast in Congregational Hall with their families, Confirmands are recognized during the 10:00 a.m. worship service. AmyBauer@bmpc.org.

HEALTHY STEPS FOR OLDER ADULTS. Mon., May 21 & Wed., May 23, 1:00 - 4:30 p.m., Gloucester Room. Do you have concerns about falling? Healthy Steps for Older Adults is a fall risk-awareness program for individuals 50 years of age or older. Participants must attend both workshops. Free. Register with CarolCherry@bmpc.org.

Caring & Sharing

COLLECTION FOR BROAD STREET MINISTRY. BSM is experiencing a dire need for men’s shoes and pants (no women’s clothing). Place in collection bins in the Ministries Center or Education Building.

INFANT FORMULA AND BABY FOOD COLLECTION. May 6 - May 20. Collection to be distributed to area food shelters. Donations may be placed in bins in the Ministries Center and Education Building.

CALLING ALL GOLFERS. Mon., June 18, 12:00 p.m. lunch and registration, 1:30 p.m. shotgun start, Jeffersonville Golf Club. This is the inaugural WKM Golf Outing to benefit West Kensington Ministries. Donation: \$150 per player includes lunch, green and cart fees, prizes, post tournament reception. Register: www.westkensingtonministry.com and click on “Golf Outing.” Chad Pilling, pillingcb@gmail.com, or Bill Adelhelm, adelhelmw@comcast.net.

BATTERY RECYCLING. Our Environmental Justice Committee offers battery recycling to BMPC members. Look for the container behind the Reception Desk in the Ministries Center. All household batteries accepted. Courtenay Willcox, mcwillcox@gmail.com.

This Week's Calendar

*For more information, visit our website at www.bmpc.org,
call the church office, or contact communications@bmpc.org.*

Today, April 22

- 7:45 a.m. Childcare, Ed. Bldg., Rm. 102
8:00 a.m. **Worship with Communion, Chapel**
8:45 a.m. Filling the Well (for women), Ed. Bldg., Rm. 104
Sunday Morning Discussion Group, Conference Room
Art @ 9, Ed. Bldg., Rm. 201
10:00 a.m. **Worship with Sanctuary Choir, Sanctuary**
Sunday School for age 2 - PreK, Ed. Bldg.
Grades K - 4 begin worship in the Sanctuary
Youth Gathering (Grades 5 - 12), Gymnasium
10:15 a.m. Sunday School for Grades K - 4, Ed. Bldg.
10:30 a.m. Middle School Connections Group (Grades 5 - 7), Loft
Confirmation (Grade 8) Connections Group, Gloucester Room
Grades 9 - 10 Connections Groups, Converse House Parlor
Grades 11 - 12 Connections Groups, Fullerton Room
11:00 a.m. Fellowship for Families, Ed. Bldg. Lobby
Café in the Court, Ministries Center
11:15 a.m. Hunger Committee Liaison Brunch, Congregational Hall
Justice and Gerrymandering, Witherspoon Parlor
12:15 p.m. Carillon Lessons, Fine Arts Center
4:00 p.m. Choir Concert: *Missa Gaia*, Sanctuary

Monday, April 23

- 1:30 p.m. Perspectives in Music, Fine Arts Center
3:30 p.m. Senior Adult Council Meeting, Fullerton Room
7:00 p.m. APNC Meeting, Fullerton Room

Tuesday, April 24

- 9:00 a.m. RePose Yoga, Gymnasium
10:30 a.m. Tai Chi, Gymnasium
1:00 p.m. Dance for Parkinson's Disease, Gymnasium
2:00 p.m. Parkinson's Disease Support Group, Gloucester Room & Witherspoon Parlor
6:30 p.m. Tutoring, Ed. Bldg.

Wednesday, April 25

- 10:00 a.m. Women's Coffee Cup Bible Study, Gloucester Room
Men's Study Group, Converse House Parlor
4:45 p.m. "Wednesdays Together" End-of-Year Party, Fine Arts Center
5:30 p.m. Wednesday Night Dinner, Congregational Hall
6:00 p.m. Youth Chorale End-Of-Year Party, Fine Arts Center
7:00 p.m. Student Serve, Loft
"Green on Screen," Bryn Mawr Film Institute

Thursday, April 26

- 8:30 a.m. Laurel House Meeting, Gloucester Room
10:00 a.m. Artists' Gathering, Gloucester Room
11:00 a.m. Senior Exercise Class, Gymnasium
11:30 a.m. Presby's Inspired Life Clergy Circle, Congregational Hall
7:00 p.m. Sanctuary Choir, Fine Arts Center
Theology for Beginners, Gloucester Room
Boy Scout Troop 19, Gymnasium

Friday, April 27

- 8:00 a.m. Foundation Investment Committee Meeting, Conference Room
10:00 a.m. A Matter of Balance, Witherspoon Parlor
4:00 p.m. Children's Spanish Class, Ed. Bldg.

Saturday, April 28

- 7:00 a.m. Saturday Morning Men's Group, Converse House Parlor
9:00 a.m. Mission Summit, Congregational Hall
10:00 a.m. Community Orchestra Rehearsal, Fine Arts Center
Bereavement Group, Fullerton Room & Middleton Center
Young Adult Brunch, Pastor Frank's Manse

Sunday, April 29

- 8:00 a.m. **Worship with Communion, Chapel**
10:00 a.m. **Worship with Sanctuary Choir, Sanctuary**
The Rev. Dr. Agnes W. Norfleet will preach.
Sunday School for ages 2 - Pre K.
Fifth Sunday Service for Grades 1 - 12.

Worship Staff

Agnes W. Norfleet, Pastor

Rebecca Kirkpatrick, Associate Pastor for Adult Education & Mission

Rachel Pedersen, Associate Pastor for Children & Family Ministry

Franklyn C. Pottorff, Associate Pastor for Congregational Life & Stewardship

David B. Smith, Interim Associate Pastor for Youth Ministry

Mary Steege, Associate Pastor for Pastoral Care & Senior Adults

Jeffrey Brillhart, Director of Music & Fine Arts

Edward L. Landin, Assistant Director of Music

Contact Information



Bryn Mawr Presbyterian Church

625 Montgomery Avenue, Bryn Mawr, PA 19010

610-525-2821

www.bmpc.org

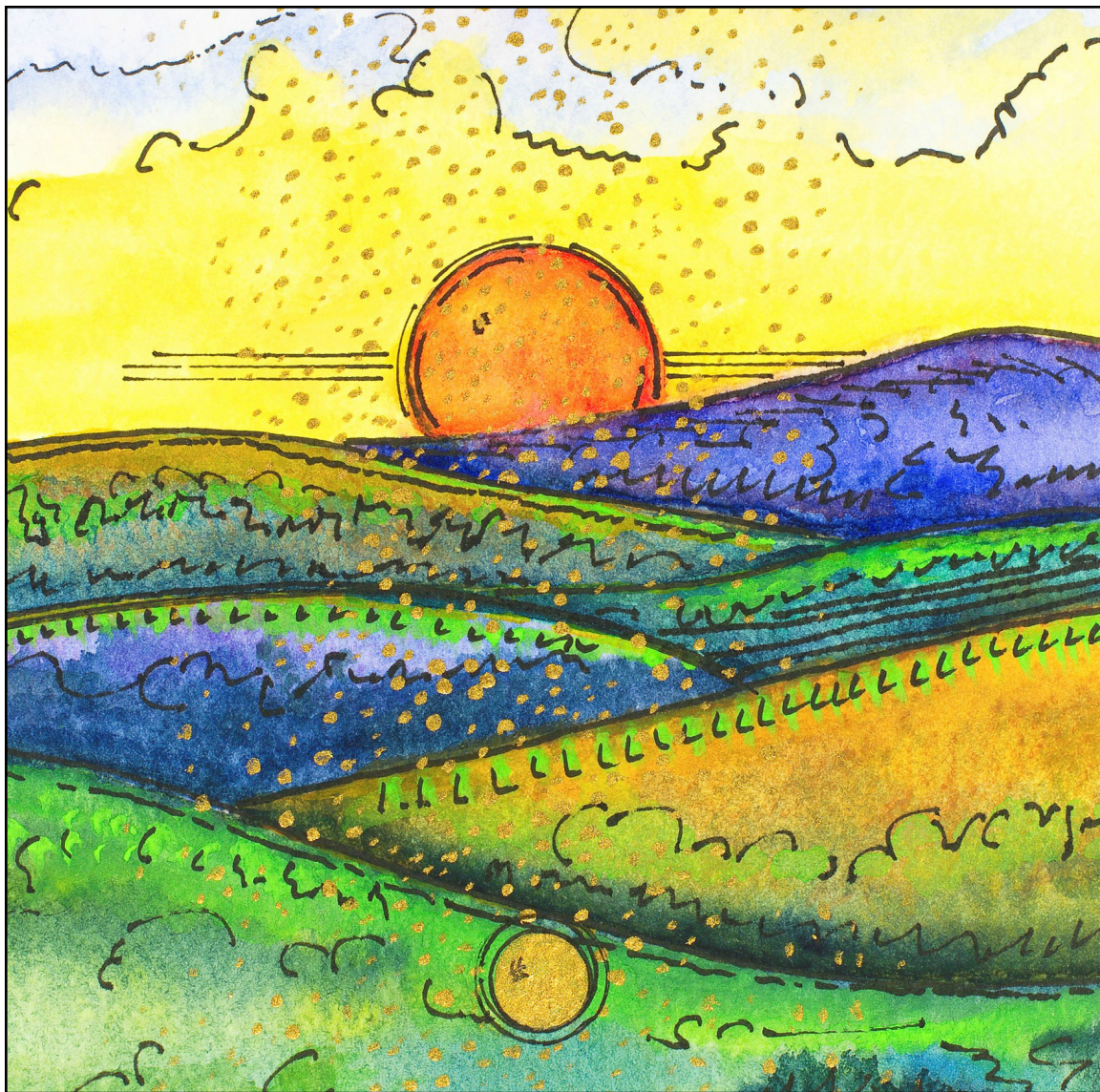
[Facebook.com/BrynMawrPres](https://www.facebook.com/BrynMawrPres) • [Instagram.com/BrynMawrPres](https://www.instagram.com/BrynMawrPres)

24/7 Answering Service for Pastoral Emergencies: 610-525-2821

Main Line Adult Day Center: 610-527-4220

The Middleton Center: 610-525-0766 • info@middletoncenter.org

The Weekday School (Preschool): 610-525-2821, ext. 8840



Bryn Mawr Presbyterian Church

April 22, 2018
10:00 a.m., Sanctuary
4th Sunday of Easter

WELCOME TO BMPC

TODAY'S SCHEDULE

Childcare (infant - age 5)

7:45 a.m. - 12:30 p.m.
Education Building, Rm. 102

10:00 a.m. Worship, Sanctuary

Age 2 - PreK Classes

10:00 a.m., Education Building

Grades K - 4 Classes

10:00 a.m., Worship in Sanctuary
10:15 a.m., Education Building

Grades 5 -12

Youth Gathering

10:00 a.m. - 10:30 a.m., Gym
Connection Groups
10:30 a.m. - 11:15 a.m.,
Ministries Center

Justice and Gerrymandering

11:15 a.m., Witherspoon Parlor

Choir Concert: *Missa Gaia*

4:00 p.m., Sanctuary

NEW HERE? We give thanks that you are joining us as we worship God this morning. We invite you to stop by and say hello to one of the pastors following the worship service. All of our programs, ministries, and opportunities for mission are open to everyone. Come join us!

JOIN US FOR FELLOWSHIP. Stop by the Ministries Center Court for a cup of coffee between 8:00 - 10:00 a.m. and for refreshments and fellowship after the 10:00 a.m. worship service. Families with young children are invited to gather for refreshments in the Education Building Lobby after Sunday School.

TO ASSIST YOU DURING WORSHIP. Large print bulletins, back pillows and hearing assistance devices are available; ask an usher. Children's bulletins with crayons may be found near the main entrance.

SUNDAY SCHOOL. We are pleased to offer education opportunities for all ages, listed in this bulletin. **Grades K-4** worship with their families in the Sanctuary before being dismissed to Sunday School. If this is your first Sunday, please accompany your child to the Education Building.

Subscribe to our BMPC eNews by adding your email address to the Fellowship Register. For additional information about today's schedule, see the calendar at the back of this bulletin.

www.BMPC.org

GATHERING OF GOD'S PEOPLE

PRELUDE

“Larghetto” from *Sonata for Organ*

Vincent Persichetti

WELCOME

Rachel Pedersen

† CALL TO WORSHIP

One: The heavens declare the glory of God,
And the firmament shows forth the work of God's hands.

**All: One day tells its tale to another,
And one night imparts knowledge to another.**

One: Although they have no words or language,
And their voices are not heard,

**All: Their sound has gone out into all lands,
And their message to the ends of the world.**

One: Let us worship God with hymns of praise.

† HYMN 32

I Sing the Mighty Power of God

ELLACOMBE

CALL TO CONFESSION

AND PRAYER OF CONFESSION (*in unison*)

Creator God, we are residents of your planet Earth in need of confession.
Attune our spirits that we may hear the harmonies you intend for the creation,
and help us bow before your power that we may face our own complicity
in the destruction of your goodness.

You have made us just a little lower than the angels,
and given us a job to care for your creation,
and yet we have failed to be good stewards.

We use more resources than we should;
we wage war on people and vast landscapes;
we neglect fragile habitats and pollute the land and air and water.

Forgive us and heal us. Restore us to a proper role
in preserving this fragile world entrusted to our care. Amen.

A moment of silence for personal reflection and confession.

ASSURANCE OF PARDON

Glory be to the Father and to the Son and to the Holy Ghost; as it was in the beginning, is now and ever shall be, world without end. Amen, amen.

Children are invited to come forward for the Children's Moment.

PROCLAMATION OF THE WORD

CHILDREN'S MOMENT

Rachel Pedersen

SENDING HYMN Go now, Children, with Our Blessing

During the Sending Hymn, children K - Grade 4 depart for their Sunday School classes.



Go now, children with our blessing, to love and serve the Lord. May God
 Bless you, May God guard you, May the light of God shine upon you, and may
 God be gracious to you. May the presence of God be with you. May the
 presence of God be with you, and give you peace.

FIRST LESSON

Psalm 8 (*p. 492 in pew Bible*)

Mary Steege

ANTHEM

The 23rd Psalm
 Sanctuary Choir

Walter Granger

The Lord is my shepherd; I shall not want. He makes me lie down in green pastures: He leads me beside the still waters. He restoreth my soul: Yea, though I walk through the valley of the shadow of death, I fear no evil: for Thou art with me; Thy rod and staff they comfort me. Thou preparest a table before me in the presence of mine enemies: Thou anointest my head with oil; my cup run over. Surely goodness and mercy shall follow me all the days of my life: and I shall dwell in Thy house for ever.

SECOND LESSON

Genesis 1:24-2:3 (*p. 1 in pew Bible*)

Agnes W. Norfleet

One: The Word of the Lord.

All: **Thanks be to God.**

RESPONSE TO THE WORD

† AFFIRMATION OF FAITH (*in unison*)

Franklyn C. Pottorff

God has made humankind part of creation.
 God included human beings among the creatures he made
 and charged them to care for other living things.
 We acknowledge we are kin to the other creatures.
 We are dependent on the systems that sustain all life.
 Yet God gives us power to rule and tame,
 to order and reshape the world.
 We hold the earth in trust
 for future generations of living things.
 The Lord forbids us to plunder, foul, and destroy it.
 The Lord expects us to produce, to consume, to reproduce
 in ways that make the world's goodness available to all people
 and reflect God's love for all creatures.
 The Lord bids us use our technical skills
 for beauty, order, health, and peace.

~ A Declaration of Faith

PRAYERS OF THE PEOPLE AND THE LORD'S PRAYER

Our Father who art in heaven, hallowed be thy name, thy kingdom come, thy will be done, on earth as it is in heaven. Give us this day our daily bread. And forgive us our trespasses, as we forgive those who trespass against us. And lead us not into temptation, but deliver us from evil. For thine is the kingdom, and the power, and the glory, forever. Amen.

OFFERING AND OFFERTORY ANTHEM

"The Blue Green Hills of Earth" from *Missa Gaia*
 Sanctuary Choir

Kim Oler
 arr. Paul Halley

For the earth, forever turning, for the skies, for every sea, to our Lord we sing, returning home to our blue green hills of earth. For the mountains, hills and pastures, in their silent majesty, for all life, for all of Nature, sing we our joyful praise to Thee. For the sun, for rain and thunder, for the land that makes us free, for the stars, for all the heavens, sing we our joyful praise to Thee.

*Please fill in the Fellowship Register at the end of your pew;
pass it down your row and back again.*

- † **DOXOLOGY** Hymn 606
Praise God, from whom all blessings flow; praise God, all creatures here below;
praise God above, ye heavenly host; praise Father, Son, and Holy Ghost. Amen.
- † **PRAYER OF DEDICATION** Mary Steege
- † **HYMN 23** God, You Spin the Whirling Planets sung to AUSTRIAN HYMN, 81
- † **BENEDICTION WITH CHORAL RESPONSE** Agnes W. Norfleet
- POSTLUDE** Fanfare on Gelobt sei Gott Matthew Glandorf

Worship Notes

SANCTUARY FLOWERS

Given to the glory of God and in loving memory of
George 'Skip' Hollingshead

CHAPEL GARDEN FLOWERS

Given to the glory of God and in loving memory of
Jennette D. & H. Logan Lawrence

GREETING AND HOSTING

Members of our Environmental Justice Committee

PLAYING THE CARILLON

Rob Mygatt

BULLETIN COVER

Morning Has Broken © 2010 James Fissel | Eyekons

Announcements

TRIP TO SCOTLAND (APRIL 30 - MAY 8, 2019). In response to interest in the Rev. Dr. Agnes W. Norfleet's sermon series on the theological tenets of the Reformation, she invites you to join her on a trip to Scotland to explore the history of our denomination. Enjoy scenery, cities, and deepening friendships with fellow travelers on this tour of Scotland, guided by the Rev. James Wallace. Brochures are available in the Ministries Center and online. Register by May 27 for early-bird pricing. MonicaDevane@bmpc.org.

ART EXHIBIT: VALERIE CRAIG. On view in the Ministries Center through Sun., May 13. Valerie Craig of St. Davids is a church member and also a captivating painter of color and light whose impressionistic works have won awards both locally and abroad.

SOULS SHOT EXHIBIT. Wyndmoor artist Laura Madeleine has co-curated this art exhibit that tells the stories of gun violence victims. Installation begins on Mon., April 30, on the ramp leading to the second floor and balcony of the Ministries Center.

VACATION BIBLE CAMP. Mon., June 18 - Fri., June 22, BMPC Campus. VBC begins with a kick-off on Sun., June 17. This year we explore creation: "In the Beginning..." Registration is open now through June 1. Register online at www.bmpc.org > Calendar > Open Registrations. Calling all volunteers! MaryRichards@bmpc.org.

YOUTH SUMMER TRIPS. High School Mission Trip to Mexico: July 22-28, for rising ninth graders to graduated seniors, \$1,300. Middle School Mission Trip to New York City: July 8-12, for rising sixth to rising eighth graders, \$299. Camp Kirkwood: Aug. 5-11, for rising sixth to rising 12th graders, \$499. Register online at www.bmpc.org > Calendar > Open Registrations. Scholarships available. AmyBauer@bmpc.org.

This Sunday

JUSTICE AND GERRYMANDERING: FAITH PERSPECTIVES ON REDISTRICTING REFORM. 11:15 a.m., Witherspoon Parlor. Carol Kuniholm from Fair Districts PA and Brian Gordon from Concerned Citizens for Democracy discuss election reform issues and why this bipartisan issue relates to people of faith and larger matters of justice. CarolSchmidt@bmpc.org.

CHOIR CONCERT: *MISSA GAIA*. 4:00 p.m., Sanctuary. *Missa Gaia* (Earth Mass) features the Sanctuary Choir, Singing for Life, Youth Chorale, and Children's Choir, along with jazz musicians, a haunting audio soundtrack of animal song, and a dazzling video projected above the choir. Tickets: \$20 for adults, \$5 for students; purchase online at www.bmpc.org or at the door. StephanieSpeakman@bmpc.org.

This Week

PERSPECTIVES IN MUSIC. Mon., April 23, 1:30 p.m., Fine Arts Center. Harold Evans classical and jazz pianist performs. No charge. Refreshments and fellowship. DeAnn Clancy, 610-525-8347 or deannclancy@hotmail.com.

LOOK AND SEE: A PORTRAIT OF WENDELL BERRY. Wed., April 25, 7:00 p.m., Bryn Mawr Film Institute. The final film in the Environmental Justice Committee's Green on Screen series is the story of Wendell Berry's return home to Henry County, Ky. The Rev. Dr. Gilson Waldkoenig from United Lutheran Seminary leads the discussion following the film. Courtenay Willcox, mcwillcox@gmail.com.

THEOLOGY FOR BEGINNERS. Thurs., April 26, 7:00 p.m., Gloucester Room. The Rev. Rebecca Kirkpatrick leads this class exploring what Christians believe about the Bible, God, Jesus, the Holy Spirit, Sin, the Church, and more. Anita Iyengar, aciyengar@gmail.com.

A MATTER OF BALANCE PROGRAM. Fridays, April 27 - June 15, 10:00 a.m. - noon, Gloucester Room. This free program provides practical strategies to manage falls and increase activity levels. Registration required; call 1-866-CALL-MLH.

MISSION SUMMIT. Sat., April 28, 9:00 a.m., Congregational Hall. Our annual Mission Summit is guided by Broad Street Ministry and the Mission Council. Join us to celebrate the stories we have told, the stories of service we have created, and commit to how we tell our story of mission in the future. CarolSchmidt@bmpe.org.

YOUNG ADULT BRUNCH. Sat., April 28, 10:00 - 11:30 a.m., the Rev. Franklyn C. Pottorff's Manse. All young adults (ages 22-40) are invited for brunch! Childcare in the Ed. Bldg. is available upon request three days prior to the event by emailing childcare@bmpe.org. Register: FranklynPottorff@bmpe.org.

Next Sunday

ONE BOOK ONE CHURCH. Sun., April 29, 11:15 a.m. and 1:00 p.m., Congregational Hall. At 11:15 a.m., Debby Irving, author of *Waking Up White*, presents "I'm a Good Person! Isn't That Enough?" This presentation includes a light brunch. At 1:00 p.m., Debby leads an interactive workshop on how we interpret patterns of privilege in our communities. Books available in the Book Center for \$5. CarolSchmidt@bmpe.org.

Upcoming

Y-GROUP BOOK CLUB. Tues., April 30, 7:30 p.m., Converse House Parlor. Closing discussion *Of Mess and Moxie: Wrangling Delight Out of This Wild and Glorious Life*. Colleen Bertrand, ckbertrand@icloud.com.

HORIZONS BIBLE STUDY. Wed., May 2, 10:30 a.m., Rosemont Presbyterian Village Ballroom. The Rev. Mary Steege leads our study of *Cloud of Witnesses: The Community of Christ in Hebrews* by Melissa Bane Sevier, Chapter 8. Joyce Malott, okf405@gmail.com.

MAIN LINE GUN VIOLENCE AWARENESS EVENT. Sun., May 6, 4:00 p.m. Meet at Bethel AME Church, 50 South Merion Ave., Bryn Mawr, for an educational forum and call to action. “Witness Walk” through Bryn Mawr to BMPC begins at 4:30 p.m. At 5:00 p.m. a remembrance service at the “Memorial to the Lost” T-shirt display is held on our front lawn. Refreshments provided. CarolSchmidt@bmpc.org.

ANNUAL MEETING OF THE CONGREGATION. Sun., May 6, following the 10:00 a.m. worship service. BeckyHoy@bmpc.org.

CONFIRMATION EXPO. Sun., May 13, 11:00 a.m., Gymnasium. All are invited to view projects presented by the Confirmands. AmyBauer@bmpc.org.

MURAL ARTS TROLLEY TOUR. Tues., May 15. Meet in the back parking lot at 8:45 a.m. Bus departs at 9:00 a.m. sharp. Tour the World’s Largest Outdoor Art Gallery and look into the heart and soul of the City of Brotherly Love. Cost: \$35. Register online by Tues., May 1, at www.bmpc.org > Calendar > Open Registrations or mail your check to BMPC, attention Amy Bauer, to secure your reservation. AmyBauer@bmpc.org.

CONFIRMATION SUNDAY. Pentacost Sunday, May 20. Following an 8:30 a.m. breakfast in Congregational Hall with their families, Confirmands are recognized during the 10:00 a.m. worship service. AmyBauer@bmpc.org.

HEALTHY STEPS FOR OLDER ADULTS. Mon., May 21 & Wed., May 23, 1:00 - 4:30 p.m., Gloucester Room. Do you have concerns about falling? Healthy Steps for Older Adults is a fall risk-awareness program for individuals 50 years of age or older. Participants must attend both workshops. Free. Register with CarolCherry@bmpc.org.

Caring & Sharing

COLLECTION FOR BROAD STREET MINISTRY. BSM is experiencing a dire need for men’s shoes and pants (no women’s clothing). Place in collection bins in the Ministries Center or Education Building.

INFANT FORMULA AND BABY FOOD COLLECTION. May 6 - May 20. Collection to be distributed to area food shelters. Donations may be placed in bins in the Ministries Center and Education Building.

CALLING ALL GOLFERS. Mon., June 18, 12:00 p.m. lunch and registration, 1:30 p.m. shotgun start, Jeffersonville Golf Club. This is the inaugural WKM Golf Outing to benefit West Kensington Ministries. Donation: \$150 per player includes lunch, green and cart fees, prizes, post tournament reception. Register: www.westkensingtonministry.com and click on “Golf Outing.” Chad Pilling, pillingcb@gmail.com, or Bill Adelhelm, adelhelmw@comcast.net.

BATTERY RECYCLING. Our Environmental Justice Committee offers battery recycling to BMPC members. Look for the container behind the Reception Desk in the Ministries Center. All household batteries accepted. Courtenay Willcox, mcwillcox@gmail.com.

This Week's Calendar

***For more information, visit our website at www.bmpc.org,
call the church office, or contact communications@bmpc.org.***

Today, April 22

- 7:45 a.m. Childcare, Ed. Bldg., Rm. 102
8:00 a.m. **Worship with Communion, Chapel**
8:45 a.m. Filling the Well (for women), Ed. Bldg., Rm. 104
Sunday Morning Discussion Group, Conference Room
Art @ 9, Ed. Bldg., Rm. 201
10:00 a.m. **Worship with Sanctuary Choir, Sanctuary**
Sunday School for age 2 - PreK, Ed. Bldg.
Grades K - 5 begin worship in the Sanctuary
Youth Gathering (Grades 5 - 12), Gymnasium
10:15 a.m. Sunday School for Grades K - 4, Ed. Bldg.
10:30 a.m. Middle School Connections Group (Grades 6 - 7), Loft
Confirmation (Grade 8) Connections Group, Gloucester Room
Grades 9 - 10 Connections Groups, Converse House Parlor
Grades 11 - 12 Connections Groups, Fullerton Room
11:00 a.m. Fellowship for Families, Ed. Bldg. Lobby
Café in the Court, Ministries Center
11:15 a.m. Hunger Committee Liaison Brunch, Congregational Hall
Justice and Gerrymandering, Witherspoon Parlor
12:15 p.m. Carillon Lessons, Fine Arts Center
4:00 p.m. Choir Concert: *Missa Gaia*, Sanctuary

Monday, April 23

- 1:30 p.m. Perspectives in Music, Fine Arts Center
3:30 p.m. Senior Adult Council Meeting, Fullerton Room
7:00 p.m. APNC Meeting, Fullerton Room

Tuesday, April 24

- 9:00 a.m. RePose Yoga, Gymnasium
10:30 a.m. Tai Chi, Gymnasium
1:00 p.m. Dance for Parkinson's Disease, Gymnasium
2:00 p.m. Parkinson's Disease Support Group, Gloucester Room & Witherspoon Parlor
6:30 p.m. Tutoring

Wednesday, April 25

- 10:00 a.m. Women's Coffee Cup Bible Study, Gloucester Room
Men's Study Group, Converse House Parlor
4:45 p.m. "Wednesdays Together" End-of-Year Party, Fine Arts Center
5:30 p.m. Wednesday Night Dinner, Congregational Hall
6:00 p.m. Youth Chorale End-Of-Year Party, Fine Arts Center
7:00 p.m. Student Serve, Loft
"Green on Screen," Bryn Mawr Film Institute

Thursday, April 26

- 8:30 a.m. Laurel House Meeting, Gloucester Room
10:00 a.m. Artists' Gathering, Gloucester Room
11:00 a.m. Senior Exercise Class, Gymnasium
11:30 a.m. Presby's Inspired Life Clergy Circle, Congregational Hall
7:00 p.m. Sanctuary Choir, Fine Arts Center
Theology for Beginners, Gloucester Room
Boy Scout Troop 19, Gymnasium

Friday, April 27

- 8:00 a.m. Foundation Investment Committee Meeting, Conference Room
10:00 a.m. A Matter of Balance, Witherspoon Parlor
4:00 p.m. Children's Spanish Class, Ed. Bldg.

Saturday, April 28

- 7:00 a.m. Saturday Morning Men's Group, Converse House Parlor
9:00 a.m. Mission Summit, Congregational Hall
10:00 a.m. Community Orchestra Rehearsal, Fine Arts Center
Bereavement Group, Fullerton Room & Middleton Center
Young Adult Brunch, Pastor Frank's Manse

Sunday, April 29

- 8:00 a.m. **Worship with Communion, Chapel**
10:00 a.m. **Worship with Sanctuary Choir, Sanctuary**
The Rev. Dr. Agnes W. Norfleet will preach.
Sunday School for ages 2 - Pre K.
Fifth Sunday Service for Grades 1 - 12.

Worship Staff

Agnes W. Norfleet, Pastor

Rebecca Kirkpatrick, Associate Pastor for Adult Education & Mission

Rachel Pedersen, Associate Pastor for Children & Family Ministry

Franklyn C. Pottorff, Associate Pastor for Congregational Life & Stewardship

David B. Smith, Interim Associate Pastor for Youth Ministry

Mary Steege, Associate Pastor for Pastoral Care & Senior Adults

Jeffrey Brillhart, Director of Music & Fine Arts

Edward L. Landin, Assistant Director of Music

Contact Information



Bryn Mawr Presbyterian Church

625 Montgomery Avenue, Bryn Mawr, PA 19010

610-525-2821

www.bmpc.org

[Facebook.com/BrynMawrPres](https://www.facebook.com/BrynMawrPres) • [Instagram.com/BrynMawrPres](https://www.instagram.com/BrynMawrPres)

24/7 Answering Service for Pastoral Emergencies: 610-525-2821

Main Line Adult Day Center: 610-527-4220

The Middleton Center: 610-525-0766 • info@middletoncenter.org

The Weekday School (Preschool): 610-525-2821, ext. 8840