



Bryn Mawr Presbyterian Church

November 17, 2019
8:00 a.m., Chapel
Thirty-third Sunday in Ordinary Time

WELCOME TO BMPC

TODAY'S SCHEDULE

Childcare (infant - age 5)

7:45 a.m. - 12:30 p.m.

Fullerton Room, Ministries Center

8:00 a.m. Worship, Chapel

Digging Deeper

8:45 a.m., Main Line Adult
Day Center, First Floor

Filling the Well

8:45 a.m., Converse House
Parlor

Art @ 9

Ages 3 - Grade 5
8:45 a.m., Conference Room

10:00 a.m. Worship, Sanctuary

Sunday School

Advent Gift Market

11:00 a.m., Congregational Hall

Ordination & Installation of Leigh DeVries

4:00 p.m., Sanctuary

*See calendar at back of bulletin for
a complete schedule.*

NEW HERE? We are pleased that you are joining us as we worship God this morning. Information about our programs is available near the main entrance. We invite you to participate in any of our programs, ministries and mission opportunities, as they are open to all.

JOIN US FOR FELLOWSHIP. Stop by the Ministries Center Court for coffee between 8:00 - 10:00 a.m. and join us for Coffee and Fellowship in Congregational Hall after the 10:00 a.m. Worship Service.

TO ASSIST YOU DURING WORSHIP. Children's bulletins with crayons may be found near the main entrance. If you are unable to come forward for Communion, please let an usher or server know, and Communion will be brought to you.

Subscribe to our BMPC eNews by adding your email address to the Fellowship Register.
For additional information about today's schedule, see the calendar at the back of this bulletin.

www.BMPC.org

GATHERING AROUND THE WORD

PRELUDE

WELCOME

Rachel Pedersen

† CALL TO WORSHIP

One: In the morning light, may we glimpse God's image deep within us,

All: The threads of eternal glory woven within us.

One: May we catch the mystery of the human community
fashioned in God's likeness,

**All: And recall God's love for us: deeper than knowing,
more enduring than time.**

One: Let us respond to God's call to us with our whole heart;

**All: With our whole life we worship God
in the sanctuary of praise and adoration.**

† HYMN 826

Lift High the Cross

CRUCIFER

CALL TO CONFESSION

AND PRAYER OF CONFESSION *(in unison)*

Loving and Forgiving God,

you have made all of us in your own image and likeness,
and yet we fail to love ourselves fully.

We build barriers which divide us, one from another,
and which deny your image and likeness in others.

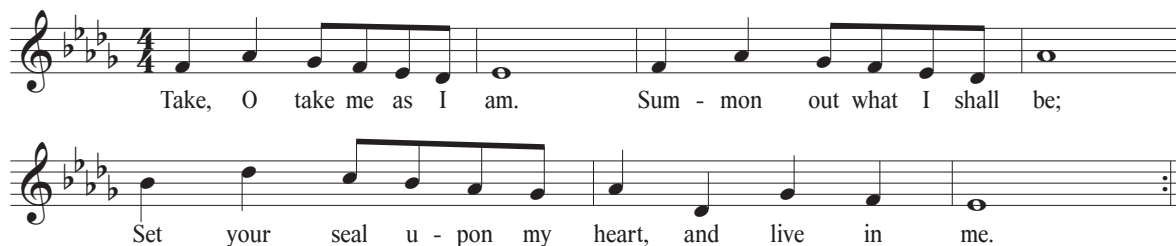
Help us live as people called to follow in your way,
who trust your power to reconcile us to you and to each other.

Shower us with forgiveness, and open our hearts and hands
to the new life of unity and peace you intend for us,
and for the human family.

A moment of silence for personal reflection and confession.

ASSURANCE OF PARDON

CONGREGATIONAL RESPONSE *(sung twice)*



Text and Music © 1995 WGRG, Iona Community (admin. GIA Publications, Inc.)
All rights reserved. Reprinted under OneLicense.net #A-716211.

HEARING THE WORD

PRAYER FOR ILLUMINATION

Gene Chang

FIRST LESSON

Psalm 133 (*p. 575 in pew Bible*)

Gene Chang

SECOND LESSON James 4:1, 11-12; 5:7-16 (*p. 230 in pew Bible*) Agnes W. Norfleet

One: The Word of the Lord.

All: **Thanks be to God.**

SERMON

When Kindred Live in Unity

Agnes W. Norfleet

† **HYMN 693**

Though I May Speak

GIFT OF LOVE

RESPONSE TO THE WORD

THE SACRAMENT OF THE LORD'S SUPPER

Rachel Pedersen

You are invited to come forward, using the center aisle, to partake of the Lord's Supper by intinction (dipping a piece of bread into the cup); return to your seat using the side aisle. Gluten and casein-free elements are on the center table.

You are invited to bring your offering when you come forward.

THE INVITATION TO COMMUNION AND THE GREAT THANKSGIVING

One: The Lord be with you.

All: And also with you.

One: Lift up your hearts.

All: We lift them to the Lord.

One: Let us give thanks to the Lord our God.

All: It is right to give our thanks and praise.

THE LORD'S PRAYER

Our Father who art in heaven, hallowed be thy name, thy kingdom come, thy will be done, on earth as it is in heaven. Give us this day our daily bread. And forgive us our trespasses, as we forgive those who trespass against us. And lead us not into temptation, but deliver us from evil. For thine is the kingdom, and the power, and the glory, forever. Amen.

COMMUNION OF THE PEOPLE

MINISTRY MOMENT

Advent Gift Market

Cameron Liggett

PRAYER OF DEDICATION

Agnes W. Norfleet

† HYMN 170

You Walk along Our Shoreline

WIE LIEBLICH IST DER MAIEN

† SENDING AND PASSING OF THE PEACE

One: The peace of Christ be with you.

All: And also with you.

POSTLUDE

Worship Notes

SANCTUARY FLOWERS

Given to the glory of God and in loving memory of
Pinkie Hamilton

ASSISTING WITH COMMUNION

Elder Gene Chang

USHERING

Deacon Brian Kerr

BULLETIN COVER

Te Deum ~ Photo by Bill Kemmerer

Announcements

BRYN MAWR GIVES: STEWARDSHIP 2020. Thank you to those who have sent in their pledges! Did you know that one of the main reasons we ask for pledge commitments is so that we can best allocate those resources for the upcoming budget year? It allows us to continue to support the many mission, outreach, educational and spiritual programs we provide and partner with here at BMPC. Thank you!

LOOKING FOR A CHURCH HOME? Consider learning more about being in community here by attending our “Discover BMPC” orientation classes on Mondays, Nov. 25 and Dec. 2 at 7:00 p.m. in the Ministries Center. These two classes provide an opportunity to become acquainted, ask questions, and learn more about our church, our Presbyterian heritage, and our mission. Inquirers welcome, and childcare available with advance notice. Register online at www.bmpc.org > Calendar > Open Registrations. FranklynPottorff@bmpc.org.

CHRISTMAS FLOWER DONATIONS. Contributions may be given in three categories for listing in the Christmas Eve bulletin: “In memory of,” “In honor of,” or “In celebration of (marriage, retirement, birth, baptism).” Forms are available in the Ministries Center, in the back of the Sanctuary, or at www.bmpc.org. Monies received are used year-round for our floral decorations and Deacons’ flower ministry. Deadline: Sun., Nov. 24.

DO YOU LOVE BOOKS? Volunteers are needed for the Converse House Library! Shelving, sorting, etc. can be done at whatever time suits your schedule. Kat MacMurray, katrmac2@icloud.com.

Today

ADVENT GIFT MARKET. 11:00-12:30 p.m., Congregational Hall. Join us for the opening Market Festival where representatives from the various committees and councils are available to answer questions about their chosen mission projects. AGM representatives are taking orders on successive Sundays in the gymnasium. Orders also may be placed online at <http://bit.ly/2019AdventGiftMarket>.

CARING CORNER. Social Worker Renee Malnak will be available to speak with church members during the Advent Gift Market Festival in Congregational Hall, and Parish Nurse Carol Cherry will offer blood pressure screenings at the Refugee Support Committee table.

ORDINATION & INSTALLATION OF OUR NEW ASSOCIATE PASTOR. 4:00 p.m., Sanctuary. Leigh DeVries, Associate Pastor for Youth & Their Families, is to be ordained and installed in a special worship service. Reception follows in Congregational Hall.

This Week

URBAN SUBURBAN BOOK GROUP. Tues., Nov. 19, noon, Converse House Parlor. Discussion of *Where the Crawdads Sing* by Delia Owens. JoanneHanna3@comcast.net.

DIMENSIONS IN LITERATURE. Tues., Nov. 19, 2:00-4:00 p.m., Converse House Parlor. Please note new time and location. Join us as we discuss this award-winning novel, *The Remains of the Day*, by Nobel Prize winner Kazuo Ishiguro. Light refreshments served. Erichthorjohnson@gmail.com.

GREAT DECISIONS. Tues., Nov. 19, 2:30 p.m., Rosemont Presbyterian Village Entertainment Center. Discuss the war on drugs, immigration, and trade issues that have pressured the United States and Mexico Partnership. Marilyn Irwin, marirwin@aol.com.

FAMILY FUN FRIDAY. Fri., Nov. 22, 5:30 p.m., Congregational Hall. Families are invited to a showing of "The Polar Express" and a pizza dinner. Children may wear pajamas and bring blankets. If you prefer gluten-free pizza, please let us know when you respond. Suggested donation: \$5 per person or \$20 cap per family. Register: MaryRichards@bmpc.org.

Next Sunday

EVERYTHING YOU ALWAYS WANTED TO KNOW ABOUT RELIGION BUT WERE AFRAID TO ASK. Sun., Nov. 24, 11:15 a.m., Chapel. The Rev. Dr. Paul MacMurray leads an informal conversation on the basics of Christian theology, the Bible and tradition, based on questions that participants bring to the class.

Upcoming

ANNUAL THANKSGIVING PANCAKE BREAKFAST. Thurs., Nov. 28, 8:30-11:30 a.m., Congregational Hall. Join us for "Pancakes for a Purpose," and enjoy fellowship and food at this annual event. All proceeds (\$5 per person) support the youth mission projects and trips.

ADVENT CRAFT WORKSHOP. Sun., Dec. 1, 11:15 a.m., Congregational Hall. Families are invited to a festive event to create craft projects that help prepare for the Advent season. Join us for hands-on fun and fellowship for all ages! MaryRichards@bmpc.org.

THE PROPHETS IN ADVENT. Sundays, Dec. 1-15, 11:15 a.m., Chapel. Dr. Tim Horner, Assistant Professor of Center for Peace and Justice Education at Villanova University, offers three classes on the Season of Advent and how the prophets called for justice then and now.

ADVENT HARPSICHORD RECITALS. Tuesdays, Dec. 3, 10 and 17, 12:00 p.m. Temple University harpsichord students Silvanio Reis and Anna Kislitsyna, and their professor, Joyce Lindorff, perform 30-minute recitals on BMPC's William Dowd Memorial Harpsichord. A free-will offering supports the Village, one of BMPC's mission partners making great strides to promote the healing of the spirits of children, families, and communities broken by violence, neglect, addiction, poverty, mental illness, racism, and other serious societal problems.

EVENINGS OF QUIET PRAYER. Wednesdays, Dec. 4 and 11, 6:00-6:45 p.m., the Middleton Center, Rm. 202, second floor of Converse House. Join us for two evenings of gentle prayer, candlelight and thoughtful conversation. Patricia Danzon, spiritual director, along with the Rev. Brian Ballard and Deacon David Heaton, facilitate prayers, readings, contemplative music and a time of sharing. BBallard@bmpc.org.

BIBLE FROM SCRATCH. Thurs., Dec. 5, 7:00 p.m., Loft. Led by the Rev. Rebecca Kirkpatrick. If you're ready to think about scripture in new and creative ways, this class is for you.

GATHERING OF MEDICAL PROFESSIONALS. Sun., Dec. 8, 11:15 a.m., Congregational Hall. The BMPC Mission Council invites all medical professionals, including those who are retired, for a brainstorming session on how the church might engage in medical mission and outreach to our local community. This is part of a larger conversation on what mission and outreach might look like in our newly-renovated spaces. A light lunch follows. Please RSVP to CarolSchmidt@bmpc.org to confirm attendance.

CHRISTMAS CONCERT: MAGNIFICAT. Sun., Dec. 8, 4:00 p.m., Sanctuary. Celebrate the Christmas season with all BMPC choirs, accompanied by the Brandywine Brass. This concert also features works by Anton Bruckner, Paul Halley, Gerald Finzi, Franz Biebl, Elizabeth Poston, William Dawson as well as congregational carol singing. A free-will offering supports Prevention Point Philadelphia, a nonprofit organization working to fight the opioid crisis by providing harm-reduction services in the Philadelphia area.

PRIME TIME ADVENT PARTY FOR SINGLES AND COUPLES AGE 50+. Sun., Dec. 8, 6:00-8:00 p.m., New location: Merion Tribute House (directions to be mailed). Register by Dec. 4 online at www.bmpc.org > Calendar > Open Registrations or with a check for \$18 per person that includes heavy hors d'oeuvres and beverages. attn: Monica Devane.

Caring & Sharing

TURKEY AND HAM COLLECTION. Frozen turkeys and hams may be contributed for distribution by the Hunger Committee during November. Freezer is located next to the food cupboard near the elevators in the Ministries Center.

CHRISTMAS ANGELS. Share the spirit of Christmas by adopting a family or sponsoring a child (five to eight gifts per child). To contact Betty Wu: bmpcangels@gmail.com, stop by the Angel Trees in the Ministries Center, or sign up online: <http://bit.ly/2019BMPCAngels>. Gifts are due by Sun., Dec. 8.

CHRISTMAS JOY OFFERING. Supporting past, present and future leaders! A Presbyterian tradition since the 1930s, this Offering distributes gifts equally to the Assistance Program of the Board of Pensions and to Presbyterian-related schools and colleges that serve communities of color. The Assistance Program provides critical financial support to church workers and their families. Look for offering envelopes in the pew holders on Dec. 15 and 22, or note “Christmas Joy” on the memo line of your check.

FOOD DONATIONS NEEDED. Donations have been *low*, and the need is *great*. Place donations in baskets in the Narthex or in the food cupboard in the hallway next to the elevators in the Ministries Center. Financial donations may be made using Hunger Envelopes in the pew holders or by noting “Hunger” on the memo line of your check.

This Week’s Calendar

***For more information, visit our website at www.bmpc.org,
call the church office, or contact communications@bmpc.org.***

Today, November 17

- 7:45 a.m. Childcare, Fullerton Room
8:00 a.m. **Worship with Communion, Chapel**
8:45 a.m. Digging Deeper, Main Line Adult Day Center, First Floor Living Room
Filling the Well, Converse House Parlor
Art @ 9, Conference Room
10:00 a.m. **Worship with Sanctuary Choir, Sanctuary**
Sunday School for age 2, Gloucester Room
Sunday School for age 3, Witherspoon Parlor
Sunday School for Pre-K, Middleton Center, Rm. 200
Grades K - 5 Begin Worship in the Sanctuary
Youth Gathering (Grades 6-12), Gymnasium
10:15 a.m. Sunday School for Grade K, Middleton Center, Rm. 202
Sunday School for Grades 1 & 2, Congregational Hall
Sunday School for Grade 3, Middleton Center, Rm. 301
Sunday School for Grades 4-5, Converse House Parlor
10:30 a.m. Grades 6 & 7 Connection Group, Main Line Adult Day Center
Grade 8 Confirmation, Loft
Grades 9 & 10 Connection Group, Gymnasium Stage
Grades 11 & 12 Connection Group, Pastors’ Conference Room
11:00 a.m. Advent Gift Market, Congregational Hall
4:00 p.m. **Ordination & Installation of Leigh DeVries, Sanctuary**

Monday, November 18

- 6:00 p.m. IT Committee Meeting, Converse House Parlor

Tuesday, November 19

- 9:00 a.m. Repose Yoga, Gymnasium
- 10:30 a.m. Tai Chi, Gymnasium
- 12:00 p.m. Urban Suburban Book Group, Converse House Parlor
- 1:00 p.m. Dance for Parkinson's Disease, Gymnasium
- 2:00 p.m. Dimensions in Literature, Converse House Parlor
- 2:30 p.m. Great Decisions, Rosemont Presbyterian Village Ballroom
- 6:45 p.m. Tutoring, Congregational Hall

Wednesday, November 20

- 8:00 a.m. Stewardship Committee Meeting, Converse House Parlor
- 10:00 a.m. Women's Coffee Cup Bible Study, Congregational Hall
- 4:45 p.m. Wednesdays Together (Grades K-5), Fine Arts Center
- 5:30 p.m. Wednesday Night Dinner, Congregational Hall
- 5:45 p.m. Youth Chorale (Grades 6-12), Fine Arts Center
- 7:00 p.m. Student Serve, Loft
Outreach Committee Meeting, Event is Off Campus

Thursday, November 21

- 9:15 a.m. Senior Exercise Class, Gymnasium
- 9:30 a.m. Singing for Life, Fine Arts Center
- 10:00 a.m. Artists' Gathering, Fine Arts Center
- 7:00 p.m. Boy Scout Troop 19, Gymnasium
Hunger Committee Meeting, Converse House Parlor
Sanctuary Choir and Bryn Mawr Chamber Singers, Fine Arts Center

Friday, November 22

- 4:00 p.m. Children's Spanish Class, Gloucester Room and Witherspoon Parlor
- 5:30 p.m. Family Fun Friday: "The Polar Express," Congregational Hall

Saturday, November 23

- 7:00 a.m. Saturday Morning Mens' Group, Converse House Parlor
- 10:00 a.m. Searching for Still Waters Bereavement Group, Middleton Center, Rm. 202

Sunday, November 24

- 8:00 a.m. **Worship with Communion, Chapel**
- 10:00 a.m. **Worship with Sanctuary Choir, Sanctuary**
The Rev. Rebecca Kirkpatrick will preach.
Sunday School for age 2 - Grade 12.

Renovations Update

DAYTIME Traffic Patterns: Each weekday from 7:00 a.m. until 2:00 p.m., the driveway between the Chapel and the Sanctuary will be *one way*, with cars exiting onto Montgomery Avenue. This adjustment allows for the safe movement of children from the Weekday School during drop-off and pick-up. Please use the driveway between the Ministries Center and the Sanctuary to enter the campus from Montgomery Avenue during these weekday hours.

For more renovation updates, please visit us at:
www.bmpc.org/welcome/renovation-updates

This box will be updated regularly to keep you informed about how the renovation process is impacting our ministries and programs.



Worship Staff

Agnes W. Norfleet, Pastor

Brian K. Ballard, Associate Pastor for Pastoral Care & Senior Adults

Leigh DeVries, Associate Pastor for Youth & Their Families

Rebecca Kirkpatrick, Associate Pastor for Adult Education & Mission

Rachel Pedersen, Associate Pastor for Children & Family Ministry

Franklyn C. Pottorff, Associate Pastor for Congregational Life & Stewardship

Jeffrey Brillhart, Director of Music & Fine Arts

Edward Landin Senn, Assistant Director of Music

Contact Information



Bryn Mawr Presbyterian Church

625 Montgomery Avenue, Bryn Mawr, PA 19010

610-525-2821

www.bmpc.org

[Facebook.com/BrynMawrPres](https://www.facebook.com/BrynMawrPres) • [Instagram.com/BrynMawrPres](https://www.instagram.com/BrynMawrPres)

24/7 Answering Service for Pastoral Emergencies: 610-525-2821

Main Line Adult Day Center: 610-527-4220

The Middleton Center: 610-525-0766 • info@middletoncenter.org

The Weekday School (Preschool): 610-525-2821, ext. 8840