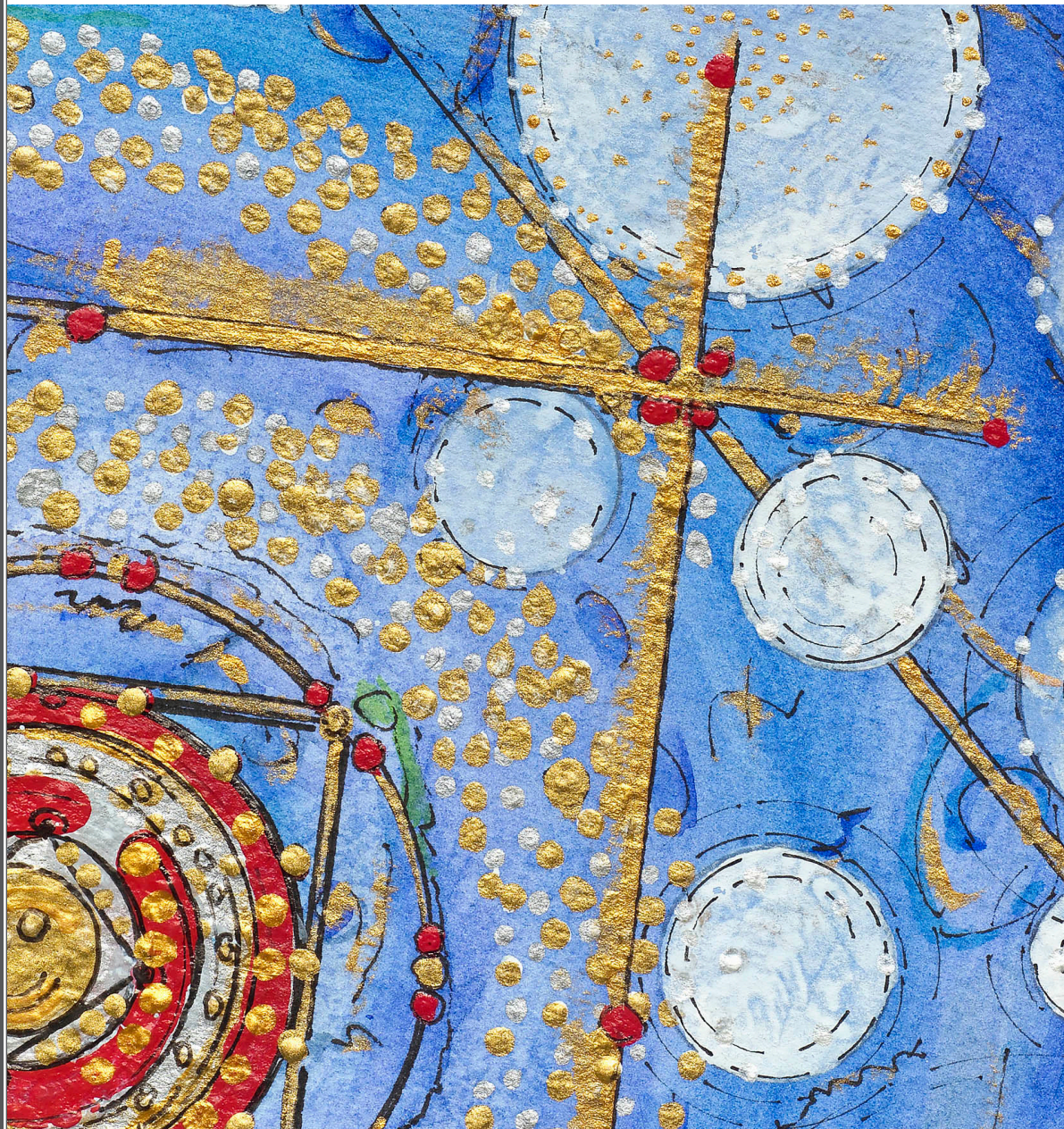


Bryn Mawr Presbyterian Church

Sunday, March 13, 2022 | 10:00 a.m., Sanctuary

Second Sunday in Lent



WELCOME

NEW HERE?

We are pleased that you are joining us as we worship God this morning. We invite you to introduce yourself to one of our pastors at the Sanctuary doors following the Worship Service. All of our programs, ministries, and opportunities for mission are open to everyone. Come join us!

COVID-19 GUIDELINES

Masks are optional inside church buildings, although masks may be required in some areas of the Education Building. Please maintain physical distance inside, and be mindful that we are an intergenerational community and that while COVID vaccines are available for children ages five to 11, some children may not have been vaccinated.

LIVESTREAMED CHURCH SERVICES

In addition to in-person worship, the Sunday Worship Services are available to watch live at 10:00 a.m. on our live-streaming page: www.bmpc.org/livestream. For your convenience, the service also will be posted on our Worship Services page on Monday.

CHILDCARE AND SUNDAY SCHOOL

Childcare is available on Sundays from 8:00 a.m. to noon for children ages six months and older. See Sunday School class information on this page. Please contact Childcare Coordinator Rebecca Kellich at childcare@bmpc.org with any questions.

WEEKLY E-NEWSLETTER

Subscribe to our BMPC eNews by visiting our website: www.bmpc.org.

Today's Schedule

Childcare

8:00 a.m., Ed. Bldg., Rm. 102

10:00 a.m. Worship, Sanctuary

Sunday School

Ages 2 to Grade 5
10:00 a.m., Ed Bldg.

Confirmation Class

10:00 a.m.
Foerderer House, 2nd Floor

Youth Gathering

10:00 a.m., Gymnasium

Adult Education - Luke in Lent

11:15 a.m., Fullerton Room
and Virtual

Michael Bartmann Art Exhibit

9:00 a.m. - noon
Fine Arts Gallery, Ministries Center

GATHERING OF GOD'S PEOPLE

PRELUDE

O Man, Bewail Thy Greivous Sin

J.S. Bach

WELCOME

Rebecca Kirkpatrick

† CALL TO WORSHIP

One: Christ, you offer us healing;

All: may we be made well by your life.

One: You renew our hope;

All: may we follow Jesus with conviction.

One: You sat at table with sinners;

All: may we forgive as we have been forgiven.

One: In you our resurrection has already begun;

All: may we respond in faithfulness and praise.

† HYMN 49

The God of Abraham Praise

LEONI

CALL TO CONFESSION

AND PRAYER OF CONFESSION (*in unison*)

Lord God, we know we have sinned and pray that you listen to our confession. We get used to the silence of the voiceless. We prefer the privileges we hold dear and seldom wonder if they are at someone else's expense. It is easier to go with the flow, than to rearrange our lives to fit into your patterns. Forgive our stubborn ways, O God, and renew within us a spirit of courage for the hard road of faithfully following Jesus Christ.

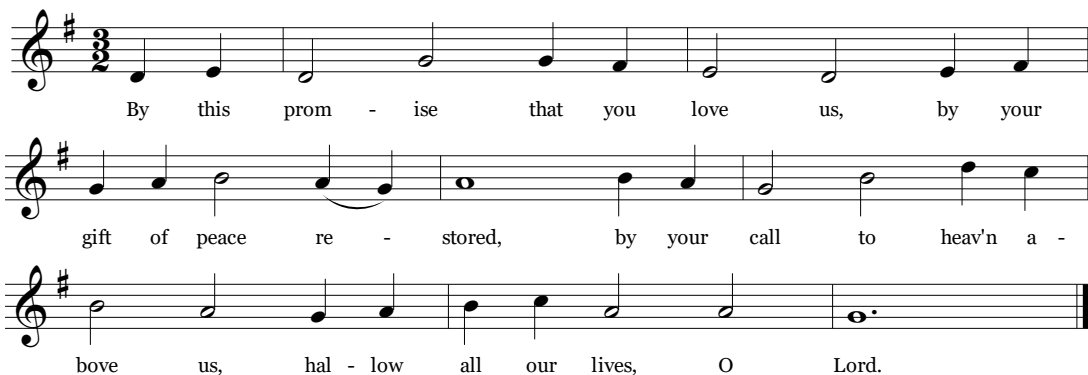
A moment of silence for personal reflection and confession.

ASSURANCE OF PARDON

SUNG RESPONSE

By This Promise

KINGDOM



PROCLAMATION OF THE WORD

THE SACRAMENT OF BAPTISM

Rachel Pedersen

One: Do we, as members of the church of Jesus Christ, promise to guide and nurture this child by word and deed, with love and prayer, encouraging her to know and follow Christ and to be a faithful member of His church?

All: We do.

BAPTISM HYMN 188

Jesus Loves Me!

JESUS LOVES ME

Jesus loves me! This I know, for the Bible tells me so. Little ones to him belong. They are weak, but he is strong. Yes, Jesus loves me! Yes, Jesus loves me! Yes, Jesus loves me! The Bible tells me so.

FIRST LESSON

Luke 13:1-9 (*p. 76 in pew Bible*)

ANTHEM

Give Me Jesus

Wendell Whalum

Sanctuary Choir

Elizabeth Weigle, soprano

Oh, when I come to die, give me Jesus. You may have all this world, give me Jesus. I heard my mother say, give me Jesus. Dark midnight was my cry, give me Jesus. In the morning when I rise, give me Jesus.

SECOND LESSON

Luke 13:22-30 (*pg. 76 in pew Bible*)

Agnes W. Norfleet

One: The Word of the Lord.

All: Thanks be to God.

SERMON

Merciful Savior

Agnes W. Norfleet

Lenten Series on *Who is Jesus?*

† HYMN 769

For Everyone Born

FOR EVERYONE BORN

RESPONSE TO THE WORD

† AFFIRMATION OF FAITH (*in unison*)

Brian K. Ballard

We trust in Jesus Christ, fully human, fully God.

Jesus proclaimed the reign of God:

preaching good news to the poor and release to the captives,

teaching by word and deed and blessing the children,

healing the sick and binding up the brokenhearted,

eating with outcasts, forgiving sinners,

and calling all to repent and believe the Gospel.

Unjustly condemned for blasphemy and sedition, Jesus was crucified,
suffering the depths of human pain
and giving his life for the sins of the world.

God raised this Jesus from the dead,
vindicating his sinless life,
breaking the power of sin and evil,
delivering us from death to life eternal.

~ from *A Brief Statement of Faith*

PASTORAL PRAYER AND THE LORD'S PRAYER

Our Father who art in heaven, hallowed be thy name, thy kingdom come, thy will be done, on earth as it is in heaven. Give us this day our daily bread. And forgive us our trespasses, as we forgive those who trespass against us. And lead us not into temptation, but deliver us from evil. For thine is the kingdom, and the power, and the glory, forever. Amen.

INVITATION TO DISCIPLESHIP

OFFERTORY ANTHEM

Abide with Me
Sanctuary Choir

Moses Hogan

Abide with me, fast falls the eventide; The darkness deepens, Lord, with me abide. When other helpers fail and comforts flee, Help of the helpless, O abide with me. I need Thy presence ev'ry passing hour. What but Thy grace can foil the temptor's pow'r? Who, like Thyself, my guide and stay can be? Through cloud and sunshine, O abide with me. O Thou who changest not, abide with me. In life or death, O Lord, abide with me. Amen.

† **DOXOLOGY** 606 Praise God, from Whom All Blessings Flow OLD HUNDREDTH

Praise God, from whom all blessings flow; praise God, all creatures here below;
praise God above, ye heavenly host; praise Father, Son, and Holy Ghost. Amen.

† **PRAYER OF DEDICATION**

Brian K. Ballard

† **HYMN** 282

Come Down, O Love Divine

DOWN AMPNEY

† **BENEDICTION AND CHORAL RESPONSE**

Agnes W. Norfleet

POSTLUDE

"Kyrie elesion" from *Clavierübung, Part III*

J.S. Bach

WORSHIP NOTES

RECEIVING THE SACRAMENT OF BAPTISM

Fiona Fischer Wawszczyk
Daughter of Nicole Black & Romuald Wawszczyk

SANCTUARY FLOWERS

Given to the Glory of God and in honor of the
Marriage of William H. Graf and Katheryn R. West and in memory of
Beverly G. Meaney, Ruthann H. and Bayard M. Graf, and Richard L. Johnson

PLAYING THE CARILLON

Wade FitzGerald

BULLETIN COVER

Connection 2 © James Fissel | Eyekons

Season of Lent

STORY PATH LABYRINTH. Walking a labyrinth during the Lenten season provides a meaningful way to journey to Jerusalem. The small labyrinth in the Chapel is open Monday through Friday, 8:00 a.m. to 7:00 p.m., Saturday, 9:00 a.m. to 3:00 p.m., and Sunday, 11:00 a.m. to 12:00 p.m.

LENTEN RECITAL SERIES. Tuesdays through March 29, noon, Chapel. All are invited to gather weekly in the Chapel to enjoy brief recitals on the newly-restored Chapel organ. On March 15 we invite you to listen to the artistry of Wesley Parrott. For the recital schedule, visit <https://www.bmpc.org/concerts>.

Announcements

UPDATE ON MASKS. With guidance from the CDC, masks are now optional on our church campus. Please be mindful that masks may be required for some programs or events.

EASTER LILY DONATIONS. Contributions may be given in three categories for listing in the Easter Sunday bulletin: “In memory of,” “In honor of,” or “In celebration of (marriage, retirement, birth, baptism).” Monies received are used year-round for our floral decorations and the Deacons’ Flower Ministry. You may fill out an online donation form (<https://bit.ly/flower-donation>), or pick up a printed copy of the form at the reception desk in the Ministries Center. Donation deadline is Sun., April 3. SarahMiciekb@bmpc.org.

Today

LUKE IN LENT. Sundays through March 27, 11:15 a.m., Fullerton Room or by streaming via Zoom: <https://bit.ly/spring-adult-ed>. Based on the Luken passages selected for our 2022 Lenten Devotional, this class explores both the traditional and contemporary ways that scholars have interpreted these passages from the Gospel of Luke. Dr. Joshua Yoder is leading the class. RebeccaKirkpatrick@bmpc.org.

This Week

GENTLE YOGA. Mondays through April 25, 4:30 p.m., Gymnasium. This 60-minute class focuses on stretching, gentle movements and breathing techniques to enhance meditation and relaxation. To register, contact instructor Rosa Giletti at 267-644-9685 or via email: rosagiletti@comcast.net.

BONE BOOST YOGA CLASS. Wednesdays through April 6, 10:00 a.m., Gymnasium. Bone Boost is a one-hour in-person all-levels mat and chair yoga class that focuses on bone strength with adapted, safe poses. Class is open to persons aged 50 and over who are interested in reducing bone loss or those diagnosed with medical conditions such as osteopenia or osteoporosis. Proof of COVID-19 vaccination and masks required. For information, email Abby Contract, YOGA206@icloud.com.

RESTORATION OF BMPC'S STAINED GLASS WINDOWS. Fri., March 18, 10:30 a.m., Sanctuary. The Senior Adult Council invites all to an in-person tour and presentation about the stained glass windows in the Sanctuary which were created by the Willet Studios of Philadelphia between 1928 and 1997. During the past decade several windows have been restored, most recently the Resurrection window in the east transept. The restoration was done by Mark Beard, and he will discuss details about our windows and the restoration process he employed. Contact Monica Devane to register: MonicaDevane@bmpc.org.

Next Sunday

PRAYER SHAWL & CREATIVE GIFTS FOCUS. Sun., March 20, following worship, new Caring Ministries Office. The Caring Ministries Team invites you to stop by to see a sampling of our members' creative gifts. Prayer shawl knitters will be present. Come see how to make Peyton hearts for suicide awareness and other items for our caring ministry.

Upcoming

IMMORTAL DIAMOND BOOK GROUP. Tuesdays beginning on March 22 at 7:00 p.m. via Zoom. Join Middleton Center Spiritual Director Patricia Danzon in a five-week exploration of Richard Rohr's book, *Immortal Diamond*. For information about joining this class, contact KikiMcKendrick@bmpc.org.

POLYPHONY STRING QUARTET. Wed., March 23, 7:30 p.m., Sanctuary. The Polyphony String Quartet from Nazareth, Israel, will be joined by members of the Philadelphia Orchestra and the Bryn Mawr Presbyterian Church Chamber Singers to perform Schubert's String Quartet No. 13 (Rosamunde), selections from the Mendelssohn String Octet, and other masterpieces. Suggested donation: \$20.

PRESBYTERIAN WOMEN'S RETREAT 2022. Fri., April 1-Sun., April 3, Pendle Hill (Swarthmore). Our retreat will be led by Lori Erickson, author and travel writer, reflecting on her work exploring genealogy, family stories and faith. Participants may stay on site or commute, and scholarships are available. Register online: <https://bit.ly/pendle-hill-retreat>. For more information, contact MaryRichards@bmpc.org.

VICTORIA WYETH PRESENTATION. Sun., April 3, 11:45 a.m., Sanctuary. The Senior Adult Council invites all to a presentation by Victoria Wyeth, the only grandchild of iconic artist Andrew Wyeth. She will focus on Wyeth's Pennsylvania and Maine paintings, examining the most famous portraits, landscapes and still life pieces. Attention will be given to the subject matter, technique, and family stories behind the paintings. Presentation is free, but registration is requested. MonicaDevane@bmmpc.org.

VACATION BIBLE CAMP 2022. Mon., June 20 - Fri., June 24. This year's VBC theme is "Follow Me!" Meet the people and explore the places where Jesus taught and served. From a stormy sea to a crowded city street, come travel with Jesus' disciples and learn how you can help share God's love with others. VBC is held from 9:00 a.m. - 12:00 p.m., for ages 3 years to 5th grade. Volunteers of all ages are invited to sign up to help make this a special week for the children of our church and community. Register campers online: <https://bit.ly/vbc-22>. MaryRichards@bmmpc.org.

Caring and Sharing

SUPPORT PRESBYTERIAN DISASTER EFFORTS IN UKRAINE. Presbyterian Disaster Assistance (PDA) is joining with reformed churches in Ukraine and the region to respond to the humanitarian crisis created by the war. PDA anticipates its response will include both financial and technical assistance as the network of faith communities providing humanitarian assistance continues to grow. If you wish to support the work of PDA in Ukraine, you may make a donation today by indicating "Ukraine Response" on the memo line of your check, or by giving online: <https://onrealm.org/bmmpc/give/disaster>.

Calendar

Sunday, March 13

8:00	a.m.	Childcare, Ed. Bldg., Rm. 102
8:30	a.m.	Sunday Morning Discussion Group, Virtual Faith Under 5 Sunday School, Virtual
8:45	a.m.	Digging Deeper, Gloucester Room Filling the Well, Children's Library
9:00	a.m.	Sunday School for Grades 1 & 2, Virtual
10:00	a.m.	Worship with Baptism and Sanctuary Choir, Sanctuary or Livestreamed Service on www.bmpc.org Ages 2-3, Ed. Bldg., Nursery PreK & K, Ed. Bldg., Rm. 201 Grades 1 & 2, Ed. Bldg., Main Lobby Grade 3, Ed. Bldg., Rm. 202 and Virtual Grades 4 & 5, Ed. Bldg., Rm. 204 and Virtual Confirmation Class, Foerderer House, 2nd Floor Youth Gathering for Middle and High School, Gymnasium
11:00	a.m.	Lenten Story Path Labyrinth Walk, Children's Chapel
11:15	a.m.	Luke in Lent, Fullerton Room and Virtual

Monday, March 14

8:00	a.m.	Lenten Story Path Labyrinth Walk, Children's Chapel
4:00	p.m.	Environmental Justice Committee Meeting, Virtual
4:30	p.m.	Gentle Yoga, Gymnasium
6:00	p.m.	Foundation Board Meeting, Virtual
7:00	p.m.	Peacemaking Committee Meeting, Virtual

Tuesday, March 15

8:00	a.m.	Lenten Story Path Labyrinth Walk, Children's Chapel
8:30	a.m.	Tuesday Morning Study Group, Converse House Parlor
9:00	a.m.	Repose Yoga, Virtual
10:30	a.m.	Tai Chi, Virtual or Gymnasium
12:00	p.m.	Lenten Chapel Organ Recital, Chapel
1:00	p.m.	Dance for Parkinson's Disease, Gymnasium
5:00	p.m.	Midweek Meet-Up, Virtual
6:00	p.m.	Tutoring Program, Ed. Bldg.

Wednesday, March 16

8:00	a.m.	Lenten Story Path Labyrinth Walk, Children's Chapel
10:00	a.m.	Women's Coffee Cup Bible Study, Virtual Yoga206 Bone Boost Class, Gymnasium
4:45	p.m.	Wednesdays Together, Fine Arts Center
7:00	p.m.	Student Serve, Ed. Bldg., Covered Patio

Thursday, March 17

8:00	a.m.	Lenten Story Path Labyrinth Walk, Children's Chapel
9:30	a.m.	Singing for Life, Fine Arts Center
10:00	a.m.	Thursday Book Group, Virtual
7:00	p.m.	Sanctuary Choir and Bryn Mawr Chamber Singers, Fine Arts Center and Virtual Hunger Committee Meeting, Virtual

Friday, March 18

8:00	a.m.	Lenten Story Path Labyrinth Walk, Children's Chapel
10:30	a.m.	Stained Glass Window Tour, Sanctuary
3:45	p.m.	Spanish School, Ed. Bldg.

Saturday, March 19

7:00	a.m.	Saturday Morning Men's Group, Converse House Parlor and Virtual
9:00	a.m.	Lenten Story Path Labyrinth Walk, Children's Chapel

Sunday, March 20

10:00	a.m.	Worship, Sanctuary or Livestreamed Service on www.bmpc.org The Rev. Dr. Agnes W. Norfleet will preach.
-------	------	--

Worship Staff

Agnes W. Norfleet, Pastor

Brian K. Ballard, Associate Pastor for Pastoral Care & Senior Adults

Leigh DeVries, Associate Pastor for Youth & Their Families

Rebecca Kirkpatrick, Associate Pastor for Adult Education & Mission

Rachel Pedersen, Associate Pastor for Children & Family Ministry

Franklyn C. Pottorff, Associate Pastor for Congregational Life & Stewardship

Jeffrey Brillhart, Director of Music & Fine Arts

Edward Landin Senn, Assistant Director of Music

Contact Information



Bryn Mawr Presbyterian Church
625 Montgomery Avenue, Bryn Mawr, PA 19010

610-525-2821 • www.bmpc.org

www.facebook.com/BrynMawrPres

www.instagram.com/BrynMawrPres

www.twitter.com/BrynMawrPres

www.youtube.com/user/brynmawrpres

24/7 Answering Service for Pastoral Emergencies: 610-525-2821

The Middleton Center: 610-525-0766 • info@middletoncenter.org

The Weekday School (Preschool): 610-525-2821, ext. 8840