

# *Bryn Mawr Presbyterian Church*

Sunday, July 30, 2023 | 10:00 a.m., Sanctuary

Ninth Sunday after Pentecost



# WELCOME

## NEW HERE?

We are pleased that you are joining us as we worship God this morning. We invite you to introduce yourself to one of our pastors in the Atrium following the Worship Service. All of our programs, ministries, and opportunities for mission are open to everyone. Come join us!

## LIVESTREAMED CHURCH SERVICES

In addition to in-person worship, the Sunday Worship Services are available to watch live at 10:00 a.m. on our live-streaming page: [www.bmpc.org/livestream](http://www.bmpc.org/livestream) For your convenience, the service also will be posted on our Worship Services page on Monday.

## CHILDCARE AND SUNDAY SCHOOL

Childcare is available on Sundays from 7:45 a.m. to 12:30 p.m. for children ages six months and older. See Sunday School class information on this page. Please contact Pastor Rachel, [RachelPedersen@bmpc.org](mailto:RachelPedersen@bmpc.org) or Childcare Coordinator Erika Henry at [childcare@bmpc.org](mailto:childcare@bmpc.org) with any questions.

## WEEKLY E-NEWSLETTER

Subscribe to our BMPC eNews by visiting our website: [www.bmpc.org](http://www.bmpc.org)

## Today's Schedule

### Childcare (infant - age 5)

7:45 a.m. – 12:30 p.m.

Ed. Bldg., Rm. 101

---

### Worship with Communion and Summer Choir

10:00 a.m., Sanctuary

---

### Worship Together Sunday Grades 4-12

10:00 a.m., Sanctuary

---

### Summer Sunday School

10:00 a.m.

Ages 3 and 4, Ed. Bldg., Rm. 106

Rising K-Grade 3 begin in  
Worship

---

### Stories Through Art Exhibit

9:00 a.m. to 12:00 p.m.

Art Gallery, Ministries Center

# GATHERING OF GOD'S PEOPLE

## PRELUDE

Anthem for Organ and Piano  
Two Duets for Organ and Piano  
I. Spirit of God  
II. Holy, Holy, Holy

Paul Halley  
Lani Smith

Susan Ricci Rogel, piano; Edward Landin Senn, organ

## WELCOME

Rachel Pedersen

## † CALL TO WORSHIP

One: Blessed be God whose word gives hope and shapes our dreams,

**All: Whose love has conquered death and the grave.**

One: Blessed be God who orders our ways and guides our steps,

**All: Who leads us into abundant life.**

One: Let us gather our hearts for worship.

**All: Let us praise the Maker of our days.**

† **HYMN 14** For the Beauty of the Earth

DIX

## CALL TO CONFESSION

### AND PRAYER OF CONFESSION (*in unison*)

Maker of heaven and earth,

You call us into light,

but we would rather not be exposed.

You invite us to offer the best of what we have,

but we would rather take the best than give it.

You offer us hope in the midst of despair,

but we would rather dwell in self-pity.

Forgive us, O God.

Give us boldness to follow your light,

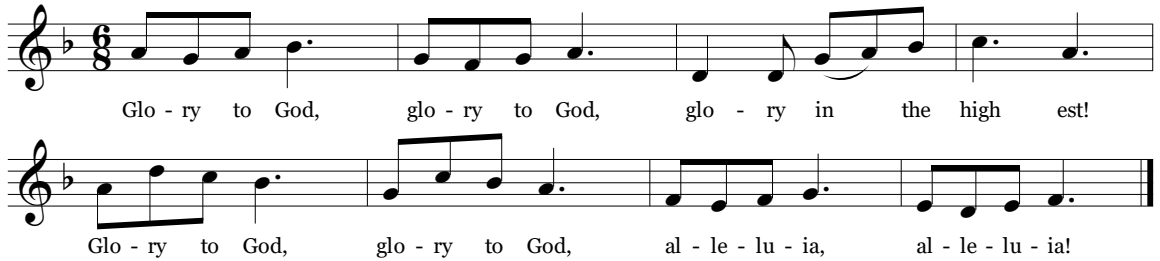
share your abundance, and claim your faithfulness,

through Christ, our faithful Lord.

*A moment of silence for personal reflection and confession.*

## ASSURANCE OF PARDON

*During the Sung Response, children are invited to come forward for the Children's Moment.*

*Sung twice.*

## PROCLAMATION OF THE WORD

### CHILDREN'S MOMENT

Rachel Pedersen

### SENDING HYMN Go Now, Children, with Our Blessing



### PRAYER FOR ILLUMINATION

Rebecca Kirkpatrick

### FIRST LESSON Psalm 105:1-11, 45b (pg. 556 in pew Bible)

### SECOND LESSON Genesis 29:15-28 (pg. 26 in pew Bible)

Franklyn C. Pottorff

One: The Word of the Lord.

All: Thanks be to God.

### SERMON

*Double or Nothing*

Franklyn C. Pottorff

† HYMN 509 All Who Hunger, Gather Gladly

HOLY MANNA

# RESPONSE TO THE WORD

## INVITATION TO DISCIPLESHIP

### OFFERTORY ANTHEM

Credo

Jane M. Marshall

I believe in the sun, even when it is not shining. I believe in love, even when not feeling it. Lord, I believe. Help thou my unbelief. I believe, Lord, I believe. I believe in God, even when He is silent.

*Please fill in the Friendship Pad at the end of your pew;  
pass it down your row and back again.*

## † DOXOLOGY 609

LASST UNS ERFREUEN

Praise God, from whom all bless - ings flow. Praise God, all crea - tures high and  
low. Al - le - lu - ia, al - le - lu - ia! Praise God, in Je - sus ful - ly  
known: Cre - a - tor, Word, and Spir - it one. Al - le - lu - ia, al - le -  
lu - ia, al - le - lu - ia, al - le - lu - ia, al - le - lu - ia!

## † PRAYER OF DEDICATION

Rebecca Kirkpatrick

## THE SACRAMENT OF THE LORD'S SUPPER

### THE INVITATION TO COMMUNION

### THE GREAT THANKSGIVING

One: The Lord be with you.

**All: And also with you.**

One: Lift up your hearts.

**All: We lift them to the Lord.**

One: Let us give thanks to the Lord our God.

**All: It is right to give our thanks and praise.**

### THE LORD'S PRAYER

Our Father who art in heaven, hallowed be thy name, thy kingdom come, thy will be done, on earth as it is in heaven. Give us this day our daily bread. And forgive us our trespasses, as we forgive those who trespass against us. And lead us not into temptation, but deliver us from evil. For thine is the kingdom, and the power, and the glory, forever. Amen.

### COMMUNION OF THE PEOPLE

*As the bread and cup are distributed, you are invited to take the bread and cup and pass it to your neighbor in the pew.*

*All bread is gluten and casein free.*

### PRAYER AFTER COMMUNION

†	<b>HYMN 687</b>	Our God, Our Help in Ages Past	ST. ANNE
†	<b>BENEDICTION AND CHORAL RESPONSE</b>		Franklyn C. Pottorff
	<b>POSTLUDE</b>	Postlude in G major	Fanny Mendelssohn Hensel

# WORSHIP NOTES

## PLAYING THE CARILLON

Rob Mygatt

### **Announcements**

**VOLUNTEER OPPORTUNITY.** We are looking for volunteers to serve at our Reception Desk on the ground floor of the Ministries Center during weekdays. This position serves as a “Minister of First Impressions,” helping to answer phones and welcome guests who visit our campus or church offices. To learn more, contact [LizEllis@bmpc.org](mailto:LizEllis@bmpc.org)

**SANCTUARY FLOWER DONATIONS.** Openings are available for Aug. 6 and 27 for donors who wish to give flowers in memory of or in honor of loved ones. Later, our Deacons deliver small arrangements of the Sanctuary flowers to homebound church members. If you would like to donate flowers for a Sunday Worship Service, contact Natalie Hoepp at [bmpcfowers@gmail.com](mailto:bmpcfowers@gmail.com)

**CONVERSE LIBRARY CARDS.** On Sunday mornings following worship, library volunteers will be in the Atrium this summer to show you how to search the Converse Library catalog online and create your own card so you may check books out with ease. Need a card but won't be here this summer? Contact [AliciaFranklin@bmpc.org](mailto:AliciaFranklin@bmpc.org)

**STORIES THROUGH ART EXHIBIT.** Today through Mon., Sept. 4, Art Gallery. An exhibition of paintings from the personal collections of the BMPC staff, supported with descriptions of how and why the pieces were acquired. The gallery is open from 10:00 a.m. to 4:00 p.m., Monday through Friday, and 9:00 a.m. to noon on Sunday.

## **Today**

**SUMMER ADULT EDUCATION: *WHAT JESUS DID*.** 8:45 a.m., Gloucester Room. BMPC member David Heaton is leading a four-week conversation based on the classic book *What Jesus Did*, by Episcopal priest Theodore Parker Ferris. The book is a reflection on the most significant acts in the ministry of Jesus of Nazareth and how they shape our faith as Christian disciples..

## **Next Sunday**

**2023 BACKPACK AND SCHOOL SUPPLY COLLECTION.** Help children served by Gemma Services start school on the right foot! Bring completed backpacks to the Narthex in the Sanctuary by Sun., Aug. 6. You may bring a “completed backpack” or help by purchasing individual supplies from our Amazon list: <https://amzn.to/3IYYOcq> or contact [MaryRichards@bmpc.org](mailto:MaryRichards@bmpc.org) for more information.

## **Next Week**

**YOUTH CAMP AT MASSANETTA SPRINGS, VA.** Sun., Aug. 6 - Fri., Aug. 11. Join us for our annual youth summer camp which is filled with fellowship, fun and faith! All rising sixth through 12th graders are invited to participate. The cost is \$650, and scholarships are available. Register online: <https://bit.ly/BMPCYouthCamp2023>  
[ShaylaJordan@bmpc.org](mailto:ShaylaJordan@bmpc.org)

# **Calendar**

## **Sunday, July 30**

7:45	a.m.	Childcare (Birth-Kindergarten), Ed. Bldg., Rm. 101
8:00	a.m.	<b>Worship with Communion, Chapel</b>
8:45	a.m.	<i>What Jesus Did</i> , Gloucester Room
10:00	a.m.	<b>Sunday Worship Communion &amp; Summer Choir, Sanctuary and Livestreamed Service on <a href="http://www.bmpc.org">www.bmpc.org</a></b>
		Worship Together Sunday for Grades 4-12, Sanctuary
10:15	a.m.	Summer Sunday School: Threes - Rising 3rd Graders, Ed. Bldg., Rm. 202
11:00	a.m.	Atrium Cafe, Atrium

## **Monday, July 31**

No Events Scheduled.

## **Tuesday, August 1**

10:30	a.m.	Tai Chi (Hybrid), Gymnasium
-------	------	-----------------------------

## **Wednesday, August 2**

No Events Scheduled.

## **Thursday, August 3**

11:00	a.m.	Artists' Gathering, Fine Arts Center
-------	------	--------------------------------------

## **Friday, August 4**

No Events Scheduled.

## **Saturday, August 5**

7:00	a.m.	Saturday Morning Men's Group, Converse House Parlor
------	------	---

## **Sunday, August 6**

8:00	a.m.	<b>Worship with Communion, Chapel</b>
10:00	a.m.	<b>Sunday Worship with Summer Choir, Sanctuary and Livestreamed Service on <a href="http://www.bmpc.org">www.bmpc.org</a></b>
		The Rev. Rebecca Kirkpatrick will preach.

## **Outreach Committee Partners**

Each year the BMPC Outreach Committee grants funding to non-profits in Greater Philadelphia. Below are the 2023 recipients along with a snapshot of what they are doing to support vulnerable communities.

### **Broad Street Ministry - [www.broadstreetministry.org](http://www.broadstreetministry.org)**

Providing radical hospitality to build communities among those in Center City Philadelphia experiencing chronic homelessness.

### **Chester Eastside - [www.ceichester.org](http://www.ceichester.org)**

Providing access to hunger safety-net programs, as well as programs for education, social services, and justice for families throughout Chester.

### **Families Forward - [www.familiesforwardphilly.org](http://www.familiesforwardphilly.org)**

Providing comprehensive support services and operating the largest emergency shelter for families experiencing homelessness in Philadelphia.

### **Habitat for Humanity - [www.habitatphiladelphia.org](http://www.habitatphiladelphia.org)**

Supporting their Critical Repair Program and New Home Construction in Philadelphia.

### **Lutheran Settlement House - Jane Addams Place - [www.lutheransettlement.org](http://www.lutheransettlement.org)**

Providing assistance in locating and obtaining independent housing, coordination of parenting education, employment, benefits, mental health services, addiction treatment, financial literacy and healthcare.

### **United Community Clinic - [www.unitedcommunityclinic.com](http://www.unitedcommunityclinic.com)**

Serving patients with no health insurance in the East Parkside Community of West Philadelphia.

### **Urban Tree Connection - [www.urbantreeconnection.org](http://www.urbantreeconnection.org)**

Building a neighborhood-rooted food and land system through community leadership development and land-based strategies in West Philadelphia.

### **Welcome Church - [www.thewelcomechurch.org](http://www.thewelcomechurch.org)**

An Evangelical Lutheran Church in America congregation that proclaims the hope and love of a gracious God to all people, especially to people experiencing homelessness.

**Artwell - [www.theArtWell.org](http://www.theArtWell.org)**

Bearing witness to the way arts can transform students in Philadelphia public schools.

**Gemma Services - [www.gemmaservices.org](http://www.gemmaservices.org)**

Providing support and specialized services for children, teens, and families experiencing emotional and behavioral concerns throughout the Philadelphia region.

**WePAC - [www.wepac.org](http://www.wepac.org)**

Reopening and staffing public school libraries throughout Philadelphia.

**Tree House Books - [www.treehousebooks.org](http://www.treehousebooks.org)**

Providing free books and literacy programs to families in Northern Philadelphia to grow and sustain a community of readers, writers, and thinkers.

**The Common Place - [www.thecommonplacephilly.org](http://www.thecommonplacephilly.org)**

Offering arts-based after-school enrichment programs, social services and community events to families in Southwest Philadelphia.

**West Kensington Ministry - [www.westkensingtonministry.com](http://www.westkensingtonministry.com)**

Providing a spiritual foundation for people experiencing poverty and violence in the West Kensington neighborhood of Philadelphia.

**Bethel Academy at Bethel AME Church in Ardmore - [www.bethelacademy.net](http://www.bethelacademy.net)**

Providing after-school academic support for students in our local community.

**Central Presbyterian Church of Norristown - [www.centralpresweb.org](http://www.centralpresweb.org)**

Serving the Latino Community through worship, outreach and home Bible studies.

**Beacon Church - [www.thewordatbeacon.org](http://www.thewordatbeacon.org)**

A neighborhood faith community located in the Kensington neighborhood of Philadelphia that strengthens its community, its children and neighbors, through faith, art and storytelling.

Support of organizations like these is possible because of your generous contributions through our annual Stewardship campaign. Thank you for your gifts.

If you wish to learn more about the work we do in mission in Greater Philadelphia, please contact [RebeccaKirkpatrick@bmppc.org](mailto:RebeccaKirkpatrick@bmppc.org)

## **Worship Staff**

**Agnes W. Norfleet**, Pastor

**Leigh DeVries**, Associate Pastor for Youth & Their Families

**Rebecca Kirkpatrick**, Associate Pastor for Adult Education & Mission

**Rachel Pedersen**, Associate Pastor for Children & Family Ministry

**Franklyn C. Pottorff**, Associate Pastor for Congregational Life & Stewardship

**Jeffrey Brillhart**, Director of Music & Fine Arts

**Edward Landin Senn**, Assistant Director of Music



## **Contact Information**

Bryn Mawr Presbyterian Church  
625 Montgomery Avenue, Bryn Mawr, PA 19010

610-525-2821 • [www.bmpc.org](http://www.bmpc.org)

[www.facebook.com/BrynMawrPres](https://www.facebook.com/BrynMawrPres)

[www.instagram.com/BrynMawrPres](https://www.instagram.com/BrynMawrPres)

[www.twitter.com/BrynMawrPres](https://www.twitter.com/BrynMawrPres)

[www.youtube.com/user/brynmawrpres](https://www.youtube.com/user/brynmawrpres)

24/7 Answering Service for Pastoral Emergencies:  
610-525-2821

The Middleton Center: 610-525-0766 •  
[info@middletoncenter.org](mailto:info@middletoncenter.org)

The Weekday School (Preschool): 610-525-2821, ext. 8840