

# *Bryn Mawr Presbyterian Church*

Sunday, August 13, 2023 | 10:00 a.m., Sanctuary

Eleventh Sunday after Pentecost



# WELCOME

## NEW HERE?

We are pleased that you are joining us as we worship God this morning. We invite you to introduce yourself to one of our pastors in the Atrium following the Worship Service. All of our programs, ministries, and opportunities for mission are open to everyone. Come join us!

## LIVESTREAMED CHURCH SERVICES

In addition to in-person worship, the Sunday Worship Services are available to watch live at 10:00 a.m. on our live-streaming page: [www.bmpc.org/livestream](http://www.bmpc.org/livestream) For your convenience, the service also will be posted on our Worship Services page on Monday.

## CHILDCARE AND SUNDAY SCHOOL

Childcare is available on Sundays from 7:45 a.m. to 12:30 p.m. for children ages six months and older. See Sunday School class information on this page. Please contact Pastor Rachel, [RachelPedersen@bmpc.org](mailto:RachelPedersen@bmpc.org) or Childcare Coordinator Erika Henry at [childcare@bmpc.org](mailto:childcare@bmpc.org) with any questions.

## WEEKLY E-NEWSLETTER

Subscribe to our BMPC eNews by visiting our website: [www.bmpc.org](http://www.bmpc.org)

## Today's Schedule

### Childcare (infant - age 5)

7:45 a.m. – 12:30 p.m.

Ed. Bldg., Rm. 101

---

### Worship with Baptism & Summer Choir

10:00 a.m., Sanctuary

---

### Worship Together Sunday Grades 4-12

10:00 a.m., Sanctuary

---

### Summer Sunday School

10:00 a.m.

Ages 3 and 4, Ed. Bldg., Rm. 106

Rising K-Grade 3 begin in  
Worship

---

### Stories Through Art Exhibit

9:00 a.m. to 12:00 p.m.

Art Gallery, Ministries Center

# GATHERING OF GOD'S PEOPLE

## PRELUDE

Gymnopedie No. 2

Erik Satie

Largo (from Symphony No. 9)

Antonin Dvořák

Vivace (from Sonata in F major)

Georg Philipp Telemann

Amanda Rogel, English horn; Susan Ricci Rogel, piano

## WELCOME

Leigh DeVries

## † CALL TO WORSHIP

One: Give thanks to the Lord,

**All: Let us call on God's name!**

One: Sing songs of praise to our Creator,

**All: Our songs tell the story of God's unending love!**

One: Give glory to God,

**All: Let our hearts rejoice as we seek the Lord.**

One: From the least to the greatest, remember all of God's works,

**All: Let us worship the One who Saves.**

## † HYMN 691

Lord, When I Came into This Life

LAND OF REST

## CALL TO CONFESSION

### AND PRAYER OF CONFESSION *(in unison)*

Merciful One, you catch us when we falter, you call to us when we are afraid, you meet us in the midst of storms, and you rescue us from danger. Still we tremble and turn away from you and from our neighbors. Convinced we are alone, we rely on shortsighted vision and miss the grace you offer. Forgive us and find us again. Reach out, for we are sinking and need your help. Amen.

*A moment of silence for personal reflection and confession.*

## ASSURANCE OF PARDON

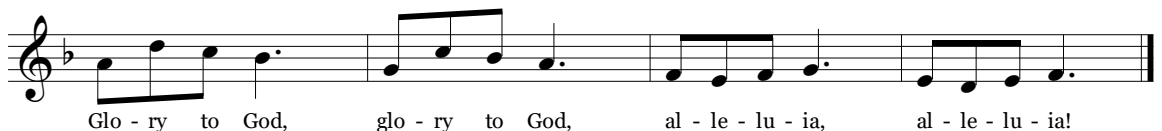
*During the Sung Response, children are invited to come forward for the Children's Moment.*

## SUNG RESPONSE 583

Glory to God

GLORIA

*Sung twice.*



† Please stand, if able.

# PROCLAMATION OF THE WORD

## CHILDREN'S MOMENT

Franklyn C. Pottorff

## THE SACRAMENT OF BAPTISM

One: Do we, as members of the church of Jesus Christ, promise to guide and nurture these children by word and deed, with love and prayer, encouraging them to know and follow Christ and to be faithful members of His church?

All: **We do.**

## BAPTISM HYMN 188

Jesus Loves Me!

JESUS LOVES ME

Jesus loves me! This I know, for the Bible tells me so. Little ones to him belong. They are weak, but he is strong. Yes, Jesus loves me! Yes, Jesus loves me! Yes, Jesus loves me! The Bible tells me so.

## PRAYER FOR ILLUMINATION

Leigh DeVries

**FIRST LESSON** Romans 10:5-15 (*pg. 160 in pew Bible*)

**SECOND LESSON** Matthew 14:22-33 (*pg. 16 in pew Bible*)

Rachel Pedersen

One: The Word of the Lord.

All: **Thanks be to God.**

## SERMON

*Sink or Swim*

Rachel Pedersen

†

**HYMN 702**

Christ Be Beside Me

BUNESSAN

# RESPONSE TO THE WORD

†

## AFFIRMATION OF FAITH

Franklyn C. Pottorff

I believe in God the Father Almighty, Maker of heaven and earth,  
and in Jesus Christ his only Son our Lord;  
who was conceived by the Holy Ghost, born of the Virgin Mary,  
suffered under Pontius Pilate, was crucified, dead, and buried;  
he descended into hell; the third day he rose again from the dead;  
he ascended into heaven,  
and sitteth on the right hand of God the Father Almighty;  
from thence he shall come to judge the quick and the dead.  
I believe in the Holy Ghost; the holy catholic church;  
the communion of saints; the forgiveness of sins;  
the resurrection of the body; and the life everlasting. Amen.

~ The Apostles' Creed

## PASTORAL PRAYER AND THE LORD'S PRAYER

Our Father who art in heaven, hallowed be thy name, thy kingdom come, thy will be done, on earth as it is in heaven. Give us this day our daily bread. And forgive us our trespasses, as we forgive those who trespass against us. And lead us not into temptation, but deliver us from evil. For thine is the kingdom, and the power, and the glory, forever. Amen.

## INVITATION TO DISCIPLESHIP

### OFFERTORY ANTHEM

Come to Me, O My Love

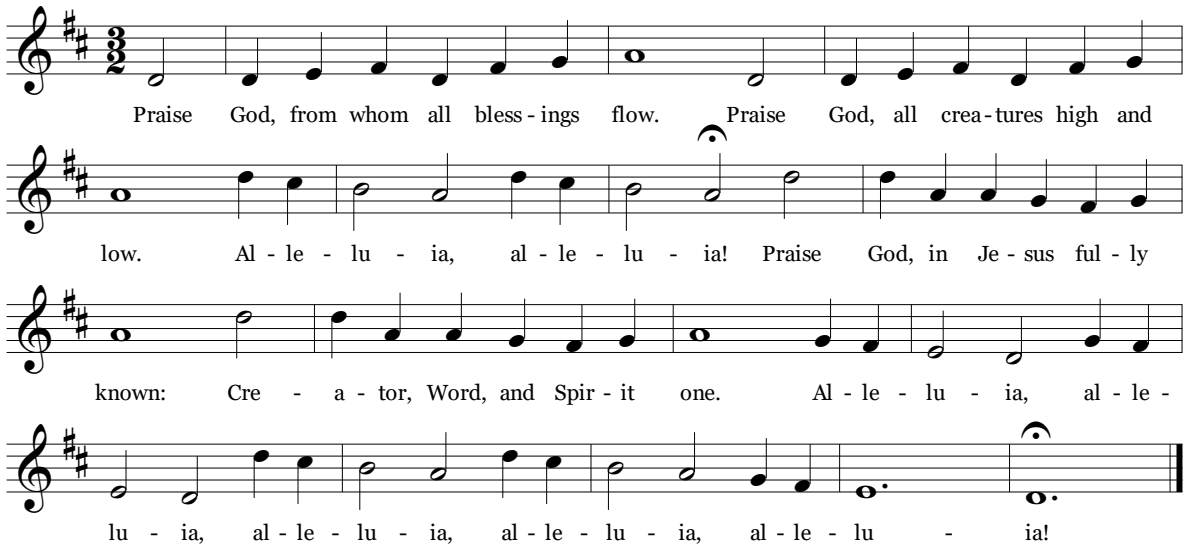
Allan Robert Petker

Listen, my love, to the song in my heart, it is calling and calling in beautiful song. Gently, so gently, it beckons you near me and circles around you and carries you home. Hear, my love, the song I sing it calls to you in lovely song. Gently now it beckons you and circles you and carries you home. Come to me, O my love. O my love, come to me.

*Please fill in the Friendship Pad at the end of your pew;  
pass it down your row and back again.*

† **DOXOLOGY 609**

LASST UNS ERFREUEN



Praise God, from whom all bless - ings flow. Praise God, all crea - tures high and  
low. Al - le - lu - ia, al - le - lu - ia! Praise God, in Je - sus ful - ly  
known: Cre - a - tor, Word, and Spir - it one. Al - le - lu - ia, al - le -  
lu - ia, al - le - lu - ia, al - le - lu - ia, al - le - lu - ia!

† **PRAYER OF DEDICATION**

Franklyn C. Pottorff

† **HYMN 721**

Lord, You Have Come to the Lakeshore PESCADOR DE HOMBRES

† **BENEDICTION AND CHORAL RESPONSE**

Rachel Pedersen

**POSTLUDE**

Praise His Greatness

Mark Hayes

## WORSHIP NOTES

### RECEIVING THE SACRAMENT OF BAPTISM

Leighton Olivia Haldy

Daughter of Kate & John Haldy

### SANCTUARY FLOWERS

Given to the glory of God and in loving memory of Bob Hauptfuhrer

### PLAYING THE CARILLON

Rob Mygatt



# **Announcements**

**PRAYER PARTNER MINISTRY.** The Prayer Partner Ministry connects members of our church through prayer. Adults pray for six to eight children or youth throughout the year, and prayer partners will have the opportunity to connect through special events and programs. You may sign up online: <https://bit.ly/PrayerPartners2023> or email [RachelPedersen@bmpe.org](mailto:RachelPedersen@bmpe.org) with questions.

**SANCTUARY FLOWER DONATIONS.** Openings are available for Sundays, Oct. 1 and 8 for donors who wish to give flowers in memory of or in honor of loved ones. Later, our Deacons deliver small arrangements of the Sanctuary flowers to homebound church members. If you would like to donate flowers for a Sunday Worship Service, contact Natalie Hoepp at [bmpeflowers@gmail.com](mailto:bmpeflowers@gmail.com)

**CHURCH OFFICER NOMINATIONS.** Please submit your recommendations by Sun., Sept. 17 for Elders, Deacons, Trustees, and Nominating Committee Members-at-Large for 2023-2024 via the nominating form: <https://bit.ly/BMPCNominationForm>. Paper copies of the nominating form are available in the Narthex and at the Reception Desk in the Ministries Center. Candidates must be members for at least two years, faithfully participate in the worship and program life of the church, and regularly contribute to the church.

## **Today**

**GUEST MUSICIANS AT 10:00 AM SERVICE.** While Jeff Brillhart continues to be on sabbatical and Edward Landin Senn takes some vacation time, we are grateful to church members and friends of the congregation as they provide musical leadership this morning, Susan Ricci Rogel, director of the Summer Choir and pianist, and Amanda Rogel, English horn.

## **This Week**

**CEASEFIRE PA TOWN HALL.** Mon., Aug. 14, 7:00 p.m., Villanova University, Driscoll Hall Atrium, 800 E. Lancaster Ave., Villanova. Join PA House Majority Leader Matthew Bradford, Rep. Lisa Borowski, CeaseFirePA Executive Director Adam Garber, and Dr. Merle Carter for a town hall about what is being done to make the Commonwealth safer. Expert panelists will answer questions about current gun safety legislation, discuss upcoming policies such as safe firearm storage, and explain how to turn these policies into laws that save lives. Register online:

<https://bit.ly/CeasefirePATownhall>

## **Upcoming**

**BLESSING OF THE BACKPACKS EVENING WORSHIP.** Sun., Aug. 27, 5:00 p.m., Sanctuary. School is just around the corner! Bring your backpack and join us for a special Backpack Blessing during the first Evening Worship service of the season.

**EDUCATION BUILDING WORKDAYS.** Wed., Aug. 30, 10:00 a.m.-noon, and Thurs., Aug. 31, 5:00-7:00 p.m. Come help get the Education Building ready for Sunday School. Projects include putting together furniture, organizing supplies, painting, and more. All skill levels welcome! [MaryRichards@bmpc.org](mailto:MaryRichards@bmpc.org)

**YOGA206 BONE BOOST CLASS.** Begins Wed., Sept. 6, 9:30 a.m., Gymnasium. This is an all-levels mat and chair yoga class focusing on bone strength with safely-adapted poses. Geared to persons proactive about strengthening their bones due to diagnosed bone loss. Participants, age 50+, must be able to safely sit on and rise from a mat. Class runs through Oct. 18. Email [YOGA206@icloud.com](mailto:YOGA206@icloud.com) for registration information.

**DANCE FOR PARKINSON'S CLASS.** Begins Tues., Sept. 12, 1:00 p.m., Gymnasium. Our Dance for Parkinson's Disease (PD) class is open to those living with PD and their care partners. This session runs through Dec. 12. For more information, contact [CarolCherry@bmpc.org](mailto:CarolCherry@bmpc.org) or visit <https://bit.ly/BMPCFitness>



# Calendar

## Sunday, August 13

7:45	a.m.	Childcare (Birth-Kindergarten), Ed. Bldg., Rm. 101
8:00	a.m.	<b>Worship with Communion, Chapel</b>
10:00	a.m.	<b>Sunday Worship with Baptism and Summer Choir, Sanctuary and Livestreamed Service on <a href="http://www.bmpc.org">www.bmpc.org</a></b>
		Worship Together Sunday for Grades 4-12, Sanctuary
10:15	a.m.	Summer Sunday School: Threes - Rising 3rd Graders, Ed. Bldg., Rm. 202
11:00	a.m.	Atrium Cafe, Atrium

## Monday, August 14

No Events Scheduled.

## Tuesday, August 15

10:30	a.m.	Tai Chi (Hybrid), Gymnasium
-------	------	-----------------------------

## Thursday, August 17

11:00	a.m.	Artists' Gathering, Fine Arts Center
-------	------	--------------------------------------

## Friday, August 18

No Events Scheduled.

## Saturday, August 19

No Events Scheduled.

## Sunday, August 20

8:00	a.m.	<b>Worship with Communion, Chapel</b>
10:00	a.m.	<b>Sunday Worship with Summer Choir, Sanctuary and Livestreamed Service on <a href="http://www.bmpc.org">www.bmpc.org</a></b>
		The Rev. Dr. Franklyn C. Pottorff will preach.

## **Hunger Committee Partners**

With a priority for supporting local feeding programs and food pantries, BMPC connects with Hunger partners around Greater Philadelphia. Key to this ministry are the monthly casserole blitzes which are a great family-friendly opportunity for hands-on service.

Support of these partners is possible because of your generous contributions to the BMPC Hunger Fund. Gifts may be made using the white Hunger Envelopes found in the pew rack or by giving online: [\*\*https://onrealm.org/bmpc/give/hunger\*\*](https://onrealm.org/bmpc/give/hunger)

**Ardmore Food Pantry** - [www.stmarysardmore.org/ardmore-food-pantry](http://www.stmarysardmore.org/ardmore-food-pantry)

**Bethel Presbyterian Church Pantry**

**\*Bethesda Project** - [www.bethesdaproject.org](http://www.bethesdaproject.org)

**Boxed Lunch & Book of Ardmore**

**\*Broad Street Ministry** - [www.broadstreetministry.org](http://www.broadstreetministry.org)

**Chester Eastside Ministries** - [www.chestereastside.org](http://www.chestereastside.org)

**Community Interfaith of Central Montgomery County**

**Eldernet** - [www.eldernetonline.org](http://www.eldernetonline.org)

**First Presbyterian Church in Glenolden** - [www.1stpresbyterianchurch.org](http://www.1stpresbyterianchurch.org)

**Lombard Central Presbyterian Church Pantry** - [www.lombardcentral.org](http://www.lombardcentral.org)

**New Horizons Senior Center** - [www.newhorizonsseniorcenter.org](http://www.newhorizonsseniorcenter.org)

**New River Presbyterian Church Pantry** - [www.newriverpc.org](http://www.newriverpc.org)

**Philly House** - [www.phillyhouse.org](http://www.phillyhouse.org)

**The Common Place** - [www.thecommonplacephilly.org](http://www.thecommonplacephilly.org)

**T.M. Thomas Presbyterian Church Pantry** - [www.tmtchurch.net](http://www.tmtchurch.net)

**\*University City Hospitality Coalition** - [www.uchcphiladelphia.org](http://www.uchcphiladelphia.org)

**Upper Merion Area Community Cupboard** - [www.umacc.org](http://www.umacc.org)

**Urban Tree Connection** - [www.urbantreeconnection.org](http://www.urbantreeconnection.org)

**\*West Kensington Ministry Pantry** - [westkensingtonministry.com](http://westkensingtonministry.com)

**West Philadelphia Seventh Day Adventist Church Pantry**

To learn more about partners with no websites, email [AliciaFranklin@bmpc.org](mailto:AliciaFranklin@bmpc.org) for contact information.

**\*Casserole recipients**



## **Worship Staff**

**Agnes W. Norfleet**, Pastor

**Leigh DeVries**, Associate Pastor for Youth & Their Families

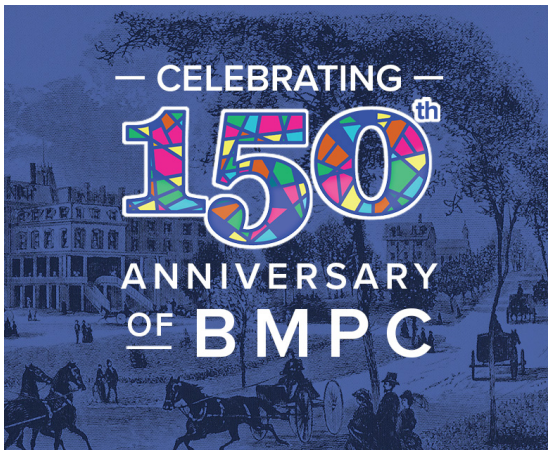
**Rebecca Kirkpatrick**, Associate Pastor for Adult Education & Mission

**Rachel Pedersen**, Associate Pastor for Children & Family Ministry

**Franklyn C. Pottorff**, Associate Pastor for Congregational Life & Stewardship

**Jeffrey Brillhart**, Director of Music & Fine Arts

**Edward Landin Senn**, Assistant Director of Music



## **Contact Information**

Bryn Mawr Presbyterian Church  
625 Montgomery Avenue, Bryn Mawr, PA 19010

610-525-2821 • [www.bmpc.org](http://www.bmpc.org)

[www.facebook.com/BrynMawrPres](https://www.facebook.com/BrynMawrPres)

[www.instagram.com/BrynMawrPres](https://www.instagram.com/BrynMawrPres)

[www.twitter.com/BrynMawrPres](https://www.twitter.com/BrynMawrPres)

[www.youtube.com/user/brynmawrpres](https://www.youtube.com/user/brynmawrpres)

24/7 Answering Service for Pastoral Emergencies:  
610-525-2821

The Middleton Center: 610-525-0766 •  
[info@middletoncenter.org](mailto:info@middletoncenter.org)

The Weekday School (Preschool): 610-525-2821, ext. 8840