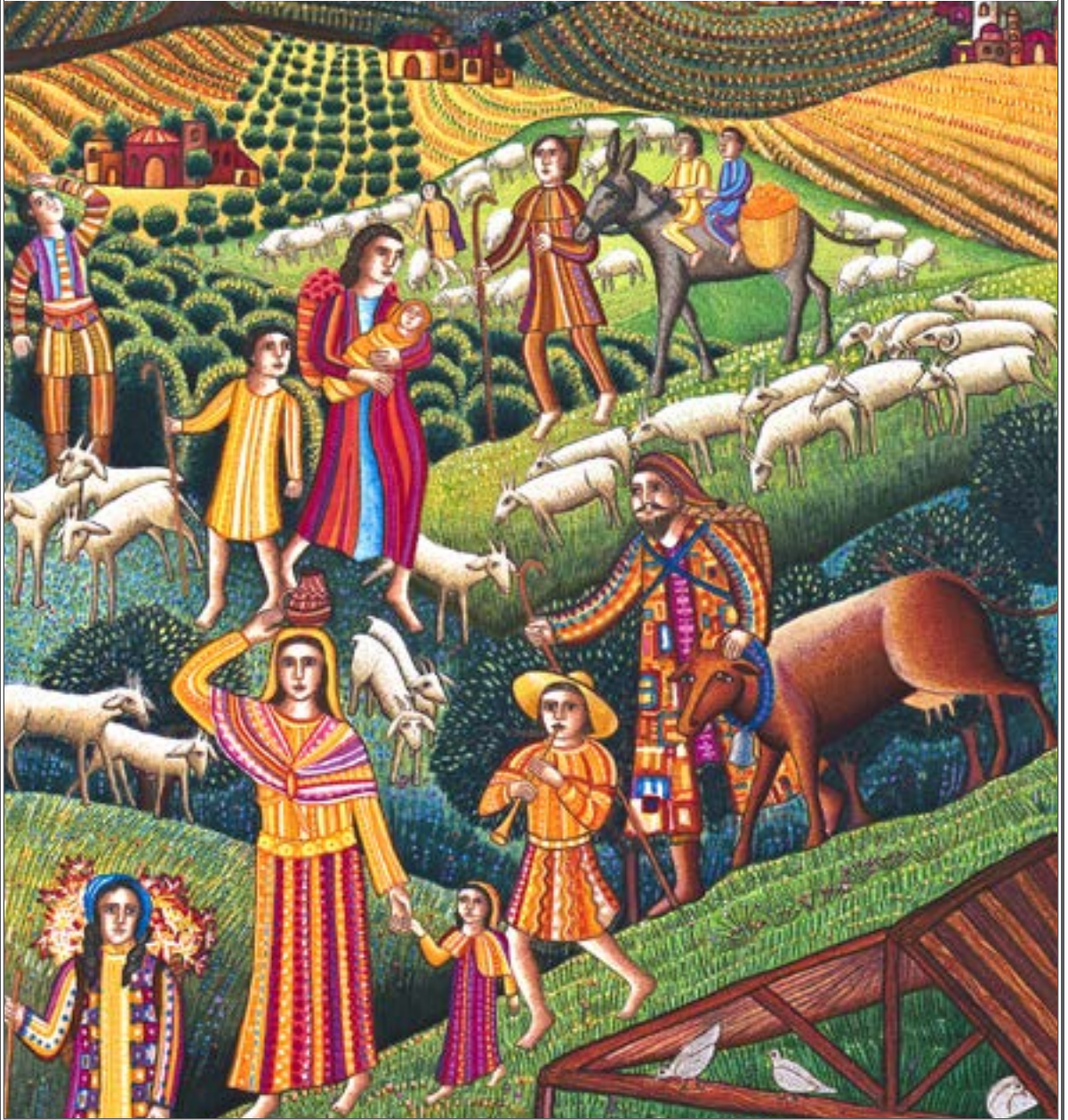


# *Bryn Mawr Presbyterian Church*

Sunday, December 3, 2023 | 10:00 a.m., Sanctuary

First Sunday of Advent



# WELCOME

## NEW HERE?

We are pleased that you are joining us as we worship God this morning. We invite you to introduce yourself to one of our pastors in the Atrium following the Worship Service. All of our programs, ministries and opportunities for mission are open to everyone. Come join us!

## LIVESTREAMED CHURCH SERVICES

In addition to in-person worship, the Sunday Worship Services are available to watch live at 10:00 a.m. on our live-streaming page: [www.bmpc.org/livestream](http://www.bmpc.org/livestream) For your convenience, the service also will be posted on our Worship Services page on Monday.

## CHILDCARE AND SUNDAY SCHOOL

Childcare is available on Sundays from 7:45 a.m. to 12:30 p.m. for children ages six months and older. See Sunday School class information on this page. Please contact Pastor Rachel, [RachelPedersen@bmpc.org](mailto:RachelPedersen@bmpc.org) or Childcare Coordinator Erika Henry at [childcare@bmpc.org](mailto:childcare@bmpc.org) with any questions.

## WEEKLY E-NEWSLETTER

Subscribe to our BMPC eNews by visiting our website: [www.bmpc.org](http://www.bmpc.org)

## Today's Schedule

### Childcare (infant - age 5)

7:45 a.m. – 12:30 p.m.

Ed. Bldg., Rm. 101

### Worship with Communion and Sanctuary Choir

10:00 a.m., Sanctuary

### Sunday School Classes

#### Age 2 - PreK

10:00 a.m., Ed. Bldg.

#### Grades K - 5

10:00 a.m., Worship in Sanctuary

10:15 a.m., Ed. Bldg.

### Youth Gathering

10:00 a.m., Sanctuary

### Atrium Café

11:00 a.m., Atrium

### BMPC Members Art Exhibit

9:00 a.m. to 12:00 p.m.,  
Art Gallery, Ministries Center

### Stories of a Young Jesus

11:15 a.m., Fullerton Room

### Live Nativity & Advent Workshop

4:00 p.m. Ed. Bldg., front Lawn

### Evening Worship

5:00 p.m., Sanctuary

# GATHERING OF GOD'S PEOPLE

PRELUDE "Kyrie eleison" from Clavierübung, Part III J. S. Bach

WELCOME Rachel Pedersen

ADVENT INTROIT O come, O come, Emmanuel VENI EMMANUEL

O come, O come, Em - man - u - el, and ran - som cap - tive Is - ra - el, that  
mourns in lone - ly ex - ile here un - til the Son of God ap - pear. Re -  
joice! Re - rejoice! Em - man - u - el shall come to thee, O Is - ra - el.

† CALL TO WORSHIP & LIGHTING OF THE ADVENT WREATH Patricia Burgess & Susan Ricci Rogel

Leader: We light this first candle as a sign of the coming light of Christ.

People: **During Advent we wait to welcome the Light of the World.**

Leader: The prophet Isaiah prepares the way saying:

People: **"O that you would tear open the heavens and come down.**

Leader: To make your presence known.

People: **You did awesome deeds we did not expect."**

Leader: May this small but abiding flame of hope

People: **Give light to the world.**

Leader: Prepare us, O God, to keep awake to the signs of your coming,

People: **Your advent here until the Son of God appear.**

† HYMN 81 Glorious Things of Thee Are Spoken AUSTRIAN HYMN

**CALL TO CONFESSION  
AND PRAYER OF CONFESSION** *(in unison)*

God who is with us, and God who is on the way,  
we confess that we do not watch for you expectantly.  
Petty jealousies, hard quarrels, ambitions rooted in selfish desires  
command our attention and distract us.  
We have ceased to hope for harmony among the nations  
or for the genuine transformation of human life for the good.  
We hear your promises of justice and peace, but dare not enact them.  
God of power and love, awaken us to hope and fit us for your coming,  
that we may watch for you with confidence and joy.

*A moment of silence for personal reflection and confession.*

**ASSURANCE OF PARDON**

*During the Sung Response, children are invited to come forward for the Children's Moment.*

**SUNG RESPONSE**

**Lift Up Your Heads**

**PUER NOBIS**

Lift up your heads, ye might - y gates; be - hold the King of glo - ry waits; the

King of kings is draw - ing near; the Sav - ior of the world is here.

**PROCLAMATION OF THE WORD**

**CHILDREN'S MOMENT**

Rachel Pedersen

**SENDING HYMN** Go Now, Children, with Our Blessing

Go now, child-ren with our bless-ing, to love and serve the Lord. May God  
Bless you. May God guard you, May the light of God shine u - pon you, and may  
God be gra-cious to you. May the pre-sence of God be with you. May the  
pre - sence of God be with you, and give you peace.

**PRAYER FOR ILLUMINATION**

Franklyn C. Pottorff

**FIRST LESSON** Isaiah 64:1-9 *(pg. 694 in pew Bible)*

**ANTHEM**

Sleepers, Wake!

J. S. Bach

Zion hears the watchman singing; Her heart with joyful hope is springing, She wakes and hurries through the night. Forth he comes, her bridegroom glorious; In strength of grace, in truth victorious: Her star is risen, her light grows bright. Now come, most worthy Lord, God's Son, Incarnate Word, Alleluia! We follow all and heed your call; To come into the banquet hall.

**SECOND LESSON** Mark 13:24-37 *(pg. 50 in pew Bible)*

Agnes W. Norfleet

One: The Word of the Lord.

All: **Thanks be to God.**

**SERMON**

*Keep Awake!*

Agnes W. Norfleet

First in series, Advent's Action Plan

† **HYMN 84**

Creator of the Stars of Night

CONDITOR ALME SIDERUM

# RESPONSE TO THE WORD

## INVITATION TO DISCIPLESHIP

Rebecca Kirkpatrick

## OFFERTORY ANTHEM Lo, How a Rose E'er Blooming Hugo Distler

Lo, how a rose e'er blooming from tender stem hath sprung! Of Jesse's lineage coming as men of old have sung. It came, a flow'ret bright, amid the cold of winter, when half-spent was the night. Isaiah 'twas foretold it, the rose I have in mind. With Mary we behold it, the Virgin Mother kind. To shew God's love aright, she bore to us a Savior, when half-spent was the night.

*Please fill in the Friendship Pad at the end of your pew; pass it down your row and back again.*

## † DOXOLOGY Praise God from Whom All Blessings Flow THE FIRST NOWELL

Praise God, from whom all bless - ings flow; praise God, all crea - tures here be - low; praise God a - bove, ye heav-en-ly host; praise Fa - ther, Son, and Ho - ly Ghost. Now - ell, Now - ell, Now - ell, Now - ell, born is the King of Is - ra - el.

## † PRAYER OF DEDICATION Franklyn C. Pottorff

## THE SACRAMENT OF THE LORD'S SUPPER

### INVITATION

### THE GREAT THANKSGIVING

One: The Lord be with you.

**All: And also with you.**

One: Lift up your hearts.

**All: We lift them to the Lord.**

One: Let us give thanks to the Lord our God.

**All: It is right to give our thanks and praise.**

## THE LORD'S PRAYER

Our Father who art in heaven, hallowed be thy name, thy kingdom come, thy will be done, on earth as it is in heaven. Give us this day our daily bread. And forgive us our trespasses, as we forgive those who trespass against us. And lead us not into temptation, but deliver us from evil. For thine is the kingdom, and the power, and the glory, forever. Amen.

## COMMUNION OF THE PEOPLE

*All bread is gluten and casein free.*

## MUSIC AT COMMUNION

Rorate Caeli

Gregorian Chant

Bryn Mawr Chant Society

Drop down, ye heavens, from above, and let the clouds rain down the Just One.

Rorate Caeli – Choral orné

Jeanne Demessieux

## PRAYER AFTER COMMUNION

† HYMN 105 People, Look East BESANÇON

† BENEDECTION AND CHORAL RESPONSE Agnes W. Norfleet

POSTLUDE "Kyrie eleison" from Clavierübung, Part III J. S. Bach

## WORSHIP NOTES

### SANCTUARY FLOWERS

Given to the glory of God and in loving memory of  
Cdr. and Mrs. George C. McFarland

### PLAYING THE CARILLON

Paul McConnell

### BULLETIN COVER

John August Swanson | Nativity

## **Christmas Eve Services**

**CHRISTMAS EVE FAMILY SERVICE.** 4:30 p.m., Sanctuary and Livestreamed. Family Service with Nativity Tableau and musical leadership by BMPC's Children's Choir, Youth Chorale and the Bryn Mawr Festival Brass. Prelude begins at 4:15 p.m. Infant and toddler childcare available without reservations from 3:45-5:45 p.m. in the Education Building, Room 101.

**CHRISTMAS EVE WORSHIP WITH COMMUNION.** 8:30 p.m., Sanctuary and Livestreamed. The Rev. Dr. Agnes W. Norfleet will preach. Prelude begins at 8:10 p.m.

## **Announcements**

**CHRISTMAS FLOWER DONATIONS.** Contributions may be given in three categories for listings in the Christmas Eve bulletin: "In memory of," "In honor of," or "In celebration of (marriage, retirement, birth, baptism)." Forms are available in the Ministries Center, in the back of the Sanctuary, or online. Monies received are used year-round for our floral decorations and Deacons' flower ministry. Deadline: Today

**ADVENT STORY PATH LABYRINTH.** Walking a labyrinth during Advent provides a meaningful way to journey to Bethlehem. The small labyrinth is open daily during Advent, Monday through Friday, 9:00 a.m. - 6:00 p.m. in the Chapel.

**CODE BLUE SHELTER VOLUNTEERS NEEDED.** For the month of January, BMPC will host a Code Blue shelter to house up to 5 men sleeping outside in Lower Merion. If you would like more details about the volunteer expectations and to sign up, please contact [RebeccaKirkpatrick@bmpc.org](mailto:RebeccaKirkpatrick@bmpc.org)

## **Today**

**CARILLON TOUR.** Today, 11:00 a.m., Choir Loft. Come see the instrument that welcomes you to worship and then leads you out after services. Meet in the Choir Loft following the postlude to climb the tower stairs and see the bells. If you have keyboard skills and would like to take lessons with one of our carillonners, or if you are interested in becoming one of our carillonners, please send an email to [MFA@bmpc.org](mailto:MFA@bmpc.org).

**STORIES OF A YOUNG JESUS: AN ADVENT BIBLE STUDY.** Today & Dec. 10, 11:15a.m., Fullerton Room, Ministries Center. There are a variety of stories surrounding the earliest years of Jesus of Nazareth's life. In this Advent season we will explore these traditions, what they teach us about the earliest understandings of who Jesus was and would become, and how they inform or challenge our faith today. The Rev. Rebecca Kirkpatrick and Dr. Joshua Yoder will teach this class together. For more information, contact [RebeccaKirkpatrick@bmpc.org](mailto:RebeccaKirkpatrick@bmpc.org)

**LIVE NATIVITY AND ADVENT WORKSHOP, AND EVENING WORSHIP.** Today, 4:00 p.m., Front Lawn. Youth and adult volunteers and actors needed! Please email [MaryRichards@bmpc.org](mailto:MaryRichards@bmpc.org) to sign up to help. Families are invited to dress for the weather and experience the Christmas Story, meeting live animals and actors while creating ornaments and simple gifts to share. Evening Worship with candlelight will begin at 5:00 p.m. in the Sanctuary.

## **This Week**

**ADVENT HARPSICHORD RECITALS.** Tuesdays, Dec. 5, 12 and 19, noon, Sanctuary. Featuring Gabriel Benton, Silvanio Reis, Edward Landin Senn, and Jeffrey Brillhart, performing free 30-minute recitals on BMPC's William Dowd harpsichord.

**QUIET PRAYER IN ADVENT.** Wed., Dec. 6, 13, 7:00 - 7:45 p.m., Witherspoon Parlor. Amidst the busyness of the Advent season, this is a time for contemplative guided prayer which will include Scripture readings, space for reflection, and a time of communal silence. Caring Ministry team members and Deacons will lead these sessions. A hybrid option will be available, please register with [KikiMcKendrick@bmpc.org](mailto:KikiMcKendrick@bmpc.org).

## **Upcoming**

**ADVENT LESSONS & CAROLS VESPERS SERVICE.** Sun., Dec. 10, 4:00 P.M., Sanctuary. Advent, a time of hope and expectations as Christians all around the world anticipate the birth of the Christ Child. Led by BMPC's Sanctuary Choir, as well as the Singing for Life and Youth Chorale ensembles, scripture readings, carols and anthems will surely draw you into the season. A free-will offering will be taken in support of Prevention Point Philadelphia – [www.ppponline.org](http://www.ppponline.org)

**RAINBOW REINDEER GAMES.** Sun., Dec. 17, 11:00 a.m., Gymnasium. All youth (grades 6-12) are invited to join in the fun, games, and color powder shenanigans we have planned for our Rainbow Reindeer Games this year! To register, visit <https://bit.ly/RRgames2023>.

**WEE CHRISTMAS.** Tues., Dec. 19, 4:00 p.m., Sanctuary. Designed for children ages 2 - 5 years and their families, this special retelling of the Christmas Story allows our youngest members to hear and participate in the story of Jesus' birth. Helpers are welcome! [MaryRichards@bmpc.org](mailto:MaryRichards@bmpc.org).

**LONGEST NIGHT SERVICE.** Wed., Dec. 20, 7:00 p.m., Sanctuary and via livestream. This contemplative worship service is for anyone yearning for comfort amid personal grief and hope for a more peaceful world. A meditation by the Rev. Dr. Kirby Lawrence Hill will be accompanied by prayer, the singing of carols and lighting candles to lead us through darkness toward healing and wholeness. A labyrinth on the Education Building Lawn invites walkers following the service, weather permitting.

## ***Caring and Sharing***

**CHRISTMAS ANGELS.** Share the spirit of Christmas by adopting a family or sponsoring a child (three to five gifts per child). Gift cards in \$25 increments. If you wish to buy a gift, you may sponsor a child's Christmas, [https://bit.ly/BMPC\\_XMAS\\_Angels\\_2023](https://bit.ly/BMPC_XMAS_Angels_2023), buy a general gift for a child, or purchase from Gemma's Amazon Wish List: <https://bit.ly/GemmaNeeds>. Gift cards and unwrapped gifts need to be delivered to the church by today. Betty Wu, [BMPCAngels@gmail.com](mailto:BMPCAngels@gmail.com)

## ***Calendar***

### **Sunday, December 3**

7:45	a.m.	Childcare (Birth-Kindergarten), Ed. Bldg., Rm. 101
8:00	a.m.	<b>Worship with Communion, Chapel</b>
8:30	a.m.	Sunday Morning Discussion Group, Cannon Room
8:45	a.m.	Art @ 9, Ed. Bldg., Rm. 102 Filling the Well, Children's Library, Ed. Bldg.
9:55	a.m.	Sunday School Ages 2s, 3s, and Pre-K, Ed. Bldg.
10:00	a.m.	<b>Worship with Communion and Sanctuary Choir, Sanctuary and Livestreamed Service on <a href="http://www.bmpc.org">www.bmpc.org</a></b> Youth Gathering, Gymnasium
10:15	a.m.	Sunday School K-5th Grade, Ed. Bldg.
11:00	a.m.	Family Fellowship, Ed. Bldg. Atrium Cafe, Atrium
11:15	a.m.	Stories of a Young Jesus, Fullerton Room

4:00	p.m.	Live Navtivity & Advent Workshop, Ed. Bldg. Front Lawn
5:00	p.m.	Evening Worship, Sanctuary

### **Monday, December 4**

6:00	p.m.	Middle School Mondays, Gymnasium
------	------	----------------------------------

### **Tuesday, December 5**

9:00	a.m.	Repose Yoga, (Hybrid), Gymnasium
10:30	a.m.	Tai Chi (Hybrid), Gymnasium
1:00	p.m.	Dance for Parkinson's Class, Gymnasium
6:45	p.m.	BMPC Tutoring Program, Ed. Bldg.
7:00	p.m.	Deacon's Meeting, Fullerton Room

### **Wednesday, December 6**

9:30	a.m.	Yoga206 Bone Boost Class, Gymnasium
10:00	a.m.	Coffee Cup Bible Study (Hybrid), Cannon Room
4:45	p.m.	Wednesdays together, Ed. Bldg
5:30	p.m.	Wednesday Night Dinner, Congregational Hall
5:45	p.m.	Youth Chorale, Fine Arts Center
7:00	p.m.	High School Student Serve, Gymnasium Quiet Prayer in Advent (Hybrid), Witherspoon Parlor Worldwide Ministries Committee Meeting, Cannon Room

### **Thursday, December 7**

9:30	a.m.	Singing for Life, Fine Arts Center
11:00	a.m.	Artist's Gathering, Fine Arts Kitchen
6:00	p.m.	Refugee Committee Meeting, Witherspoon Parlor
6:30	p.m.	Youth Ministry Council Meeting, Off Campus
7:00	p.m.	Sanctuary Choir Rehearsal, Fine Arts Center

### **Friday, December 8**

No Events Scheduled.

### **Saturday, December 9**

7:00	a.m.	Saturday Morning Men's Group, Converse House Parlor
9:00	a.m.	Advent Lessons & Carols Vespers Service Rehearsal, Sanctuary
10:00	a.m.	Searching For Still Waters Bereavement Group, Witherspoon Parlor
11:30	a.m.	Surviving the Holidays: Grief Program, Congregational Hall

## Sunday, December 10

8:00	a.m.	<b>Worship with Communion, Chapel</b>
10:00	a.m.	<b>Sunday Worship with Sanctuary Choir</b> <b>Sanctuary and Livestreamed Service on <a href="http://www.bmpc.org">www.bmpc.org</a></b> The Rev. Dr. Agnes Norfleet will preach.
4:00	p.m.	Advent Lessons & Carols Vespers Service, Sanctuary

## **Worship Staff**

**Agnes W. Norfleet**, Pastor

**Leigh DeVries**, Associate Pastor for Youth & Their Families

**Rebecca Kirkpatrick**, Associate Pastor for Adult Education & Mission

**Kirby Lawrence Hill**, Interim Associate Pastor for Pastoral Care & Senior Adults

**Rachel Pedersen**, Associate Pastor for Children & Family Ministry

**Franklyn C. Pottorff**, Associate Pastor for Congregational Life & Stewardship

**Jeffrey Brillhart**, Director of Music & Fine Arts

**Edward Landin Senn**, Assistant Director of Music



## **Contact Information**

Bryn Mawr Presbyterian Church  
625 Montgomery Avenue, Bryn Mawr, PA 19010

610-525-2821 • [www.bmpc.org](http://www.bmpc.org)

[www.facebook.com/BrynMawrPres](https://www.facebook.com/BrynMawrPres)

[www.instagram.com/BrynMawrPres](https://www.instagram.com/BrynMawrPres)

[www.twitter.com/BrynMawrPres](https://www.twitter.com/BrynMawrPres)

[www.youtube.com/user/brynmawrpres](https://www.youtube.com/user/brynmawrpres)

24/7 Answering Service for Pastoral Emergencies:  
610-525-2821

The Middleton Center: 610-525-0766 •  
[info@middletoncenter.org](mailto:info@middletoncenter.org)

The Weekday School (Preschool): 610-525-2821, ext. 8840