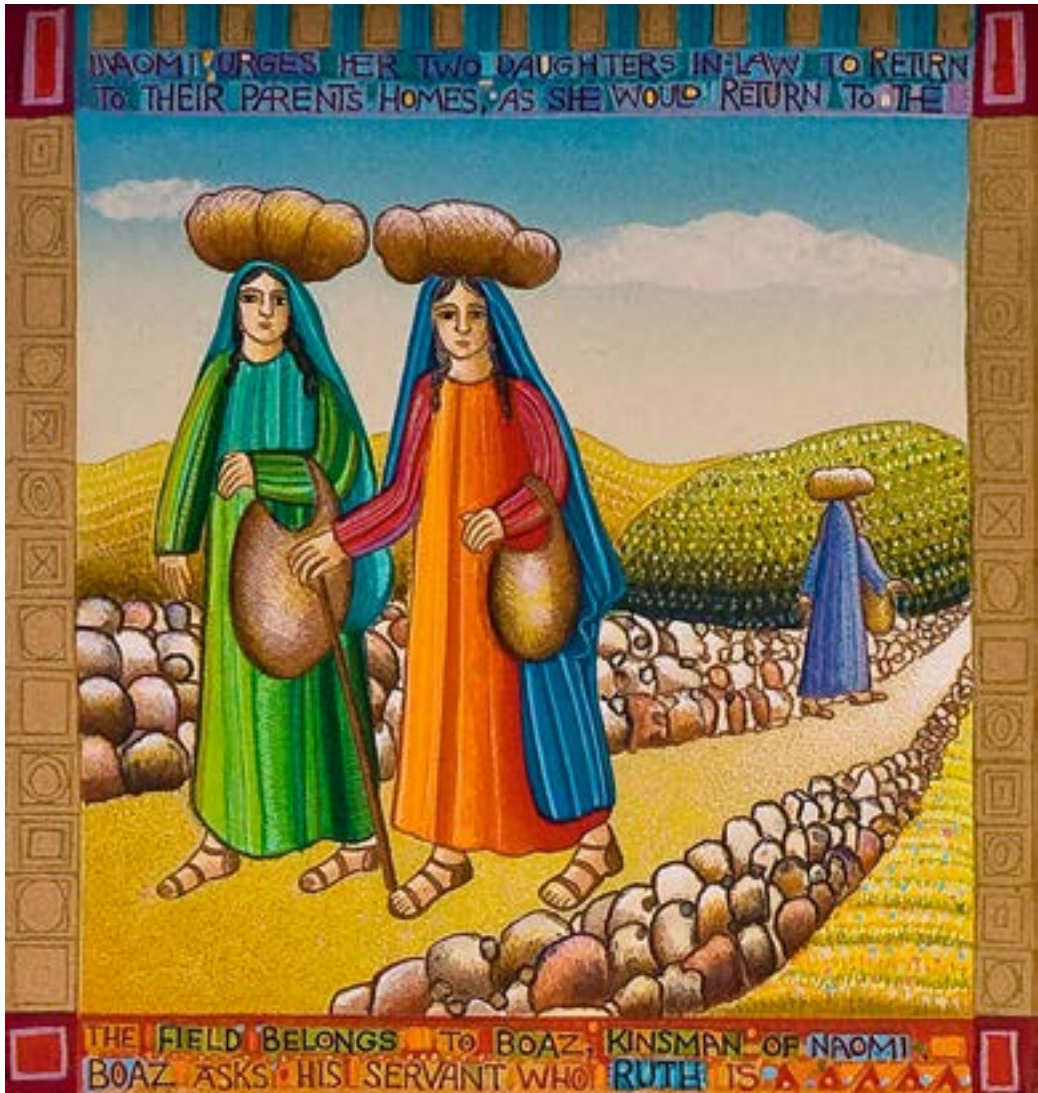


Second Sunday after Epiphany

Sunday, January 19, 2025

8:00 a.m., Chapel



Gathering of God's People

PRELUDE

WELCOME

Kirby Lawrence Hill

Please stand, if able.

CALL TO WORSHIP

One Praise the Lord, O my soul! I will praise the Lord as long as I live;

All I will sing praises to my God while I have my being.

One The Lord sets the prisoners free; the Lord opens the eyes of the blind;
the Lord lifts up those who are bowed down;

**All the Lord loves the righteous and cares for the stranger; the Lord
sustains the orphan and widow, and all those in need.**

One The Lord shall reign forever, our God throughout all generations.

HYMN 35 Praise Ye the Lord, the Almighty

LOBE DEN HERREN

CALL TO CONFESSION & PRAYER OF CONFESSION

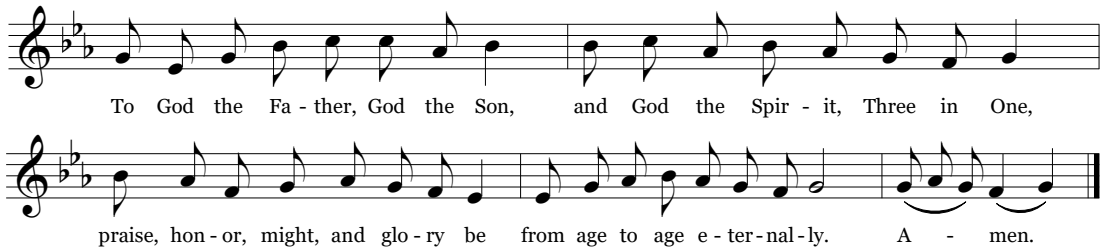
**All Almighty God, you call us to live lives marked by love and
hospitality, but we fall short of our calling. Instead of living
in harmony with one another we sow seeds of discontent.
Instead of looking for what is noble in those around us we
consider ourselves more worthy than others. Instead of
rejoicing in hope we fall victim to despair. Forgive us, O God,
and bring us back to your love for all people in every station of
life, that we may bear the fruit of the gospel.**

A moment of silence for personal reflection and confession.

ASSURANCE OF PARDON

SUNG RESPONSE

CONDITOR ALME SIDERUM



To God the Fa - ther, God the Son, and God the Spir - it, Three in One,
 praise, hon - or, might, and glo - ry be from age to age e - ter - nal - ly. A - men.

Hearing of the Word

PRAYER FOR ILLUMINATION

Meg Holdsworth

FIRST LESSON Psalm 16:5-11

(pg. 496 in pew Bible)

SECOND LESSON Ruth 1:6-22

(pg. 241 in pew Bible)

Agnes W. Norfleet

One The Word of the Lord.
 All **Thanks be to God.**

SERMON *Ruth: From Tragedy to Journey*

First in Three Part Series

Agnes W. Norfleet

Response to the Word

THE SACRAMENT OF THE LORD'S SUPPER

Kirby Lawrence Hill

You are invited to come forward, using the center aisle, to partake of the Lord's Supper by intinction (dipping a piece of bread into the cup); return to your seat using the side aisle.

Gluten- and casein-free elements are on the center table.

You are invited to bring your offering when you come forward.

THE INVITATION TO COMMUNION

THE GREAT THANKSGIVING

One The Lord be with you.

All And also with you.

One Lift up your hearts.

All We lift them to the Lord.

One Let us give thanks to the Lord our God.

All It is right to give our thanks and praise.

THE LORD'S PRAYER

Our Father who art in heaven, hallowed be thy name, thy kingdom come, thy will be done, on earth as it is in heaven. Give us this day our daily bread. And forgive us our trespasses, as we forgive those who trespass against us. And lead us not into temptation, but deliver us from evil. For thine is the kingdom, and the power, and the glory, forever. Amen.

COMMUNION OF THE PEOPLE

PRAYER OF DEDICATION

Agnes W. Norfleet

Please stand, if able.

HYMN 542 God Be With You Till We Meet Again

GOD BE WITH YOU

One The peace of Christ be with you.
All **And also with you.**

POSTLUDE

"I AM THE RESURRECTION AND THE LIFE."
Robert (Bob) Jones - January 12, 2025

Worship Notes

SANCTUARY FLOWERS

Given to the Glory of God and in loving memory of Eugene K. Wolf and Maria K. Wolf.

ASSISTING WITH COMMUNION

Meg Holdsworth, Elder

USHER

Tom Hays

BULLETIN COVER

Story of Ruth © 2025 John August Swanson | Eyekons

WELCOME TO BRYN MAWR PRESBYTERIAN CHURCH

Welcome to Bryn Mawr Presbyterian Church! Whether you're visiting for the first time or have been part of our community for years, we're so glad you're here. We hope this hour of worship brings you meaning and inspiration. Inside this bulletin, you'll find announcements about upcoming opportunities to grow as disciples of Jesus Christ. We pray that your time with us leads to deeper connections and meaningful ways to live out your faith through worship, fellowship, and service.



The Rev. Dr. Agnes W. Norfleet
Senior Pastor

NEW HERE?

We are pleased that you are joining us as we worship God this morning. We invite you to introduce yourself to one of our pastors in the Atrium following the worship service. All of our programs, ministries, and opportunities for mission are open to everyone. Learn more at bmpc.org.

LIVESTREAMED CHURCH SERVICES

Our Sunday 10:00 a.m. service is livestreamed and can be viewed at www.bmpc.org/livestream or on our YouTube channel. A recording of the service will also be available on our Worship Services website page and Vimeo channel starting Monday. If you are attending in person and prefer not to be on camera, please speak with an usher who will seat you in an area off camera.

CHILDCARE ON SUNDAY

Childcare is available on Sundays from 7:45 a.m. to 12:30 p.m. for children ages six months and older. Please contact the Rev. Rachel Pedersen, RachelPedersen@bmpc.org or Childcare Coordinator Erika Henry, childcare@bmpc.org with any questions.

Announcements

TODAY

Belonging and Inclusion, A Conversation. Sun., Jan. 19, 11:15 a.m., Congregational Hall. In the Spring of 2024, the BMPC Session approved a new “Commitment to Belonging and Inclusion” to help guide our church’s leaders, councils, and committees as we move more fully into a welcoming and diverse congregation. Join the Anti-Racism Committee (ARC) in large and small group conversations about the statement, how it is being implemented, and how it connects to all parts of our life together.

Feminine Energy Exhibit. Through Mar. 2, Gallery. This exhibit by Sister Helen David Brancato honors the courage and strength of women from diverse backgrounds and eras who lived with passion and compassion. Through these portraits, we celebrate their fidelity, endurance, and the many ways they shared their talents and gifts with the world.

NEW ANNOUNCEMENTS

California Wildfire Relief. You can support wildfire relief efforts by making a financial contribution to Presbyterian Disaster Assistance (PDA). Simply write “Wildfire Relief” in the memo line of your check.

Donations can be made through today’s offering or sent to the church office during the week. To learn more about PDA’s vital work in supporting churches and residents affected by the fires, visit bit.ly/PresbyterianDisasterAssistance

Urban Suburban Book Group. Tues., Jan. 21, 7:00 p.m., Zoom. The Urban Suburban book group will discuss the book *Go As a River*, which is partially based on the actual events surrounding the town of Iola, Colorado, which was intentionally sacrificed to make way for a giant reservoir on the Gunnison River. It is a lyrical tour de force from start to finish. Contact JenniferMcarthur@bmpc.org

Deepen Your Faith This Lent. Looking for a meaningful way to connect with others in the church and grow in faith this Lent? Join a Lenten Connection Group! These four one-hour weekly gatherings are lay-led groups that will reflect on scripture and insights from our annual Lenten devotional, written by our pastors and fellow congregants. Share joys and concerns, listen deeply, and support one another on this sacred journey. To join a group, fill out the form at bit.ly/LentenCG or contact RebeccaKirkpatrick@bmpc.org

UPCOMING

Oil Painting for Beginners. Starting Fri., Jan. 24, 11:00 a.m. - 1:30 p.m., Fine Arts Kitchen. Learn the fundamentals of oil painting in this beginner-friendly art class. Begin with observational skills and still life drawing, transfer to canvas, master tonal underpainting, tools, and palette setup, and advance to full-color painting with refined color mixing and matching. Sign up today and transform your art! Class registration is \$100 and is limited to 12 participants. Register at bit.ly/OilPaintingBMPC

The Jazz Sanctuary Concert. Wed., Jan. 29, 7:00 p.m., Congregational Hall. All are invited to join us for a free concert by The Jazz Sanctuary, a musical group bringing live jazz to diverse venues, blending artistry with a mission to foster community and enrichment. The concert will include coffee and dessert and follows BMPC's weekly Wednesday Night Dinner (\$12/person). This event is sponsored by ARC, BMPC's Anti-Racism Committee.

Singing for Life. Starting Thurs., Jan 30, 9:30-10:45 a.m., Fine Arts Center. Join us for the Spring 2025 semester of Singing for Life, a weekly program of singing and physical/vocal exercises for those aged 55 and older. Membership does not require BMPC affiliation. Cost for the semester

is \$75. Sign up at bit.ly/S4LSpring2025
Contact ToriFisher@bmpc.org

Souper Bowl of Caring Food Collection. Sun., Feb. 9, Narthex. This year, BMPC donations will be distributed among six of our local partners located from Lower Merion to Chester, serving their community's needs. Donations should be brought to the Narthex on Feb. 9 before worship. Suggested donations include cold cereals, pasta and sauce, soups, peanut butter, jelly, canned vegetables, beans or fruit, and mac & cheese. To promote sustainability and at the request of our partner pantries, we encourage you to bring your donations in reusable grocery bags. Contact JenniferMcArthur@bmpc.org

Youth Summer Mission Trip. July 6-11, 2025. Current 5th-12th graders are invited to the Youth Summer Mission Trip at CROSS Missions in Charlotte, NC. Cost for first registrant is \$250. Each additional registrant (sibling or friend) is \$125. Scholarships are available. Register by Fri., Mar. 14 at bit.ly/BMPCMissionTripNC Contact AndyGreenhow@bmpc.org

Youth Summer Camp. July 26-Aug. 2, 2025. Current 6th-12th graders will travel to Montreat Conference Center in Montreat, NC for camp. Youth will learn about Jesus, connect with new and old friends

from across the country, and play games. Registration cost is \$650. Scholarships are available. Register by Fri., Mar. 14 at bit.ly/BMPCYouthCamp2025 Contact [Andy Greenhow@bmpc.org](mailto:AndyGreenhow@bmpc.org)

CARING AND SHARING

Sanctuary Flower Donations. Openings are available in February and March for donors who wish to give flowers in memory of or in honor of loved ones. After Sunday services, our Deacons deliver small arrangements of the flowers to homebound church members. Contact SusanThorkelson@mac.com

Code Blue Volunteers Needed. For the month of January, BMPC is hosting a Code Blue Shelter to house up to five men sleeping outside in Lower Merion on the coldest nights. Volunteers work in shifts between 8:30p.m. and 6:30 a.m. on nights the shelter is open. Visit bit.ly/CodeBlue-Volunteer to sign up. Contact Jennifer-McArthur@bmpc.org

Calendar

SUNDAY, JANUARY 19

- 7:45 a.m. Childcare (Birth-Kindergarten), Ed. Bldg., Rm. 101
- 8:00 a.m. **Worship with Communion, Chapel**
- 8:30 a.m. Sunday Morning Discussion Group, Cannon Room
- 8:45 a.m. Art@9, Room 102, Ed. Bldg.
- 8:45 a.m. Filling the Well, Children's Library, Ed. Bldg.
- 9:00 a.m. Feminine Energy Exhibit, Gallery
- 9:55 a.m. Sunday School Ages 2s, 3s, and Pre-K, Ed. Bldg.
- 10:00 a.m. **Worship with Sanctuary Choir, Sanctuary and Livestreamed**
- 10:00 a.m. Youth in Worship, Sanctuary
- 10:15 a.m. Sunday School Kindergarten, Ed. Bldg.
- 10:15 a.m. Sunday School 1-5th Grade, Gymnasium
- 11:00 a.m. Family Fellowship, Ed. Bldg. Hall
- 11:00 a.m. Atrium Cafe, Atrium
- 11:15 a.m. Belonging and Inclusion, A Conversation, Congregational Hall

MONDAY, JANUARY 20

Campus closed for Martin Luther King Jr. Day

TUESDAY, JANUARY 21

- 8:30 a.m. APNC for Congregational Care Meeting, Gloucester Room
- 9:00 a.m. RePose Yoga (Hybrid), Gymnasium
- 10:30 a.m. Tai Chi (Hybrid), Gymnasium
- 1:00 p.m. Dance for Parkinson's Disease Class, Gymnasium
- 6:45 p.m. BMPC Tutoring Program, Ed. Bldg. Hall
- 7:00 p.m. Hunger Committee Meeting, Cannon Room

Calendar

WEDNESDAY, JANUARY 22

- 9:30 a.m. Yoga206 Bone Boost, Gymnasium
- 10:00 a.m. Coffee Cup Bible Study, Cannon Room
- 10:00 a.m. Wednesday Men's Group, Converse House Parlor
- 4:30 p.m. Wednesday Connection Group, Converse House Parlor
- 4:45 p.m. Beginners' Choir Rehearsal, Ed. Bldg. Hall
- 4:45 p.m. Children's Choir Rehearsal, Children & Youth Rehearsal Room
- 5:30 p.m. Wednesday Night Dinner, Congregational Hall
- 5:45 p.m. Youth Chorale Rehearsal, Children & Youth Rehearsal Room
- 7:00 p.m. Outreach Committee Meeting, Cannon Room
- 7:00 p.m. Student Serve, Gym Youth Lounge

THURSDAY, JANUARY 23

- 9:45 a.m. FIT4MOM, Gymnasium
- 7:00 p.m. Sanctuary Choir Rehearsal, Rehearsal Room

FRIDAY, JANUARY 24

- 8:30 a.m. Foundation Investment Committee, virtual
- 9:45 a.m. FIT4MOM, Gymnasium
- 11:00 a.m. Oil Painting for Beginners, Fine Arts Center

SATURDAY, JANUARY 25

- 7:00 a.m. Saturday Morning Men's Connection Group, Converse House Parlor
- 10:00 a.m. Searching for Still Waters Bereavement Group, Converse House Parlor

SUNDAY, JANUARY 26

- 8:00 a.m. **Worship with Communion, Chapel**
- 10:00 a.m. **Worship with Sanctuary Choir, Sanctuary and Livestreamed**
The Rev. Dr. Agnes W. Norfleet will preach.
- 11:00 a.m. Congregational Meeting, Sanctuary

Giving

Your generosity can make a profound difference at Bryn Mawr Presbyterian Church. Join us in spreading love and hope by giving at bit.ly/BMPCGiveOnline or simply scan the QR code to the right. Every donation, no matter the size, fuels our mission to create a more faithful, just, and compassionate community. Together, let's make a lasting impact!



CONNECT WITH US



BrynMawrPres



BrynMawrPres



user/brynmawrpres

Worship Staff

Agnes W. Norfleet, Pastor

Andy Greenhow, Interim Associate Pastor for Youth & Their Families

Rebecca Kirkpatrick, Associate Pastor for Adult Education & Mission

Kirby Lawrence Hill, Interim Associate Pastor for Pastoral Care & Senior Adults

Rachel Pedersen, Associate Pastor for Children & Family Ministry

Jeffrey Brillhart, Director of Music & Fine Arts

Edward Landin Senn, Assistant Director of Music